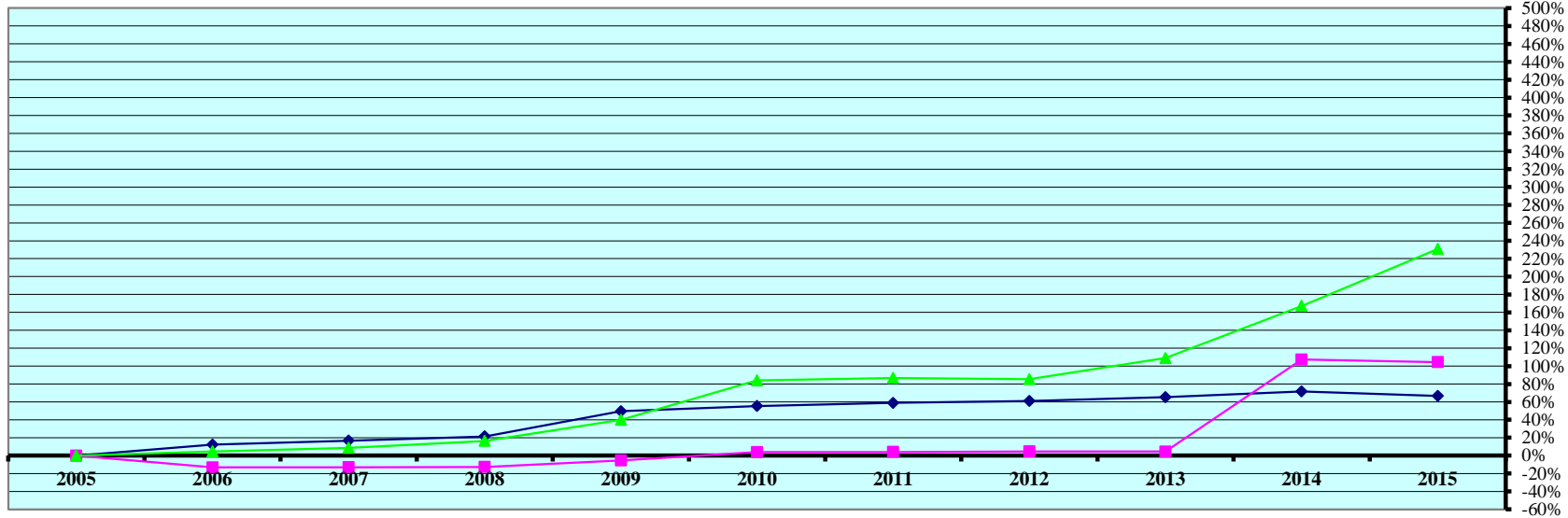


REAL PROPERTY VALUATIONS - Cumulative %Change 2005-2015



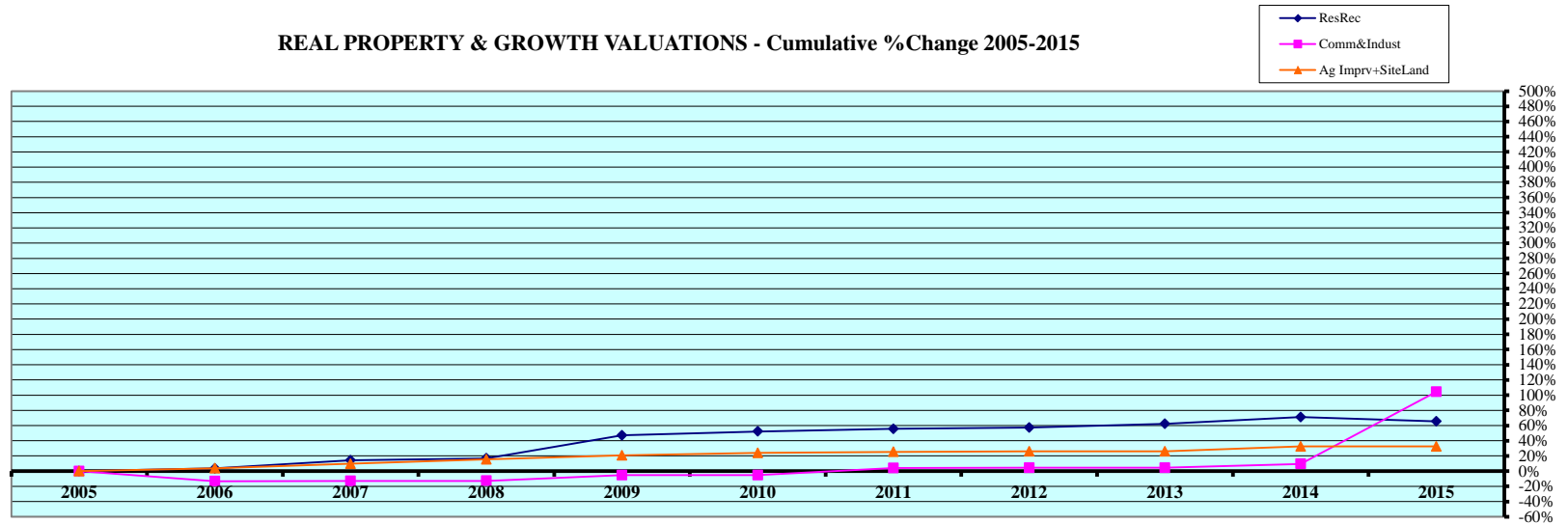
Tax Year	Residential & Recreational ⁽¹⁾				Commercial & Industrial ⁽¹⁾				Total Agricultural Land ⁽¹⁾			
	Value	Amnt Value Chg	Ann.%chg	Cmltv%chg	Value	Amnt Value Chg	Ann.%chg	Cmltv%chg	Value	Amnt Value Chg	Ann.%chg	Cmltv%chg
2005	7,860,439	--	--	--	1,786,201	--	--	--	73,414,962	--	--	--
2006	8,823,476	963,037	12.25%	12.25%	1,550,126	-236,075	-13.22%	-13.22%	76,764,580	3,349,618	4.56%	4.56%
2007	9,178,253	354,777	4.02%	16.77%	1,555,244	5,118	0.33%	-12.93%	79,840,020	3,075,440	4.01%	8.75%
2008	9,544,888	366,635	3.99%	21.43%	1,558,942	3,698	0.24%	-12.72%	85,480,795	5,640,775	7.07%	16.44%
2009	11,761,277	2,216,389	23.22%	49.63%	1,689,783	130,841	8.39%	-5.40%	102,799,124	17,318,329	20.26%	40.02%
2010	12,216,144	454,867	3.87%	55.41%	1,854,763	164,980	9.76%	3.84%	135,177,802	32,378,678	31.50%	84.13%
2011	12,486,998	270,854	2.22%	58.86%	1,859,019	4,256	0.23%	4.08%	137,138,972	1,961,170	1.45%	86.80%
2012	12,648,149	161,151	1.29%	60.91%	1,868,258	9,239	0.50%	4.59%	136,111,173	-1,027,799	-0.75%	85.40%
2013	12,985,303	337,154	2.67%	65.20%	1,865,795	-2,463	-0.13%	4.46%	153,373,829	17,262,656	12.68%	108.91%
2014	13,499,708	514,405	3.96%	71.74%	3,701,585	1,835,790	98.39%	107.23%	196,172,358	42,798,529	27.90%	167.21%
2015	13,103,383	-396,325	-2.94%	66.70%	3,651,447	-50,138	-1.35%	104.43%	242,985,551	46,813,193	23.86%	230.98%

Rate Annual %chg: Residential & Recreational 5.24% Commercial & Industrial 7.41% Agricultural Land 12.71%

Cnty# 57
 County LOGAN

(1) Residential & Recreational excludes Agric. dwelling & farm home site land. Commercial & Industrial excludes minerals. Agricultural land includes irrigated, dry, grass, waste, & other agland, excludes farm site land.

REAL PROPERTY & GROWTH VALUATIONS - Cumulative %Change 2005-2015



Tax Year	Residential & Recreational ⁽¹⁾						Commercial & Industrial ⁽¹⁾						
	Value	Growth Value	% growth of value	Value Exclud. Growth	Ann.%chg w/o grwth	Cmltv%chg w/o grwth	Value	Growth Value	% growth of value	Value Exclud. Growth	Ann.%chg w/o grwth	Cmltv%chg w/o grwth	
2005	7,860,439	140,671	1.79%	7,719,768	--	--	1,786,201	9,689	0.54%	1,776,512	--	--	
2006	8,823,476	675,830	7.66%	8,147,646	3.65%	3.65%	1,550,126	0	0.00%	1,550,126	-13.22%	-13.22%	
2007	9,178,253	201,038	2.19%	8,977,215	1.74%	14.21%	1,555,244	0	0.00%	1,555,244	0.33%	-12.93%	
2008	9,544,888	359,228	3.76%	9,185,660	0.08%	16.86%	1,558,942	0	0.00%	1,558,942	0.24%	-12.72%	
2009	11,761,277	188,424	1.60%	11,572,853	21.25%	47.23%	1,689,783	0	0.00%	1,689,783	8.39%	-5.40%	
2010	12,216,144	250,557	2.05%	11,965,587	1.74%	52.23%	1,854,763	160,367	8.65%	1,694,396	0.27%	-5.14%	
2011	12,486,998	253,582	2.03%	12,233,416	0.14%	55.63%	1,859,019	0	0.00%	1,859,019	0.23%	4.08%	
2012	12,648,149	281,900	2.23%	12,366,249	-0.97%	57.32%	1,868,258	4,381	0.23%	1,863,877	0.26%	4.35%	
2013	12,985,303	234,970	1.81%	12,750,333	0.81%	62.21%	1,865,795	0	0.00%	1,865,795	-0.13%	4.46%	
2014	13,499,708	44,800	0.33%	13,454,908	3.62%	71.17%	3,701,585	1,743,718	47.11%	1,957,867	4.93%	9.61%	
2015	13,103,383	94,372	0.72%	13,009,011	-3.63%	65.50%	3,651,447	0	0.00%	3,651,447	-1.35%	104.43%	
Rate Ann%chg	5.24%			Resid & Rec. w/o growth			7.41%			C & I w/o growth			0.00%

Tax Year	Ag Improvements & Site Land ⁽¹⁾				Ann.%chg w/o grwth	Cmltv%chg w/o grwth		
	Agric. Dwelling & Homesite Value	Agoutbldg & Farmsite Value	Ag Imprv&Site Total Value	Growth Value				
2005	7,958,641	3,215,366	11,174,007	84,905	0.76%	11,089,102		
2006	9,601,081	2,402,855	12,003,936	399,721	3.33%	11,604,215	3.85%	3.85%
2007	10,549,677	2,459,974	13,009,651	743,018	5.71%	12,266,633	2.19%	9.78%
2008	10,476,852	2,481,275	12,958,127	48,687	0.38%	12,909,440	-0.77%	15.53%
2009	11,401,836	2,625,826	14,027,662	530,376	3.78%	13,497,286	4.16%	20.79%
2010	11,325,197	2,694,205	14,019,402	151,143	1.08%	13,868,259	-1.14%	24.11%
2011	11,224,377	2,832,975	14,057,352	45,619	0.32%	14,011,733	-0.05%	25.40%
2012	11,219,511	3,000,013	14,219,524	144,467	1.02%	14,075,057	0.13%	25.96%
2013	11,173,766	3,164,244	14,338,010	251,197	1.75%	14,086,813	-0.93%	26.07%
2014	11,636,428	3,160,710	14,797,138	0	0.00%	14,797,138	3.20%	32.42%
2015	11,552,714	3,690,697	15,243,411	449,108	2.95%	14,794,303	-0.02%	32.40%
Rate Ann%chg	3.80%	1.39%	3.15%	Ag Imprv+Site w/o growth		1.06%		

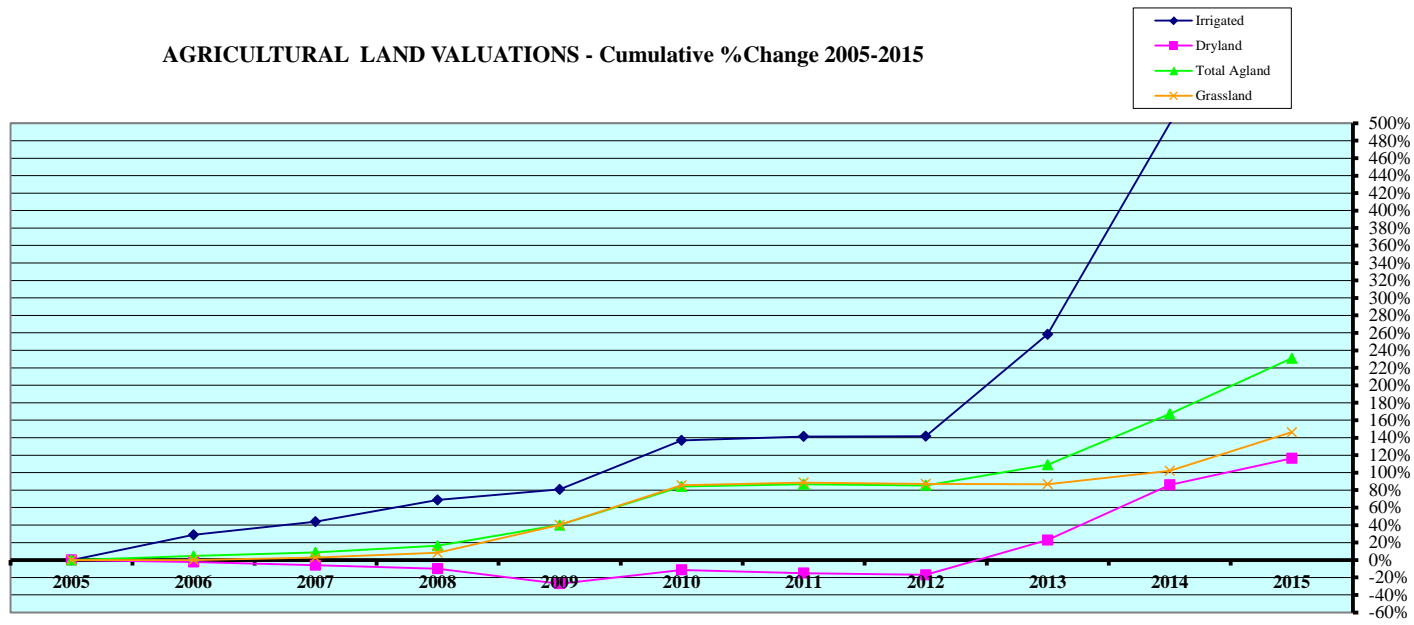
(1) Residential & Recreational excludes AgDwelling & farm home site land; Comm. & Indust. excludes minerals; Agric. land includes irrigated, dry, grass, waste & other agland, excludes farm site land. Real property growth is value attributable to new construction, additions to existing buildings, and any improvements to real property which increase the value of such property.

Sources:
 Value; 2005 - 2015 CTL
 Growth Value; 2005-2015 Abstract of Asmnt Rpt.
 NE Dept. of Revenue, Property Assessment Division
 Prepared as of 03/01/2016

Cnty# 57
 County LOGAN

CHART 2

AGRICULTURAL LAND VALUATIONS - Cumulative % Change 2005-2015



Tax Year	Irrigated Land				Dryland				Grassland			
	Value	Value Chg	Ann%chg	Cmltv%chg	Value	Value Chg	Ann%chg	Cmltv%chg	Value	Value Chg	Ann%chg	Cmltv%chg
2005	12,328,856	--	--	--	7,637,926	--	--	--	53,436,271	--	--	--
2006	15,889,445	3,560,589	28.88%	28.88%	7,455,024	-182,902	-2.39%	-2.39%	53,408,202	-28,069	-0.05%	-0.05%
2007	17,749,352	1,859,907	11.71%	43.97%	7,171,529	-283,495	-3.80%	-6.11%	54,907,230	1,499,028	2.81%	2.75%
2008	20,790,143	3,040,791	17.13%	68.63%	6,872,790	-298,739	-4.17%	-10.02%	57,806,303	2,899,073	5.28%	8.18%
2009	22,279,091	1,488,948	7.16%	80.71%	5,568,980	-1,303,810	-18.97%	-27.09%	74,916,952	17,110,649	29.60%	40.20%
2010	29,207,484	6,928,393	31.10%	136.90%	6,772,502	1,203,522	21.61%	-11.33%	99,163,640	24,246,688	32.36%	85.57%
2011	29,770,163	562,679	1.93%	141.47%	6,494,171	-278,331	-4.11%	-14.97%	100,840,462	1,676,822	1.69%	88.71%
2012	29,811,201	41,038	0.14%	141.80%	6,338,738	-155,433	-2.39%	-17.01%	99,929,208	-911,254	-0.90%	87.01%
2013	44,187,428	14,376,227	48.22%	258.41%	9,379,697	3,040,959	47.97%	22.80%	99,774,960	-154,248	-0.15%	86.72%
2014	73,978,165	29,790,737	67.42%	500.04%	14,200,866	4,821,169	51.40%	85.93%	107,961,583	8,186,623	8.21%	102.04%
2015	94,809,628	20,831,463	28.16%	669.01%	16,531,173	2,330,307	16.41%	116.44%	131,612,799	23,651,216	21.91%	146.30%

Rate Ann.%chg: Irrigated **22.63%** Dryland **8.03%** Grassland **9.43%**

Tax Year	Waste Land ⁽¹⁾				Other Agland ⁽¹⁾				Total Agricultural			
	Value	Value Chg	Ann%chg	Cmltv%chg	Value	Value Chg	Ann%chg	Cmltv%chg	Value	Value Chg	Ann%chg	Cmltv%chg
2005	11,666	--	--	--	243	--	--	--	73,414,962	--	--	--
2006	11,666	0	0.00%	0.00%	243	0	0.00%	0.00%	76,764,580	3,349,618	4.56%	4.56%
2007	11,666	0	0.00%	0.00%	243	0	0.00%	0.00%	79,840,020	3,075,440	4.01%	8.75%
2008	11,316	-350	-3.00%	-3.00%	243	0	0.00%	0.00%	85,480,795	5,640,775	7.07%	16.44%
2009	33,858	22,542	199.20%	190.23%	243	0	0.00%	0.00%	102,799,124	17,318,329	20.26%	40.02%
2010	33,933	75	0.22%	190.87%	243	0	0.00%	0.00%	135,177,802	32,378,678	31.50%	84.13%
2011	33,933	0	0.00%	190.87%	243	0	0.00%	0.00%	137,138,972	1,961,170	1.45%	86.80%
2012	31,838	-2,095	-6.17%	172.91%	188	-55	-22.63%	-22.63%	136,111,173	-1,027,799	-0.75%	85.40%
2013	31,556	-282	-0.89%	170.50%	188	0	0.00%	-22.63%	153,373,829	17,262,656	12.68%	108.91%
2014	31,556	0	0.00%	170.50%	188	0	0.00%	-22.63%	196,172,358	42,798,529	27.90%	167.21%
2015	31,763	207	0.66%	172.27%	188	0	0.00%	-22.63%	242,985,551	46,813,193	23.86%	230.98%

Cnty# **57**
County **LOGAN**

Rate Ann.%chg: Total Agric Land **12.71%**

AGRICULTURAL LAND - AVERAGE VALUE PER ACRE - Cumulative % Change 2005-2015 (from County Abstract Reports)⁽¹⁾

Tax Year	IRRIGATED LAND					DRYLAND					GRASSLAND				
	Value	Acres	Avg Value per Acre	Ann%chg AvgVal/acre	Cmltv%chg AvgVal/Acre	Value	Acres	Avg Value per Acre	Ann%chg AvgVal/acre	Cmltv%chg AvgVal/Acre	Value	Acres	Avg Value per Acre	Ann%chg AvgVal/acre	Cmltv%chg AvgVal/Acre
2005	12,339,144	21,522	573			7,636,271	20,798	367			53,431,469	320,725	167		
2006	16,361,455	22,513	727	26.76%	26.76%	7,267,447	19,930	365	-0.68%	-0.68%	53,402,867	320,593	167	-0.01%	-0.01%
2007	17,749,352	22,722	781	7.48%	36.24%	7,171,529	20,039	358	-1.86%	-2.53%	54,907,570	320,273	171	2.92%	2.91%
2008	20,470,615	24,161	847	8.46%	47.77%	7,003,865	19,646	357	-0.38%	-2.90%	57,820,463	319,292	181	5.63%	8.70%
2009	22,279,091	25,765	865	2.06%	50.82%	5,568,980	18,454	302	-15.35%	-17.81%	74,917,704	318,799	235	29.77%	41.06%
2010	29,207,484	26,154	1,117	29.15%	94.78%	7,133,762	18,092	394	30.66%	7.40%	98,810,714	318,744	310	31.91%	86.08%
2011	29,767,963	26,660	1,117	-0.02%	94.75%	6,639,416	16,593	400	1.48%	8.98%	100,717,526	319,738	315	1.61%	89.08%
2012	29,811,201	26,706	1,116	-0.03%	94.70%	6,338,312	15,732	403	0.69%	9.73%	99,923,909	317,218	315	0.00%	89.08%
2013	44,167,210	28,344	1,558	39.59%	171.79%	9,438,680	14,680	643	59.59%	75.12%	99,746,072	316,654	315	0.00%	89.08%
2014	73,828,292	29,907	2,469	58.42%	330.56%	15,580,715	13,370	1,165	81.25%	217.40%	107,565,707	316,370	340	7.94%	104.09%
2015	94,809,627	31,108	3,048	23.46%	431.57%	16,531,126	11,471	1,441	23.66%	292.51%	131,613,219	317,043	415	22.10%	149.18%

Rate Annual %chg Average Value/Acre: 18.18%

14.65%

9.56%

Tax Year	WASTE LAND ⁽²⁾					OTHER AGLAND ⁽²⁾					TOTAL AGRICULTURAL LAND ⁽¹⁾				
	Value	Acres	Avg Value per Acre	Ann%chg AvgVal/acre	Cmltv%chg AvgVal/Acre	Value	Acres	Avg Value per Acre	Ann%chg AvgVal/acre	Cmltv%chg AvgVal/Acre	Value	Acres	Avg Value per Acre	Ann%chg AvgVal/acre	Cmltv%chg AvgVal/Acre
2005	11,666	2,333	5			243	49	5			73,418,793	365,427	201		
2006	11,666	2,333	5	0.00%	0.00%	243	49	5	0.00%	0.00%	77,043,678	365,417	211	4.94%	4.94%
2007	11,666	2,333	5	0.00%	0.00%	243	49	5	0.00%	0.00%	79,840,360	365,416	218	3.63%	8.75%
2008	11,316	2,263	5	0.00%	0.00%	243	49	5	0.00%	0.00%	85,306,502	365,411	233	6.85%	16.20%
2009	33,858	2,257	15	200.00%	200.00%	243	49	5	0.00%	0.00%	102,799,876	365,323	281	20.54%	40.06%
2010	33,978	2,265	15	0.00%	200.00%	243	49	5	0.00%	0.00%	135,186,181	365,304	370	31.51%	84.19%
2011	33,933	2,262	15	0.00%	200.00%	243	49	5	0.00%	0.00%	137,159,081	365,302	375	1.46%	86.88%
2012	31,838	2,122	15	0.00%	200.01%	188	38	5	0.12%	0.12%	136,105,448	361,816	376	0.19%	87.23%
2013	31,556	2,104	15	0.00%	200.02%	188	38	5	0.00%	0.12%	153,383,706	361,819	424	12.69%	111.00%
2014	31,556	2,104	15	0.00%	200.02%	188	38	5	0.00%	0.12%	197,006,458	361,788	545	28.45%	171.03%
2015	31,763	2,107	15	0.50%	201.53%	188	38	5	0.00%	0.12%	242,985,923	361,766	672	23.35%	234.31%

57
LOGAN

Rate Annual %chg Average Value/Acre: 12.83%

(1) Valuations from County Abstracts vs Certificate of Taxes Levied Reports (CTL) will vary due to different reporting dates. Source: 2005 - 2015 County Abstract Reports
Agland Assessment Level 1998 to 2006 = 80%; 2007 & forward = 75% NE Dept. of Revenue, Property Assessment Division Prepared as of 03/01/2016

2015 County and Municipal Valuations by Property Type

Pop.	County:	Personal Prop	StateAsd PP	StateAsdReal	Residential	Commercial	Industrial	Recreation	Agland	Agdwell&HS	AgImprv&FS	Minerals	Total Value
763	LOGAN	14,181,711	998,110	165,561	13,103,383	3,651,447	0	0	242,985,551	11,552,714	3,690,697	860	290,330,034
cnty sectorvalue % of total value:		4.88%	0.34%	0.06%	4.51%	1.26%			83.69%	3.98%	1.27%	0.00%	100.00%
Pop.	Municipality:	Personal Prop	StateAsd PP	StateAsd Real	Residential	Commercial	Industrial	Recreation	Agland	Agdwell&HS	AgImprv&FS	Minerals	Total Value
32	GANDY	0	0	0	796,143	10,075	0	0	0	0	0	0	806,218
4.19%	%sector of county sector				6.08%	0.28%							0.28%
	%sector of municipality				98.75%	1.25%							100.00%
305	STAPLETON	95,324	182,822	10,785	7,671,874	1,260,145	0	0	0	0	0	0	9,220,950
39.97%	%sector of county sector	0.67%	18.32%	6.51%	58.55%	34.51%							3.18%
	%sector of municipality	1.03%	1.98%	0.12%	83.20%	13.67%							100.00%
337	Total Municipalities	95,324	182,822	10,785	8,468,017	1,270,220	0	0	0	0	0	0	10,027,168
44.17%	%all municip.sect of cnty	0.67%	18.32%	6.51%	64.62%	34.79%							3.45%

Cnty#	County
57	LOGAN

Sources: 2015 Certificate of Taxes Levied CTL, 2010 US Census; Dec. 2015 Municipality Population per Research Division NE Dept. of Revenue, Property Assessment Division Prepared as of 03/01/2016