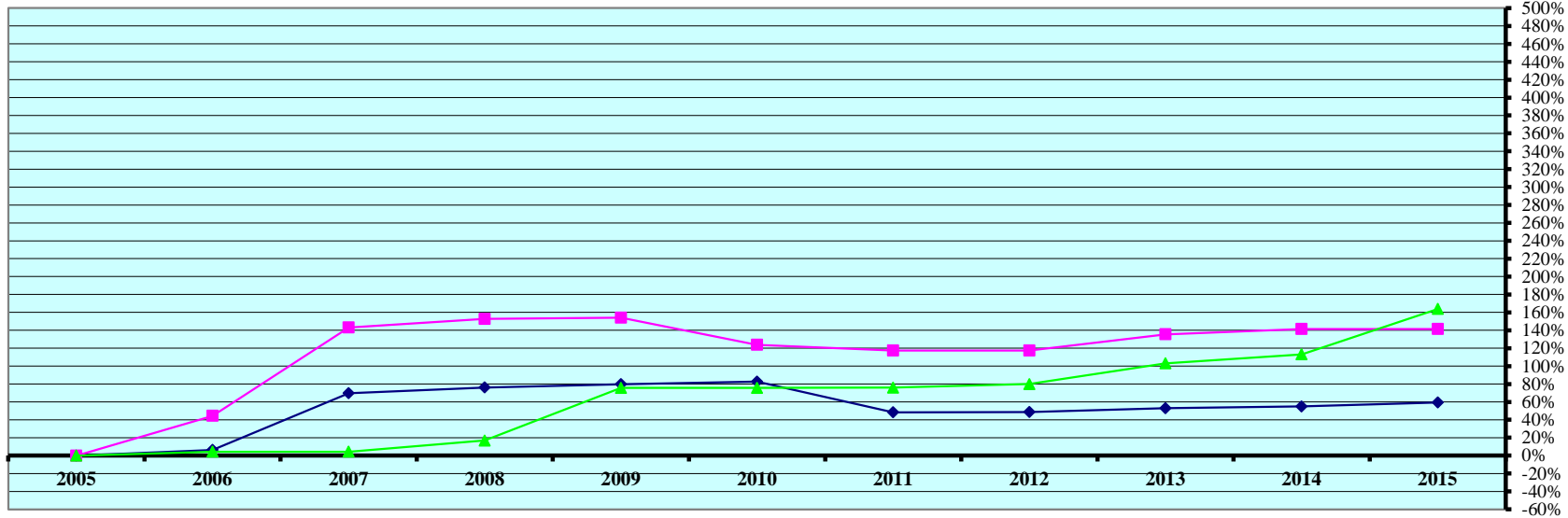


### REAL PROPERTY VALUATIONS - Cumulative %Change 2005-2015



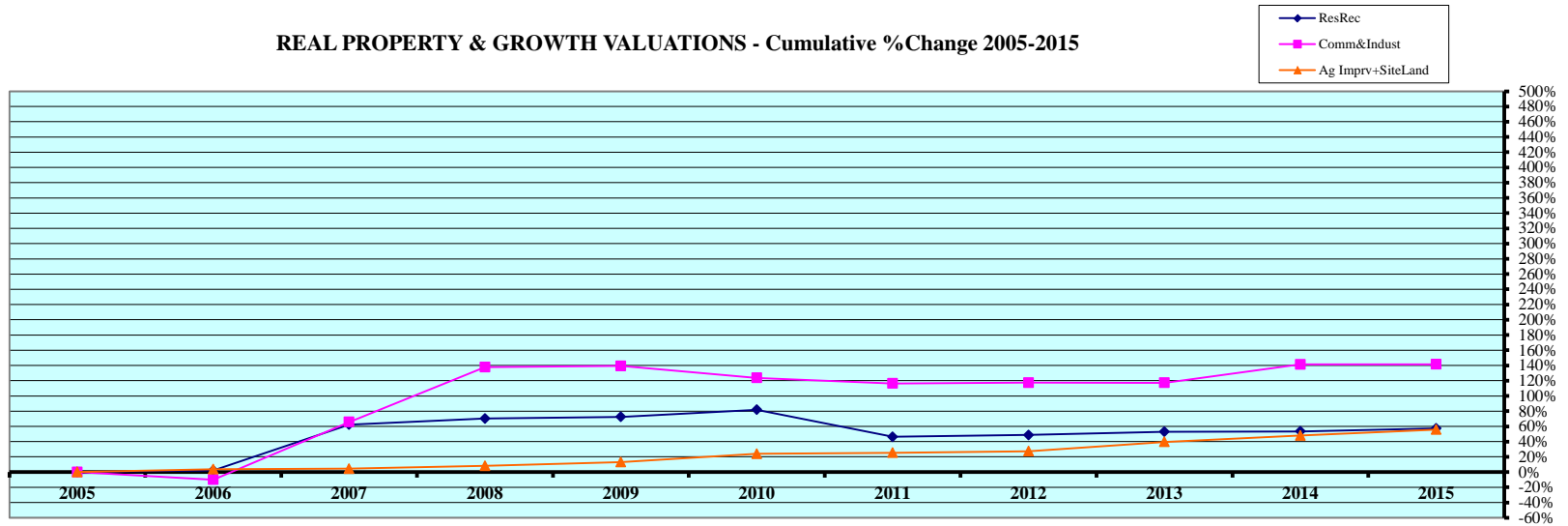
Tax Year	Residential & Recreational <sup>(1)</sup>				Commercial & Industrial <sup>(1)</sup>				Total Agricultural Land <sup>(1)</sup>			
	Value	Amnt Value Chg	Ann.%chg	Cmltv%chg	Value	Amnt Value Chg	Ann.%chg	Cmltv%chg	Value	Amnt Value Chg	Ann.%chg	Cmltv%chg
2005	8,842,234	--	--	--	5,086,997	--	--	--	55,215,102	--	--	--
2006	9,405,736	563,502	6.37%	6.37%	7,344,114	2,257,117	44.37%	44.37%	57,583,185	2,368,083	4.29%	4.29%
2007	14,997,947	5,592,211	59.46%	69.62%	12,369,265	5,025,151	68.42%	143.15%	57,620,413	37,228	0.06%	4.36%
2008	15,568,685	570,738	3.81%	76.07%	12,855,887	486,622	3.93%	152.72%	64,534,741	6,914,328	12.00%	16.88%
2009	15,890,039	321,354	2.06%	79.71%	12,920,806	64,919	0.50%	154.00%	96,941,673	32,406,932	50.22%	75.57%
2010	16,142,533	252,494	1.59%	82.56%	11,383,154	-1,537,652	-11.90%	123.77%	96,996,511	54,838	0.06%	75.67%
2011	13,115,842	-3,026,691	-18.75%	48.33%	11,054,650	-328,504	-2.89%	117.31%	97,130,672	134,161	0.14%	75.91%
2012	13,151,486	35,644	0.27%	48.73%	11,055,106	456	0.00%	117.32%	99,333,385	2,202,713	2.27%	79.90%
2013	13,531,459	379,973	2.89%	53.03%	11,982,903	927,797	8.39%	135.56%	112,194,565	12,861,180	12.95%	103.20%
2014	13,692,746	161,287	1.19%	54.86%	12,280,943	298,040	2.49%	141.42%	117,630,542	5,435,977	4.85%	113.04%
2015	14,090,232	397,486	2.90%	59.35%	12,281,816	873	0.01%	141.44%	145,681,934	28,051,392	23.85%	163.84%

Rate Annual %chg: Residential & Recreational **4.77%** Commercial & Industrial **9.21%** Agricultural Land **10.19%**

Cnty# **46**  
County **HOOKER**

(1) Residential & Recreational excludes Agric. dwelling & farm home site land. Commercial & Industrial excludes minerals. Agricultural land includes irrigated, dry, grass, waste, & other agland, excludes farm site land.

**REAL PROPERTY & GROWTH VALUATIONS - Cumulative %Change 2005-2015**



Tax Year	Residential & Recreational <sup>(1)</sup>						Commercial & Industrial <sup>(1)</sup>						
	Value	Growth Value	% growth of value	Value Exclud. Growth	Ann.%chg w/o grwth	Cmltv%chg w/o grwth	Value	Growth Value	% growth of value	Value Exclud. Growth	Ann.%chg w/o grwth	Cmltv%chg w/o grwth	
2005	8,842,234	288,773	3.27%	8,553,461	--	--	5,086,997	335,488	6.60%	4,751,509	--	--	
2006	9,405,736	379,611	4.04%	9,026,125	2.08%	2.08%	7,344,114	2,760,467	37.59%	4,583,647	-9.89%	-9.89%	
2007	14,997,947	635,408	4.24%	14,362,539	52.70%	62.43%	12,369,265	3,940,453	31.86%	8,428,812	14.77%	65.69%	
2008	15,568,685	514,003	3.30%	15,054,682	0.38%	70.26%	12,855,887	756,885	5.89%	12,099,002	-2.18%	137.84%	
2009	15,890,039	642,444	4.04%	15,247,595	-2.06%	72.44%	12,920,806	748,402	5.79%	12,172,404	-5.32%	139.28%	
2010	16,142,533	55,926	0.35%	16,086,607	1.24%	81.93%	11,383,154	0	0.00%	11,383,154	-11.90%	123.77%	
2011	13,115,842	174,321	1.33%	12,941,521	-19.83%	46.36%	11,054,650	47,256	0.43%	11,007,394	-3.30%	116.38%	
2012	13,151,486	5,087	0.04%	13,146,399	0.23%	48.68%	11,055,106	0	0.00%	11,055,106	0.00%	117.32%	
2013	13,531,459	2,282	0.02%	13,529,177	2.87%	53.01%	11,982,903	934,587	7.80%	11,048,316	-0.06%	117.19%	
2014	13,692,746	124,872	0.91%	13,567,874	0.27%	53.44%	12,280,943	7,440	0.06%	12,273,503	2.43%	141.27%	
2015	14,090,232	189,217	1.34%	13,901,015	1.52%	57.21%	12,281,816	0	0.00%	12,281,816	0.01%	141.44%	
Rate Ann%chg	<b>4.77%</b>			Resid & Rec. w/o growth			<b>3.94%</b>			C & I w/o growth			<b>-1.55%</b>

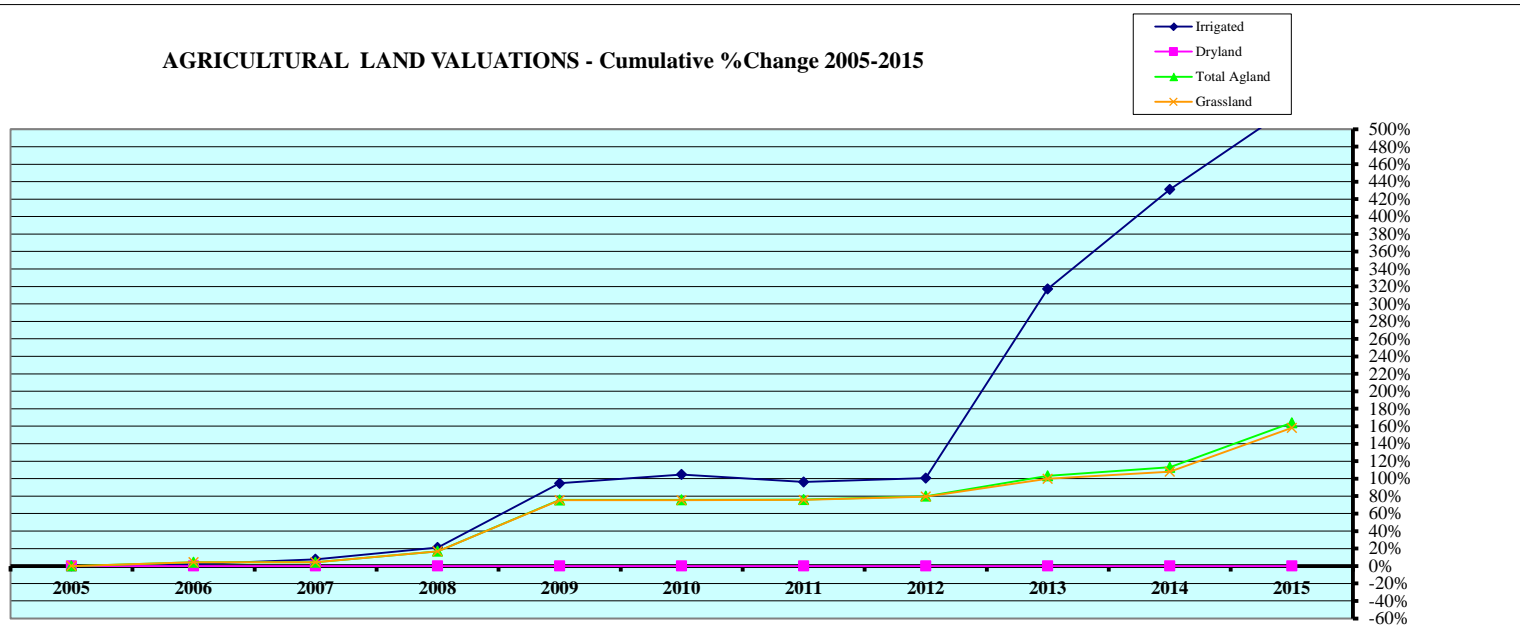
Tax Year	Ag Improvements & Site Land <sup>(1)</sup>							
	Agric. Dwelling & Homesite Value	Agoutbldg & Farmsite Value	Ag Imprv&Site Total Value	Growth Value	% growth of value	Value Exclud. Growth	Ann.%chg w/o grwth	Cmltv%chg w/o grwth
2005	2,176,884	57,250	2,234,134	0	0.00%	2,234,134	--	--
2006	2,270,282	57,515	2,327,797	5,900	0.25%	2,321,897	3.93%	3.93%
2007	2,354,947	76,462	2,431,409	99,512	4.09%	2,331,897	0.18%	4.38%
2008	2,440,465	76,977	2,517,442	99,512	3.95%	2,417,930	-0.55%	8.23%
2009	2,592,093	93,802	2,685,895	160,190	5.96%	2,525,705	0.33%	13.05%
2010	2,692,609	102,989	2,795,598	24,355	0.87%	2,771,243	3.18%	24.04%
2011	2,754,139	107,444	2,861,583	61,530	2.15%	2,800,053	0.16%	25.33%
2012	2,613,981	451,495	3,065,476	218,978	7.14%	2,846,498	-0.53%	27.41%
2013	2,654,471	502,661	3,157,132	36,541	1.16%	3,120,591	1.80%	39.68%
2014	2,836,642	518,852	3,355,494	51,500	1.53%	3,303,994	4.65%	47.89%
2015	2,957,169	639,170	3,596,339	115,564	3.21%	3,480,775	3.73%	55.80%
Rate Ann%chg	<b>3.11%</b>	<b>27.29%</b>	<b>4.88%</b>	Ag Imprv+Site w/o growth			<b>1.69%</b>	

(1) Residential & Recreational excludes AgDwelling & farm home site land; Comm. & Indust. excludes minerals; Agric. land includes irrigated, dry, grass, waste & other agland, excludes farm site land. Real property growth is value attributable to new construction, additions to existing buildings, and any improvements to real property which increase the value of such property.

Sources:  
Value; 2005 - 2015 CTL  
Growth Value; 2005-2015 Abstract of Asmnt Rpt.

NE Dept. of Revenue, Property Assessment Division  
Prepared as of 03/01/2016

AGRICULTURAL LAND VALUATIONS - Cumulative % Change 2005-2015



Tax Year	Irrigated Land				Dryland				Grassland			
	Value	Value Chg	Ann%chg	Cmltv%chg	Value	Value Chg	Ann%chg	Cmltv%chg	Value	Value Chg	Ann%chg	Cmltv%chg
2005	869,500	--	--	--	0	--	--	--	54,343,257	--	--	--
2006	886,890	17,390	2.00%	2.00%	0	0			56,701,450	2,358,193	4.34%	4.34%
2007	936,352	49,462	5.58%	7.69%	0	0			56,681,716	-19,734	-0.03%	4.30%
2008	1,053,072	116,720	12.47%	21.11%	0	0			63,446,721	6,765,005	11.94%	16.75%
2009	1,692,227	639,155	60.69%	94.62%	0	0			95,244,756	31,798,035	50.12%	75.27%
2010	1,780,240	88,013	5.20%	104.74%	0	0			95,211,581	-33,175	-0.03%	75.20%
2011	1,705,440	-74,800	-4.20%	96.14%	0	0			95,420,542	208,961	0.22%	75.59%
2012	1,744,201	38,761	2.27%	100.60%	0	0			97,584,494	2,163,952	2.27%	79.57%
2013	3,626,000	1,881,799	107.89%	317.02%	0	0			108,563,875	10,979,381	11.25%	99.77%
2014	4,616,976	990,976	27.33%	430.99%	0	0			113,008,651	4,444,776	4.09%	107.95%
2015	5,442,855	825,879	17.89%	525.98%	0	0			140,234,164	27,225,513	24.09%	158.05%

Rate Ann.%chg: Irrigated  Dryland  Grassland

Tax Year	Waste Land <sup>(1)</sup>				Other Agland <sup>(1)</sup>				Total Agricultural			
	Value	Value Chg	Ann%chg	Cmltv%chg	Value	Value Chg	Ann%chg	Cmltv%chg	Value	Value Chg	Ann%chg	Cmltv%chg
2005	2,345	--	--	--	0	--	--	--	55,215,102	--	--	--
2006	2,345	0	0.00%	0.00%	(7,500)	-7,500			57,583,185	2,368,083	4.29%	4.29%
2007	2,345	0	0.00%	0.00%	0	7,500			57,620,413	37,228	0.06%	4.36%
2008	2,345	0	0.00%	0.00%	32,603	32,603			64,534,741	6,914,328	12.00%	16.88%
2009	4,690	2,345	100.00%	100.00%	0	-32,603	-100.00%		96,941,673	32,406,932	50.22%	75.57%
2010	4,690	0	0.00%	100.00%	0	0			96,996,511	54,838	0.06%	75.67%
2011	4,690	0	0.00%	100.00%	0	0			97,130,672	134,161	0.14%	75.91%
2012	4,690	0	0.00%	100.00%	0	0			99,333,385	2,202,713	2.27%	79.90%
2013	4,690	0	0.00%	100.00%	0	0			112,194,565	12,861,180	12.95%	103.20%
2014	4,915	225	4.80%	109.59%	0	0			117,630,542	5,435,977	4.85%	113.04%
2015	4,915	0	0.00%	109.59%	0	0			145,681,934	28,051,392	23.85%	163.84%

Cnty#   
County

Rate Ann.%chg: Total Agric Land

**AGRICULTURAL LAND - AVERAGE VALUE PER ACRE - Cumulative % Change 2005-2015 (from County Abstract Reports)<sup>(1)</sup>**

Tax Year	IRRIGATED LAND					DRYLAND					GRASSLAND				
	Value	Acres	Avg Value per Acre	Ann%chg AvgVal/acre	Cmltv%chg AvgVal/Acre	Value	Acres	Avg Value per Acre	Ann%chg AvgVal/acre	Cmltv%chg AvgVal/Acre	Value	Acres	Avg Value per Acre	Ann%chg AvgVal/acre	Cmltv%chg AvgVal/Acre
2005	869,500	3,478	250			0	0				54,345,849	451,857	120		
2006	886,890	3,478	255	2.00%	2.00%	0	0				56,696,509	451,835	125	4.33%	4.33%
2007	937,627	3,677	255	0.00%	2.00%	0	0				56,683,535	451,736	125	0.00%	4.33%
2008	1,053,072	3,761	280	9.80%	12.00%	0	0				63,402,905	451,495	140	11.91%	16.76%
2009	1,692,227	3,846	440	57.14%	76.00%	0	0				95,347,453	451,767	211	50.29%	75.48%
2010	1,774,520	4,033	440	0.00%	76.00%	0	0				95,222,207	451,178	211	0.00%	75.48%
2011	1,705,440	3,876	440	0.00%	76.00%	0	0				95,404,798	452,033	211	0.00%	75.48%
2012	1,744,201	3,876	450	2.27%	80.00%	0	0				97,585,316	452,108	216	2.27%	79.46%
2013	3,876,000	3,876	1,000	122.22%	300.00%	0	0				108,503,875	452,104	240	11.19%	99.55%
2014	4,601,251	3,681	1,250	25.00%	400.00%	0	0				113,044,600	451,804	250	4.25%	108.03%
2015	5,442,855	3,629	1,500	20.00%	500.00%	0	0				140,233,931	451,788	310	24.06%	158.08%

Rate Annual %chg Average Value/Acre: 19.62%

9.94%

Tax Year	WASTE LAND <sup>(2)</sup>					OTHER AGLAND <sup>(2)</sup>					TOTAL AGRICULTURAL LAND <sup>(1)</sup>				
	Value	Acres	Avg Value per Acre	Ann%chg AvgVal/acre	Cmltv%chg AvgVal/Acre	Value	Acres	Avg Value per Acre	Ann%chg AvgVal/acre	Cmltv%chg AvgVal/Acre	Value	Acres	Avg Value per Acre	Ann%chg AvgVal/acre	Cmltv%chg AvgVal/Acre
2005	2,345	469	5			0	0				55,217,694	455,804	121		
2006	2,345	469	5	0.00%	0.00%	0	0				57,585,744	455,782	126	4.29%	4.29%
2007	2,345	469	5	0.00%	0.00%	0	0				57,623,507	455,882	126	0.04%	4.34%
2008	2,345	469	5	0.00%	0.00%	0	0				64,458,322	455,725	141	11.90%	16.76%
2009	4,690	469	10	100.00%	100.00%	0	0				97,044,370	456,082	213	50.44%	75.64%
2010	4,690	469	10	0.00%	100.00%	0	0				97,001,417	455,680	213	0.04%	75.72%
2011	4,690	469	10	0.00%	100.00%	0	0				97,114,928	456,378	213	-0.04%	75.66%
2012	4,690	469	10	0.00%	100.00%	0	0				99,334,207	456,453	218	2.27%	79.64%
2013	4,690	469	10	0.00%	100.00%	0	0				112,384,565	456,449	246	13.14%	103.24%
2014	4,690	469	10	0.00%	100.00%	0	0				117,650,541	455,954	258	4.80%	113.00%
2015	4,915	492	10	0.00%	100.00%	0	0				145,681,701	455,908	320	23.84%	163.77%

46  
**HOOKER**

Rate Annual %chg Average Value/Acre: 10.19%

(1) Valuations from County Abstracts vs Certificate of Taxes Levied Reports (CTL) will vary due to different reporting dates. Source: 2005 - 2015 County Abstract Reports  
Aglnd Assessment Level 1998 to 2006 = 80%; 2007 & forward = 75% NE Dept. of Revenue, Property Assessment Division Prepared as of 03/01/2016

2015 County and Municipal Valuations by Property Type

Pop.	County:	Personal Prop	StateAsd PP	StateAsdReal	Residential	Commercial	Industrial	Recreation	Agland	Agdwell&HS	AgImprv&FS	Minerals	Total Value
736	HOOKER	3,911,144	11,294,733	44,687,584	14,090,232	12,281,816	0	0	145,681,934	2,957,169	639,170	0	235,543,782
cnty sectorvalue % of total value:		1.66%	4.80%	18.97%	5.98%	5.21%			61.85%	1.26%	0.27%		100.00%
Pop.	Municipality:	Personal Prop	StateAsd PP	StateAsd Real	Residential	Commercial	Industrial	Recreation	Agland	Agdwell&HS	AgImprv&FS	Minerals	Total Value
509	MULLEN	697,492	394,099	1,136,214	9,637,825	1,906,468	0	0	319,282	416	0	0	14,091,796
69.16%	%sector of county sector	17.83%	3.49%	2.54%	68.40%	15.52%			0.22%	0.01%			5.98%
	%sector of municipality	4.95%	2.80%	8.06%	68.39%	13.53%			2.27%	0.00%			100.00%
509	Total Municipalities	697,492	394,099	1,136,214	9,637,825	1,906,468	0	0	319,282	416	0	0	14,091,796
69.16%	%all municip.sect of cnty	17.83%	3.49%	2.54%	68.40%	15.52%			0.22%	0.01%			5.98%

Cnty#	County
46	HOOKER

Sources: 2015 Certificate of Taxes Levied CTL, 2010 US Census; Dec. 2015 Municipality Population per Research Division NE Dept. of Revenue, Property Assessment Division Prepared as of 03/01/2016

CHART 5

EXHIBIT

46B

Page 5