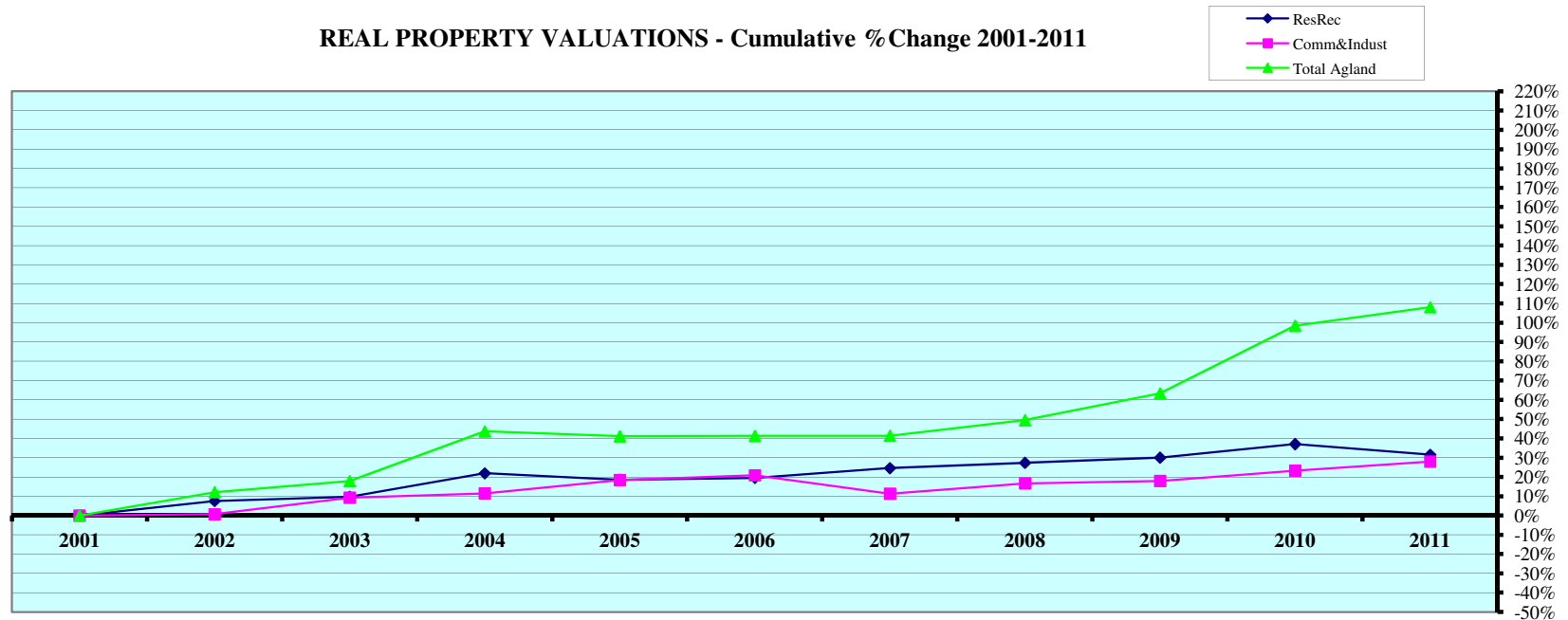


REAL PROPERTY VALUATIONS - Cumulative % Change 2001-2011



Tax Year	Residential & Recreational ⁽¹⁾				Commercial & Industrial ⁽¹⁾				Total Agricultural Land ⁽¹⁾			
	Value	Amnt Value Chg	Ann.%chg	Cmltv%chg	Value	Amnt Value Chg	Ann.%chg	Cmltv%chg	Value	Amnt Value Chg	Ann.%chg	Cmltv%chg
2001	59,700,047	--	--	--	18,068,627	--	--	--	203,427,304	--	--	--
2002	64,210,381	4,510,334	7.55%	7.55%	18,195,006	126,379	0.70%	0.70%	228,077,255	24,649,951	12.12%	12.12%
2003	65,499,630	1,289,249	2.01%	9.71%	19,742,011	1,547,005	8.50%	9.26%	239,713,415	11,636,160	5.10%	17.84%
2004	72,803,344	7,303,714	11.15%	21.95%	20,144,598	402,587	2.04%	11.49%	292,153,050	52,439,635	21.88%	43.62%
2005	70,769,443	-2,033,901	-2.79%	18.54%	21,400,067	1,255,469	6.23%	18.44%	287,065,846	-5,087,204	-1.74%	41.11%
2006	71,357,746	588,303	0.83%	19.53%	21,842,869	442,802	2.07%	20.89%	287,425,696	359,850	0.13%	41.29%
2007	74,391,289	3,033,543	4.25%	24.61%	20,120,520	-1,722,349	-7.89%	11.36%	287,581,590	155,894	0.05%	41.37%
2008	76,024,306	1,633,017	2.20%	27.34%	21,081,261	960,741	4.77%	16.67%	304,083,324	16,501,734	5.74%	49.48%
2009	77,638,609	1,614,303	2.12%	30.05%	21,308,114	226,853	1.08%	17.93%	332,322,814	28,239,490	9.29%	63.36%
2010	81,834,796	4,196,187	5.40%	37.08%	22,279,818	971,704	4.56%	23.31%	403,552,541	71,229,727	21.43%	98.38%
2011	78,529,113	-3,305,683	-4.04%	31.54%	23,132,674	852,856	3.83%	28.03%	423,222,031	19,669,490	4.87%	108.05%

Rate Annual %chg: Residential & Recreational

Commercial & Industrial

Agricultural Land

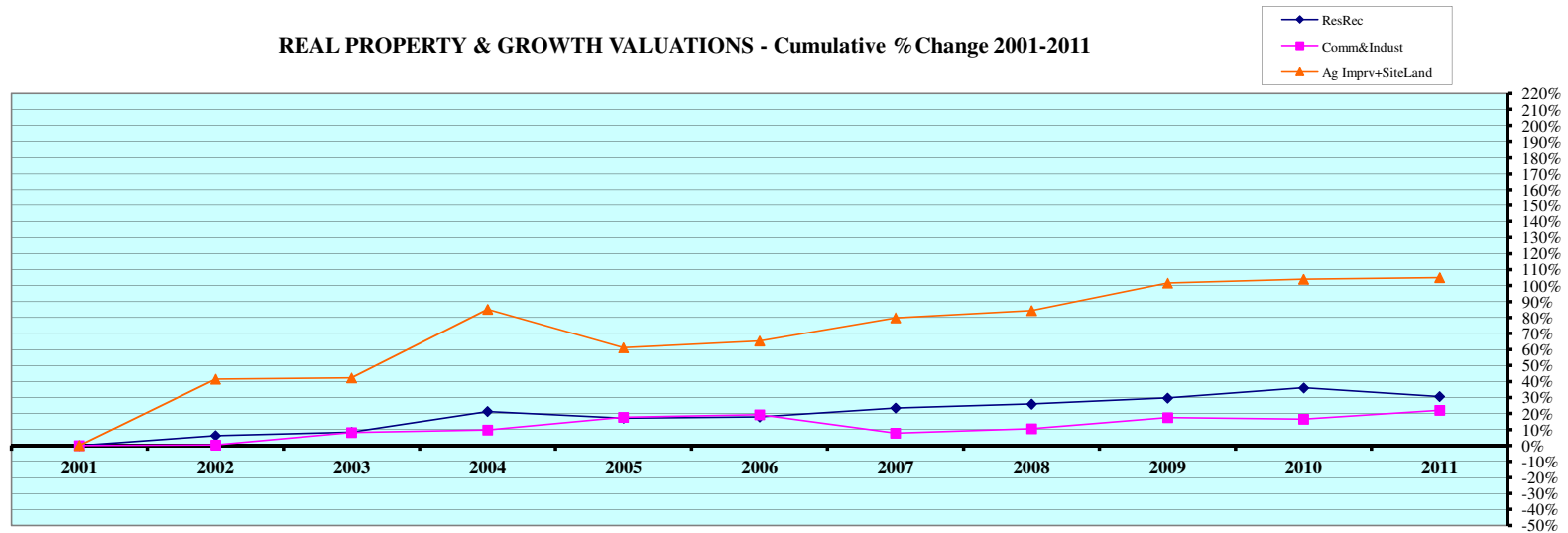
Cnty#
County

FL area

CHART 1 EXHIBIT 81B Page 1

(1) Residential & Recreational excludes Agric. dwelling & farm home site land. Commercial & Industrial excludes minerals. Agricultural land includes irrigated, dry, grass, waste, & other agland, excludes farm site land.

REAL PROPERTY & GROWTH VALUATIONS - Cumulative % Change 2001-2011



Tax Year	Residential & Recreational ⁽¹⁾						Commercial & Industrial ⁽¹⁾					
	Value	Growth Value	% growth of value	Value Exclud. Growth	Ann.%chg w/o grwth	Cmltv%chg w/o grwth	Value	Growth Value	% growth of value	Value Exclud. Growth	Ann.%chg w/o grwth	Cmltv%chg w/o grwth
2001	59,700,047	700,655	1.17%	58,999,392	--	--	18,068,627	88,003	0.49%	17,980,624	--	--
2002	64,210,381	793,609	1.24%	63,416,772	6.23%	6.23%	18,195,006	67,704	0.37%	18,127,302	0.32%	0.32%
2003	65,499,630	819,872	1.25%	64,679,758	0.73%	8.34%	19,742,011	189,073	0.96%	19,552,938	7.46%	8.21%
2004	72,803,344	362,496	0.50%	72,440,848	10.60%	21.34%	20,144,598	334,861	1.66%	19,809,737	0.34%	9.64%
2005	70,769,443	826,835	1.17%	69,942,608	-3.93%	17.16%	21,400,067	148,753	0.70%	21,251,314	5.49%	17.61%
2006	71,357,746	980,039	1.37%	70,377,707	-0.55%	17.89%	21,842,869	279,988	1.28%	21,562,881	0.76%	19.34%
2007	74,391,289	684,822	0.92%	73,706,467	3.29%	23.46%	20,120,520	642,585	3.19%	19,477,935	-10.83%	7.80%
2008	76,024,306	845,055	1.11%	75,179,251	1.06%	25.93%	21,081,261	1,126,637	5.34%	19,954,624	-0.82%	10.44%
2009	77,638,609	196,556	0.25%	77,442,053	1.86%	29.72%	21,308,114	98,280	0.46%	21,209,834	0.61%	17.38%
2010	81,834,796	601,602	0.74%	81,233,194	4.63%	36.07%	22,279,818	1,237,604	5.55%	21,042,214	-1.25%	16.46%
2011	78,529,113	526,299	0.67%	78,002,814	-4.68%	30.66%	23,132,674	1,070,955	4.63%	22,061,719	-0.98%	22.10%
Rate Ann%chg	2.78%		Resid & Rec. w/o growth			1.92%	2.50%		C & I w/o growth			0.11%

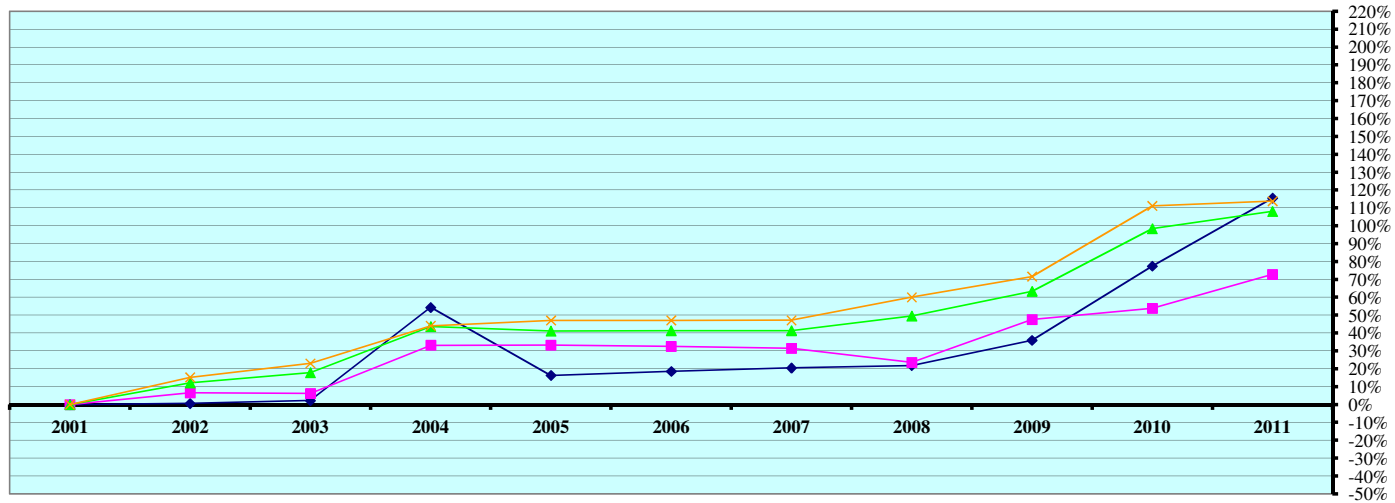
Tax Year	Ag Improvements & Site Land ⁽¹⁾			Growth Value	% growth of value	Value Exclud. Growth	Ann.%chg w/o grwth	Cmltv%chg w/o grwth
	Agric. Dwelling & Homesite Value	Agoutbldg & Farmsite Value	Ag Imprv&Site Total Value					
2001	19,542,114	8,295,196	27,837,310	659,953	2.37%	27,177,357	--	--
2002	28,054,018	11,775,464	39,829,482	429,418	1.08%	39,400,064	41.54%	41.54%
2003	28,540,898	12,052,929	40,593,827	1,007,446	2.48%	39,586,381	-0.61%	42.21%
2004	39,609,445	13,201,163	52,810,608	1,239,817	2.35%	51,570,791	27.04%	85.26%
2005	34,392,942	11,617,657	46,010,599	1,167,220	2.54%	44,843,379	-15.09%	61.09%
2006	34,877,954	12,034,936	46,912,890	876,568	1.87%	46,036,322	0.06%	65.38%
2007	38,885,750	12,281,474	51,167,224	1,086,216	2.12%	50,081,008	6.75%	79.91%
2008	38,936,800	12,557,519	51,494,319	165,176	0.32%	51,329,143	0.32%	84.39%
2009	42,582,732	13,535,929	56,118,661	6,930	0.01%	56,111,731	8.97%	101.57%
2010	42,756,802	14,035,360	56,792,162	8,180	0.01%	56,783,982	1.19%	103.99%
2011	42,797,215	14,304,365	57,101,580	8,180	0.01%	57,093,400	0.53%	105.10%
Rate Ann%chg	8.15%	5.60%	7.45%	Ag Imprv+Site w/o growth			7.07%	

(1) Residential & Recreational excludes AgDwelling & farm home site land; Comm. & Indust. excludes minerals; Agric. land includes irrigated, dry, grass, waste & other agland, excludes farm site land. Real Prop Growth is value attributable to new construction, additions to existing buildings, and any improvements to real property which increase the value of such property.

Sources:
Value; 2001 - 2011 CTL
Growth Value; 2001-2011 Abstract of Asmnt Rpt.

NE Dept. of Revenue Property Assessment Division
Prepared as of 03/01/2012

AGRICULTURAL LAND VALUATIONS - Cumulative % Change 2001-2011



Tax Year	Irrigated Land				Dryland				Grassland			
	Value	Value Chg	Ann%chg	Cmltv%chg	Value	Value Chg	Ann%chg	Cmltv%chg	Value	Value Chg	Ann%chg	Cmltv%chg
2001	24,922,014	--	--	--	32,811,858	--	--	--	145,473,834	--	--	--
2002	25,068,639	146,625	0.59%	0.59%	34,964,453	2,152,595	6.56%	6.56%	167,605,829	22,131,995	15.21%	15.21%
2003	25,471,269	402,630	1.61%	2.20%	34,829,810	-134,643	-0.39%	6.15%	178,975,868	11,370,039	6.78%	23.03%
2004	38,457,765	12,986,496	50.98%	54.31%	43,685,314	8,855,504	25.43%	33.14%	209,572,056	30,596,188	17.10%	44.06%
2005	28,973,030	-9,484,735	-24.66%	16.25%	43,741,336	56,022	0.13%	33.31%	213,918,553	4,346,497	2.07%	47.05%
2006	29,540,725	567,695	1.96%	18.53%	43,503,972	-237,364	-0.54%	32.59%	213,955,524	36,971	0.02%	47.07%
2007	30,023,917	483,192	1.64%	20.47%	43,112,424	-391,548	-0.90%	31.39%	214,020,877	65,353	0.03%	47.12%
2008	30,364,666	340,749	1.13%	21.84%	40,526,668	-2,585,756	-6.00%	23.51%	232,767,593	18,746,716	8.76%	60.01%
2009	33,871,437	3,506,771	11.55%	35.91%	48,397,133	7,870,465	19.42%	47.50%	249,623,871	16,856,278	7.24%	71.59%
2010	44,220,109	10,348,672	30.55%	77.43%	50,471,545	2,074,412	4.29%	53.82%	307,174,833	57,550,962	23.06%	111.15%
2011	53,703,720	9,483,611	21.45%	115.49%	56,706,976	6,235,431	12.35%	72.82%	310,968,927	3,794,094	1.24%	113.76%

Rate Ann.%chg: Irrigated **7.98%** Dryland **5.62%** Grassland **7.89%**

Tax Year	Waste Land ⁽¹⁾				Other Agland ⁽¹⁾				Total Agricultural			
	Value	Value Chg	Ann%chg	Cmltv%chg	Value	Value Chg	Ann%chg	Cmltv%chg	Value	Value Chg	Ann%chg	Cmltv%chg
2001					219,598	--	--	--	203,427,304	--	--	--
2002					438,334	218,736	99.61%	99.61%	228,077,255	24,649,951	12.12%	12.12%
2003	436,468	--	--	--	0	-438,334	-100.00%	-100.00%	239,713,415	11,636,160	5.10%	17.84%
2004	437,915	1,447	0.33%	0.33%	0	0		-100.00%	292,153,050	52,439,635	21.88%	43.62%
2005	432,927	-4,988	-1.14%	-0.81%	0	0		-100.00%	287,065,846	-5,087,204	-1.74%	41.11%
2006	425,475	-7,452	-1.72%	-2.52%	0	0		-100.00%	287,425,696	359,850	0.13%	41.29%
2007	424,372	-1,103	-0.26%	-2.77%	0	0			287,581,590	155,894	0.05%	41.37%
2008	424,397	25	0.01%	-2.77%	0	0			304,083,324	16,501,734	5.74%	49.48%
2009	430,373	5,976	1.41%	-1.40%	0	0			332,322,814	28,239,490	9.29%	63.36%
2010	1,686,054	1,255,681	291.77%	286.29%	0	0			403,552,541	71,229,727	21.43%	98.38%
2011	1,842,408	156,354	9.27%	322.12%	0	0			423,222,031	19,669,490	4.87%	108.05%

Cnty# **81** FL area **1** Rate Ann.%chg: Total Agric Land **7.60%**
 County **SHERIDAN**

(1) Prior to 2003, waste land data was reported with other agland due to CTL reporting form structure. Beginning 2003 waste land isolated from other agland.
 Source: 2001 - 2011 Certificate of Taxes Levied Reports CTL NE Dept. of Revenue Property Assessment Division Prepared as of 03/01/2012

AGRICULTURAL LAND - AVERAGE VALUE PER ACRE - Cumulative % Change 2001-2011 (from Abstracts)⁽¹⁾

Tax Year	IRRIGATED LAND					DRYLAND					GRASSLAND				
	Value	Acres	Avg Value per Acre	Ann%chg AvgVal/acre	Cmltv%chg AvgVal/Acre	Value	Acres	Avg Value per Acre	Ann%chg AvgVal/acre	Cmltv%chg AvgVal/Acre	Value	Acres	Avg Value per Acre	Ann%chg AvgVal/acre	Cmltv%chg AvgVal/Acre
2001	25,039,463	61,723	406		0.00%	33,714,665	176,763	191		0.00%	144,794,276	1,268,225	114		0.00%
2002	25,048,460	61,375	408	0.49%	0.49%	35,250,700	170,813	206	7.85%	7.85%	167,392,033	1,274,169	131	14.91%	14.91%
2003	25,466,711	62,071	410	0.49%	0.99%	34,886,595	168,852	207	0.49%	8.38%	178,949,506	1,275,732	140	6.87%	22.81%
2004	40,921,623	63,069	649	58.25%	59.81%	45,259,728	168,274	269	29.93%	40.82%	208,383,520	1,275,245	163	16.72%	43.34%
2005	28,898,227	65,009	445	-31.49%	9.49%	43,805,961	160,891	272	1.23%	42.55%	213,943,855	1,281,006	167	2.21%	46.50%
2006	29,346,285	66,032	444	-0.02%	9.46%	43,602,079	160,114	272	0.02%	42.58%	213,971,321	1,281,248	167	-0.01%	46.49%
2007	30,014,944	67,444	445	0.14%	9.61%	43,144,696	158,523	272	-0.06%	42.50%	214,008,248	1,281,440	167	0.00%	46.50%
2008	30,389,112	68,303	445	-0.03%	9.59%	40,513,461	157,604	257	-5.55%	34.59%	232,580,396	1,280,056	182	8.80%	59.38%
2009	33,815,850	69,403	487	9.51%	20.01%	48,492,934	157,565	308	19.73%	61.13%	249,486,746	1,278,261	195	7.42%	71.21%
2010	44,106,721	69,523	634	30.21%	56.26%	50,417,408	156,856	321	4.44%	68.29%	306,739,027	1,277,676	240	23.00%	110.59%
2011	53,720,037	69,744	770	21.41%	89.72%	57,315,317	156,865	365	13.68%	91.30%	311,402,036	1,279,564	243	1.37%	113.48%

Rate Annual %chg Average Value/Acre: 6.61%

6.70%

7.88%

Tax Year	WASTE LAND ⁽²⁾					OTHER AGLAND ⁽²⁾					TOTAL AGRICULTURAL LAND ⁽¹⁾				
	Value	Acres	Avg Value per Acre	Ann%chg AvgVal/acre	Cmltv%chg AvgVal/Acre	Value	Acres	Avg Value per Acre	Ann%chg AvgVal/acre	Cmltv%chg AvgVal/Acre	Value	Acres	Avg Value per Acre	Ann%chg AvgVal/acre	Cmltv%chg AvgVal/Acre
2001						219,694	43,939	5			203,768,098	1,550,650	131		0.00%
2002						437,636	43,765	10	100.00%		228,128,829	1,550,122	147	12.21%	12.21%
2003						435,608	43,560	10	0.00%		239,738,420	1,550,215	155	5.44%	18.32%
2004	436,243	43,624	10	n/a	n/a	0	0		n/a	n/a	295,001,114	1,550,212	190	22.77%	45.27%
2005	432,667	43,266	10	0.00%	n/a	0	0			n/a	287,080,710	1,550,172	185	-2.68%	41.37%
2006	425,475	42,547	10	0.00%	n/a	0	0			n/a	287,345,160	1,549,941	185	0.11%	41.52%
2007	424,372	42,437	10	0.00%	n/a	0	0			n/a	287,592,260	1,549,844	186	0.09%	41.65%
2008	424,007	42,400	10	0.00%	n/a	0	0			n/a	303,906,976	1,548,362	196	5.77%	49.83%
2009	430,393	43,039	10	0.00%	n/a	0	0			n/a	332,225,923	1,548,268	215	9.32%	63.80%
2010	1,686,054	42,151	40	300.00%	n/a	0	0			n/a	402,949,210	1,546,206	261	21.45%	98.94%
2011	1,682,172	42,054	40	0.00%	n/a	0	0			n/a	424,119,562	1,548,227	274	5.12%	109.11%

81
SHERIDAN

FL area 1

Rate Annual %chg Average Value/Acre: 7.66%

(1) Valuations on Abstracts vs CTL will vary due to different reporting dates. (2) Prior to 2003, waste land data was reported with other agland; Beginning 2003 waste land isolated from other agland
Source: 2001 - 2011 Abstracts Agland Assessment Level 1998 to 2006 = 80% ; 2007 & forward = 75% NE Dept. of Revenue Property Assessment Division Prepared as of 03/01/2012

2011 County and Municipal Valuations by Property Type

Pop.	County:	Personal Prop	StateAsd PP	StateAsdReal	Residential	Commercial	Industrial	Recreation	Agland	Agdwell&HS	AgImprv&FS	Minerals	Total Value
5,469	SHERIDAN	25,400,496	11,706,308	42,069,732	78,196,806	23,132,674	0	332,307	423,222,031	42,797,215	14,304,365	0	661,161,934
cnty sectorvalue % of total value:		3.84%	1.77%	6.36%	11.83%	3.50%		0.05%	64.01%	6.47%	2.16%		100.00%
Pop.	Municipality:	Personal Prop	StateAsd PP	StateAsd Real	Residential	Commercial	Industrial	Recreation	Agland	Agdwell&HS	AgImprv&FS	Minerals	Total Value
41	CLINTON	38,248	347	85	777,941	307,255	0	0	0	0	0	0	1,123,876
0.75%	%sector of county sector	0.15%	0.00%	0.00%	0.99%	1.33%							0.17%
	%sector of municipality	3.40%	0.03%	0.01%	69.22%	27.34%							100.00%
1,612	GORDON	1,658,149	1,282,001	96,575	27,781,034	9,790,733	0	0	0	0	0	0	40,608,492
29.48%	%sector of county sector	6.53%	10.95%	0.23%	35.53%	42.32%							6.14%
	%sector of municipality	4.08%	3.16%	0.24%	68.41%	24.11%							100.00%
570	HAY SPRINGS	341,686	222,660	14,392	9,258,542	2,004,942	0	0	0	0	0	0	11,842,222
10.42%	%sector of county sector	1.35%	1.90%	0.03%	11.84%	8.67%							1.79%
	%sector of municipality	2.89%	1.88%	0.12%	78.18%	16.93%							100.00%
890	RUSHVILLE	294,671	338,628	21,265	13,253,497	5,922,013	0	0	56,027	0	0	0	19,886,101
16.27%	%sector of county sector	1.16%	2.89%	0.05%	16.95%	25.60%			0.01%				3.01%
	%sector of municipality	1.48%	1.70%	0.11%	66.65%	29.78%			0.28%				100.00%
3,113	Total Municipalities	2,332,754	1,843,636	132,317	51,071,014	18,024,943	0	0	56,027	0	0	0	73,460,691
56.92%	%all municip.sect of cnty	9.18%	15.75%	0.31%	65.31%	77.92%			0.01%				11.11%

Cnty# 81 County SHERIDAN

Sources: 2011 Certificate of Taxes Levied CTL, 2010 US Census; Dec2010 Municipality Pop. per Research Division FL area 1

Dept. of Revenue Property Assessment Division Prepared as of 03/01/2012