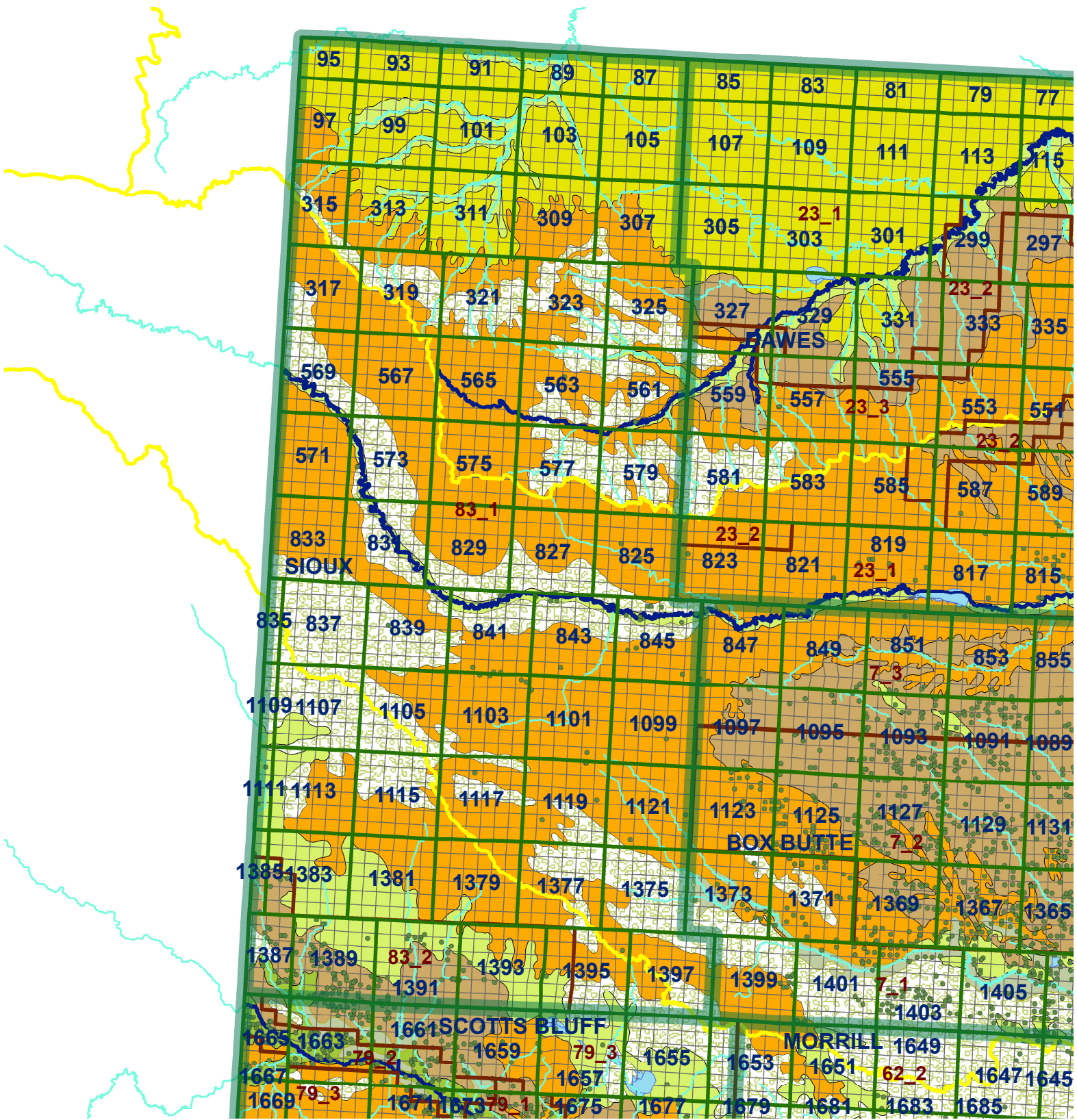


Sioux County

- Legend**
- Market Areas
 - Major Streams
 - River Basin
 - Perennial Streams
 - Moderately well drained silty soils on uplands and in depressions formed in loess
 - Moderately well drained silty soils with clayey subsoils on uplands
 - Well drained silty soils formed in loess on uplands
 - Well drained silty soils formed in loess and alluvium on stream terraces
 - Well to somewhat excessively drained loamy soils formed in weathered sandstone and eolian material on uplands
 - Excessively drained sandy soils formed in alluvium in valleys and eolian sand on uplands in sandhills
 - Excessively drained sandy soils formed in eolian sands on uplands in sandhills
 - Somewhat poorly drained soils formed in alluvium on bottom lands
 - Lakes and Ponds





Legend

- Market Areas
- REGWELLS >500
- Major Streams
- River Basin
- Perennial Streams
- Moderately well drained silty soils on uplands and in depressions formed in loess
- Moderately well drained silty soils with clayey subsoils on uplands
- Well drained silty soils formed in loess on uplands
- Well drained silty soils formed in loess and alluvium on stream terraces
- Well to somewhat excessively drained loamy soils formed in weathered sandstone and eolian material on uplands
- Excessively drained sandy soils formed in alluvium in valleys and eolian sand on uplands in sandhills
- Excessively drained sandy soils formed in eolian sands on uplands in sandhills
- Somewhat poorly drained soils formed in alluvium on bottom lands
- Lakes and Ponds

Sioux County

