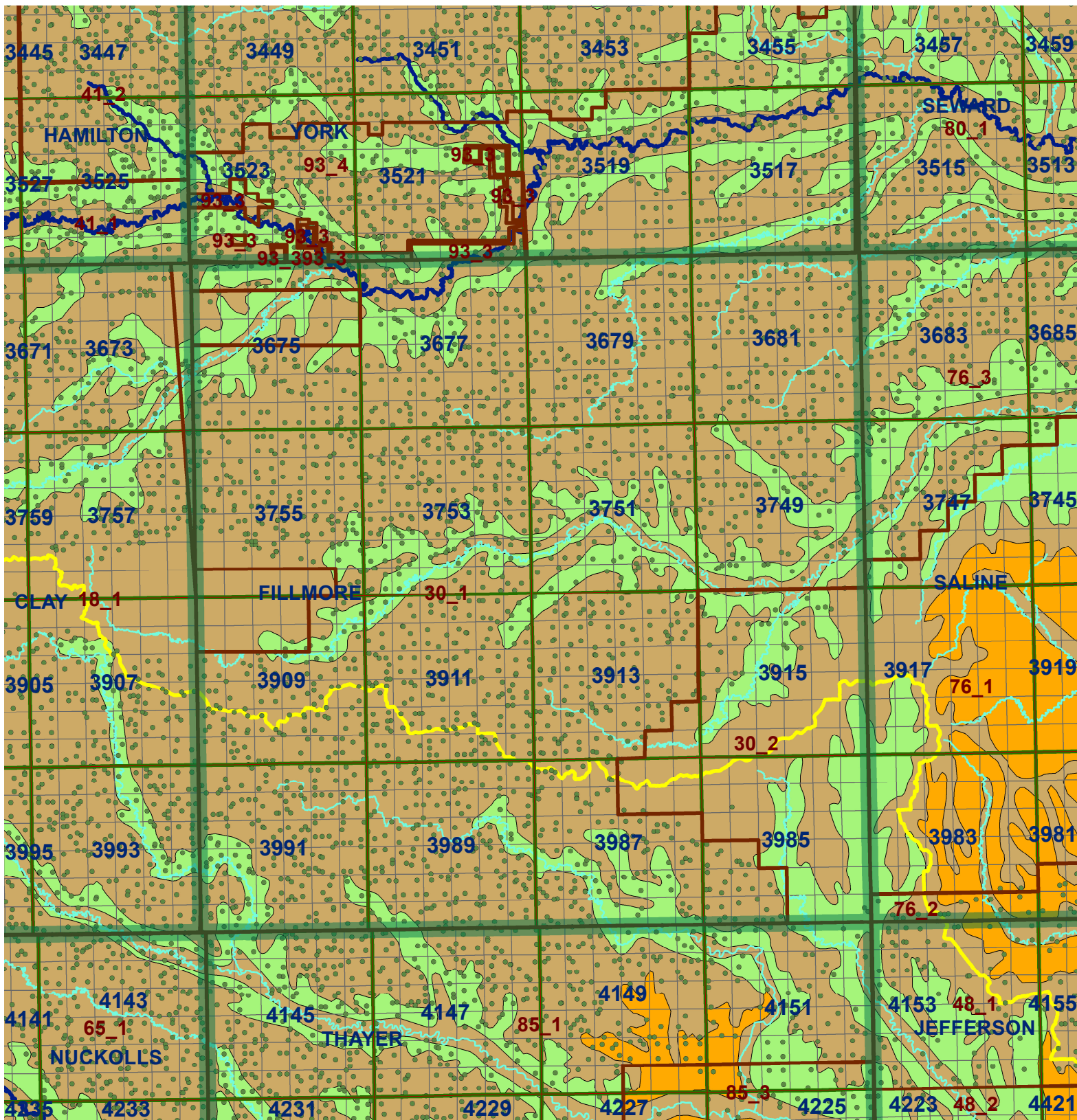


Legend

- Market Areas
- Major Streams
- Perennial Streams
- River Basin
- Moderately well drained silty soils on uplands and in depressions formed in loess
- Moderately well drained silty soils with clayey subsoils on uplands
- Well drained silty soils formed in loess on uplands
- Well drained silty soils formed in loess and alluvium on stream terraces
- Well to somewhat excessively drained loamy soils formed in weathered sandstone and eolian material on uplands
- Excessively drained sandy soils formed in alluvium in valleys and eolian sand on uplands in sandhills
- Excessively drained sandy soils formed in eolian sands on uplands in sandhills
- Somewhat poorly drained soils formed in alluvium on bottom lands
- Lakes and Ponds

Fillmore County





Legend

- Market Areas
- Major Streams
- Perennial Streams
- River Basin
- Moderately well drained silty soils on uplands and in depressions formed in loess
- Moderately well drained silty soils with clayey subsoils on uplands
- Well drained silty soils formed in loess on uplands
- Well drained silty soils formed in loess and alluvium on stream terraces
- Well to somewhat excessively drained loamy soils formed in weathered sandstone and eolian material on uplands
- Excessively drained sandy soils formed in alluvium in valleys and eolian sand on uplands in sandhills
- Excessively drained sandy soils formed in eolian sands on uplands in sandhills
- Somewhat poorly drained soils formed in alluvium on bottom lands
- Lakes and Ponds

Fillmore County

