










Legend

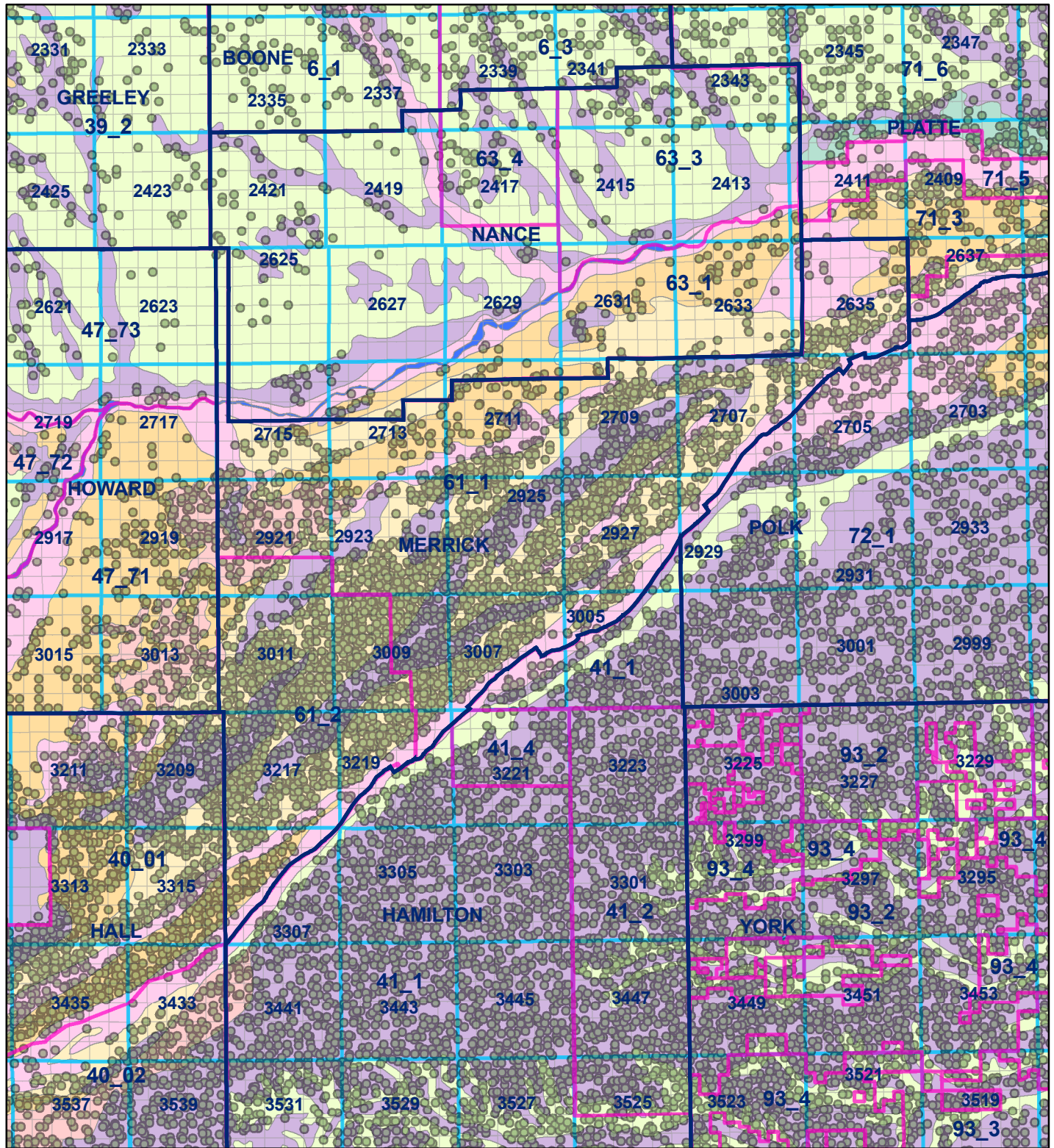
-  County Line
-  Market Areas
-  Geo Codes
-  Sections

Soil Classes

-  Lakes and Ponds
-  Excessively drained sandy soils formed in alluvium in valleys and eolian sand on uplands in sandhills
-  Excessively drained sandy soils formed in eolian sands on uplands in sandhills
-  Moderately well drained silty soils on uplands and in depressions formed in loess
-  Well drained silty soils formed in loess on uplands
-  Well drained silty soils formed in loess and alluvium on stream terraces
-  Well to somewhat excessively drained loamy soils formed in weathered sandstone and eolian material on uplands
-  Somewhat poorly drained soils formed in alluvium on bottom lands
-  Moderately well drained silty soils with clayey subsoils on uplands

Merrick County





Legend

- County Line
- Market Areas
- Registered Wells > 500 GPM
- Geo Codes
- Sections

Soil Classes

- Lakes and Ponds
- Excessively drained sandy soils formed in alluvium in valleys and eolian sand on uplands in sandhills
- Excessively drained sandy soils formed in eolian sands on uplands in sandhills
- Moderately well drained silty soils on uplands and in depressions formed in loess
- Well drained silty soils formed in loess on uplands
- Well drained silty soils formed in loess and alluvium on stream terraces
- Well to somewhat excessively drained loamy soils formed in weathered sandstone and eolian material on uplands
- Somewhat poorly drained soils formed in alluvium on bottom lands
- Moderately well drained silty soils with clayey subsoils on uplands

Merrick County

