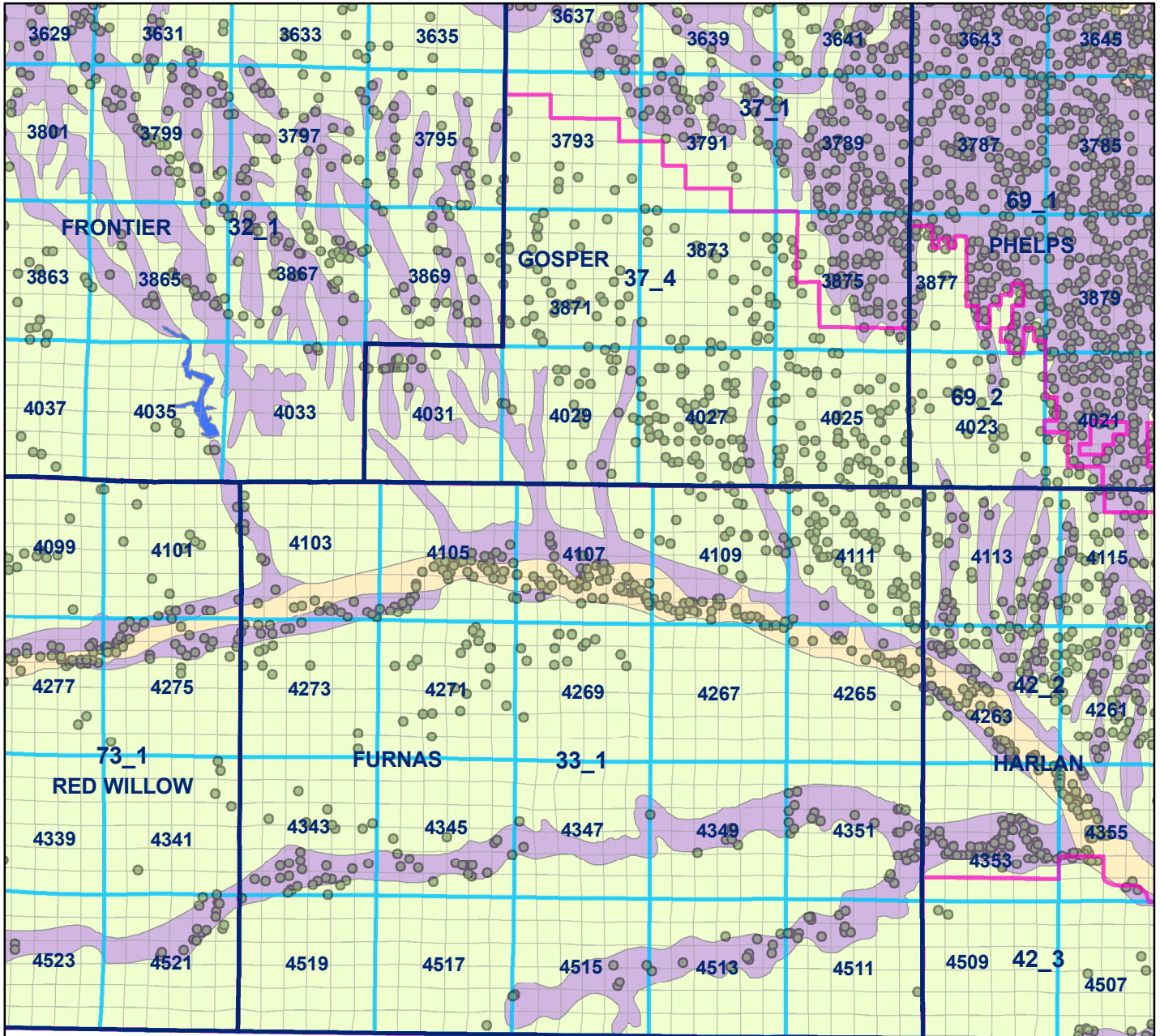


- Legend**
- County Line
  - Geo Codes
  - Sections
  - Market Areas

- Soil Classes**
- Lakes and Ponds
  - Excessively drained sandy soils formed in alluvium in valleys and eolian sand on uplands in sandhills
  - Excessively drained sandy soils formed in eolian sands on uplands in sandhills
  - Moderately well drained silty soils on uplands and in depressions formed in loess
  - Well drained silty soils formed in loess on uplands
  - Well drained silty soils formed in loess and alluvium on stream terraces
  - Well to somewhat excessively drained loamy soils formed in weathered sandstone and eolian material on uplands
  - Somewhat poorly drained soils formed in alluvium on bottom lands
  - Moderately well drained silty soils with clayey subsoils on uplands

# Furnas County





**Legend**

- County Line
- Registered Wells > 500 GPM
- Geo Codes
- Sections
- Market Areas

**Soil Classes**

- Lakes and Ponds
- Excessively drained sandy soils formed in alluvium in valleys and eolian sand on uplands in sandhills
- Excessively drained sandy soils formed in eolian sands on uplands in sandhills
- Moderately well drained silty soils on uplands and in depressions formed in loess
- Well drained silty soils formed in loess on uplands
- Well drained silty soils formed in loess and alluvium on stream terraces
- Well to somewhat excessively drained loamy soils formed in weathered sandstone and eolian material on uplands
- Somewhat poorly drained soils formed in alluvium on bottom lands
- Moderately well drained silty soils with clayey subsoils on uplands



# Furnas County