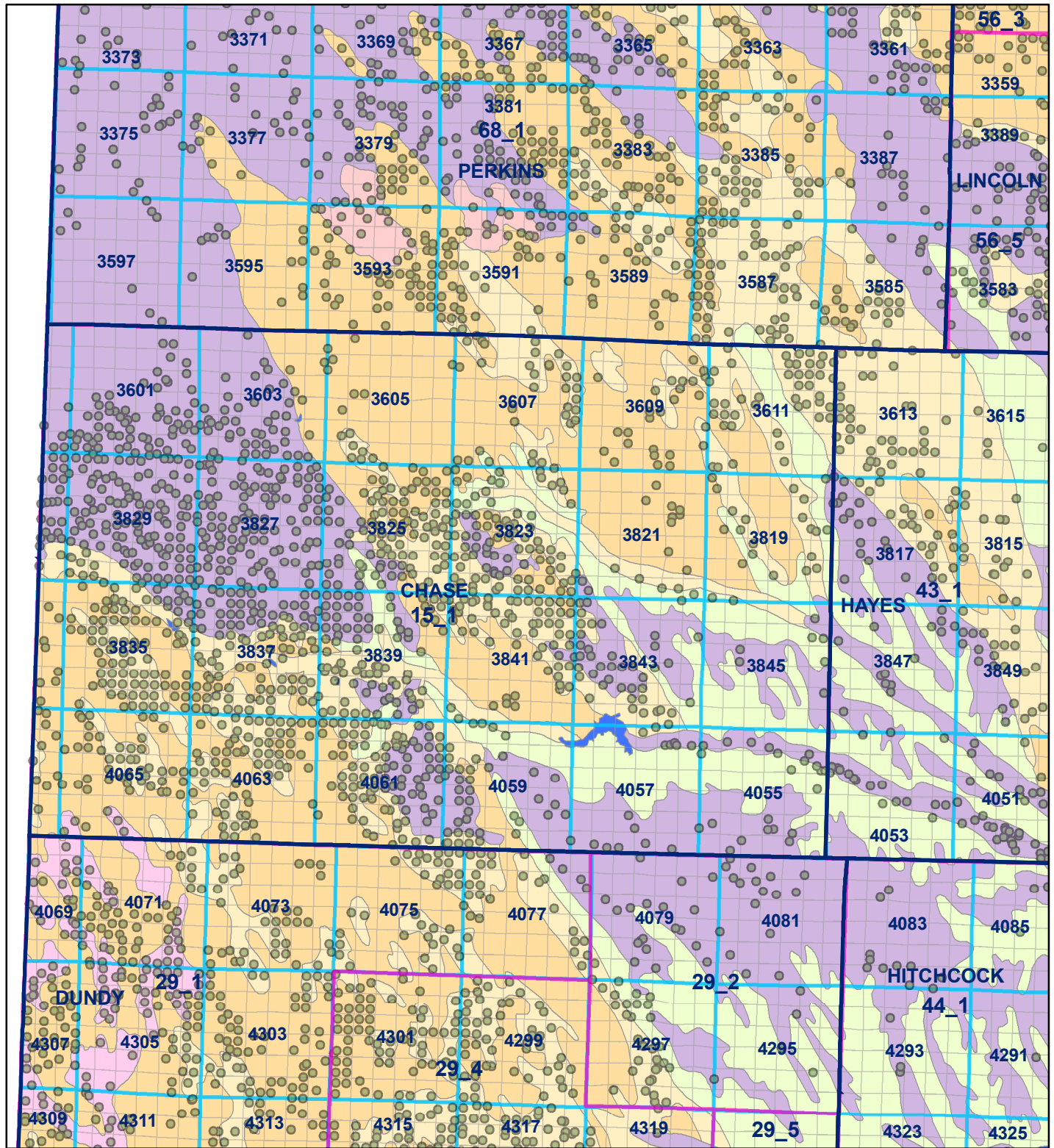


- Legend**
- County Line
 - Geo Codes
 - Sections
 - Market Areas

- Soil Classes**
- Lakes and Ponds
 - Excessively drained sandy soils formed in alluvium in valleys and eolian sand on uplands in sandhills
 - Excessively drained sandy soils formed in eolian sands on uplands in sandhills
 - Moderately well drained silty soils on uplands and in depressions formed in loess
 - Well drained silty soils formed in loess on uplands
 - Well drained silty soils formed in loess and alluvium on stream terraces
 - Well to somewhat excessively drained loamy soils formed in weathered sandstone and eolian material on uplands
 - Somewhat poorly drained soils formed in alluvium on bottom lands
 - Moderately well drained silty soils with clayey subsoils on uplands

Chase County





Legend

- County Line
- Registered Wells > 500 GPM
- Geo Codes
- Sections
- Market Areas

Soil Classes

- Lakes and Ponds
- Excessively drained sandy soils formed in alluvium in valleys and eolian sand on uplands in sandhills
- Excessively drained sandy soils formed in eolian sands on uplands in sandhills
- Moderately well drained silty soils on uplands and in depressions formed in loess
- Well drained silty soils formed in loess on uplands
- Well drained silty soils formed in loess and alluvium on stream terraces
- Well to somewhat excessively drained loamy soils formed in weathered sandstone and eolian material on uplands
- Somewhat poorly drained soils formed in alluvium on bottom lands
- Moderately well drained silty soils with clayey subsoils on uplands

Chase County

