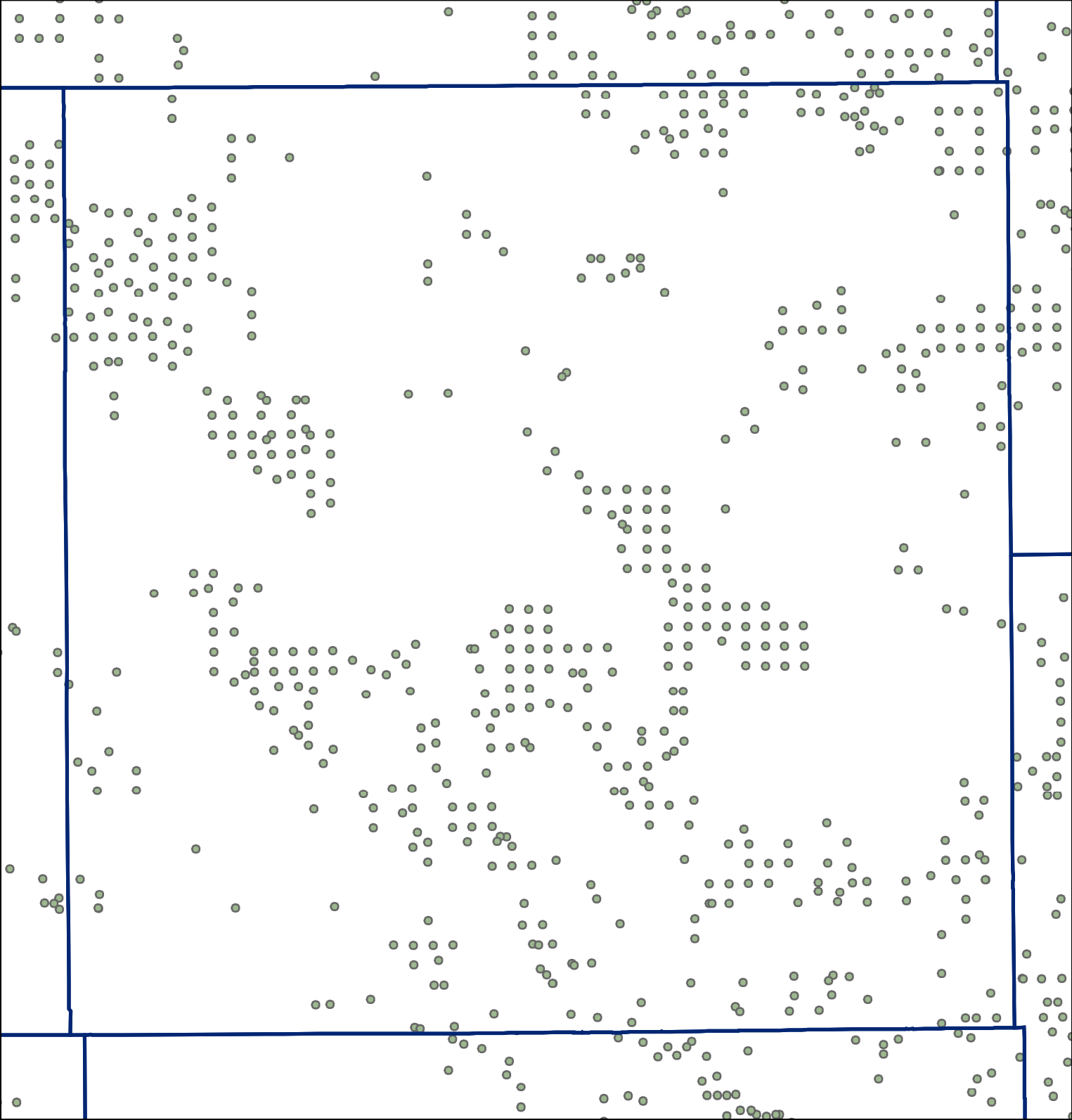
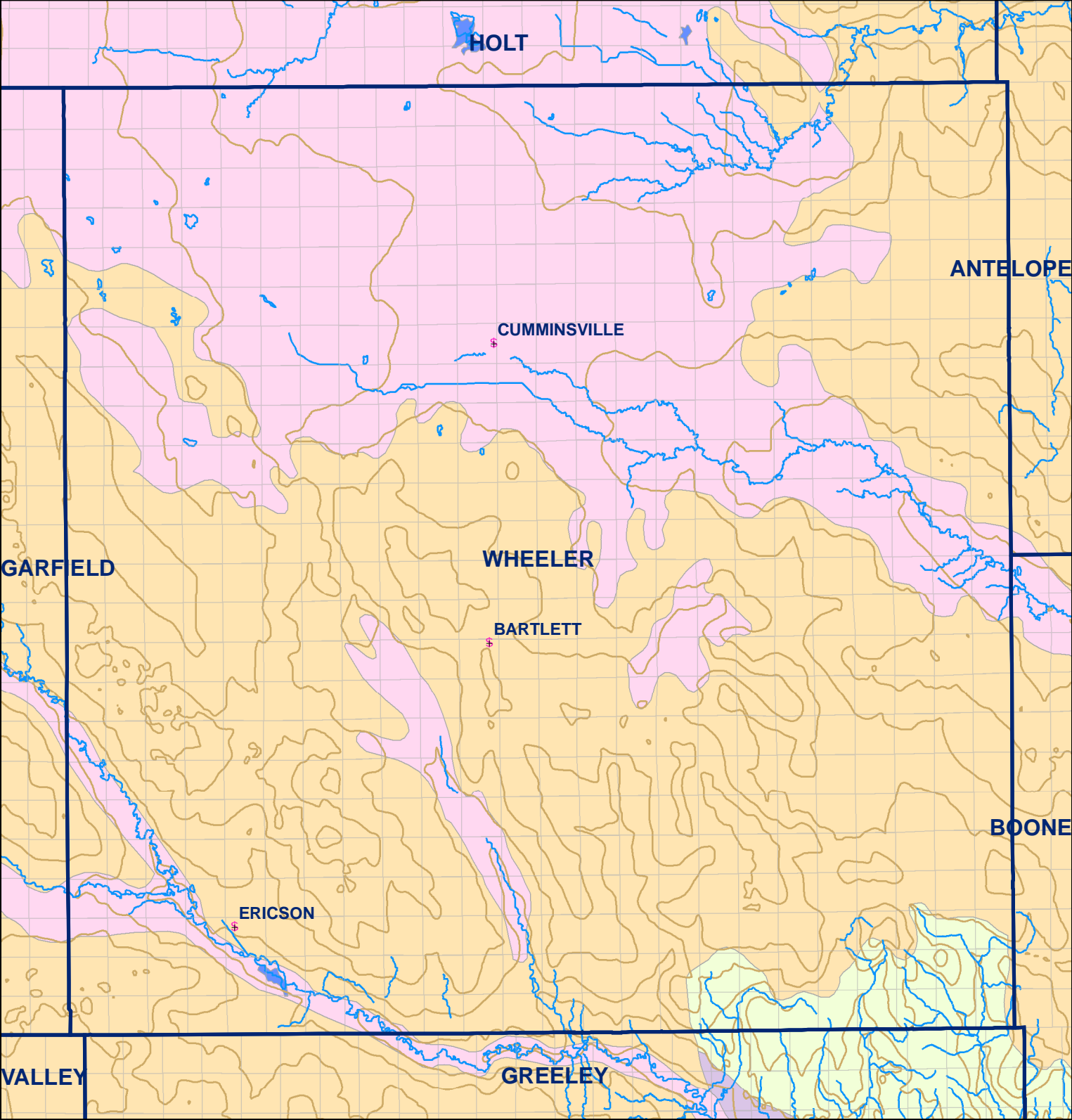


Market Areas



● Registered Wells > 500 GPM

| | | | | | |
|------|------|------|------|------|------|
| 1295 | 1293 | 1291 | 1289 | 1287 | 1285 |
| 1477 | 1479 | 1481 | 1483 | 1485 | 1487 |
| 1575 | 1573 | 1571 | 1569 | 1567 | 1565 |
| 1757 | 1759 | 1761 | 1763 | 1765 | 1767 |
| 1859 | 1857 | 1855 | 1853 | 1851 | 1849 |
| 2041 | 2043 | 2045 | 2047 | 2049 | 2051 |



- Legend**
- Towns
 - Sections
 - Rivers and Streams
 - Topography
- Soil Classes**
- Lakes and Ponds
 - Excessively drained sandy soils formed in alluvium in valleys and eolian sand on uplands in sandhills
 - Excessively drained sandy soils formed in eolian sands on uplands in sandhills
 - Moderately well drained silty soils on uplands and in depressions formed in loess
 - Well drained silty soils formed in loess on uplands
 - Well drained silty soils formed in loess and alluvium on stream terraces
 - Well to somewhat excessively drained loamy soils formed in weathered sandstone and eolian material on uplands
 - Somewhat poorly drained soils formed in alluvium on bottom lands
 - Moderately well drained silty soils with clayey subsoils on uplands