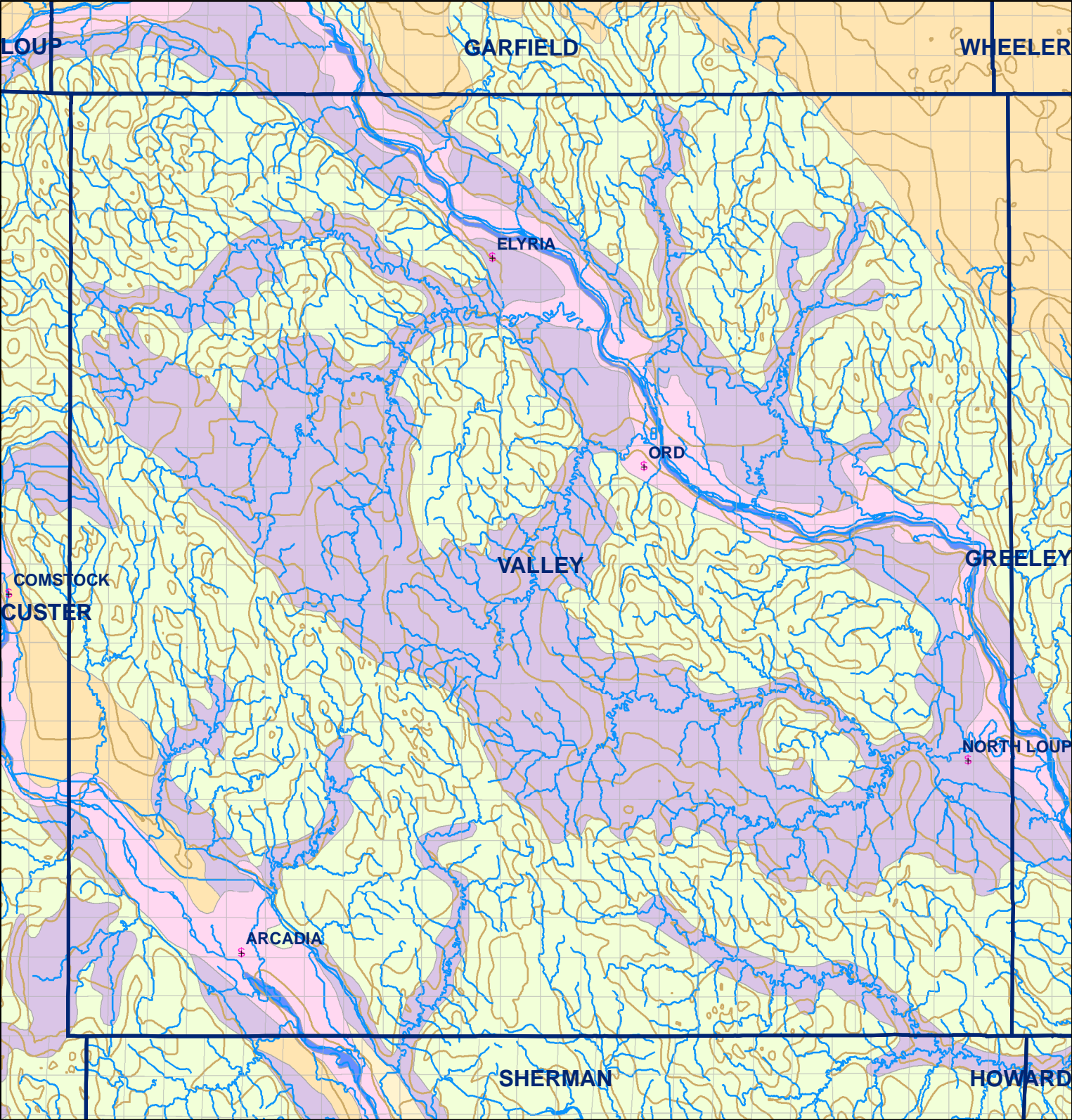


● Registered Wells > 500 GPM

|      |      |      |      |      |      |
|------|------|------|------|------|------|
| 1867 | 1865 | 1863 | 1861 | 1859 | 1857 |
| 2033 | 2035 | 2037 | 2039 | 2041 | 2043 |
| 2151 | 2149 | 2147 | 2145 | 2143 | 2141 |
| 2317 | 2319 | 2321 | 2323 | 2325 | 2327 |
| 2439 | 2437 | 2435 | 2433 | 2431 | 2429 |
| 2607 | 2609 | 2611 | 2613 | 2615 | 2617 |



Legend

+

Towns

□

Sections

—

Rivers and Streams

—

Topography

Soil Classes

■

Lakes and Ponds

■

Excessively drained sandy soils formed in alluvium in valleys and eolian sand on uplands in sandhills

■

Excessively drained sandy soils formed in eolian sands on uplands in sandhills

■

Moderately well drained silty soils on uplands and in depressions formed in loess

■

Well drained silty soils formed in loess on uplands

■

Well drained silty soils formed in loess and alluvium on stream terraces

■

Well to somewhat excessively drained loamy soils formed in weathered sandstone and eolian material on uplands

■

Somewhat poorly drained soils formed in alluvium on bottom lands

■

Moderately well drained silty soils with clayey subsoils on uplands