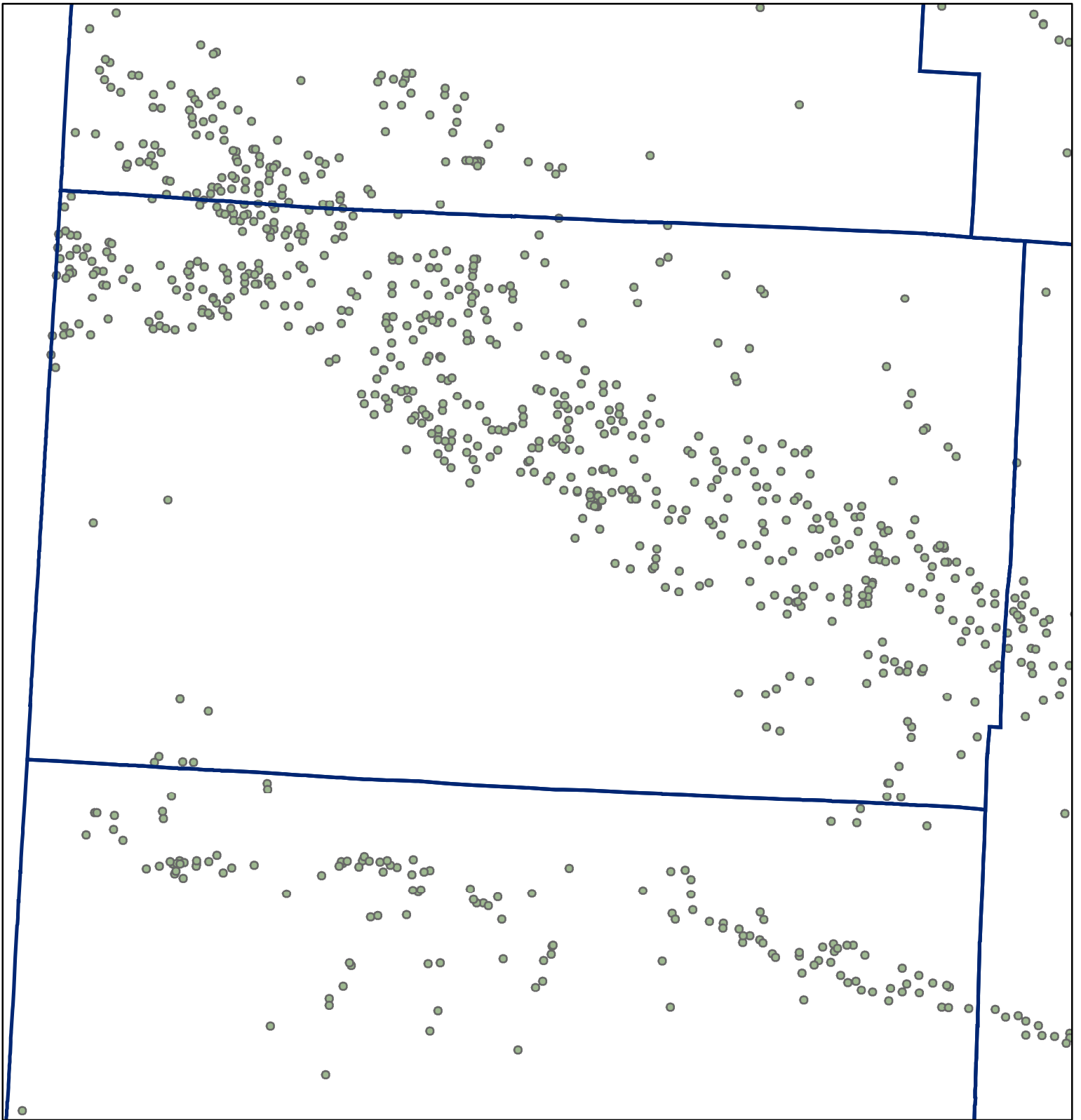
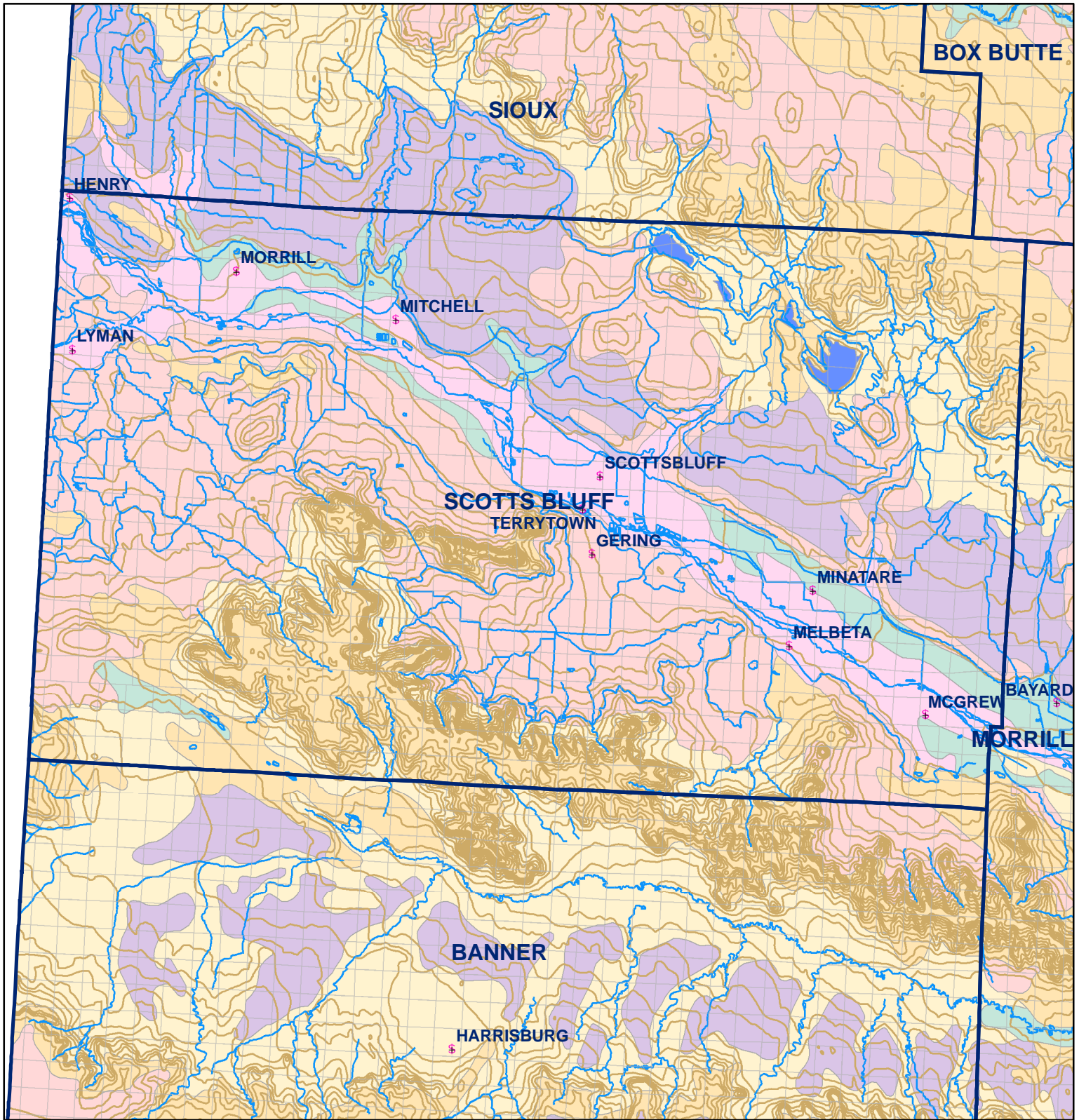


 Market Areas



● Registered Wells > 500 GPM

	1383	1381	1379	1377	1375	1373
1387	1389	1391	1393	1395	1397	1399
1665	1663	1661	1659	1657	1655	1653
1667	1669	1671	1673	1675	1677	1679
1949	1947	1945	1943	1941	1939	1937
1951	1953	1955	1957	1959	1961	1963
2233	2231	2229	2227	2225	2223	2221
2235	2237	2239	2241	2243	2245	2247



Legend

- + Towns
- Sections
- Rivers and Streams
- Topography

Soil Classes

- Lakes and Ponds
- Excessively drained sandy soils formed in alluvium in valleys and eolian sand on uplands in sandhills
- Excessively drained sandy soils formed in eolian sands on uplands in sandhills
- Moderately well drained silty soils on uplands and in depressions formed in loess
- Well drained silty soils formed in loess on uplands
- Well drained silty soils formed in loess and alluvium on stream terraces
- Well to somewhat excessively drained loamy soils formed in weathered sandstone and eolian material on uplands
- Somewhat poorly drained soils formed in alluvium on bottom lands
- Moderately well drained silty soils with clayey subsoils on uplands

Scotts Bluff County