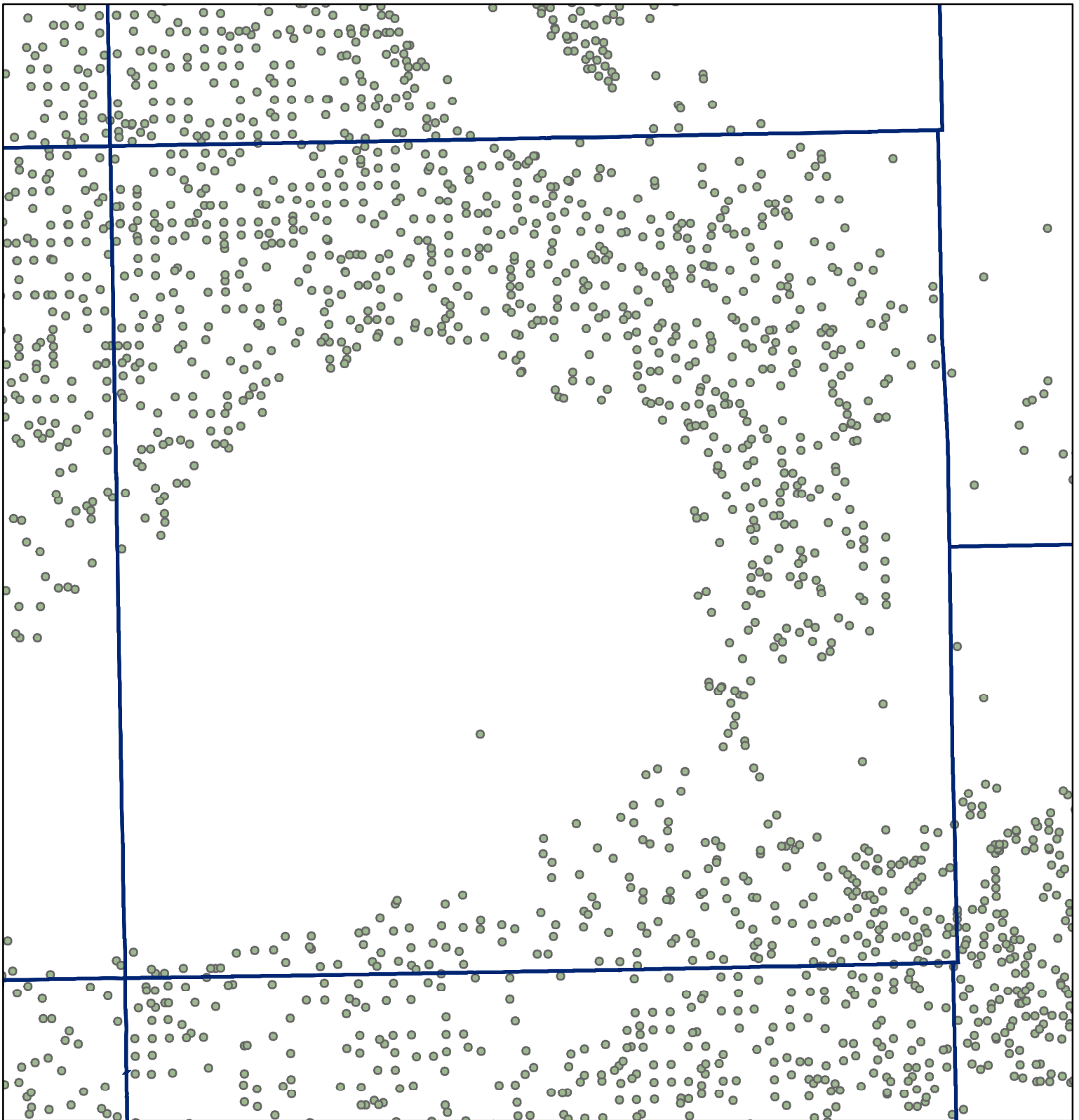


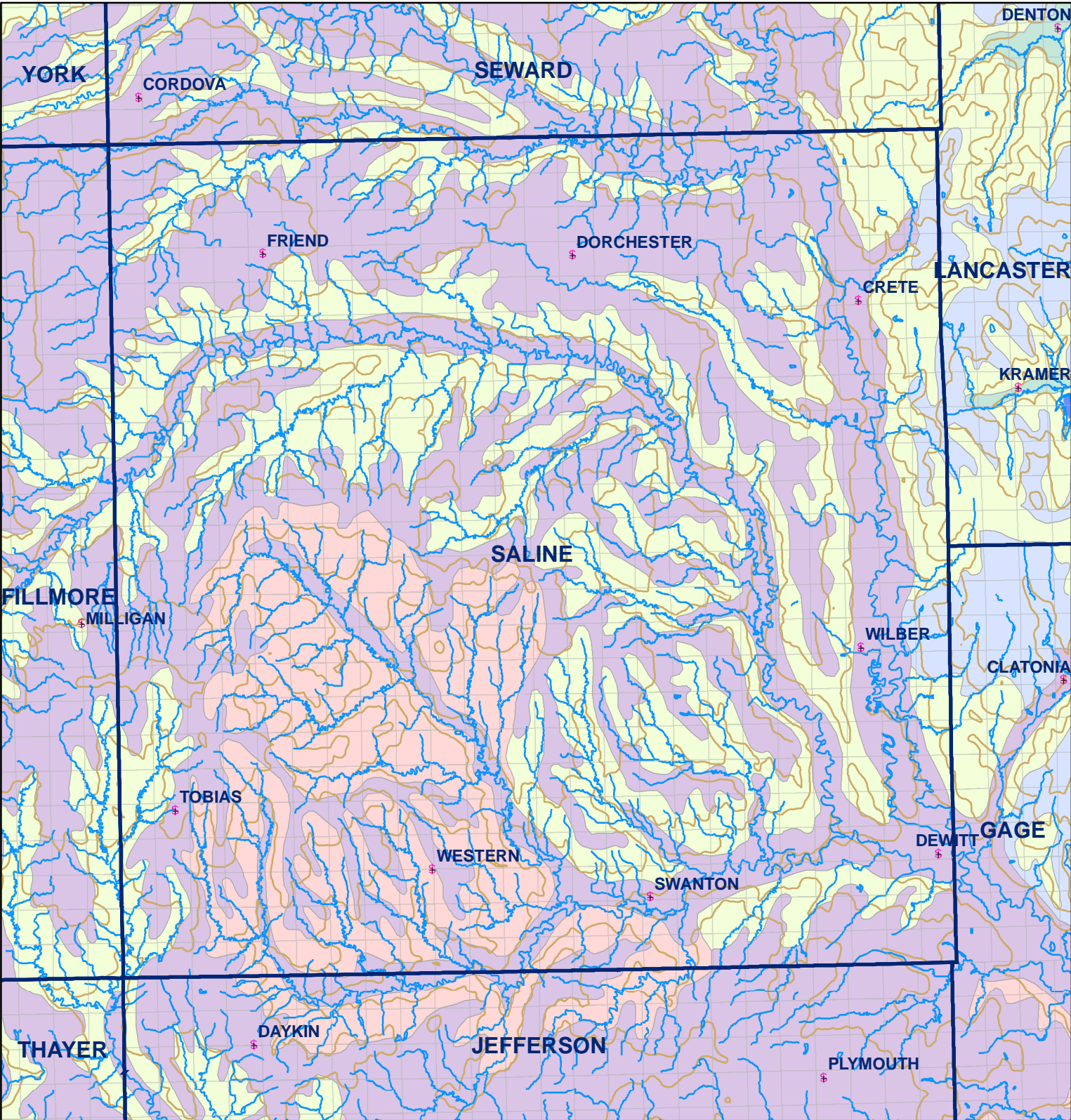


Exhibit 76 A - page 1



● Registered Wells > 500 GPM

|      |      |      |      |      |      |
|------|------|------|------|------|------|
| 3517 | 3515 | 3513 | 3511 | 3509 | 3507 |
| 3681 | 3683 | 3685 | 3687 | 3689 | 3691 |
| 3749 | 3747 | 3745 | 3743 | 3741 | 3739 |
| 3915 | 3917 | 3919 | 3921 | 3923 | 3925 |
| 3985 | 3983 | 3981 | 3979 | 3977 | 3975 |
| 4151 | 4153 | 4155 | 4157 | 4159 | 4161 |



**Legend**

- Towns
- Sections
- Rivers and Streams
- Topography

**Soil Classes**

- Lakes and Ponds
- Excessively drained sandy soils formed in alluvium in valleys and eolian sand on uplands in sandhills
- Excessively drained sandy soils formed in eolian sands on uplands in sandhills
- Moderately well drained silty soils on uplands and in depressions formed in loess
- Well drained silty soils formed in loess on uplands
- Well drained silty soils formed in loess and alluvium on stream terraces
- Well to somewhat excessively drained loamy soils formed in weathered sandstone and eolian material on uplands
- Somewhat poorly drained soils formed in alluvium on bottom lands
- Moderately well drained silty soils with clayey subsoils on uplands