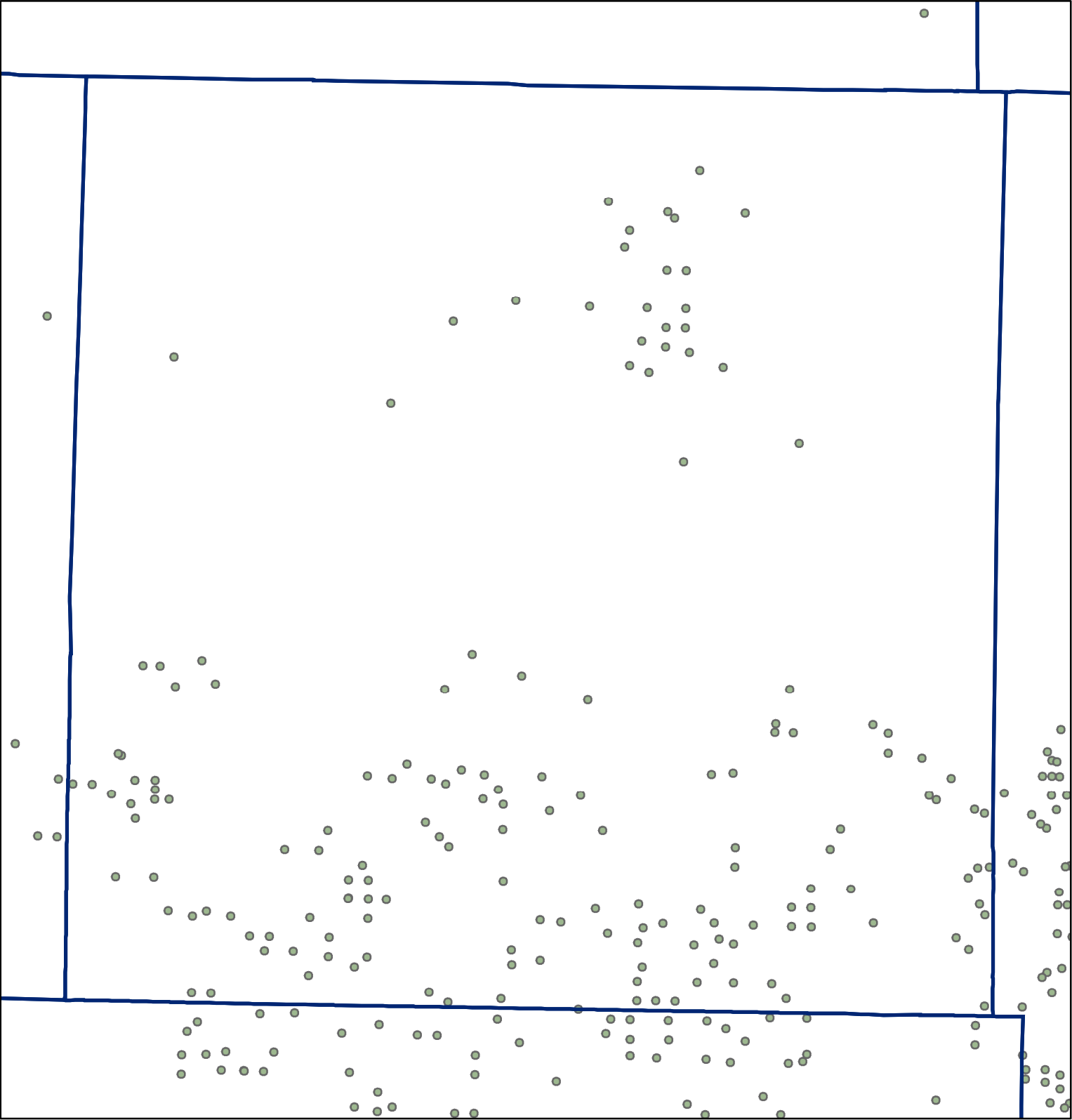
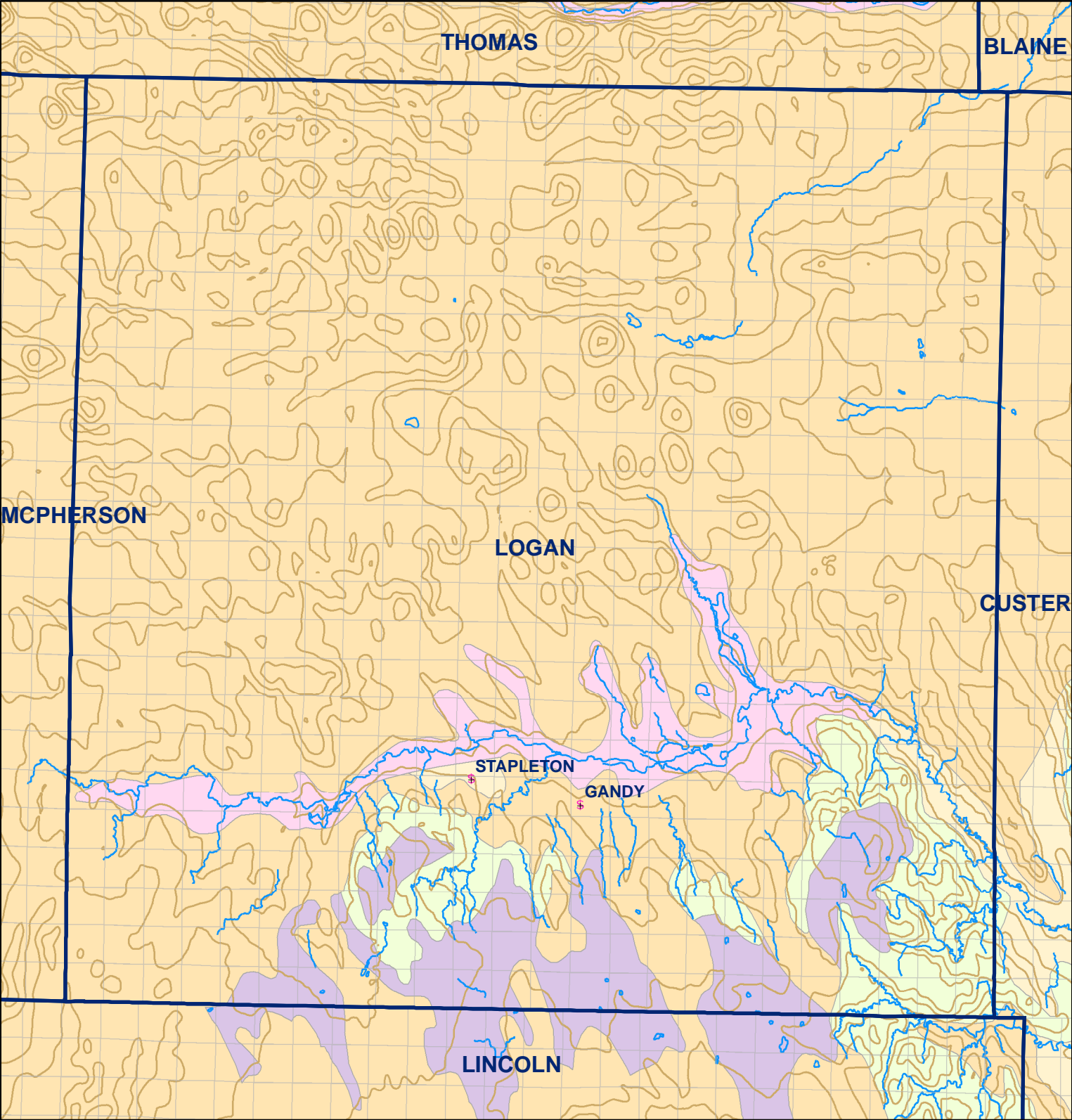


 Market Areas



● Registered Wells > 500 GPM

1893	1891	1889	1887	1885	1883
2007	2009	2011	2013	2015	2017
2177	2175	2173	2171	2169	2167
2291	2293	2295	2297	2299	2301
2465	2463	2461	2459	2457	2455
2581	2583	2585	2587	2589	2591



Legend

- Towns
- Sections
- Rivers and Streams
- Topography

Soil Classes

- Lakes and Ponds
- Excessively drained sandy soils formed in alluvium in valleys and eolian sand on uplands in sandhills
- Excessively drained sandy soils formed in eolian sands on uplands in sandhills
- Moderately well drained silty soils on uplands and in depressions formed in loess
- Well drained silty soils formed in loess on uplands
- Well drained silty soils formed in loess and alluvium on stream terraces
- Well to somewhat excessively drained loamy soils formed in weathered sandstone and eolian material on uplands
- Somewhat poorly drained soils formed in alluvium on bottom lands
- Moderately well drained silty soils with clayey subsoils on uplands

Logan County