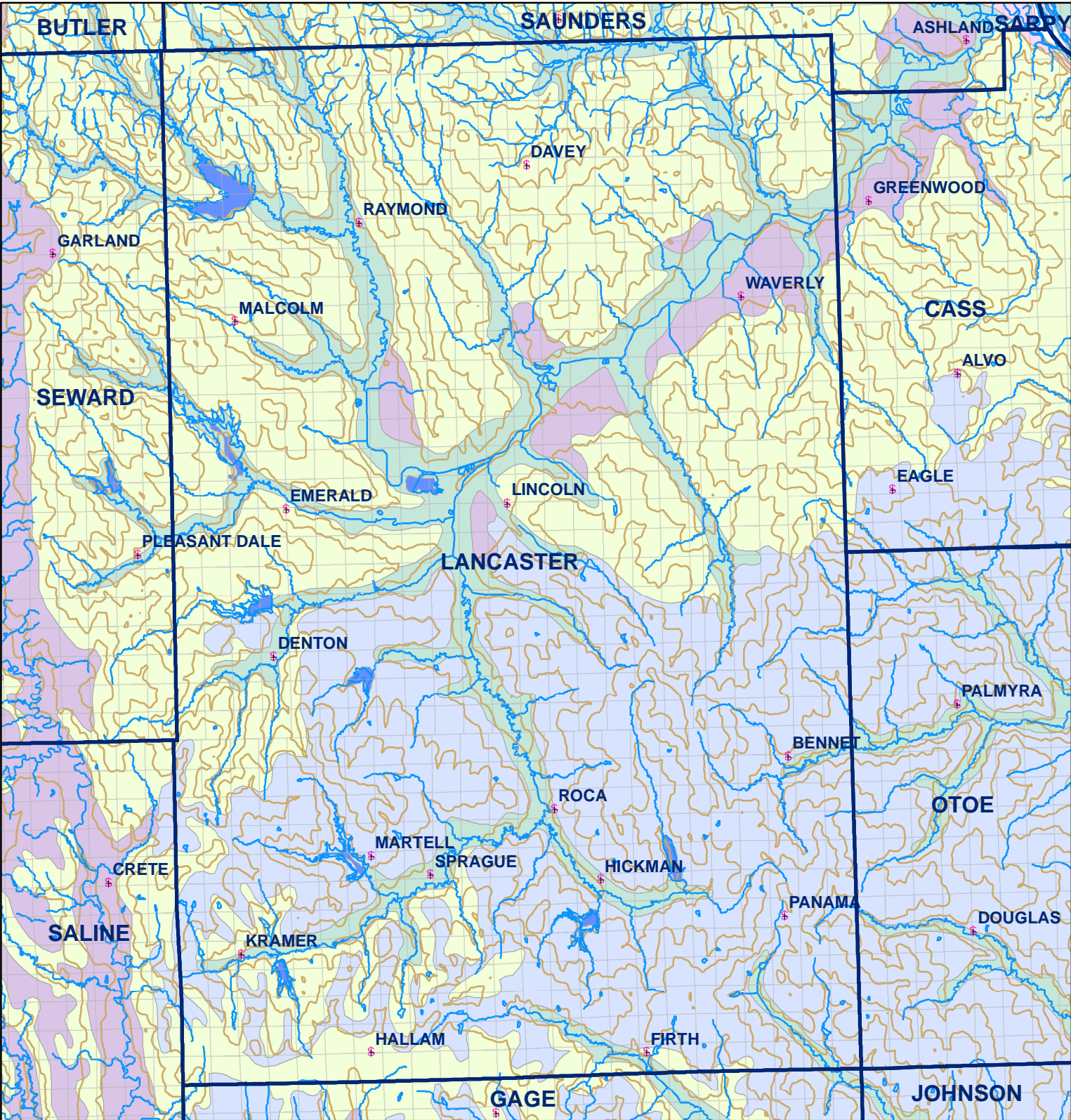


● Registered Wells > 500 GPM

2989	2987	2985	2983	2981	2979	2977
3239	3241	3243	3245	3247	3249	3251
3285	3283	3281	3279	3277	3275	3273
3463	3465	3467	3469	3471	3473	3475
3509	3507	3505	3503	3501	3499	3497
3689	3691	3693	3695	3697	3699	3701
3741	3739	3737	3735	3733	3731	3729
3923	3925	3927	3929	3931	3933	



**Legend**

- Towns
- Sections
- Rivers and Streams
- Topography

**Soil Classes**

- Lakes and Ponds
- Excessively drained sandy soils formed in alluvium in valleys and eolian sand on uplands in sandhills
- Excessively drained sandy soils formed in eolian sands on uplands in sandhills
- Moderately well drained silty soils on uplands and in depressions formed in loess
- Well drained silty soils formed in loess on uplands
- Well drained silty soils formed in loess and alluvium on stream terraces
- Well to somewhat excessively drained loamy soils formed in weathered sandstone and eolian material on uplands
- Somewhat poorly drained soils formed in alluvium on bottom lands
- Moderately well drained silty soils with clayey subsoils on uplands