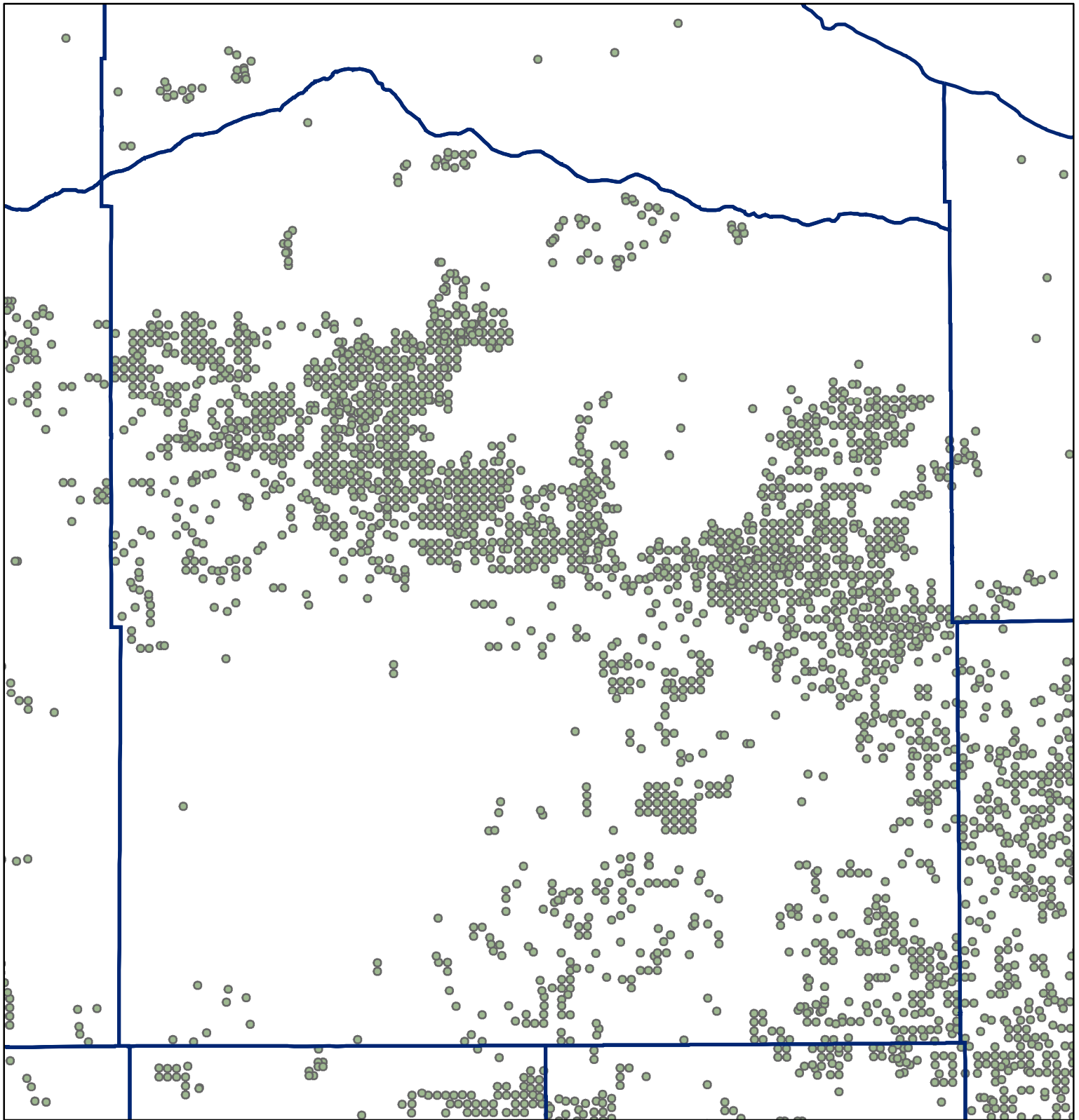
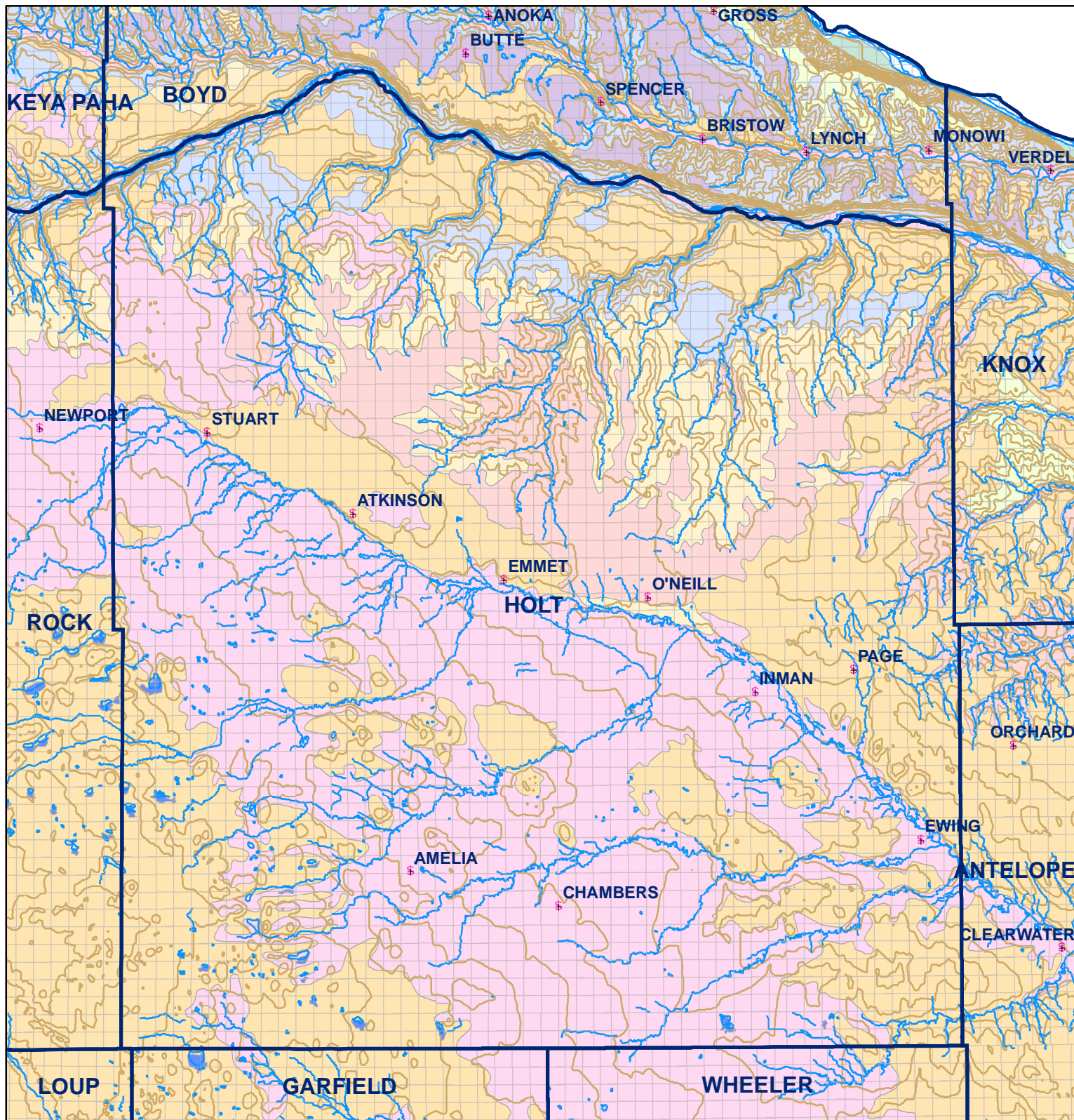


Market Areas



● Registered Wells > 500 GPM

177	179	181	183	185	187	189	191	193	
235	233	231	229	227	225	223	221	219	217
397	399	401	403	405	407	409	411	413	415
489	487	485	483	481	479	477	475	473	471
651	653	655	657	659	661	663	665	667	669
753	751	749	747	745	743	741	739	737	735
917	919	921	923	925	927	929	931	933	935
1027	1025	1023	1021	1019	1017	1015	1013	1011	1009
1193	1195	1197	1199	1201	1203	1205	1207	1209	1211
1303	1301	1299	1297	1295	1293	1291	1289	1287	1285
1469	1471	1473	1475	1477	1479	1481	1483	1485	1487



Legend

- + Towns
- Sections
- Rivers and Streams
- Topography

Soil Classes

- Lakes and Ponds
- Excessively drained sandy soils formed in alluvium in valleys and eolian sand on uplands in sandhills
- Excessively drained sandy soils formed in eolian sands on uplands in sandhills
- Moderately well drained silty soils on uplands and in depressions formed in loess
- Well drained silty soils formed in loess on uplands
- Well drained silty soils formed in loess and alluvium on stream terraces
- Well to somewhat excessively drained loamy soils formed in weathered sandstone and eolian material on uplands
- Somewhat poorly drained soils formed in alluvium on bottom lands
- Moderately well drained silty soils with clayey subsoils on uplands

Holt County