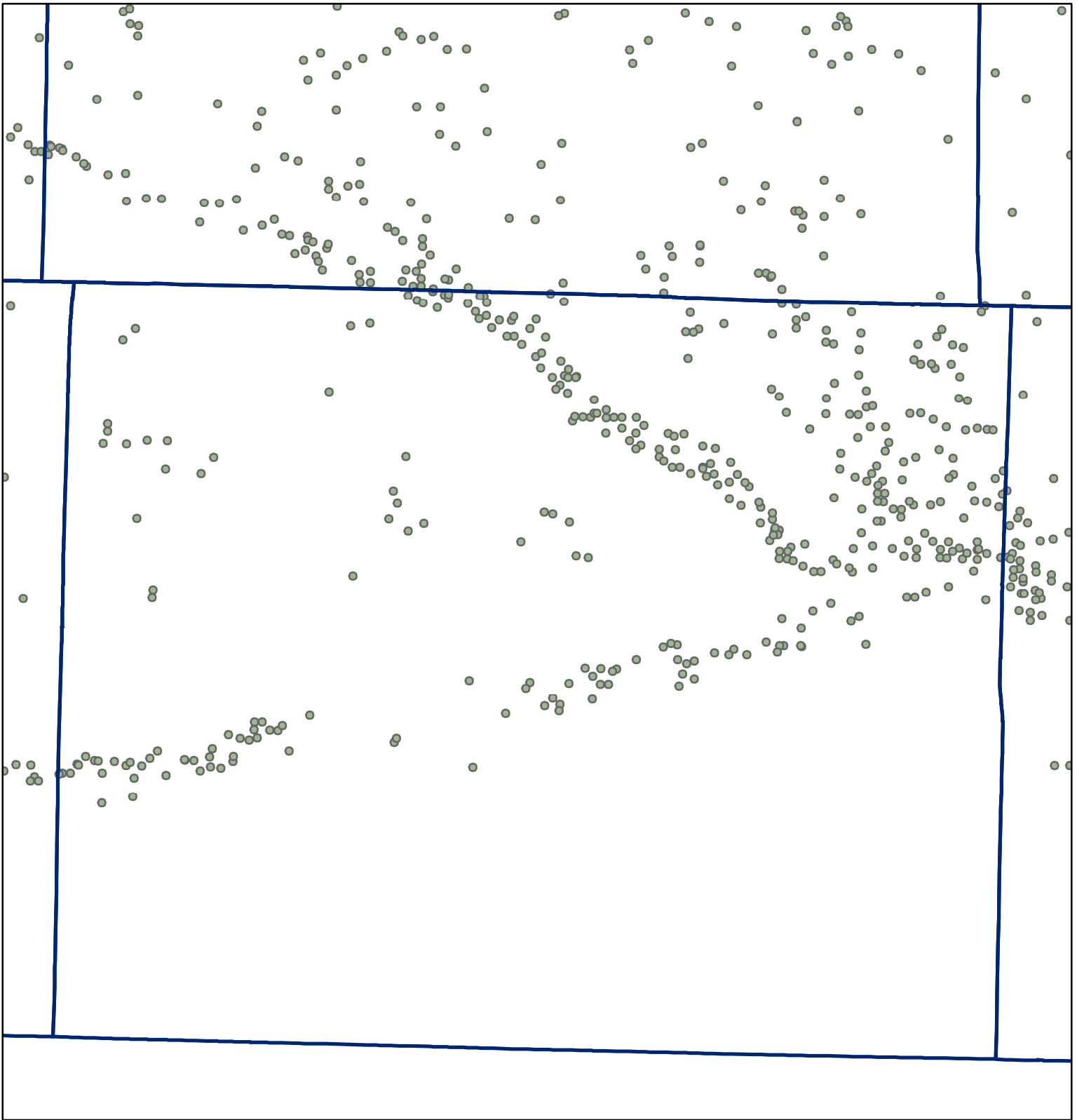
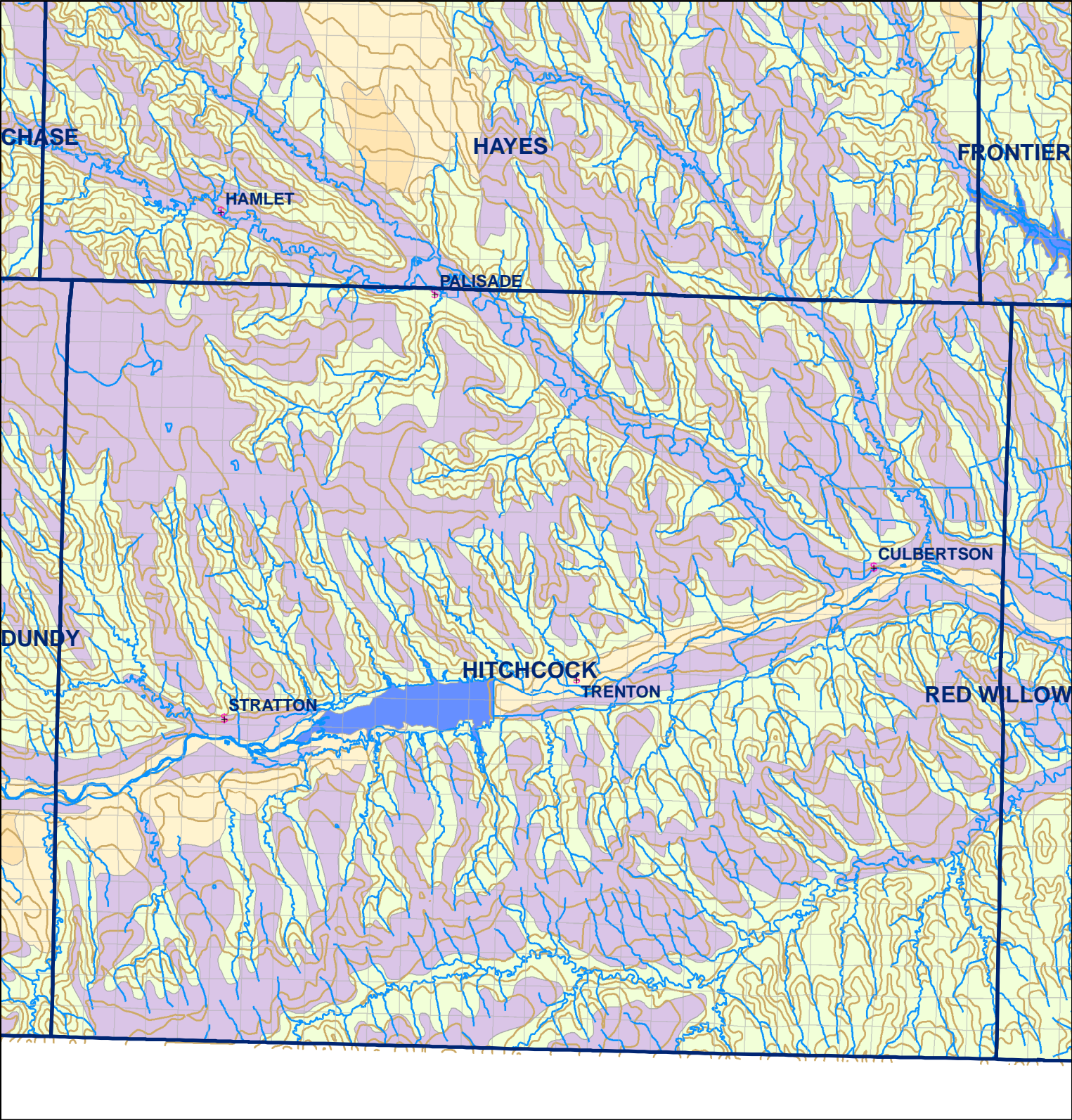


Market Areas



● Registered Wells > 500 GPM

3845	3847	3849	3851	3853	3855	3857
4055	4053	4051	4049	4047	4045	4043
4081	4083	4085	4087	4089	4091	4093
4295	4293	4291	4289	4287	4285	4283
4321	4323	4325	4327	4329	4331	4333
4541	4539	4537	4535	4533	4531	4529



Legend

§

Towns

□

Sections

Rivers and Streams

Topography

Soil Classes

Lakes and Ponds

Excessively drained sandy soils formed in alluvium in valleys and eolian sand on uplands in sandhills

Excessively drained sandy soils formed in eolian sands on uplands in sandhills

Moderately well drained silty soils on uplands and in depressions formed in loess

Well drained silty soils formed in loess on uplands

Well drained silty soils formed in loess and alluvium on stream terraces

Well to somewhat excessively drained loamy soils formed in weathered sandstone and eolian material on uplands

Somewhat poorly drained soils formed in alluvium on bottom lands

Moderately well drained silty soils with clayey subsoils on uplands

Hitchcock County

Exhibit 44 A - page 4