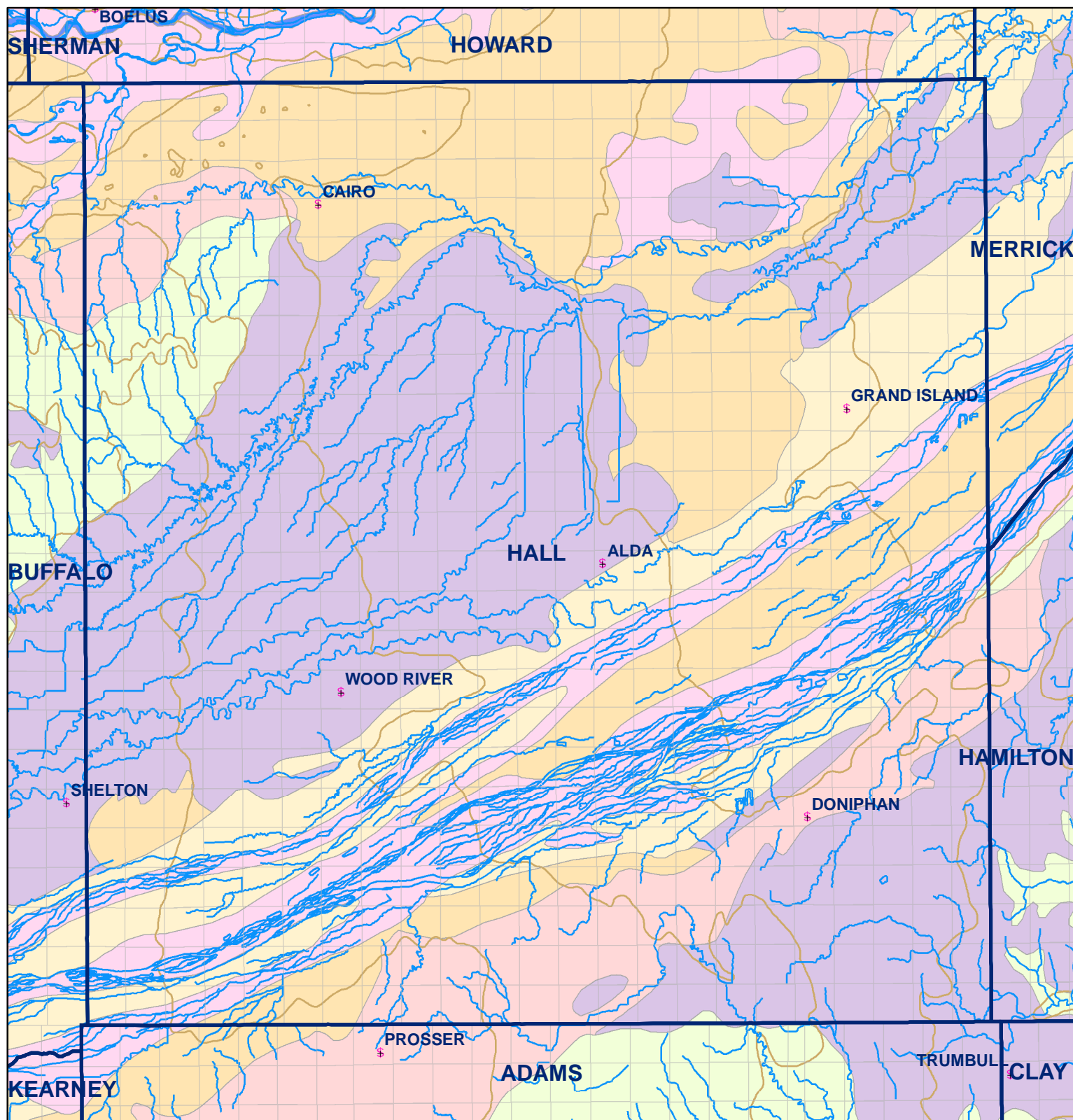


● Registered Wells > 500 GPM

	3019	3017	3015	3013	3011
3207	3209	3211	3213	3215	3217
3317	3315	3313	3311	3309	3307
3431	3433	3435	3437	3439	3441
3541	3539	3537	3535	3533	3531
3657	3659	3661	3663	3665	3667



Legend

- + Towns
- Sections
- Rivers and Streams
- Topography

Soil Classes

- Lakes and Ponds
- Excessively drained sandy soils formed in alluvium in valleys and eolian sand on uplands in sandhills
- Excessively drained sandy soils formed in eolian sands on uplands in sandhills
- Moderately well drained silty soils on uplands and in depressions formed in loess
- Well drained silty soils formed in loess on uplands
- Well drained silty soils formed in loess and alluvium on stream terraces
- Well to somewhat excessively drained loamy soils formed in weathered sandstone and eolian material on uplands
- Somewhat poorly drained soils formed in alluvium on bottom lands
- Moderately well drained silty soils with clayey subsoils on uplands

Hall County