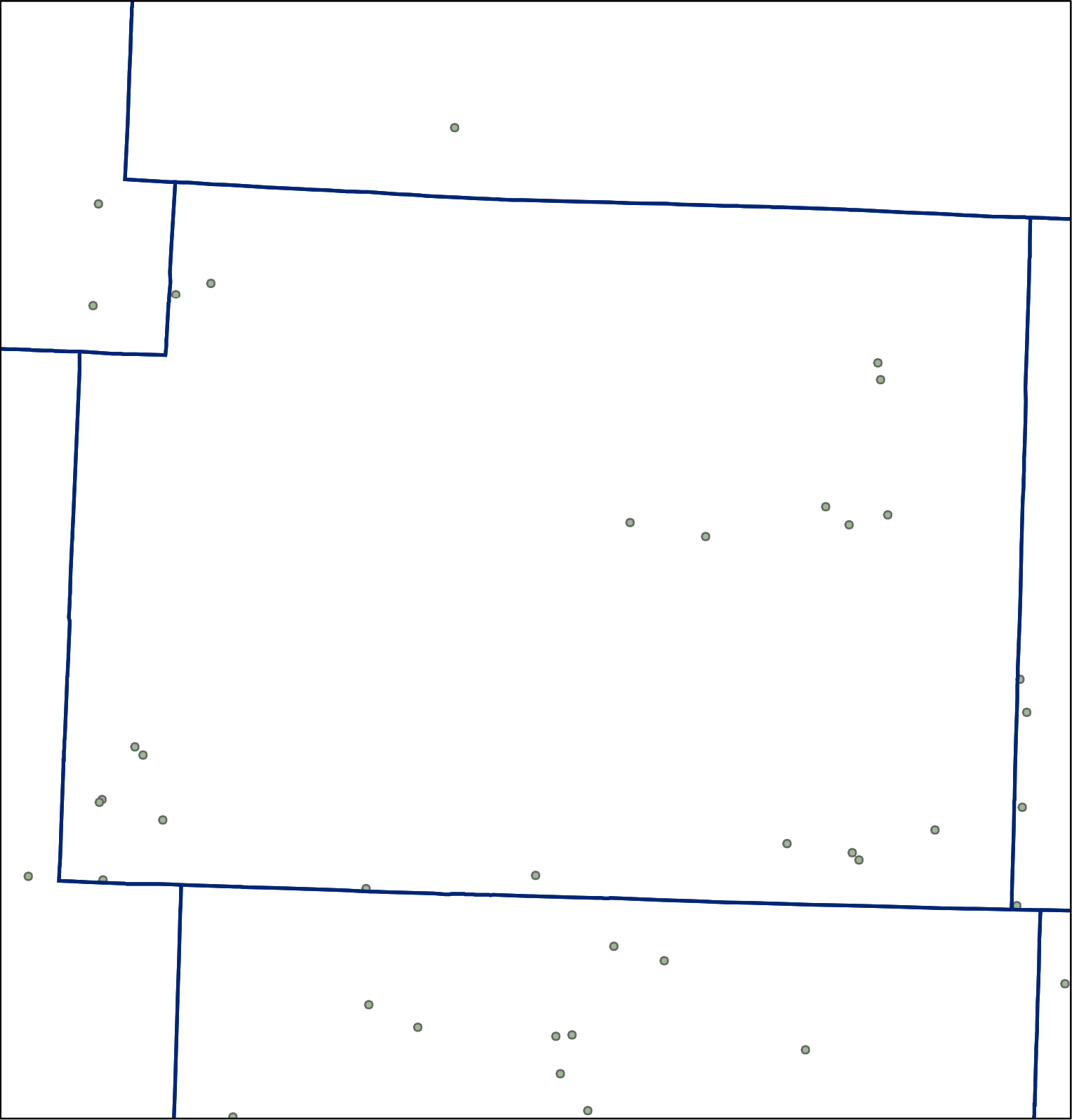
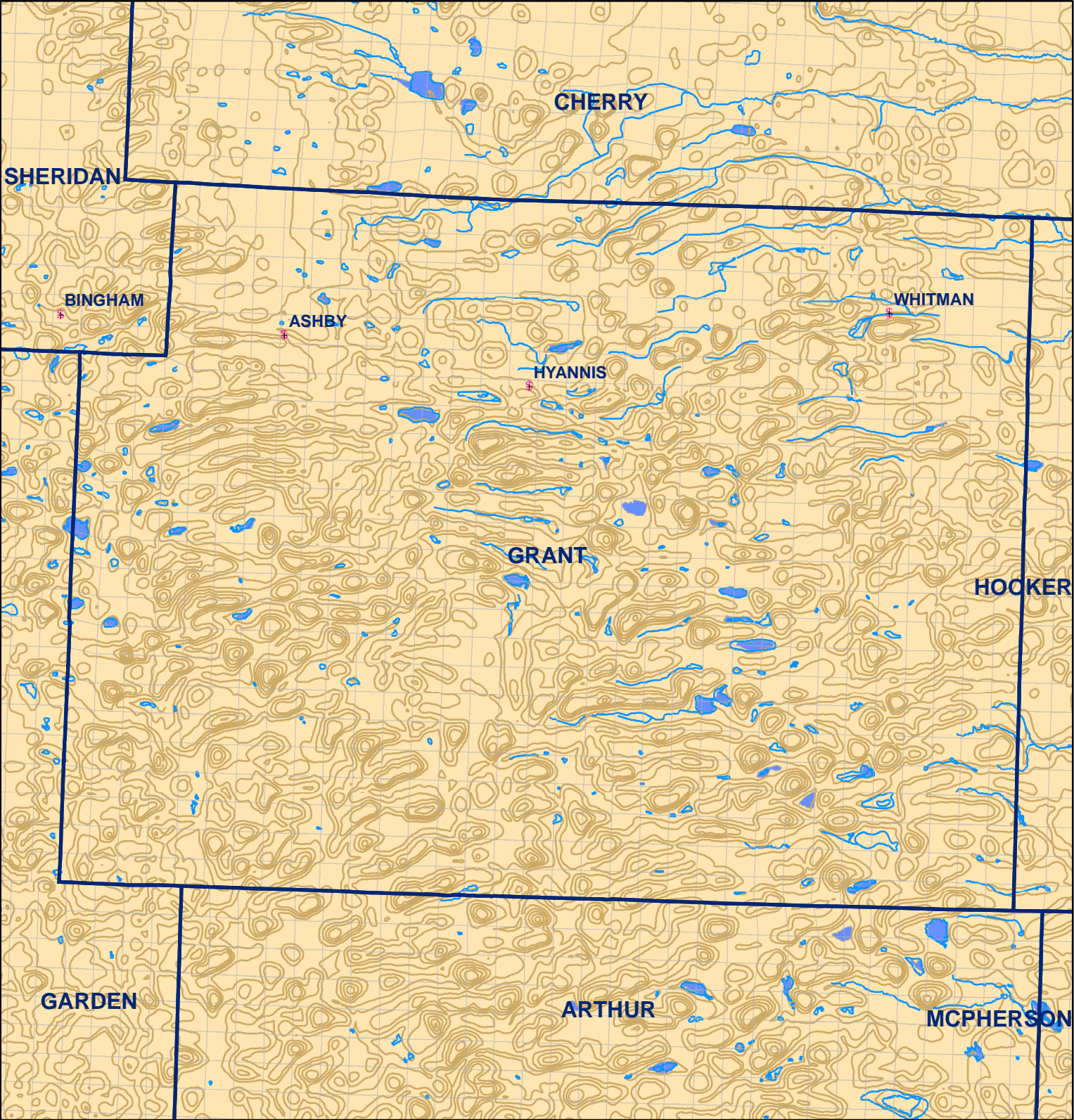


 Market Areas



● Registered Wells > 500 GPM

			1151	1153	1155	1157
1351	1349	1347	1345	1343	1341	1339
1421	1423	1425	1427	1429	1431	1433
1631	1629	1627	1625	1623	1621	1619
1701	1703	1705	1707	1709	1711	1713
1915	1913	1911	1909	1907	1905	1903
1985	1987	1989	1991	1993	1995	
2199	2197	2195	2193	2191	2189	



Legend

- Towns
- Sections
- Rivers and Streams
- Topography

Soil Classes

- Lakes and Ponds
- Excessively drained sandy soils formed in alluvium in valleys and eolian sand on uplands in sandhills
- Excessively drained sandy soils formed in eolian sands on uplands in sandhills
- Moderately well drained silty soils on uplands and in depressions formed in loess
- Well drained silty soils formed in loess on uplands
- Well drained silty soils formed in loess and alluvium on stream terraces
- Well to somewhat excessively drained loamy soils formed in weathered sandstone and eolian material on uplands
- Somewhat poorly drained soils formed in alluvium on bottom lands
- Moderately well drained silty soils with clayey subsoils on uplands

Grant County