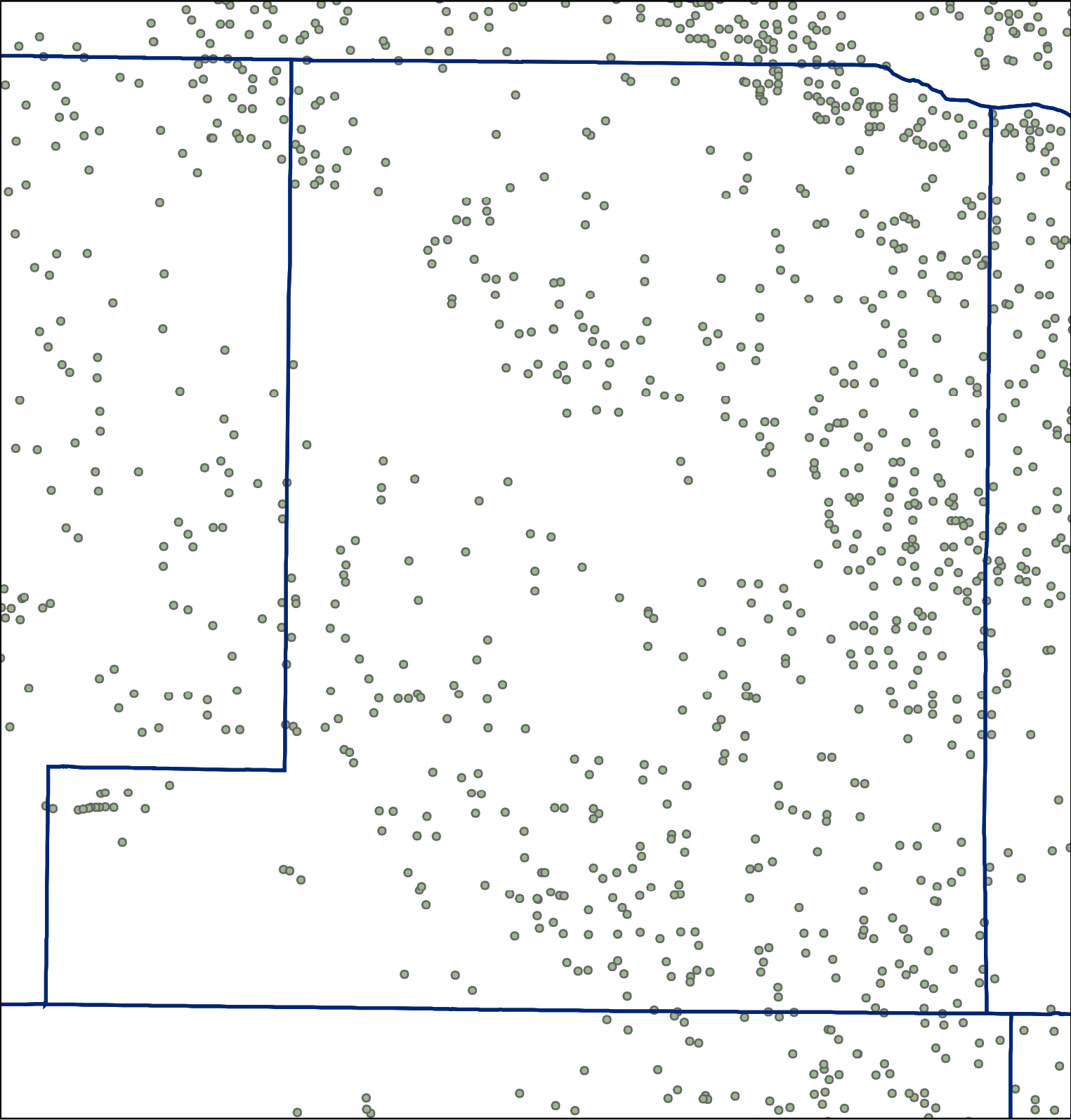
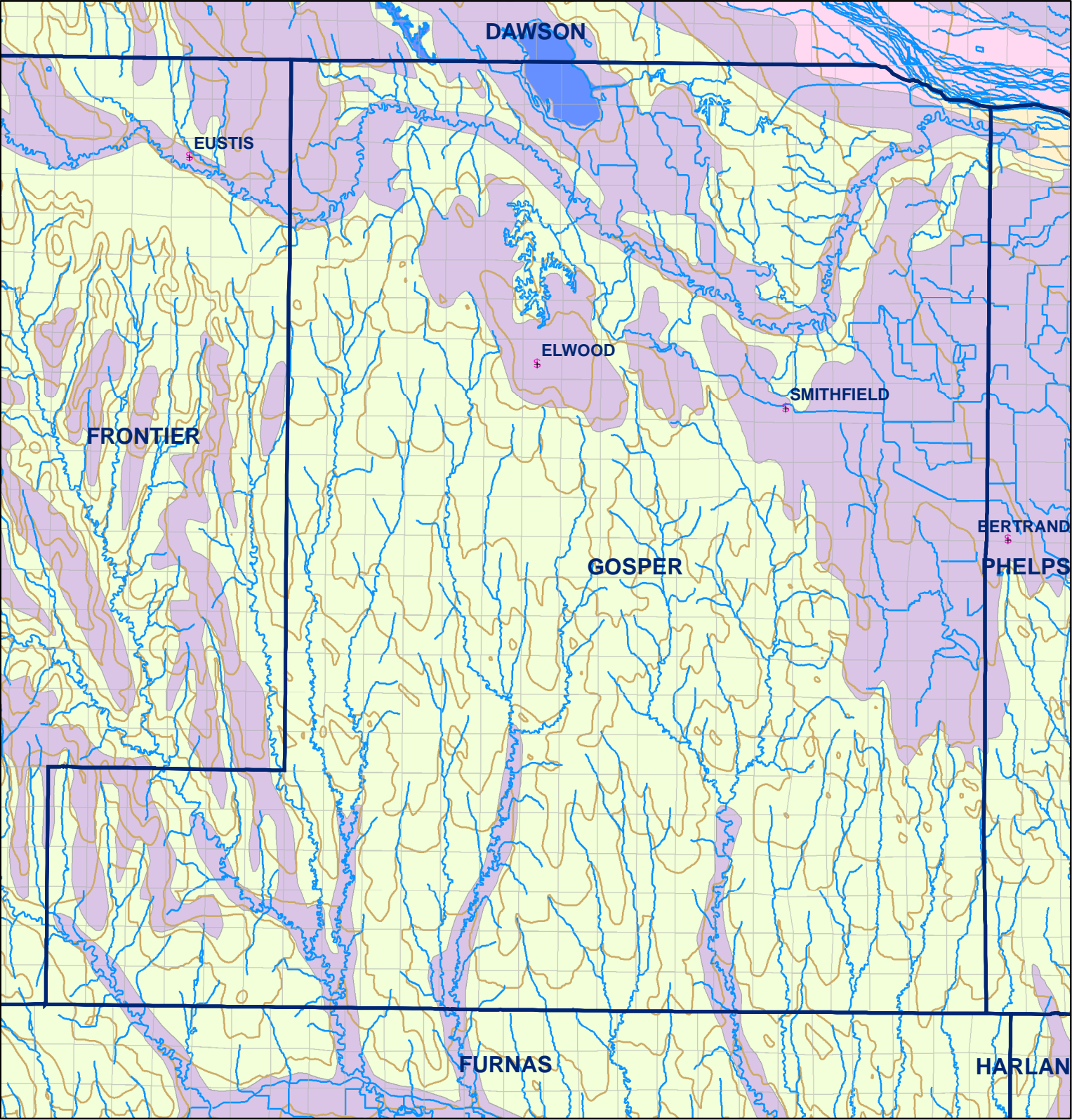


Market Areas



● Registered Wells > 500 GPM

	3563	3561	3559	3557	3555
3633	3635	3637	3639	3641	3643
3797	3795	3793	3791	3789	3787
3867	3869	3871	3873	3875	3877
4033	4031	4029	4027	4025	4023
4103	4105	4107	4109	4111	4113



- Legend**
- § Towns
 - Sections
 - Rivers and Streams
 - Topography

- Soil Classes**
- Lakes and Ponds
 - Excessively drained sandy soils formed in alluvium in valleys and eolian sand on uplands in sandhills
 - Excessively drained sandy soils formed in eolian sands on uplands in sandhills
 - Moderately well drained silty soils on uplands and in depressions formed in loess
 - Well drained silty soils formed in loess on uplands
 - Well drained silty soils formed in loess and alluvium on stream terraces
 - Well to somewhat excessively drained loamy soils formed in weathered sandstone and eolian material on uplands
 - Somewhat poorly drained soils formed in alluvium on bottom lands
 - Moderately well drained silty soils with clayey subsoils on uplands

Gosper County