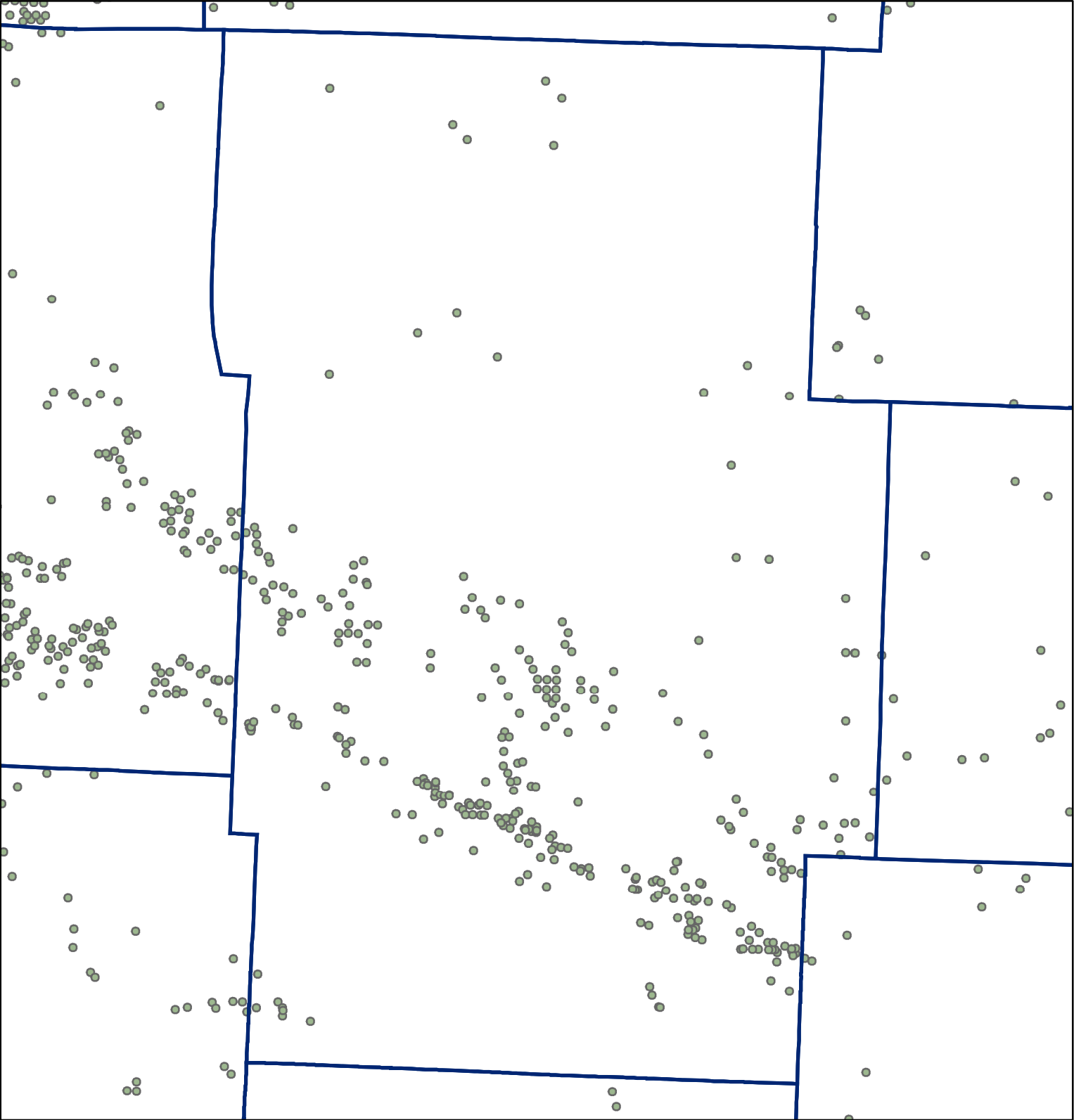
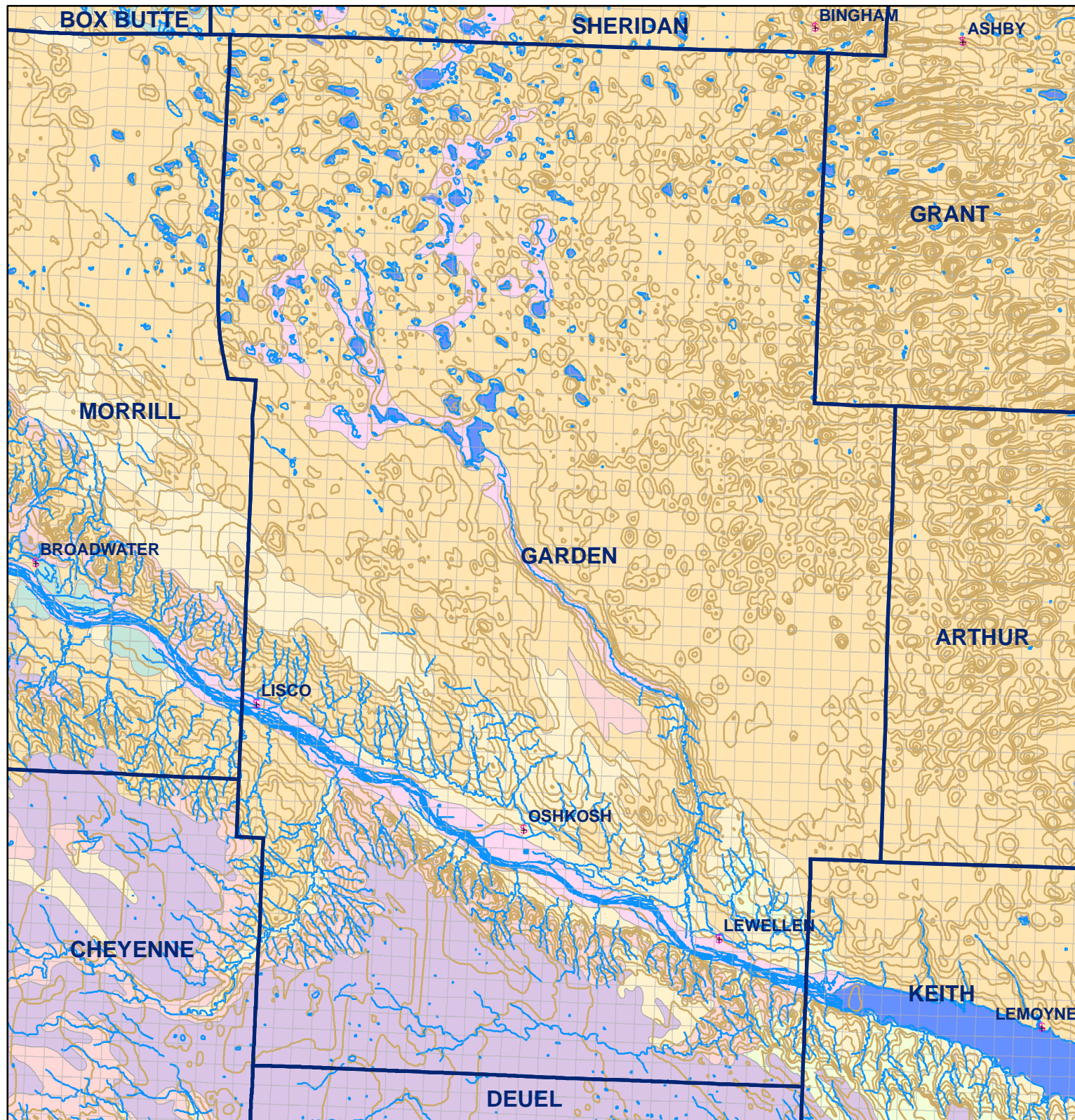


Market Areas



● Registered Wells > 500 GPM

1407	1409		1411	1413	1415	1417	1419	1421	1423	1425
1645	1643		1641	1639	1637	1635	1633	1631	1629	1627
1687	1689		1691	1693	1695	1697	1699	1701	1703	1705
1929	1927		1925	1923	1921	1919	1917	1915	1913	1911
1971	1973		1975	1977	1979	1981	1983	1985	1987	1989
2213	2211		2209	2207	2205	2203	2201	2199	2197	2195
2255	2257		2259	2261	2263	2265	2267	2269	2271	2273
2501	2499		2497	2495	2493	2491	2489	2487	2485	2483
2545	2547		2549	2551	2553	2555	2557	2559	2561	2563
2795	2793		2791	2789	2787	2785	2783	2781	2779	2777
2841	2843		2845	2847	2849	2851	2853	2855	2857	2859



Legend

- + Towns
- Sections
- Rivers and Streams
- Topography

Soil Classes

- Lakes and Ponds
- Excessively drained sandy soils formed in alluvium in valleys and eolian sand on uplands in sandhills
- Excessively drained sandy soils formed in eolian sands on uplands in sandhills
- Moderately well drained silty soils on uplands and in depressions formed in loess
- Well drained silty soils formed in loess on uplands
- Well drained silty soils formed in loess and alluvium on stream terraces
- Well to somewhat excessively drained loamy soils formed in weathered sandstone and eolian material on uplands
- Somewhat poorly drained soils formed in alluvium on bottom lands
- Moderately well drained silty soils with clayey subsoils on uplands

Garden County