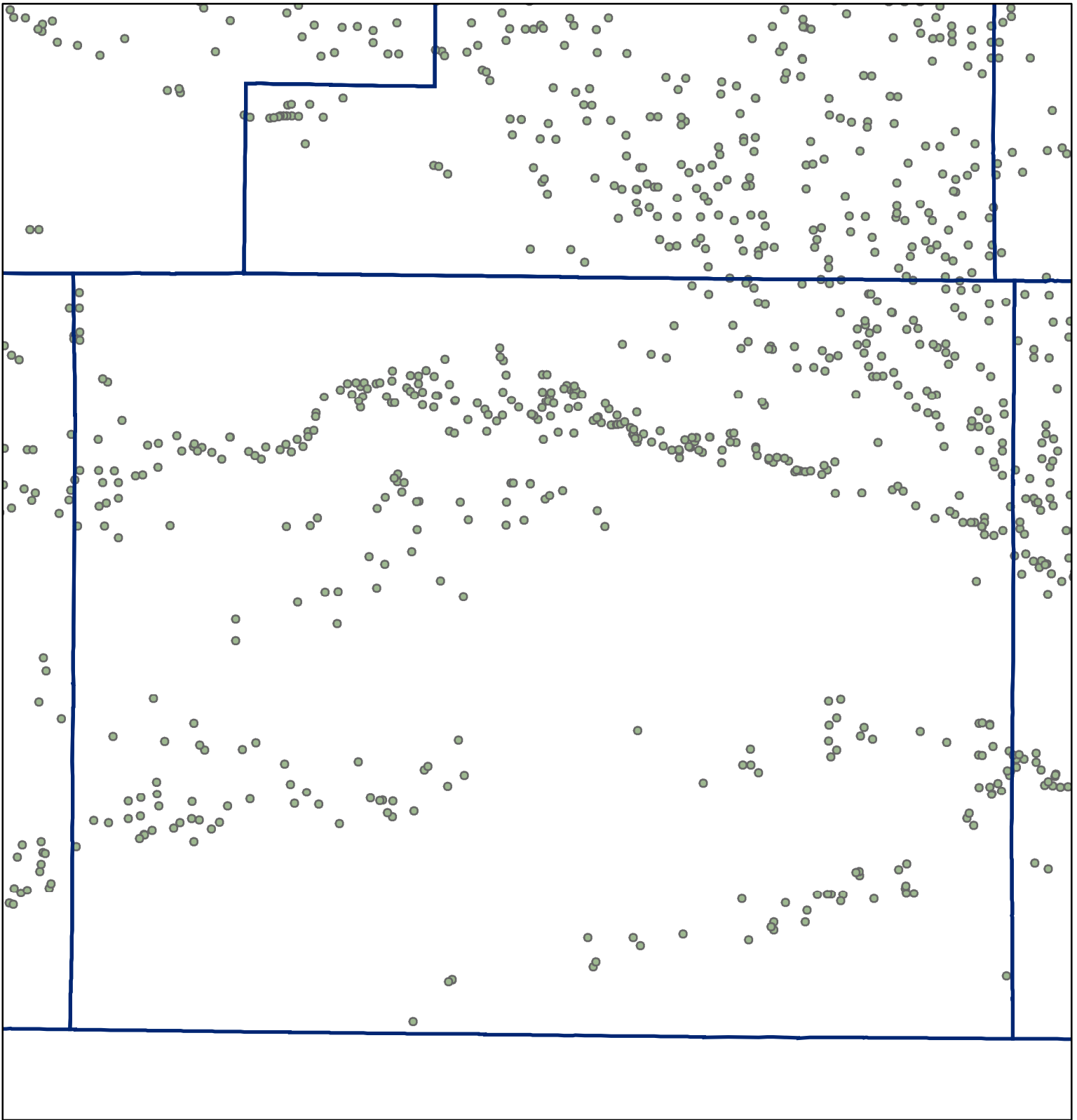
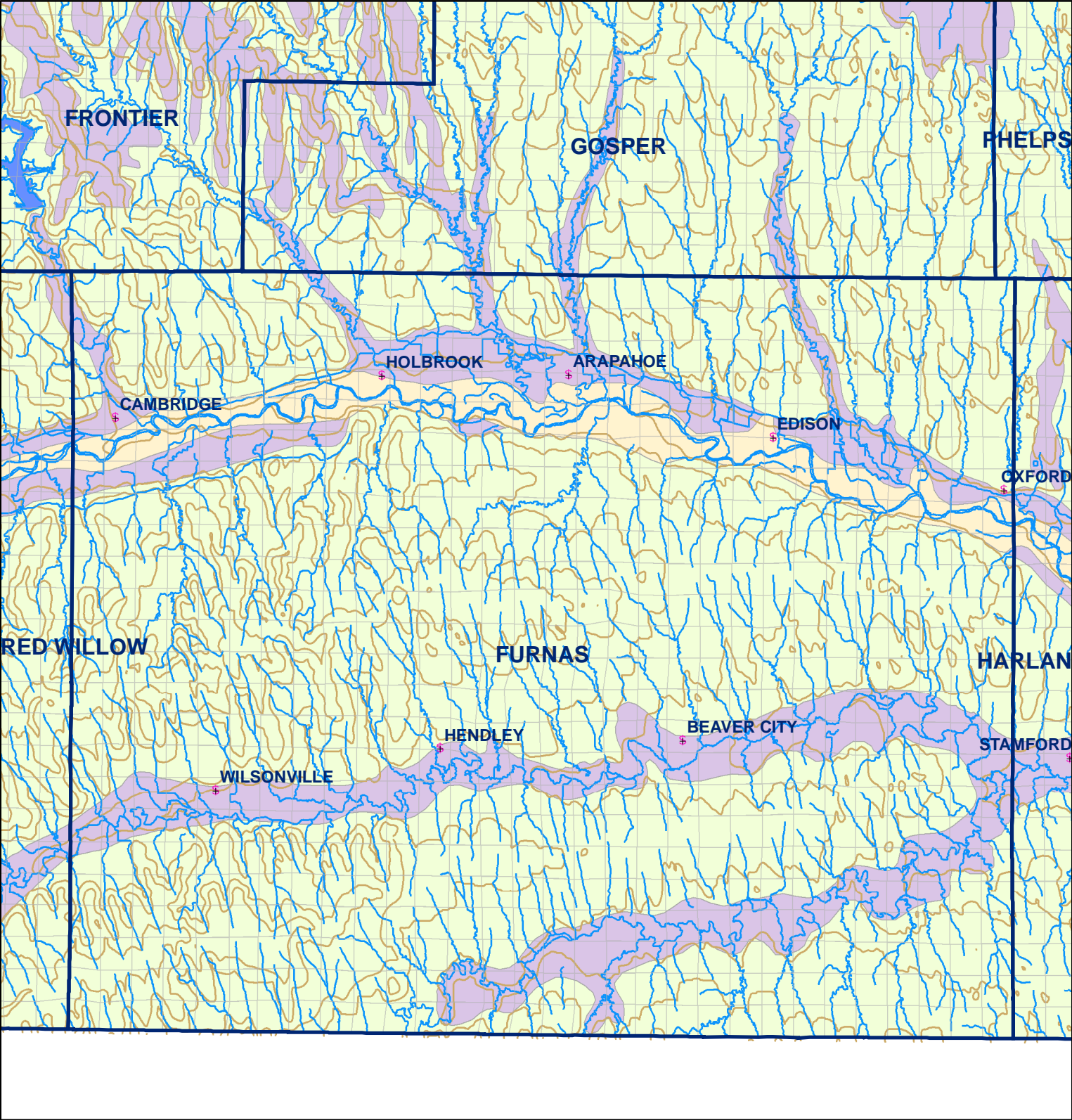


Market Areas



● Registered Wells > 500 GPM

3865	3867	3869	3871	3873	3875	3877
4035	4033	4031	4029	4027	4025	4023
4101	4103	4105	4107	4109	4111	4113
4275	4273	4271	4269	4267	4265	4263
4341	4343	4345	4347	4349	4351	4353
4521	4519	4517	4515	4513	4511	4509



Legend

⌘

Towns

□

Sections

—

Rivers and Streams

—

Topography

Soil Classes

■

Lakes and Ponds

■

Excessively drained sandy soils formed in alluvium in valleys and eolian sand on uplands in sandhills

■

Excessively drained sandy soils formed in eolian sands on uplands in sandhills

■

Moderately well drained silty soils on uplands and in depressions formed in loess

■

Well drained silty soils formed in loess on uplands

■

Well drained silty soils formed in loess and alluvium on stream terraces

■

Well to somewhat excessively drained loamy soils formed in weathered sandstone and eolian material on uplands

■

Somewhat poorly drained soils formed in alluvium on bottom lands

■

Moderately well drained silty soils with clayey subsoils on uplands

Furnas County

Exhibit 33 A - page 4