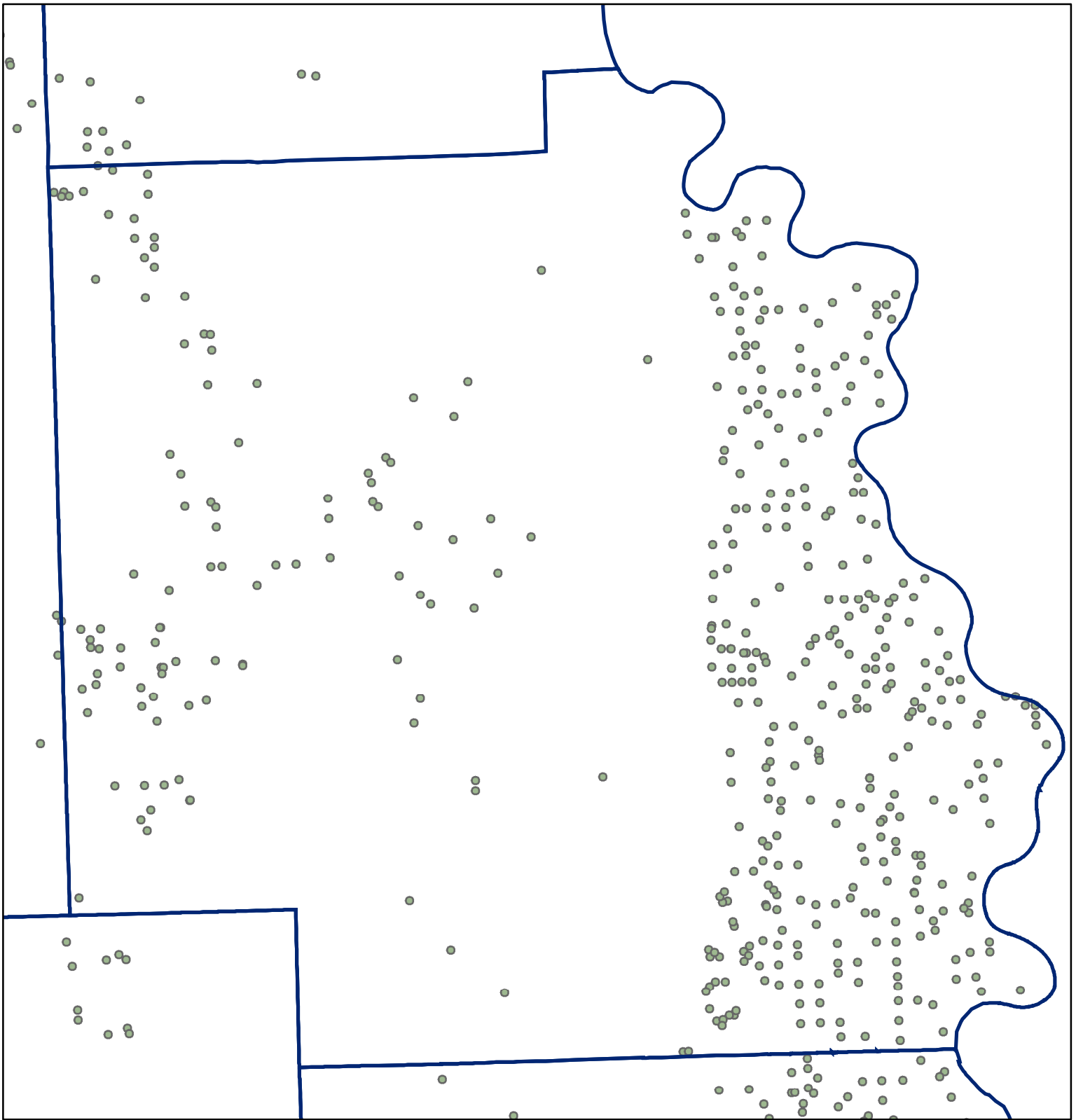
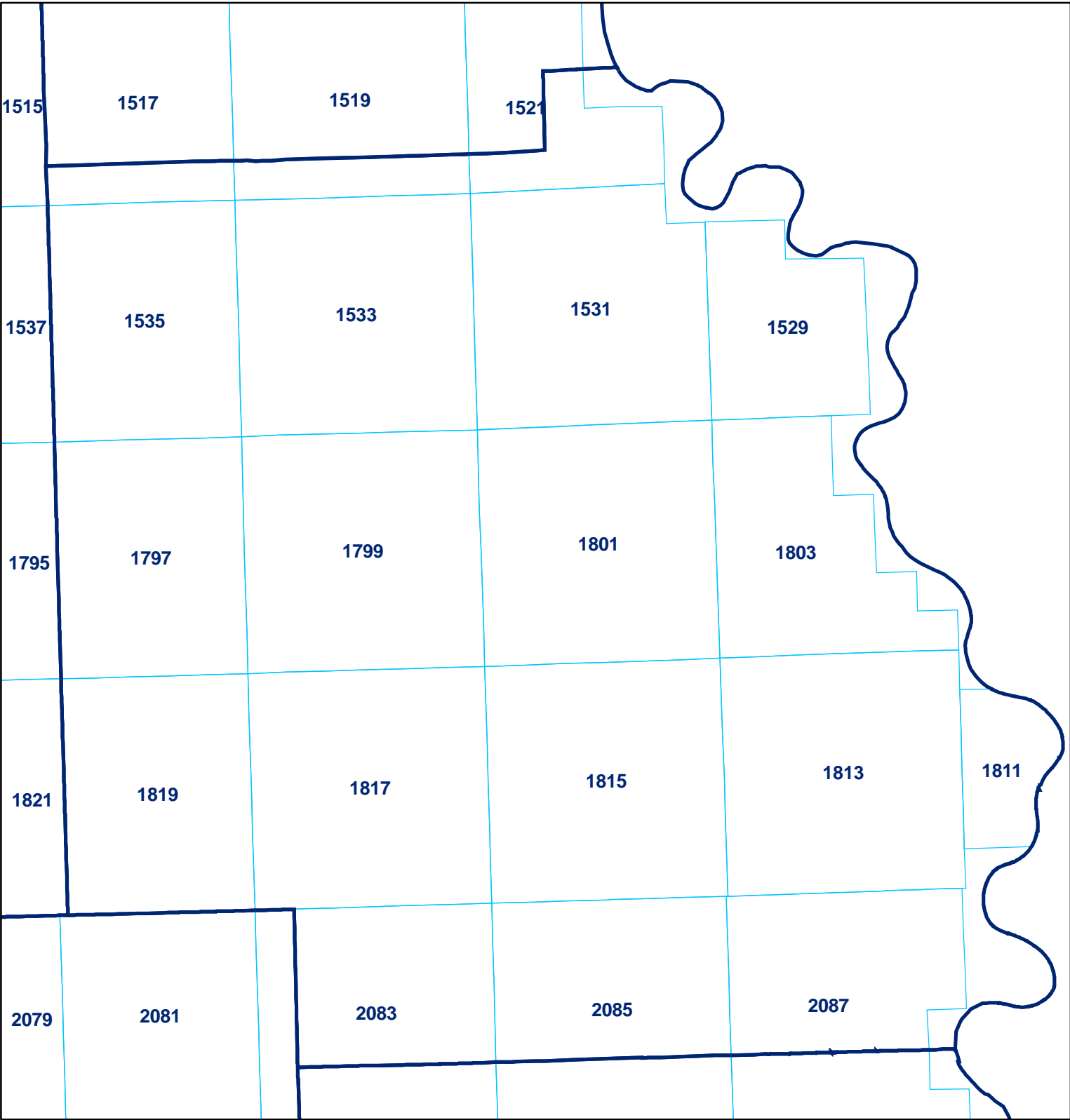
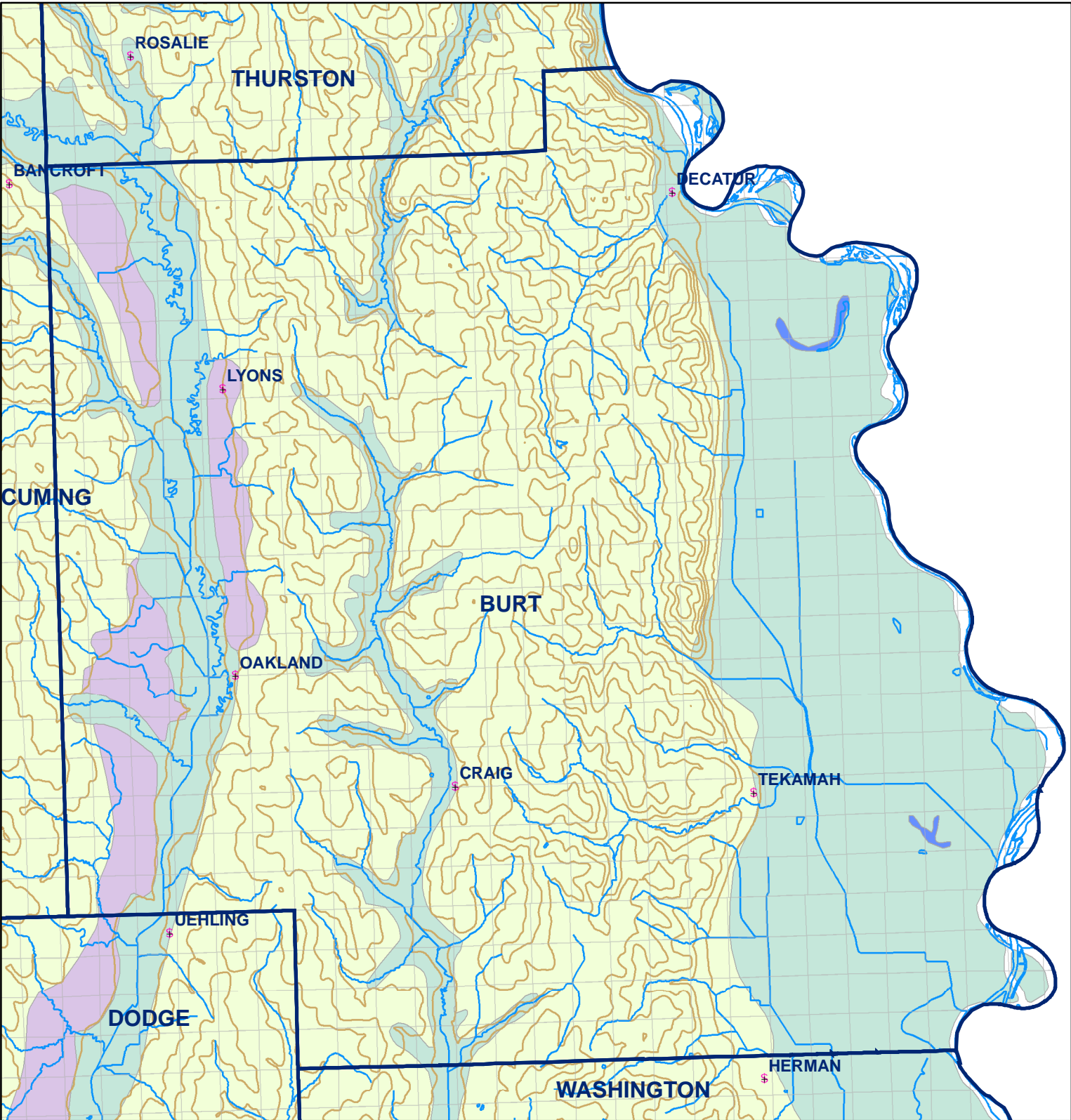


Market Areas



● Registered Wells > 500 GPM





- Legend**

  - Towns
  - Sections
  - Rivers and Streams
  - Topography
- Soil Classes**

  - Lakes and Ponds
  - Excessively drained sandy soils formed in alluvium in valleys and eolian sand on uplands in sandhills
  - Excessively drained sandy soils formed in eolian sands on uplands in sandhills
  - Moderately well drained silty soils on uplands and in depressions formed in loess
  - Well drained silty soils formed in loess on uplands
  - Well drained silty soils formed in loess and alluvium on stream terraces
  - Well to somewhat excessively drained loamy soils formed in weathered sandstone and eolian material on uplands
  - Somewhat poorly drained soils formed in alluvium on bottom lands
  - Moderately well drained silty soils with clayey subsoils on uplands