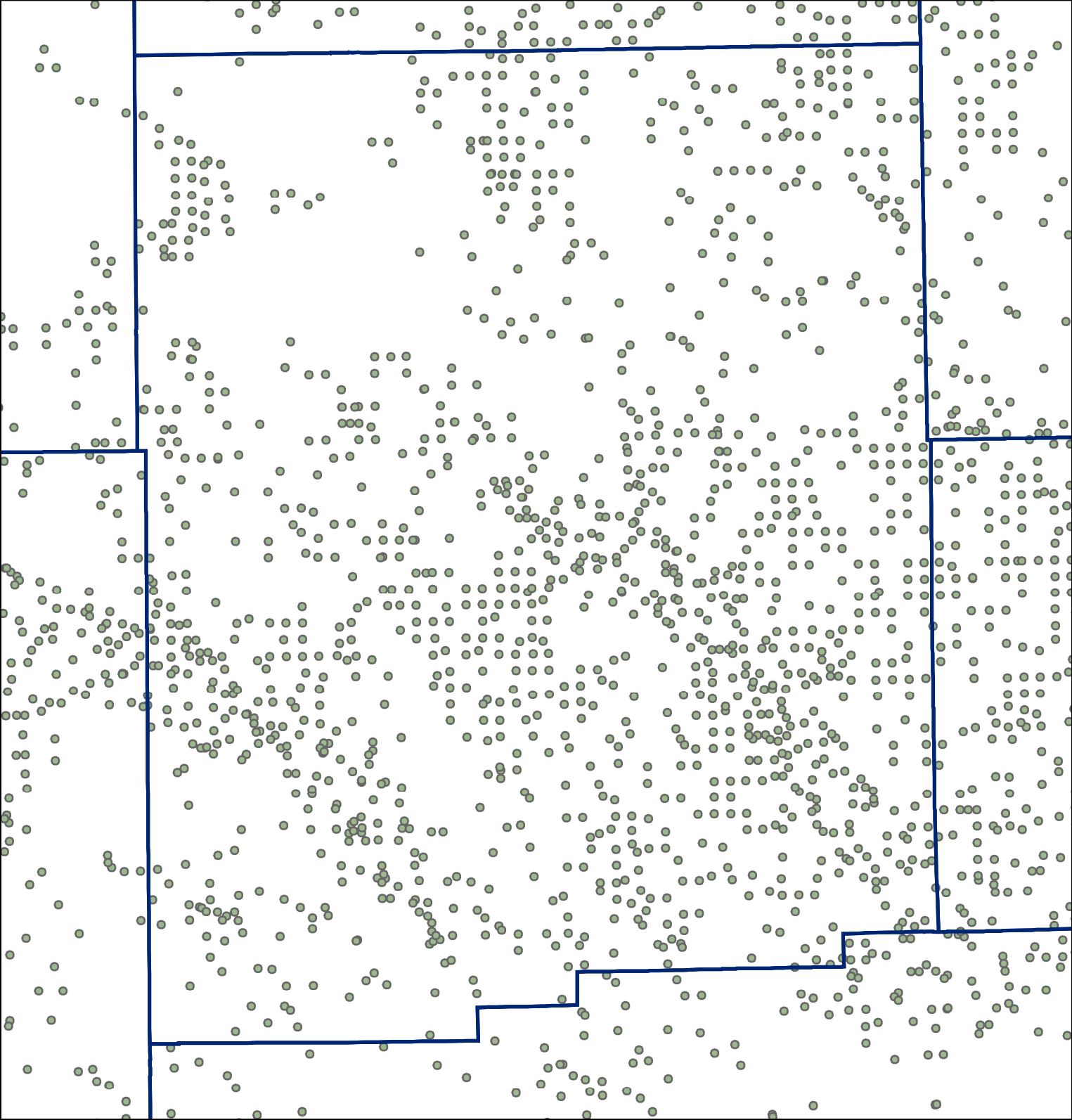
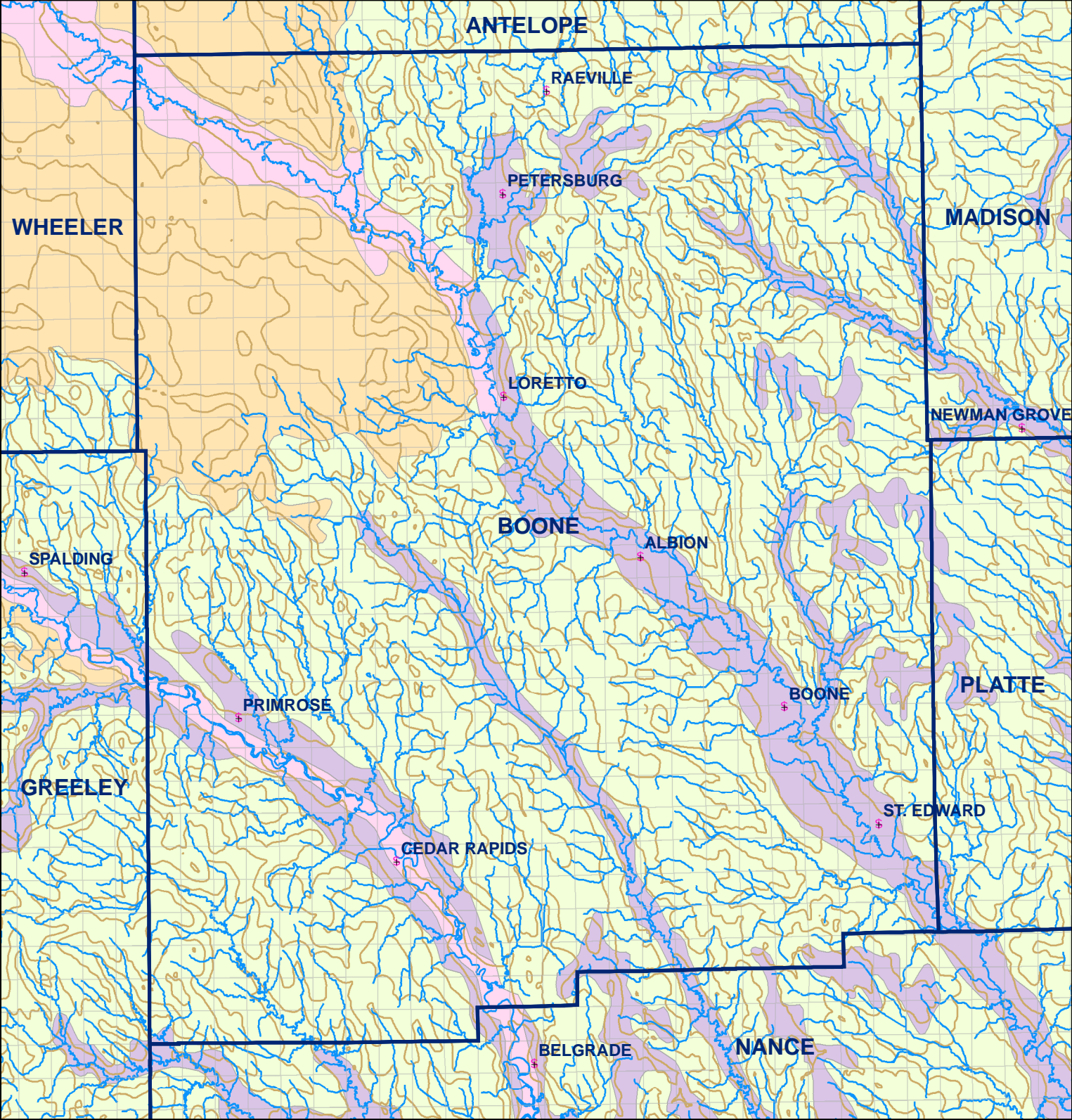


Market Areas



● Registered Wells > 500 GPM

1567	1565	1563	1561	1559	1557
1765	1767	1769	1771	1773	1775
1851	1849	1847	1845	1843	1841
2049	2051	2053	2055	2057	2059
2135	2133	2131	2129	2127	2125
2333	2335	2337	2339	2341	2343
2423	2421	2419	2417	2415	2413



- Legend**
- Towns
 - Sections
 - Rivers and Streams
 - Topography

- Soil Classes**
- Lakes and Ponds
 - Excessively drained sandy soils formed in alluvium in valleys and eolian sand on uplands in sandhills
 - Excessively drained sandy soils formed in eolian sands on uplands in sandhills
 - Moderately well drained silty soils on uplands and in depressions formed in loess
 - Well drained silty soils formed in loess on uplands
 - Well drained silty soils formed in loess and alluvium on stream terraces
 - Well to somewhat excessively drained loamy soils formed in weathered sandstone and eolian material on uplands
 - Somewhat poorly drained soils formed in alluvium on bottom lands
 - Moderately well drained silty soils with clayey subsoils on uplands

Boone County