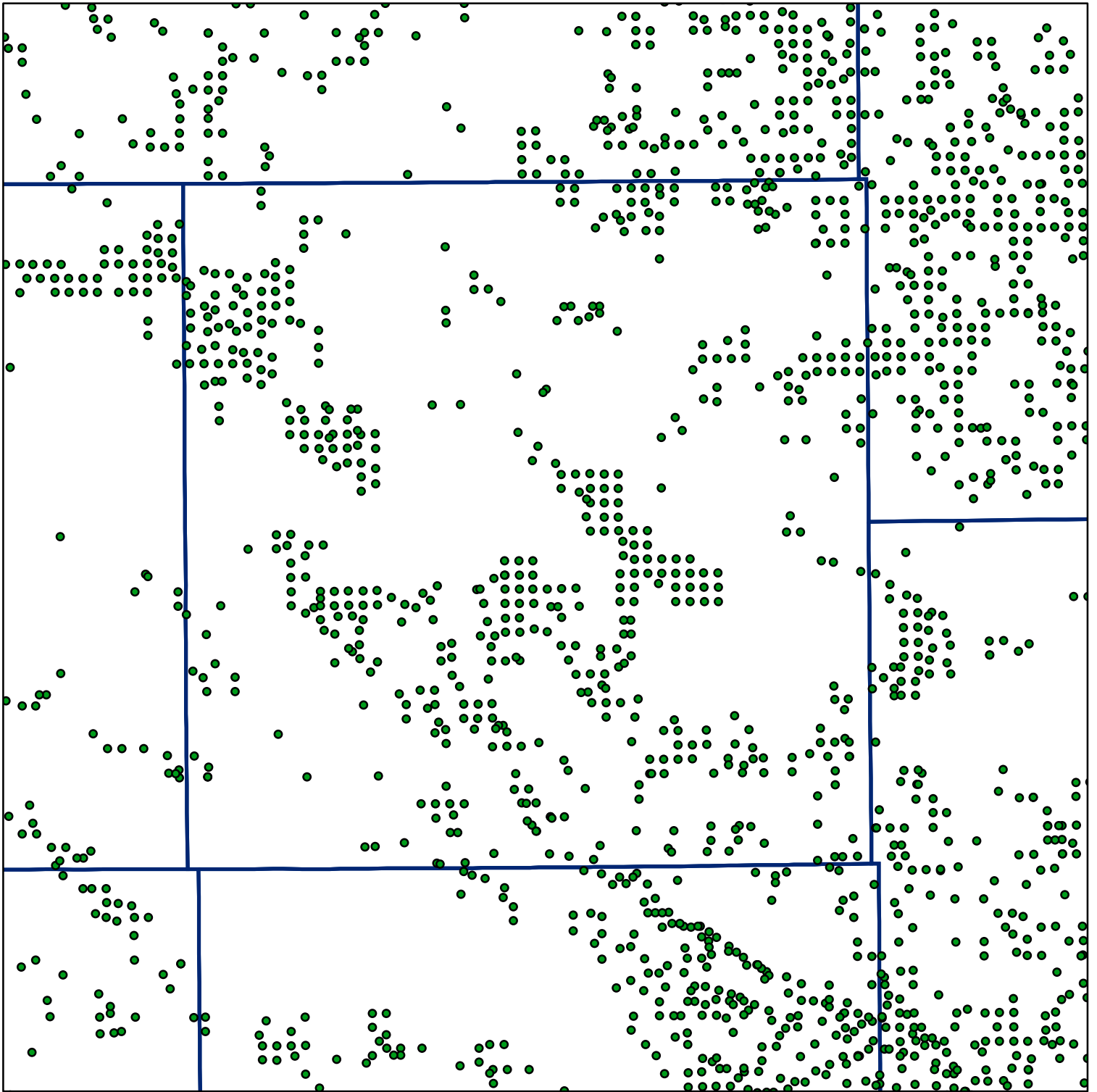


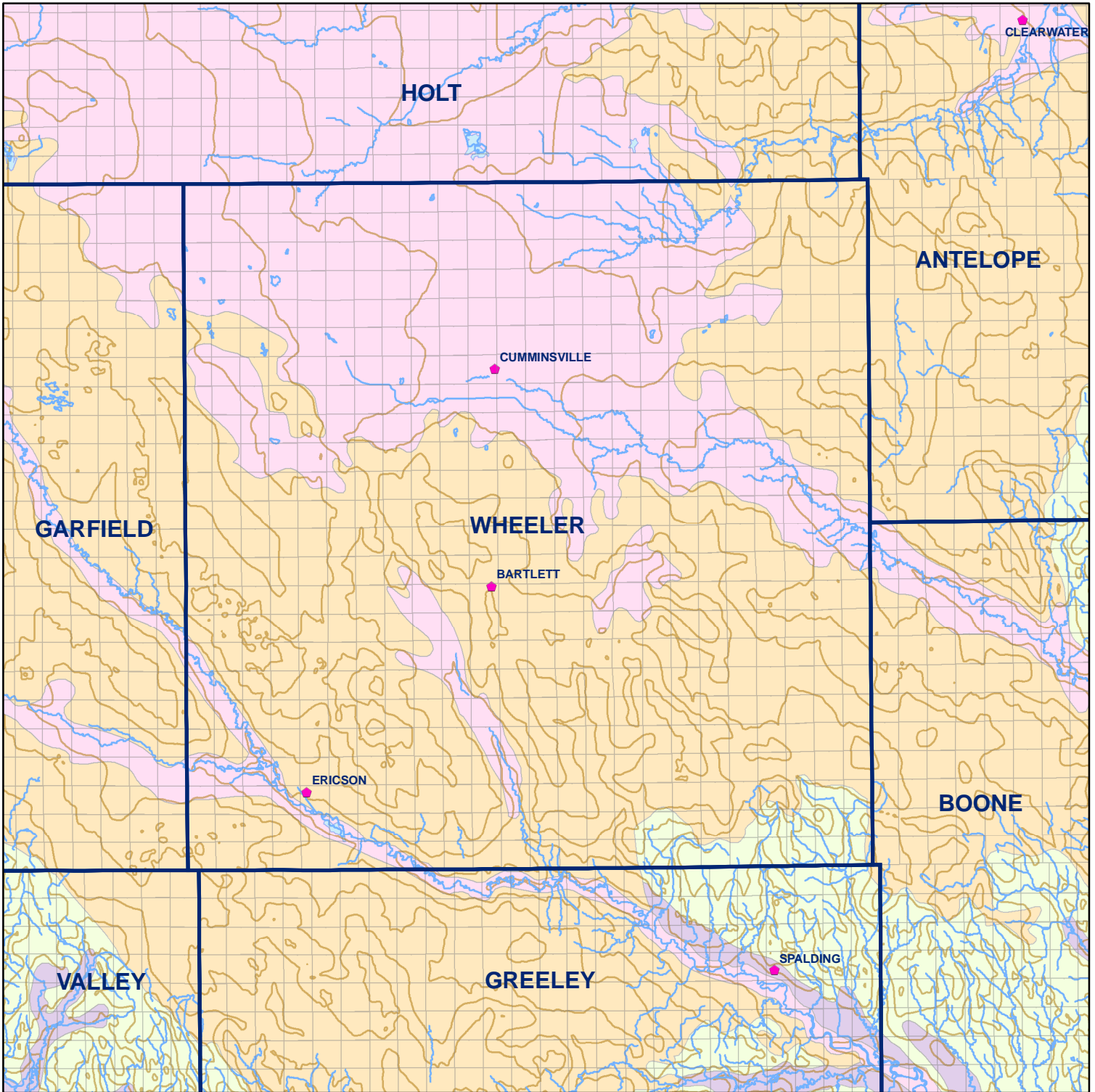
Market Areas



● Registered Wells > 500 GPM

1201	1203	1205	1207	1209	1211	1213
1295	1293	1291	1289	1287	1285	1283
1475	1477	1479	1481	1483	1485	1487
1489						
1577	1575	1573	1571	1569	1567	1565
1563						
1755	1757	1759	1761	1763	1765	1767
1769						
1861	1859	1857	1855	1853	1851	1849
1847						
2039	2041	2043	2045	2047	2049	2051
2053						
2145	2143	2141	2139	2137	2135	2133
2131						

Geo Codes



Wheeler County

Legend

Towns

Sections

Rivers and Streams

Topography

Soil Classes

Lakes and Ponds

Excessively drained sandy soils formed in alluvium in valleys and eolian sand on uplands in sandhills

Excessively drained sandy soils formed in eolian sands on uplands in sandhills

Moderately well drained silty soils on uplands and in depressions formed in loess

Well drained silty soils formed in loess on uplands

Well drained silty soils formed in loess and alluvium on stream terraces

Well to somewhat excessively drained loamy soils formed in weathered sandstone and eolian material on uplands

Somewhat poorly drained soils formed in alluvium on bottom lands

Moderately well drained silty soils with clayey subsoils on uplands