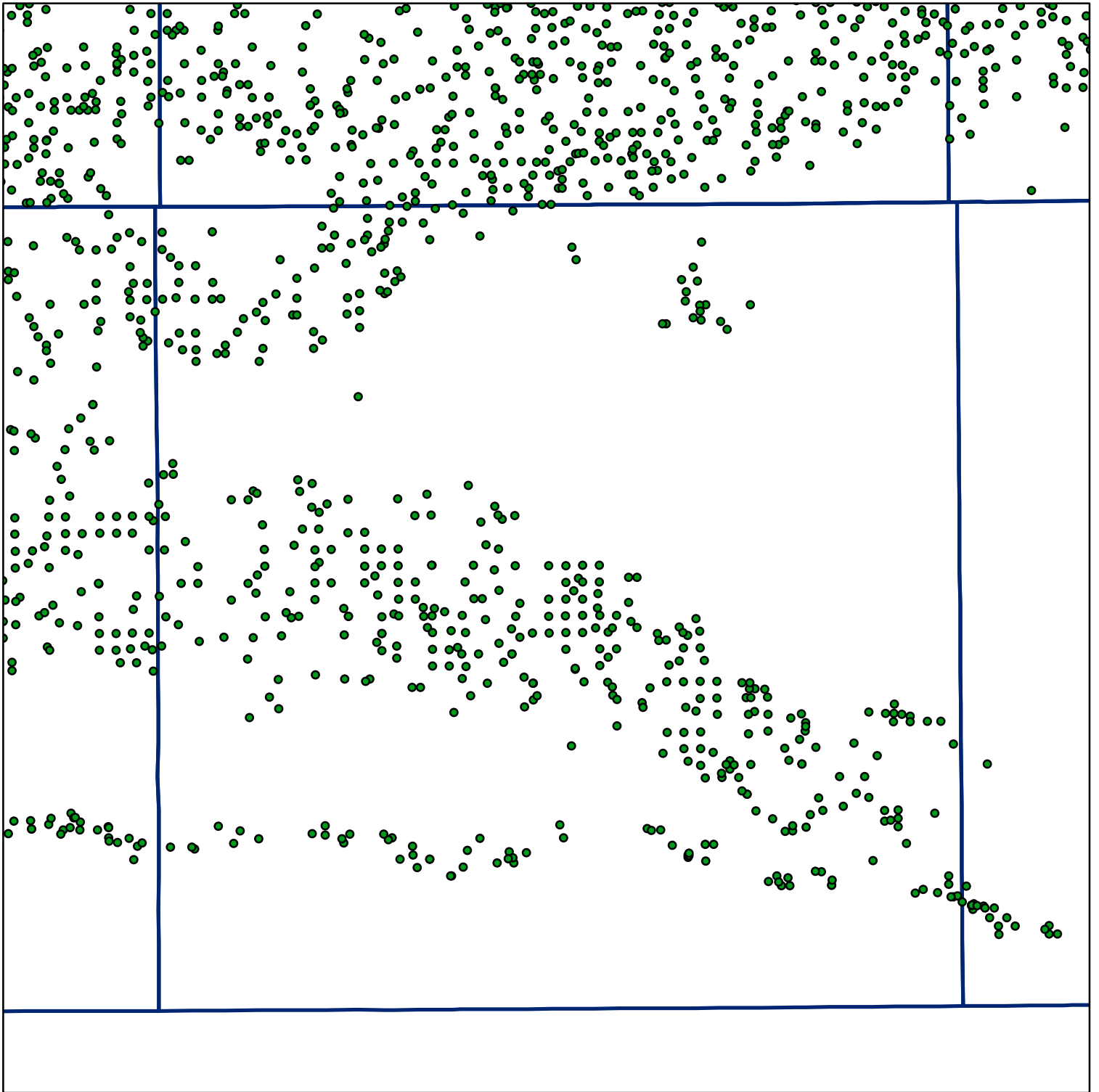


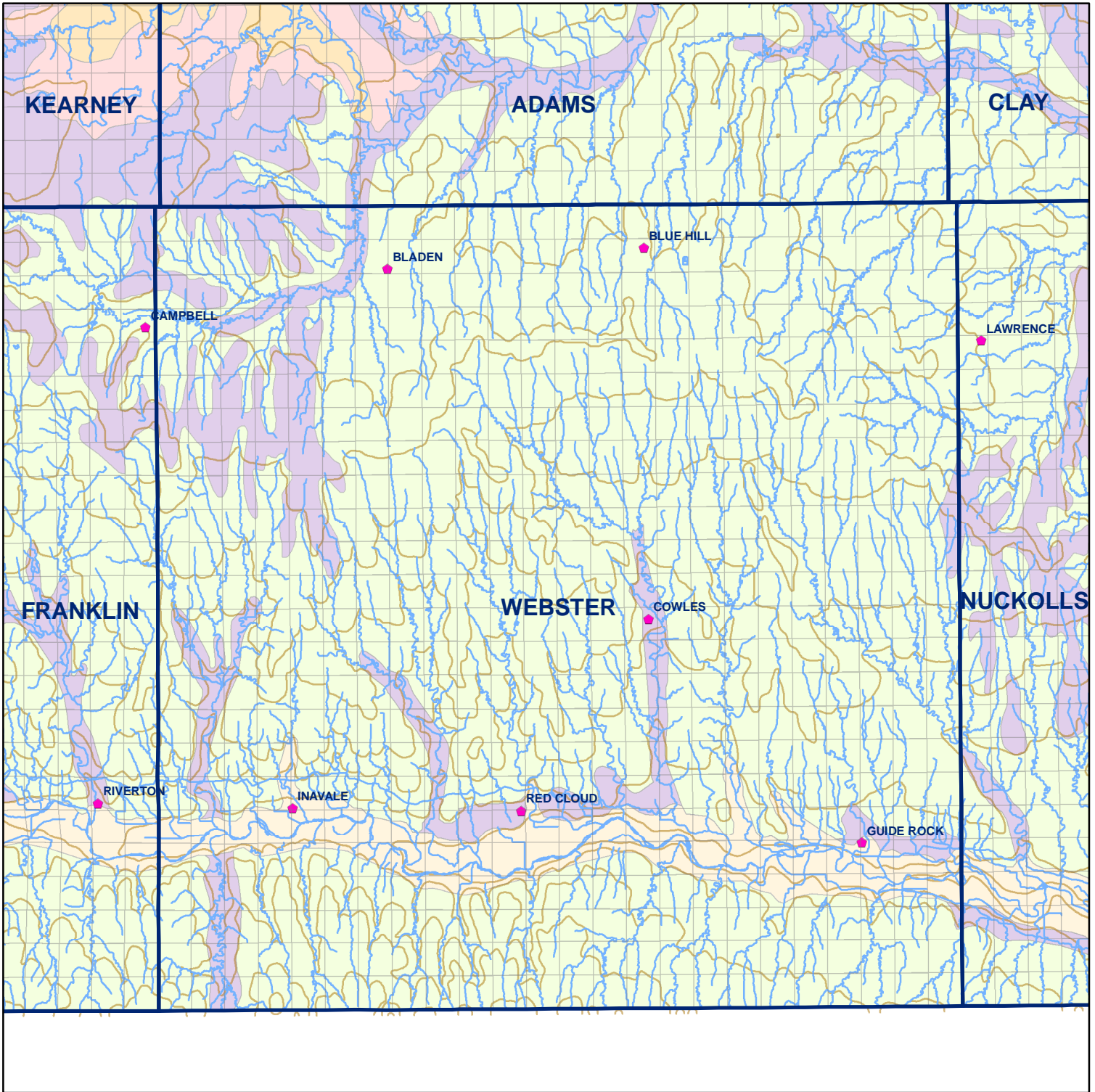
 Market Areas



● Registered Wells > 500 GPM

|      |      |      |      |      |      |
|------|------|------|------|------|------|
| 3891 | 3893 | 3895 |      |      |      |
| 4009 | 4007 | 4005 | 4003 | 4001 | 3999 |
| 4127 | 4129 | 4131 | 4133 | 4135 | 4137 |
| 4249 | 4247 | 4245 | 4243 | 4241 | 4239 |
| 4367 | 4369 | 4371 | 4373 | 4375 | 4377 |
| 4495 | 4493 | 4491 | 4489 | 4487 | 4485 |
|      |      |      |      |      |      |

Geo Codes



# Webster County

**Legend**

⌘ **Towns**

□ **Sections**

— **Rivers and Streams**

— **Topography**

**Soil Classes**

- Lakes and Ponds
- Excessively drained sandy soils formed in alluvium in valleys and eolian sand on uplands in sandhills
- Excessively drained sandy soils formed in eolian sands on uplands in sandhills
- Moderately well drained silty soils on uplands and in depressions formed in loess
- Well drained silty soils formed in loess on uplands
- Well drained silty soils formed in loess and alluvium on stream terraces
- Well to somewhat excessively drained loamy soils formed in weathered sandstone and eolian material on uplands
- Somewhat poorly drained soils formed in alluvium on bottom lands
- Moderately well drained silty soils with clayey subsoils on uplands