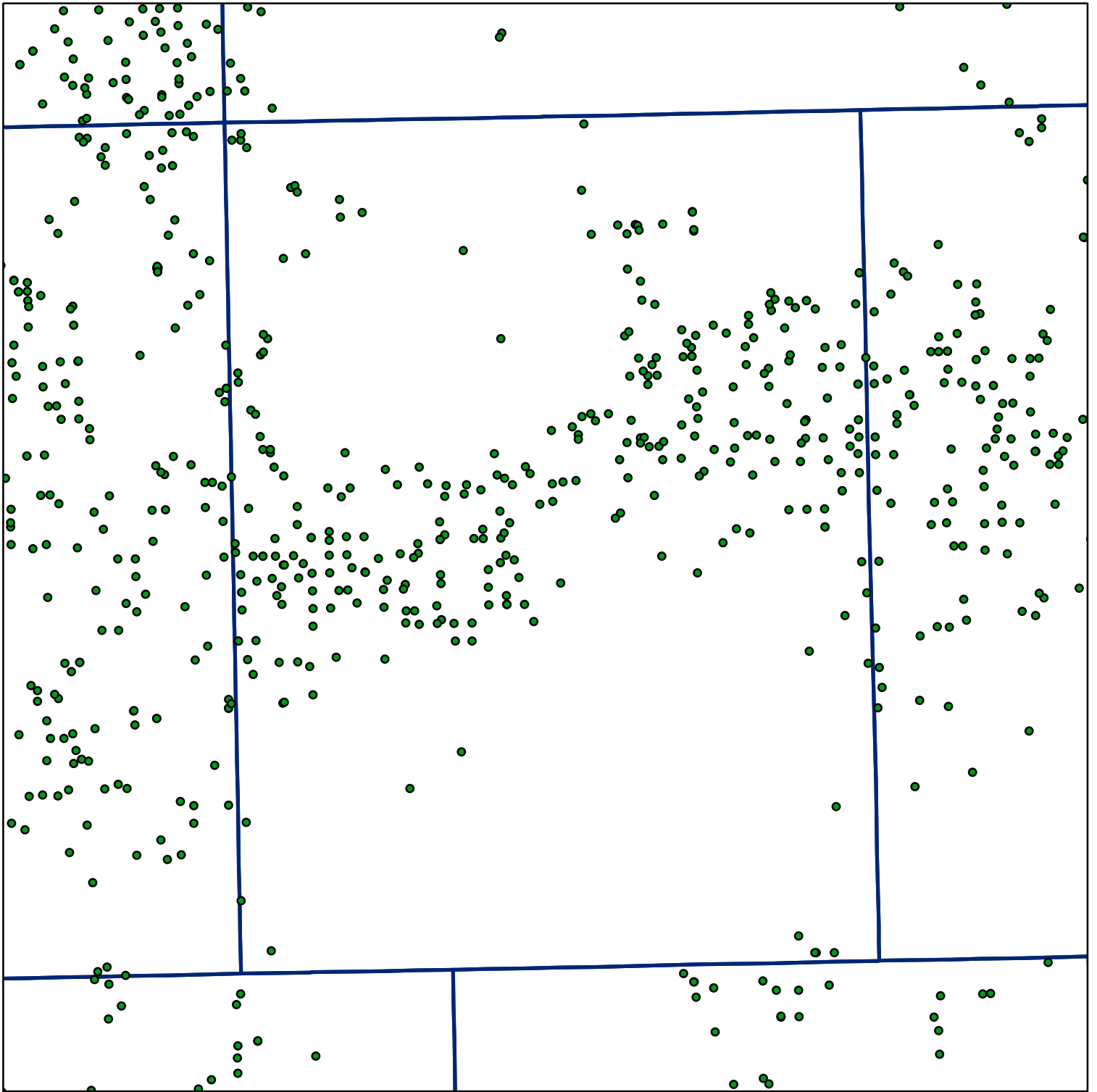


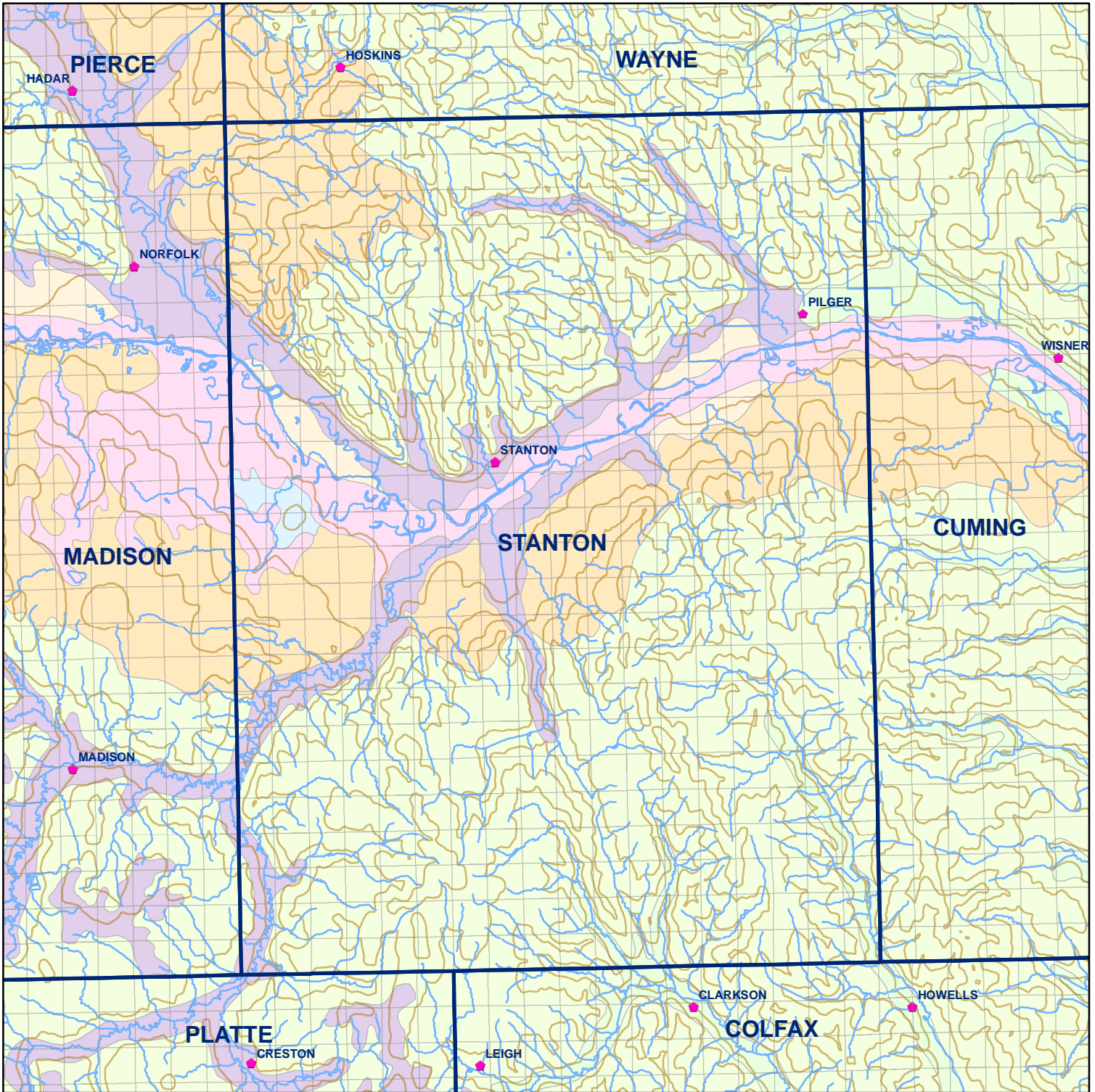
 Market Areas



● Registered Wells > 500 GPM

|      |      |      |      |      |      |      |
|------|------|------|------|------|------|------|
| 1273 | 1271 | 1269 | 1267 | 1265 | 1263 | 1261 |
| 1499 | 1501 | 1503 | 1505 | 1507 | 1509 | 1511 |
| 1553 | 1551 | 1549 | 1547 | 1545 | 1543 | 1541 |
| 1779 | 1781 | 1783 | 1785 | 1787 | 1789 | 1791 |
| 1837 | 1835 | 1833 | 1831 | 1829 | 1827 |      |
| 2063 | 2065 | 2067 | 2069 | 2071 | 2073 |      |

Geo Codes



# Stanton County

## Legend

⊕ Towns

▭ Sections

— Rivers and Streams

— Topography

## Soil Classes

— Lakes and Ponds

— Excessively drained sandy soils formed in alluvium in valleys and eolian sand on uplands in sandhills

— Excessively drained sandy soils formed in eolian sands on uplands in sandhills

— Moderately well drained silty soils on uplands and in depressions formed in loess

— Well drained silty soils formed in loess on uplands

— Well drained silty soils formed in loess and alluvium on stream terraces

— Well to somewhat excessively drained loamy soils formed in weathered sandstone and eolian material on uplands

— Somewhat poorly drained soils formed in alluvium on bottom lands

— Moderately well drained silty soils with clayey subsoils on uplands