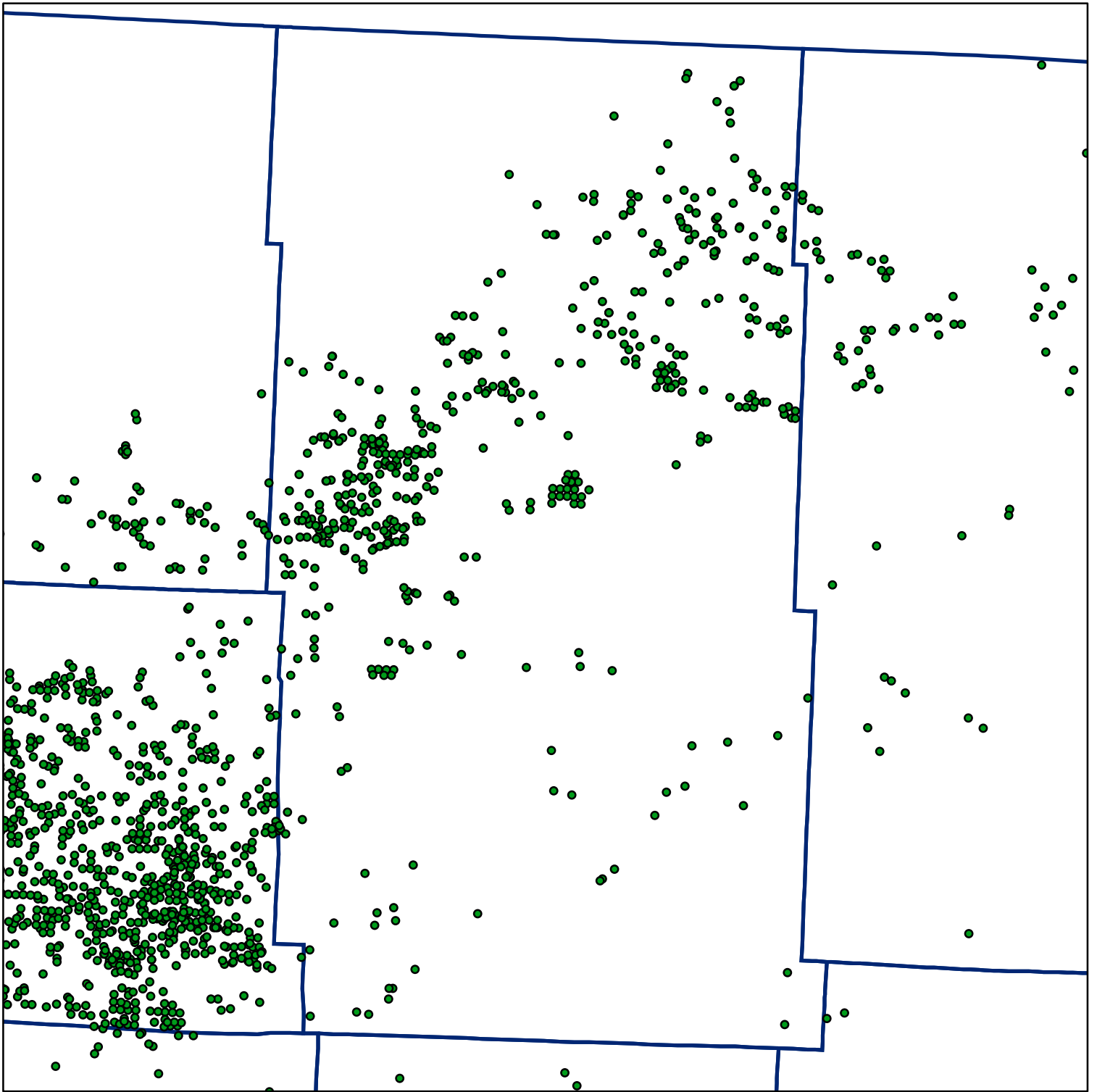


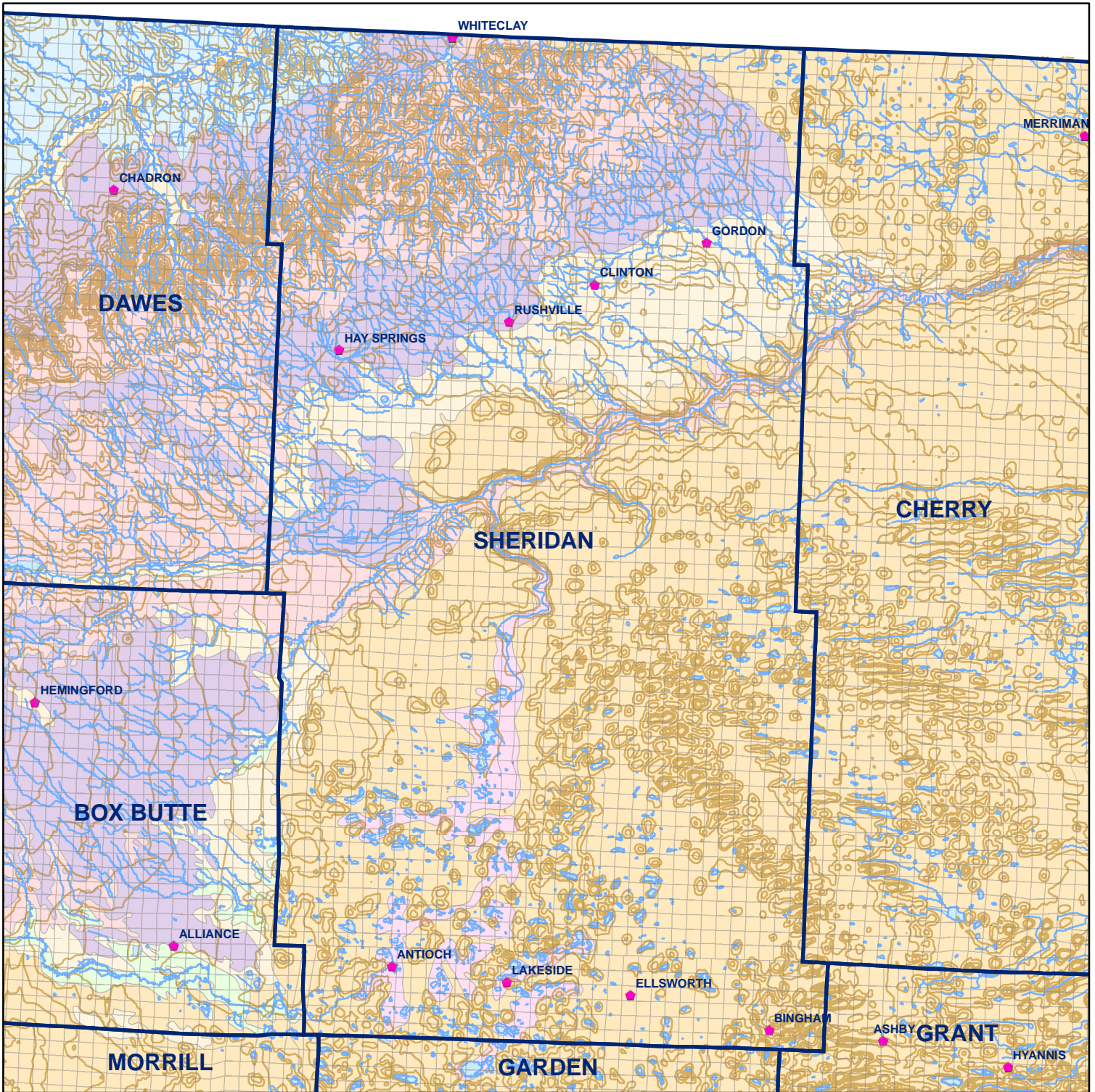
 Market Areas



● Registered Wells > 500 GPM

81	79	77	75	73	71	69	67	65	63	61	59	57	55
111	113	115	117	119	121	123	125	127	129	131	133	135	137
301	299	297	295	293	291	289	287	285	283	281	279	277	275
331	333	335	337	339	341	343	345	347	349	351	353	355	357
555	553	551	549	547	545	543	541	539	537	535	533	531	529
585	587	589	591	593	595	597	599	601	603	605	607	609	611
819	817	815	813	811	809	807	805	803	801	799	797	795	793
851	853	855	857	859	861	863	865	867	869	871	873	875	877
1093	1091	1089	1087	1085	1083	1081	1079	1077	1075	1073	1071	1069	1067
1127	1129	1131	1133	1135	1137	1139	1141	1143	1145	1147	1149	1151	1153
1369	1367	1365	1363	1361	1359	1357	1355	1353	1351	1349	1347	1345	1343
1403	1405	1407	1409	1411	1413	1415	1417	1419	1421	1423	1425	1427	
1649	1647	1645	1643	1641	1639	1637	1635	1633	1631	1629	1627	1625	

Geo Codes



Sheridan County

Legend

- Towns
- Sections
- Rivers and Streams
- Topography

Soil Classes

- Lakes and Ponds
- Excessively drained sandy soils formed in alluvium in valleys and eolian sand on uplands in sandhills
- Excessively drained sandy soils formed in eolian sands on uplands in sandhills
- Moderately well drained silty soils on uplands and in depressions formed in loess
- Well drained silty soils formed in loess on uplands
- Well drained silty soils formed in loess and alluvium on stream terraces
- Well to somewhat excessively drained loamy soils formed in weathered sandstone and eolian material on uplands
- Somewhat poorly drained soils formed in alluvium on bottom lands
- Moderately well drained silty soils with clayey subsoils on uplands