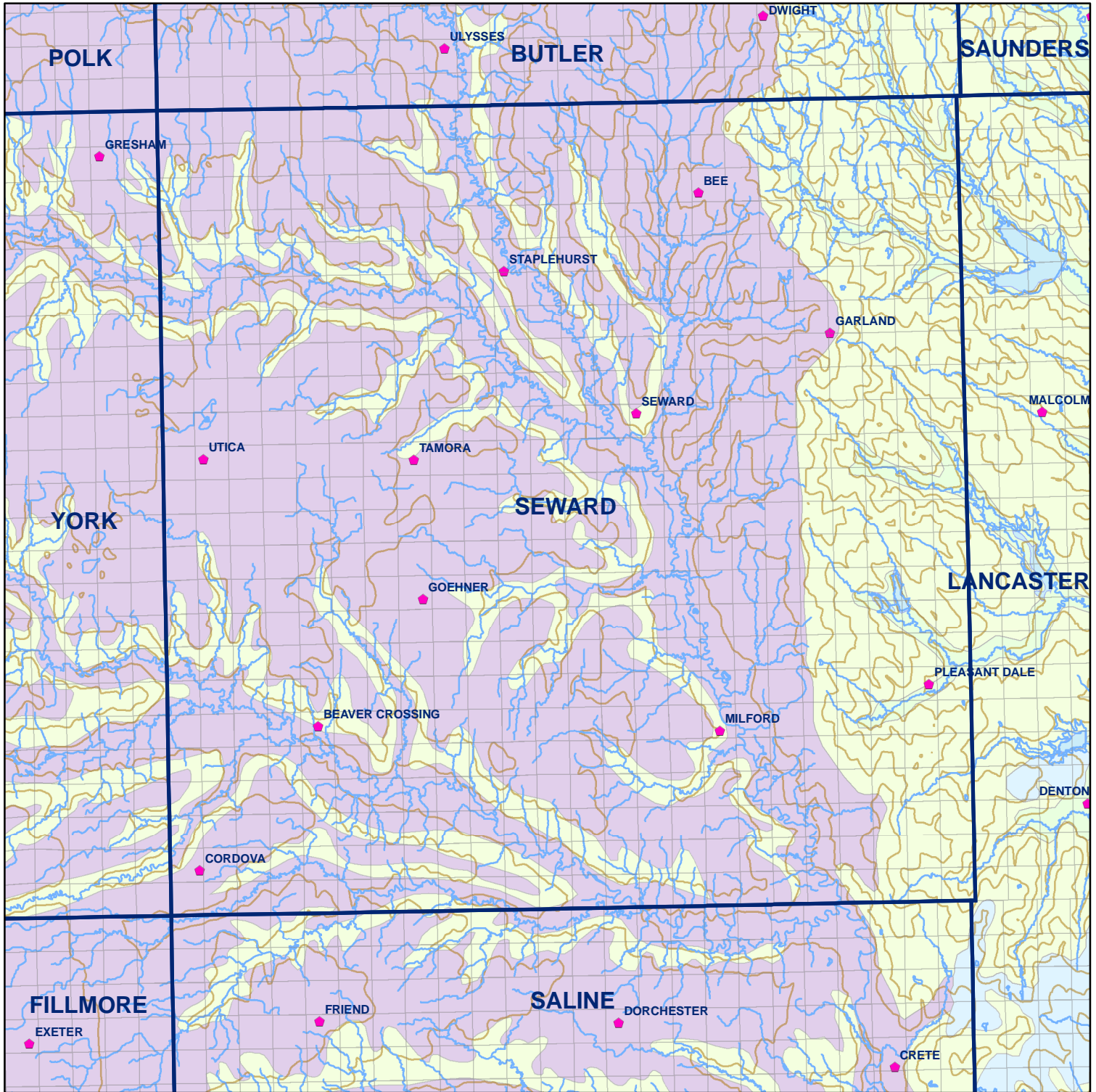


● Registered Wells > 500 GPM

2997	2995	2993	2991	2989	2987
3231	3233	3235	3237	3239	3241
3293	3291	3289	3287	3285	3283
3455	3457	3459	3461	3463	3465
3517	3515	3513	3511	3509	3507
3681	3683	3685	3687	3689	3691

Geo Codes



Seward County

Legend

Towns

Sections

Rivers and Streams

Topography

Soil Classes

Lakes and Ponds

Excessively drained sandy soils formed in alluvium in valleys and eolian sand on uplands in sandhills

Excessively drained sandy soils formed in eolian sands on uplands in sandhills

Moderately well drained silty soils on uplands and in depressions formed in loess

Well drained silty soils formed in loess on uplands

Well drained silty soils formed in loess and alluvium on stream terraces

Well to somewhat excessively drained loamy soils formed in weathered sandstone and eolian material on uplands

Somewhat poorly drained soils formed in alluvium on bottom lands

Moderately well drained silty soils with clayey subsoils on uplands