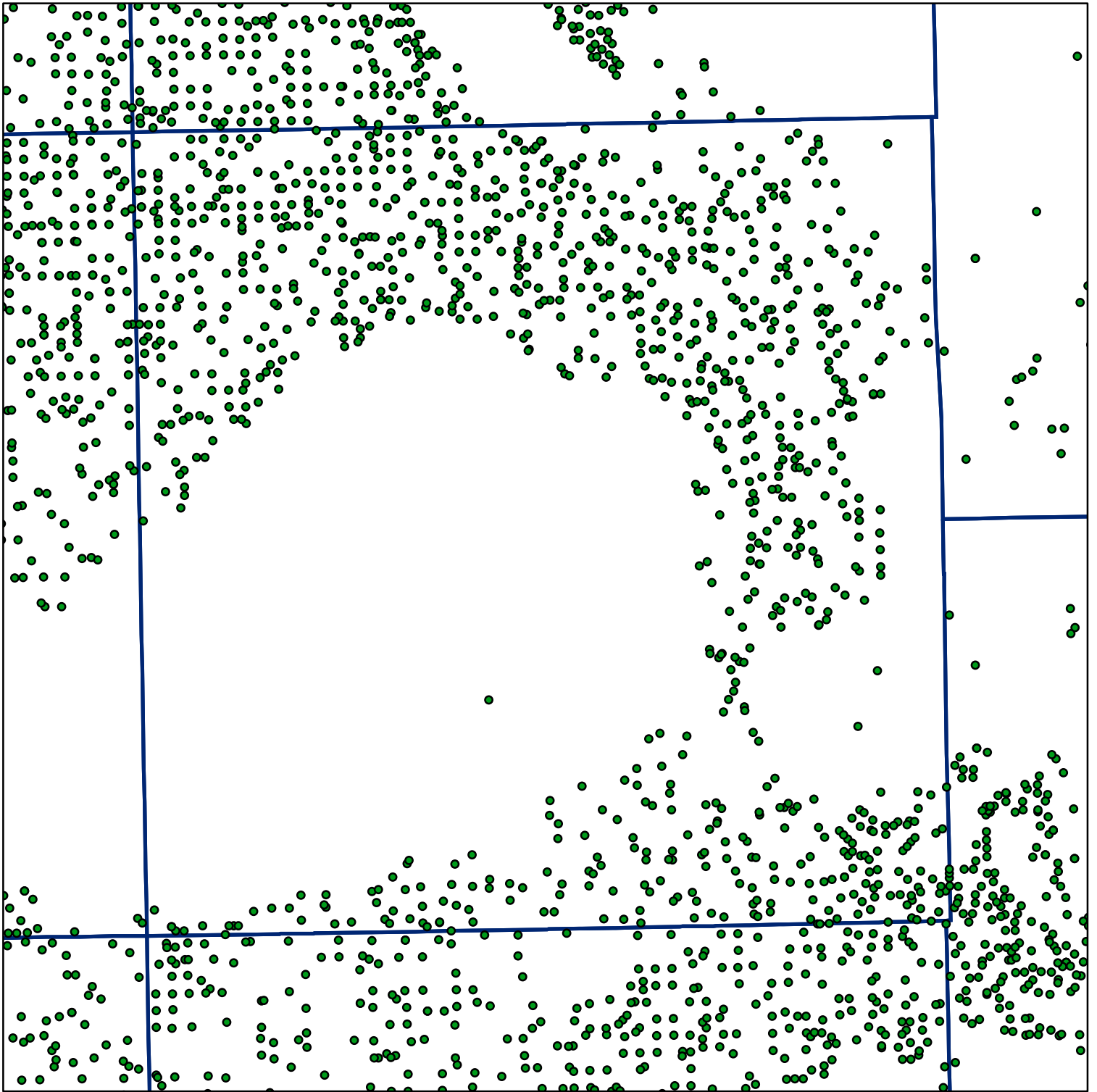


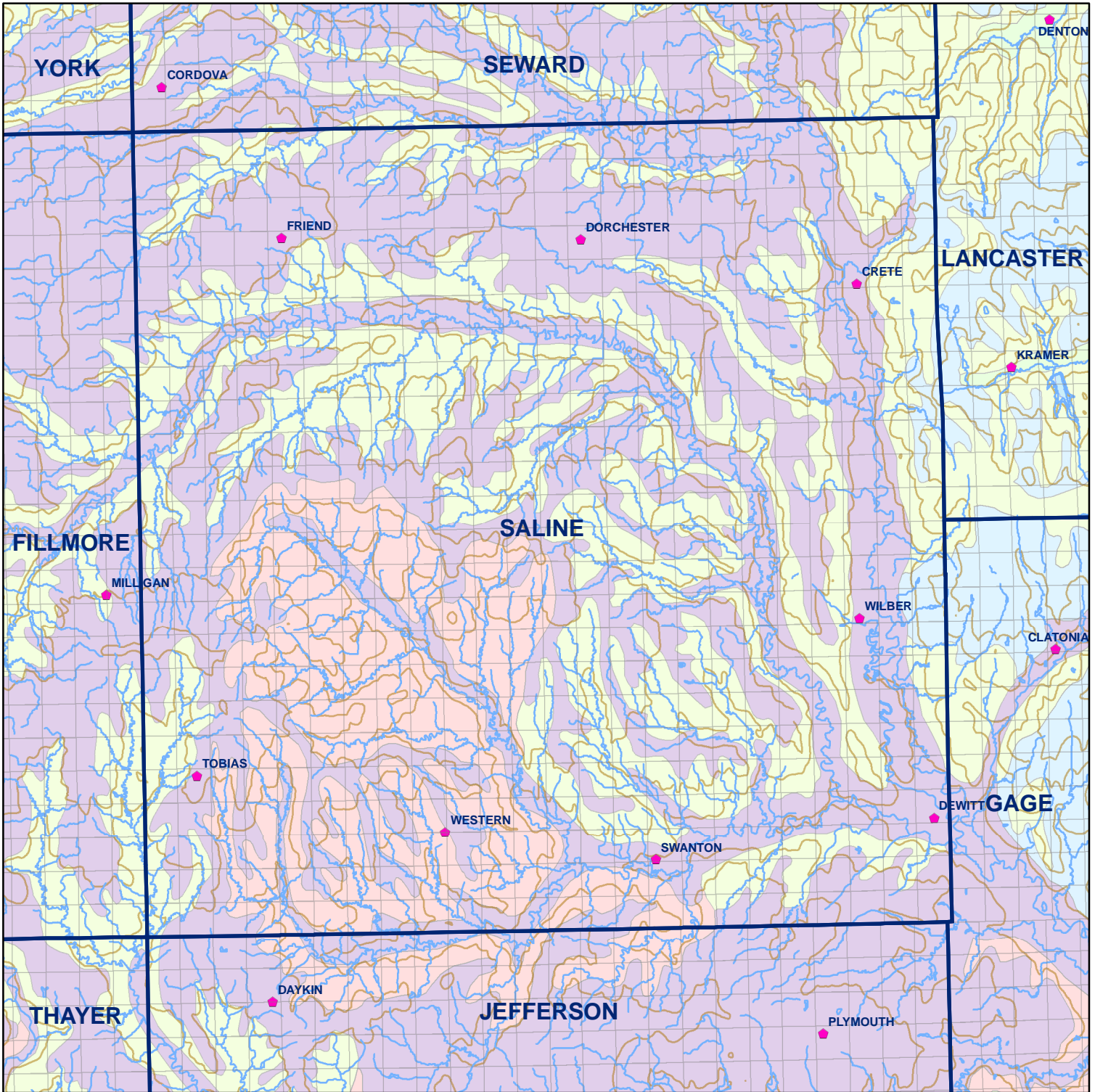
 Market Areas



● Registered Wells > 500 GPM

3517	3515	3513	3511	3509	3507
3681	3683	3685	3687	3689	3691
3749	3747	3745	3743	3741	3739
3915	3917	3919	3921	3923	3925
3985	3983	3981	3979	3977	3975
4151	4153	4155	4157	4159	4161

Geo Codes



Saline County

Legend

⊕ Towns

▭ Sections

— Rivers and Streams

— Topography

Soil Classes

— Lakes and Ponds

— Excessively drained sandy soils formed in alluvium in valleys and eolian sand on uplands in sandhills

— Excessively drained sandy soils formed in eolian sands on uplands in sandhills

— Moderately well drained silty soils on uplands and in depressions formed in loess

— Well drained silty soils formed in loess on uplands

— Well drained silty soils formed in loess and alluvium on stream terraces

— Well to somewhat excessively drained loamy soils formed in weathered sandstone and eolian material on uplands

— Somewhat poorly drained soils formed in alluvium on bottom lands

— Moderately well drained silty soils with clayey subsoils on uplands