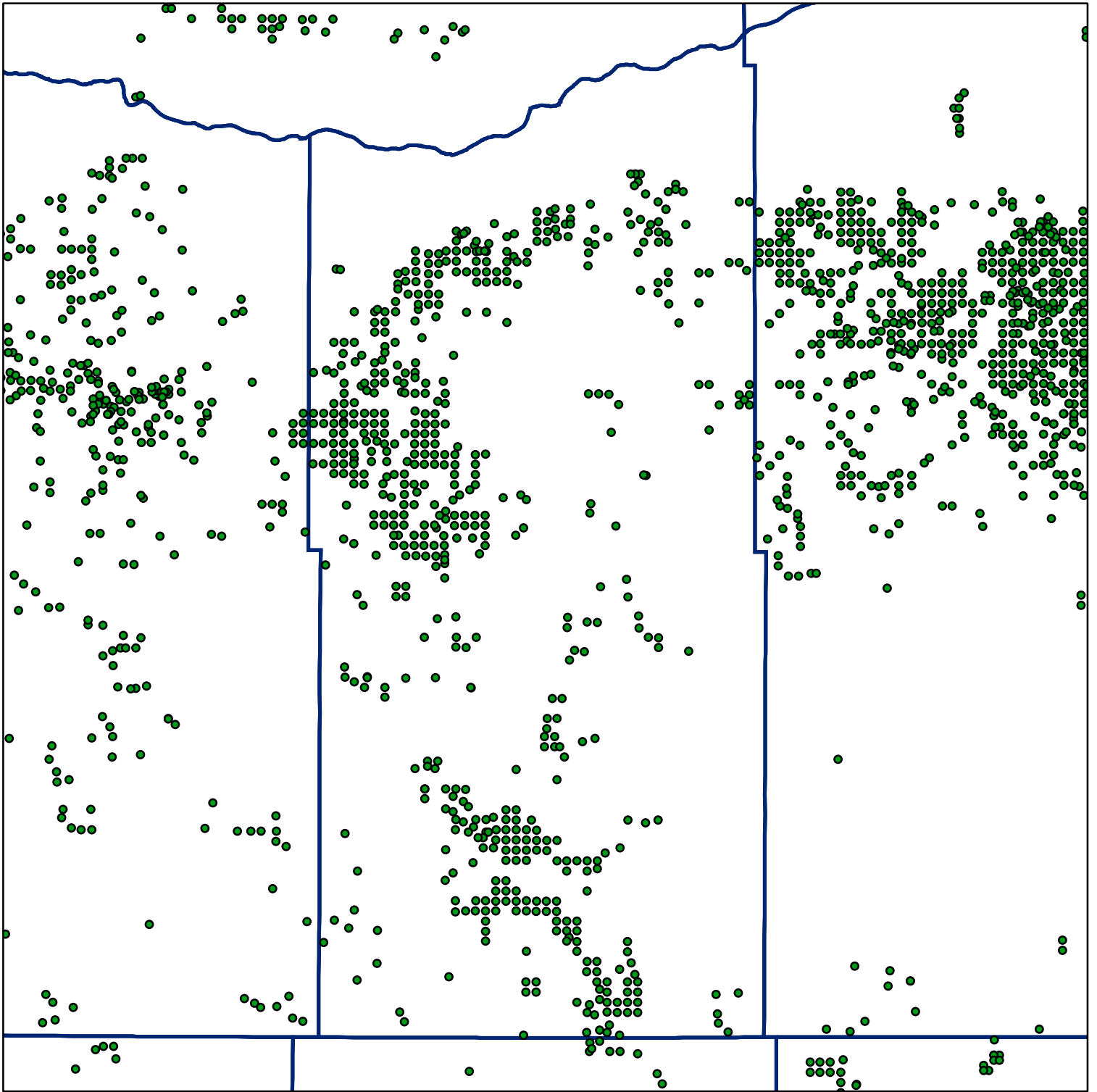


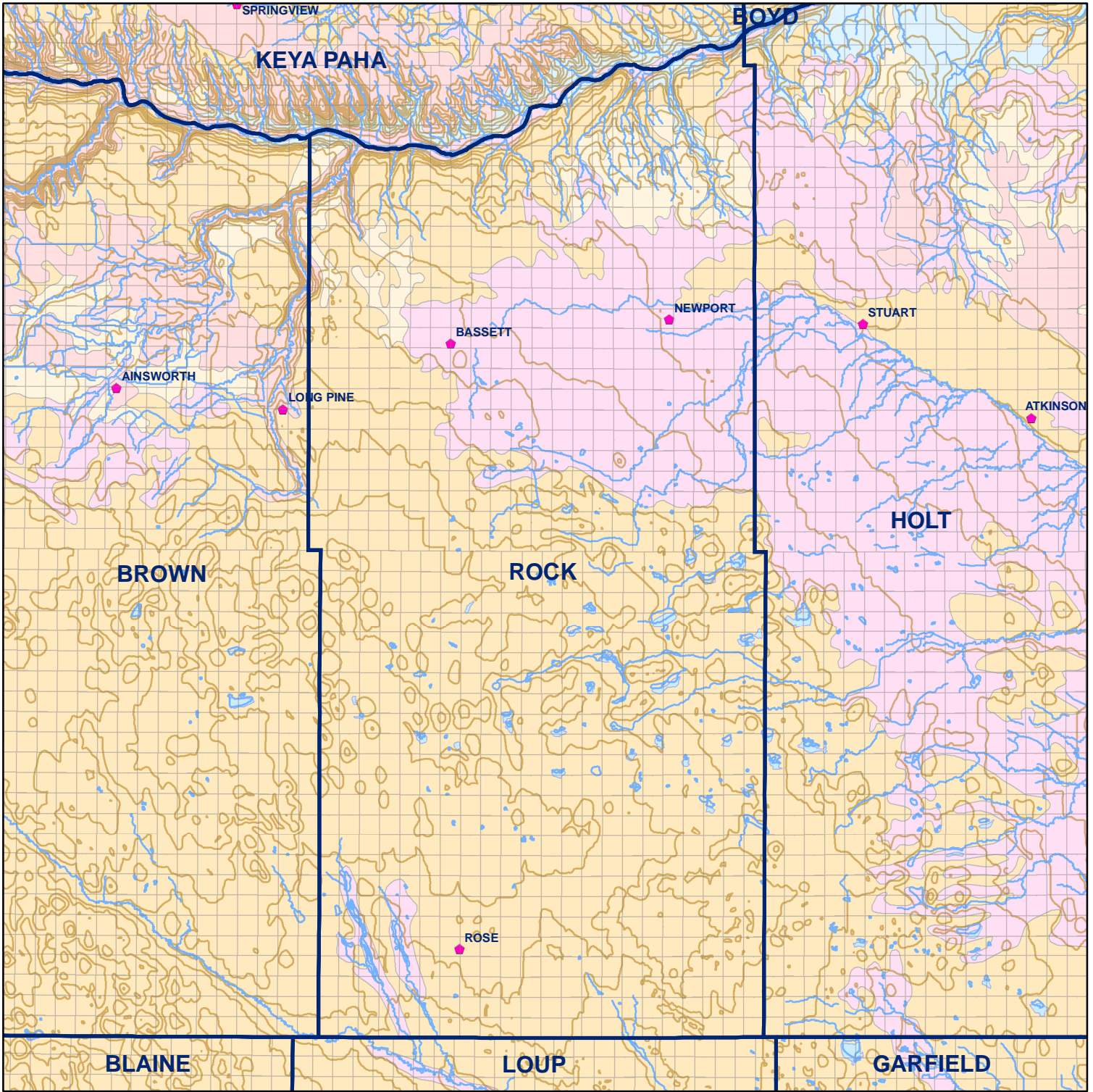
 Market Areas



● Registered Wells > 500 GPM

247	245	243	241	239	237	235	233	231	229
385	387	389	391	393	395	397	399	401	403
501	499	497	495	493	491	489	487	485	483
639	641	643	645	647	649	651	653	655	657
765	763	761	759	757	755	753	751	749	747
905	907	909	911	913	915	917	919	921	923
1039	1037	1035	1033	1031	1029	1027	1025	1023	1021
1181	1183	1185	1187	1189	1191	1193	1195	1197	1199
1315	1313	1311	1309	1307	1305	1303	1301	1299	1297
1457	1459	1461	1463	1465	1467	1469	1471	1473	1475

Geo Codes



Rock County

Legend

⌘ Towns

□ Sections

— Rivers and Streams

— Topography

Soil Classes

■ Lakes and Ponds

■ Excessively drained sandy soils formed in alluvium in valleys and eolian sand on uplands in sandhills

■ Excessively drained sandy soils formed in eolian sands on uplands in sandhills

■ Moderately well drained silty soils on uplands and in depressions formed in loess

■ Well drained silty soils formed in loess on uplands

■ Well drained silty soils formed in loess and alluvium on stream terraces

■ Well to somewhat excessively drained loamy soils formed in weathered sandstone and eolian material on uplands

■ Somewhat poorly drained soils formed in alluvium on bottom lands

■ Moderately well drained silty soils with clayey subsoils on uplands