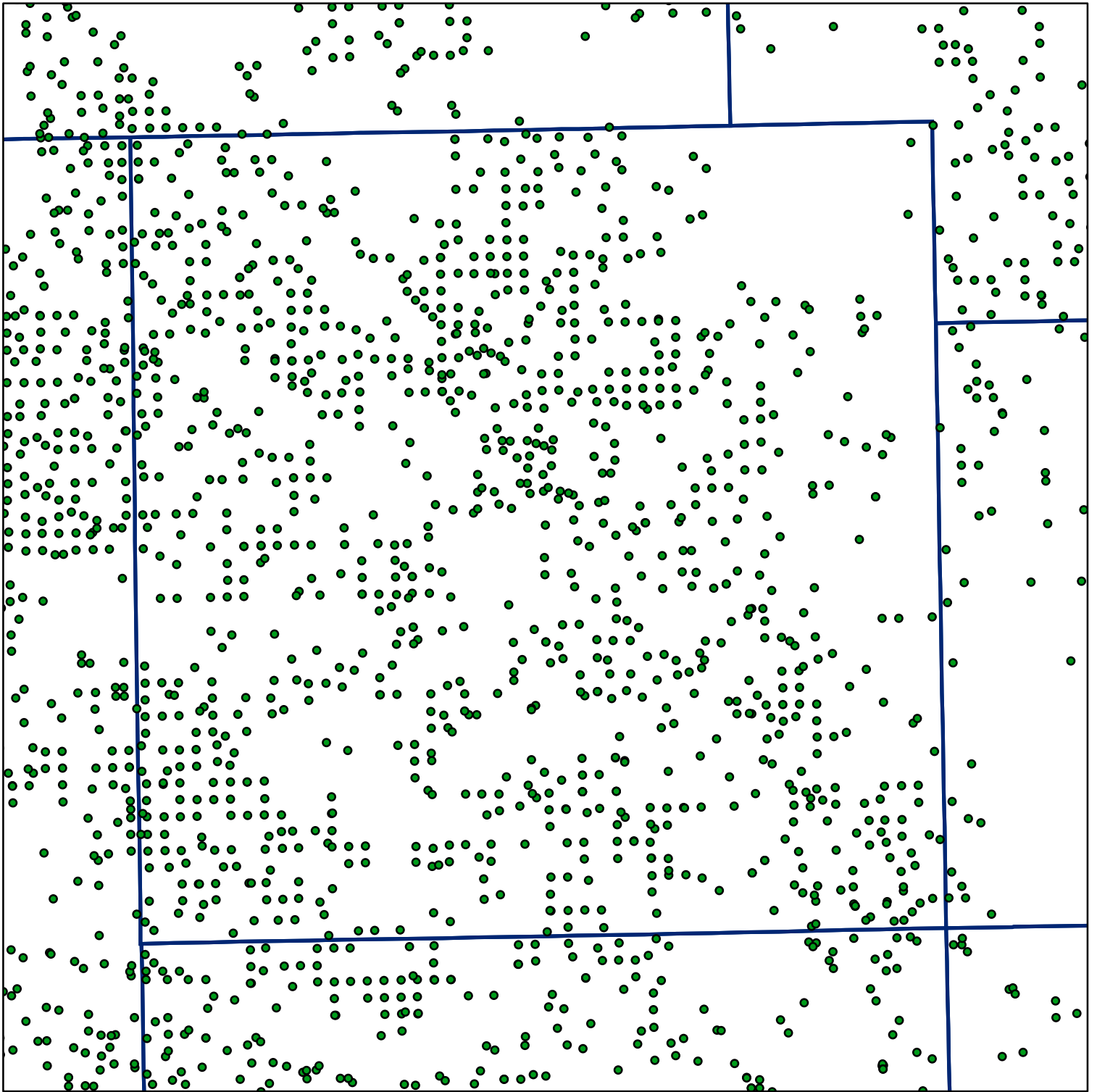


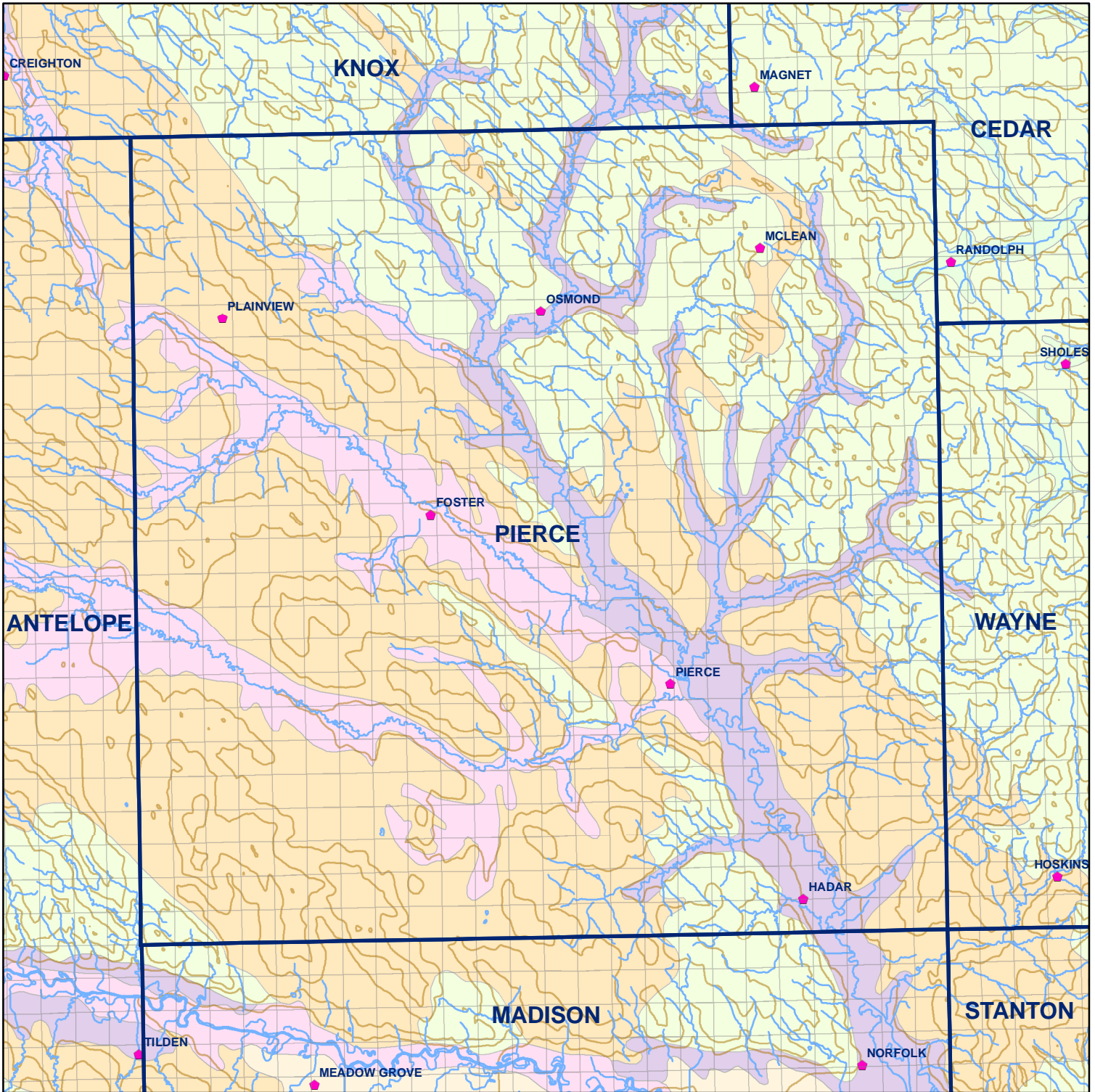
 Market Areas



● Registered Wells > 500 GPM

| | | | | | |
|------|------|------|------|------|------|
| 729 | 727 | 725 | 723 | 721 | 719 |
| 941 | 943 | 945 | 947 | 949 | 951 |
| 1003 | 1001 | 999 | 997 | 995 | 993 |
| 1217 | 1219 | 1221 | 1223 | 1225 | 1227 |
| 1279 | 1277 | 1275 | 1273 | 1271 | 1269 |
| 1493 | 1495 | 1497 | 1499 | 1501 | 1503 |

Geo Codes



Pierce County

Legend

⊕ Towns

□ Sections

— Rivers and Streams

— Topography

Soil Classes

■ Lakes and Ponds

■ Excessively drained sandy soils formed in alluvium in valleys and eolian sand on uplands in sandhills

■ Excessively drained sandy soils formed in eolian sands on uplands in sandhills

■ Moderately well drained silty soils on uplands and in depressions formed in loess

■ Well drained silty soils formed in loess on uplands

■ Well drained silty soils formed in loess and alluvium on stream terraces

■ Well to somewhat excessively drained loamy soils formed in weathered sandstone and eolian material on uplands

■ Somewhat poorly drained soils formed in alluvium on bottom lands

■ Moderately well drained silty soils with clayey subsoils on uplands