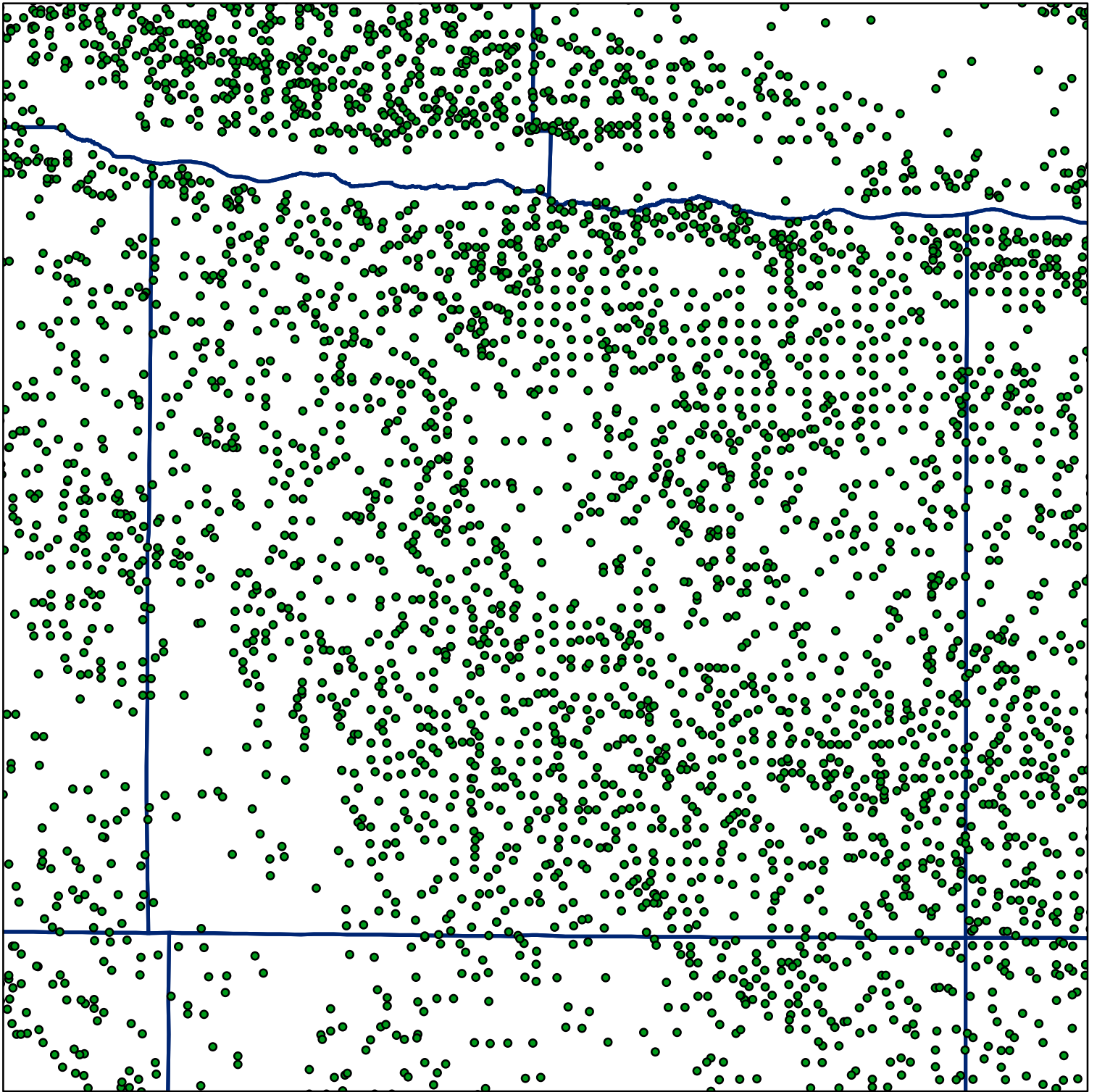


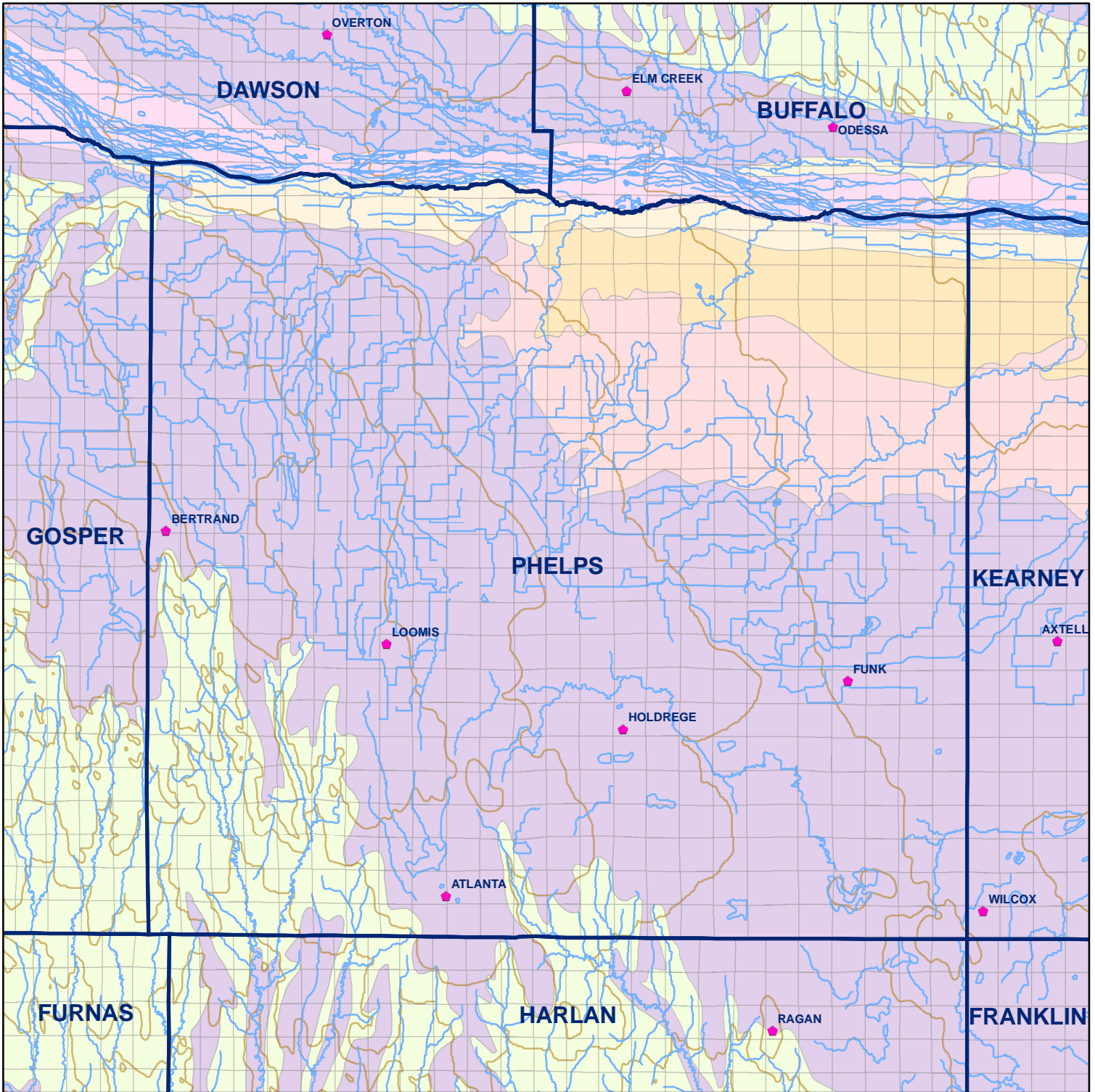
 Market Areas



● Registered Wells > 500 GPM

3557	3555	3553	3551	3549	3547
3641	3643	3645	3647	3649	3651
3789	3787	3785	3783	3781	3779
3875	3877	3879	3881	3883	3885
4025	4023	4021	4019	4017	4015
4111	4113	4115	4117	4119	4121

 Geo Codes



Phelps County

Legend

Towns

Sections

Rivers and Streams

Topography

Soil Classes

Lakes and Ponds

Excessively drained sandy soils formed in alluvium in valleys and eolian sand on uplands in sandhills

Excessively drained sandy soils formed in eolian sands on uplands in sandhills

Moderately well drained silty soils on uplands and in depressions formed in loess

Well drained silty soils formed in loess on uplands

Well drained silty soils formed in loess and alluvium on stream terraces

Well to somewhat excessively drained loamy soils formed in weathered sandstone and eolian material on uplands

Somewhat poorly drained soils formed in alluvium on bottom lands

Moderately well drained silty soils with clayey subsoils on uplands