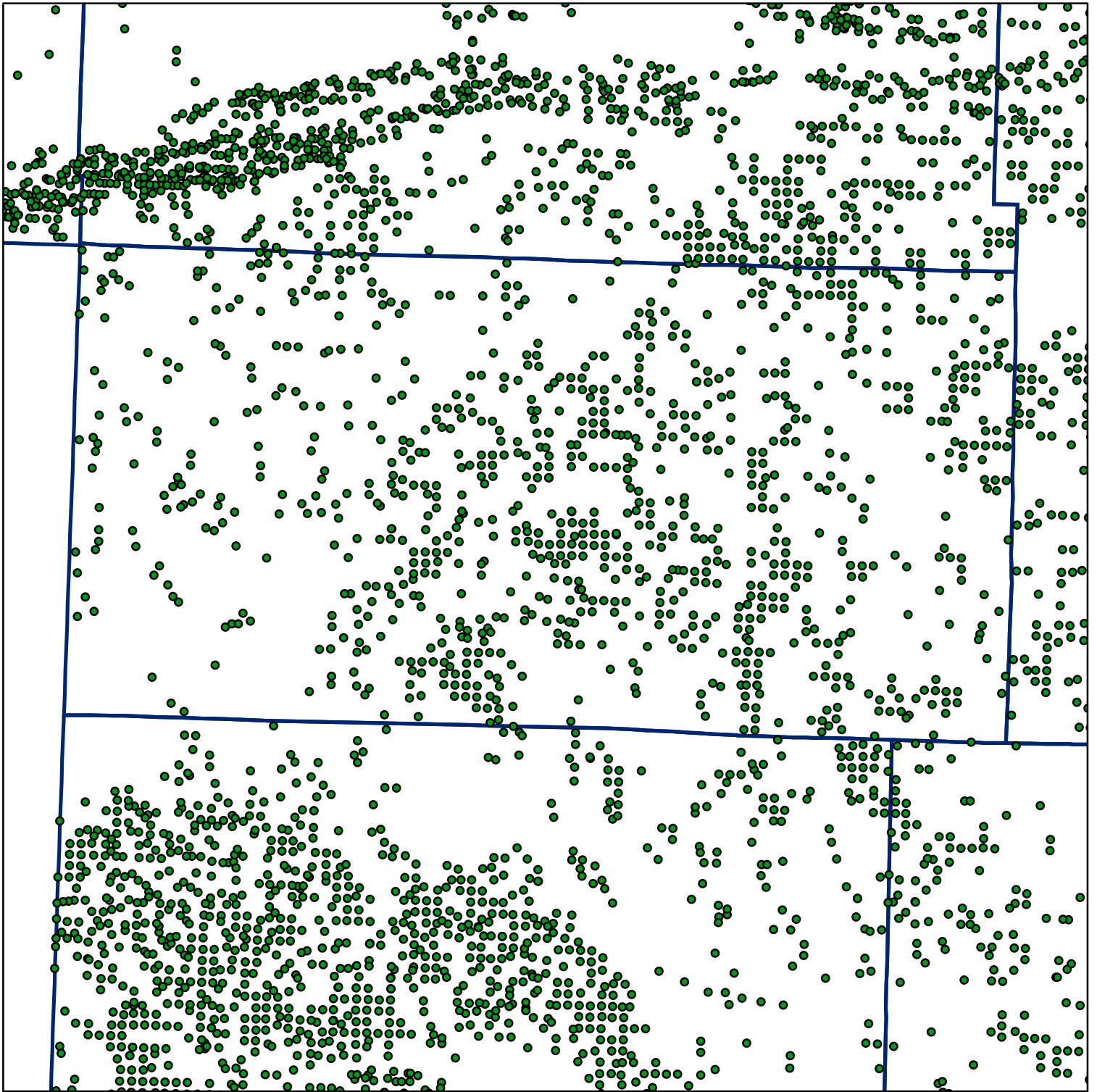


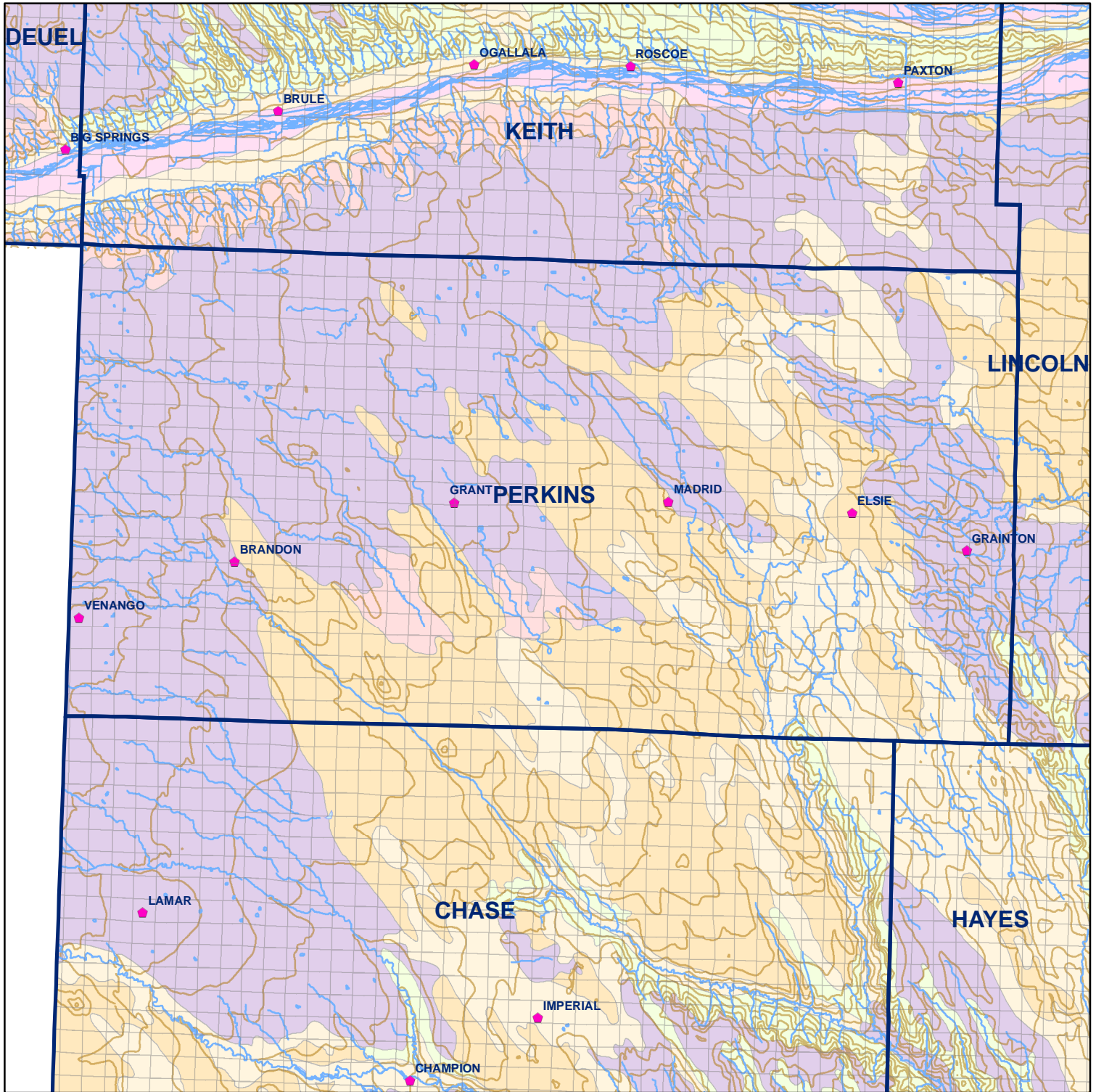
 Market Areas



● Registered Wells > 500 GPM

2853	2855	2857	2859	2861	2863	2865	2867	2869
3079	3077	3075	3073	3071	3069	3067	3065	3063
3149								
	3151	3153	3155	3157	3159	3161	3163	3165
	3373	3371	3369	3367	3365	3363	3361	3359
	3375	3377	3379	3381	3383	3385	3387	3389
	3597	3595	3593	3591	3589	3587	3585	3583
3599	3601	3603	3605	3607	3609	3611	3613	3615
3831	3829	3827	3825	3823	3821	3819	3817	3815
3833	3835	3837	3839	3841	3843	3845	3847	3849

Geo Codes



Perkins County

Legend

- ◆ Towns
- Sections
- Rivers and Streams
- Topography

Soil Classes

- Lakes and Ponds
- Excessively drained sandy soils formed in alluvium in valleys and eolian sand on uplands in sandhills
- Excessively drained sandy soils formed in eolian sands on uplands in sandhills
- Moderately well drained silty soils on uplands and in depressions formed in loess
- Well drained silty soils formed in loess on uplands
- Well drained silty soils formed in loess and alluvium on stream terraces
- Well to somewhat excessively drained loamy soils formed in weathered sandstone and eolian material on uplands
- Somewhat poorly drained soils formed in alluvium on bottom lands
- Moderately well drained silty soils with clayey subsoils on uplands