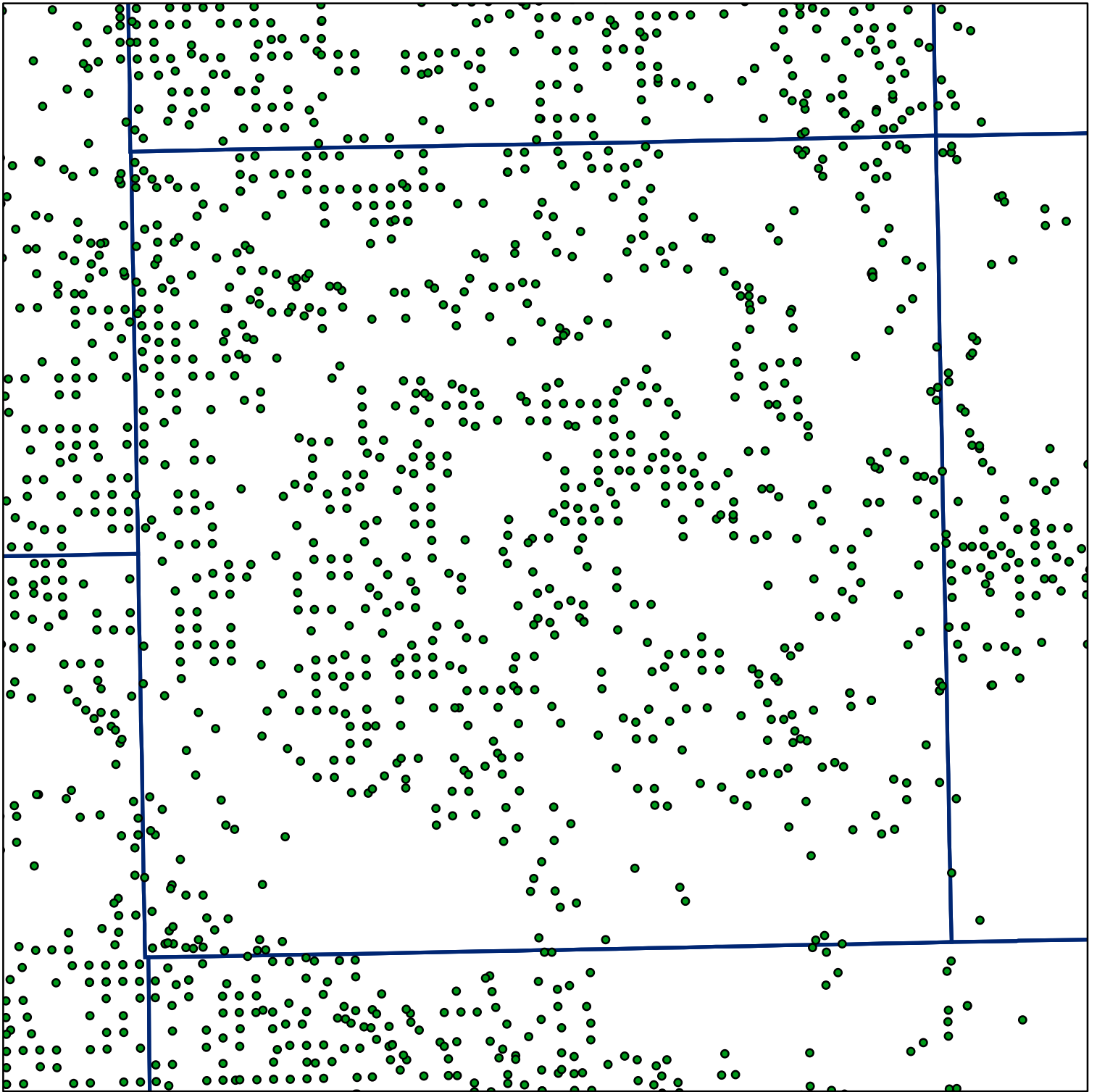


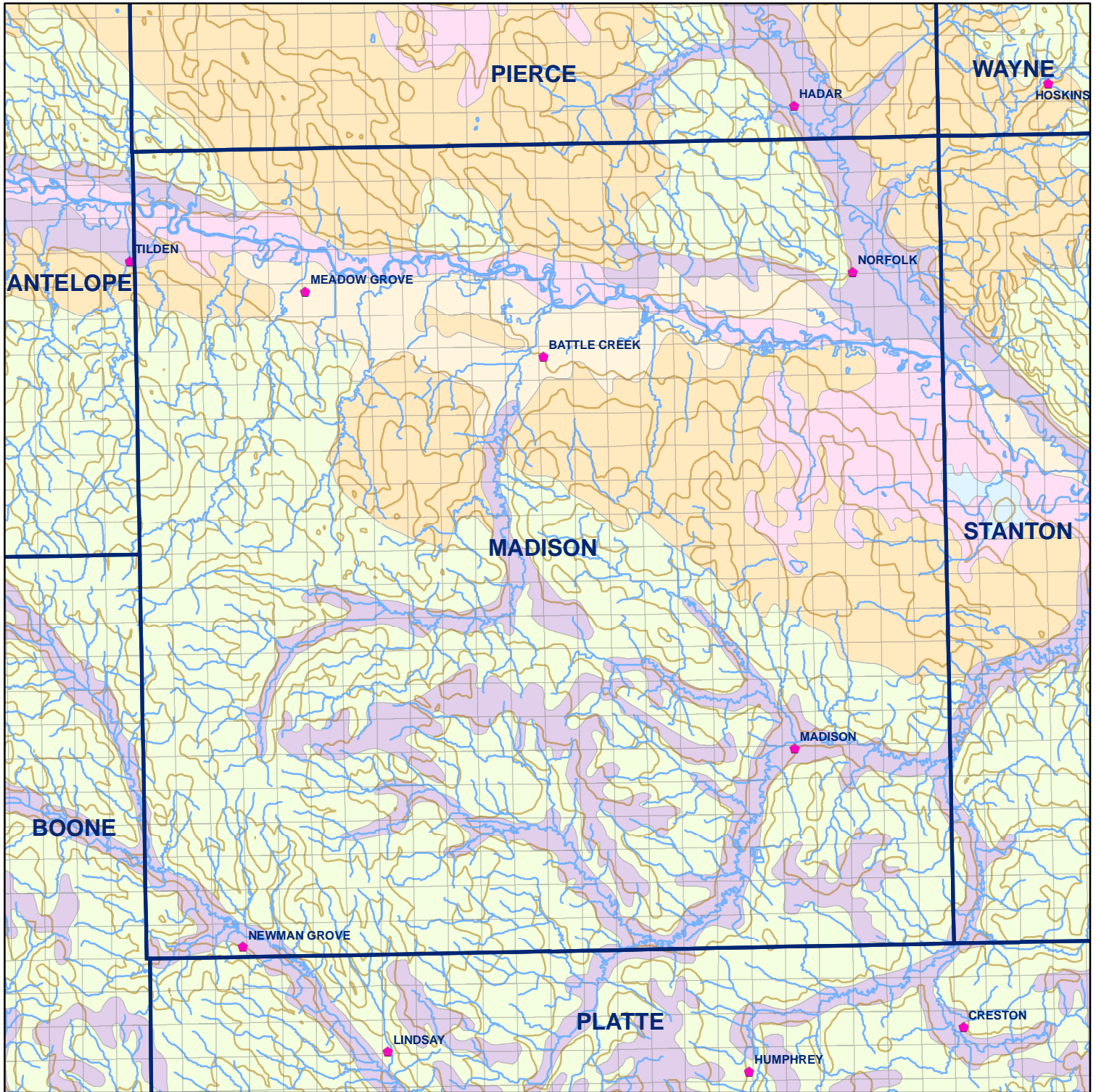
 Market Areas



● Registered Wells > 500 GPM

1279	1277	1275	1273	1271	1269
1493	1495	1497	1499	1501	1503
1559	1557	1555	1553	1551	1549
1773	1775	1777	1779	1781	1783
1843	1841	1839	1837	1835	1833
2057	2059	2061	2063	2065	2067

Geo Codes



# Madison County

## Legend


 **Towns**

 **Sections**

 **Rivers and Streams**

 **Topography**

## Soil Classes

 Lakes and Ponds

 Excessively drained sandy soils formed in alluvium in valleys and eolian sand on uplands in sandhills

 Excessively drained sandy soils formed in eolian sands on uplands in sandhills

 Moderately well drained silty soils on uplands and in depressions formed in loess

 Well drained silty soils formed in loess on uplands

 Well drained silty soils formed in loess and alluvium on stream terraces

 Well to somewhat excessively drained loamy soils formed in weathered sandstone and eolian material on uplands

 Somewhat poorly drained soils formed in alluvium on bottom lands

 Moderately well drained silty soils with clayey subsoils on uplands