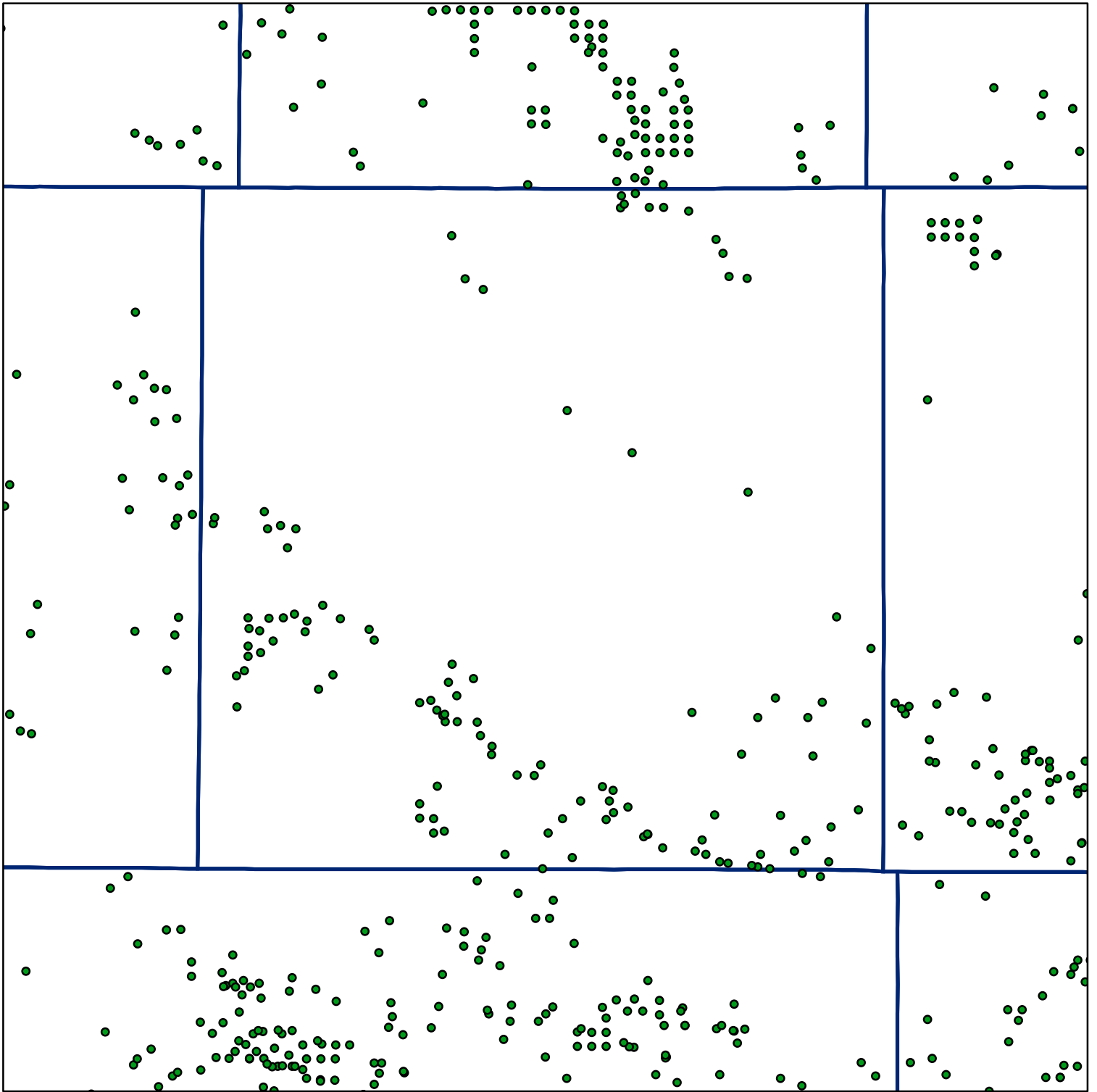


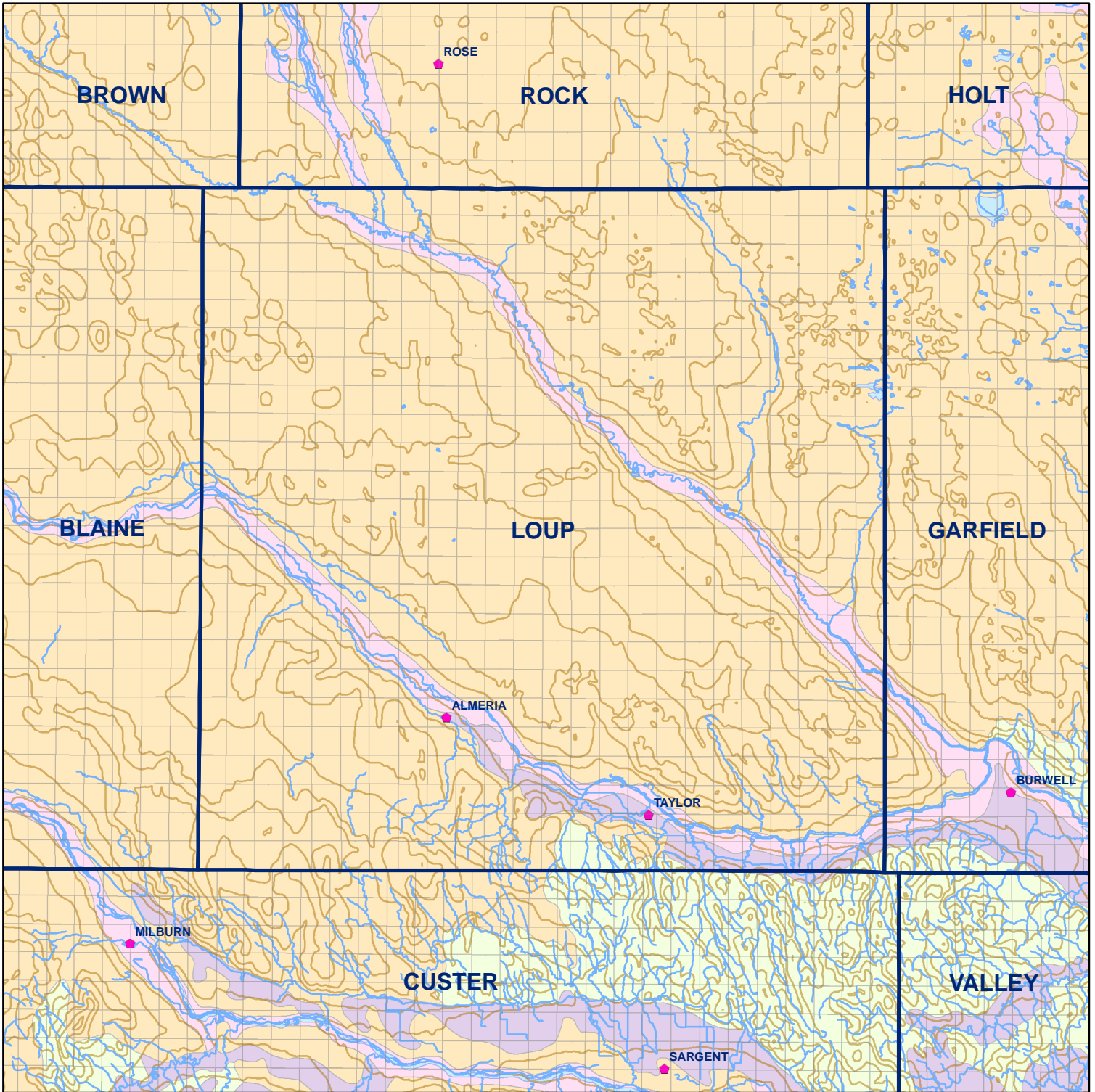
Market Areas



● Registered Wells > 500 GPM

1183	1185		1187	1189	1191	1193	1195	1197
1313	1311		1309	1307	1305	1303	1301	1299
1459	1461		1463	1465	1467	1469	1471	1473
1593	1591		1589	1587	1585	1583	1581	1579
1739	1741		1743	1745	1747	1749	1751	1753
1877	1875		1873	1871	1869	1867	1865	1863
2023	2025		2027	2029	2031	2033	2035	2037
2161	2159		2157	2155	2153	2151	2149	2147

Geo Codes



Loup County

Legend

Towns

Sections

Rivers and Streams

Topography

Soil Classes

Lakes and Ponds

Excessively drained sandy soils formed in alluvium in valleys and eolian sand on uplands in sandhills

Excessively drained sandy soils formed in eolian sands on uplands in sandhills

Moderately well drained silty soils on uplands and in depressions formed in loess

Well drained silty soils formed in loess on uplands

Well drained silty soils formed in loess and alluvium on stream terraces

Well to somewhat excessively drained loamy soils formed in weathered sandstone and eolian material on uplands

Somewhat poorly drained soils formed in alluvium on bottom lands

Moderately well drained silty soils with clayey subsoils on uplands