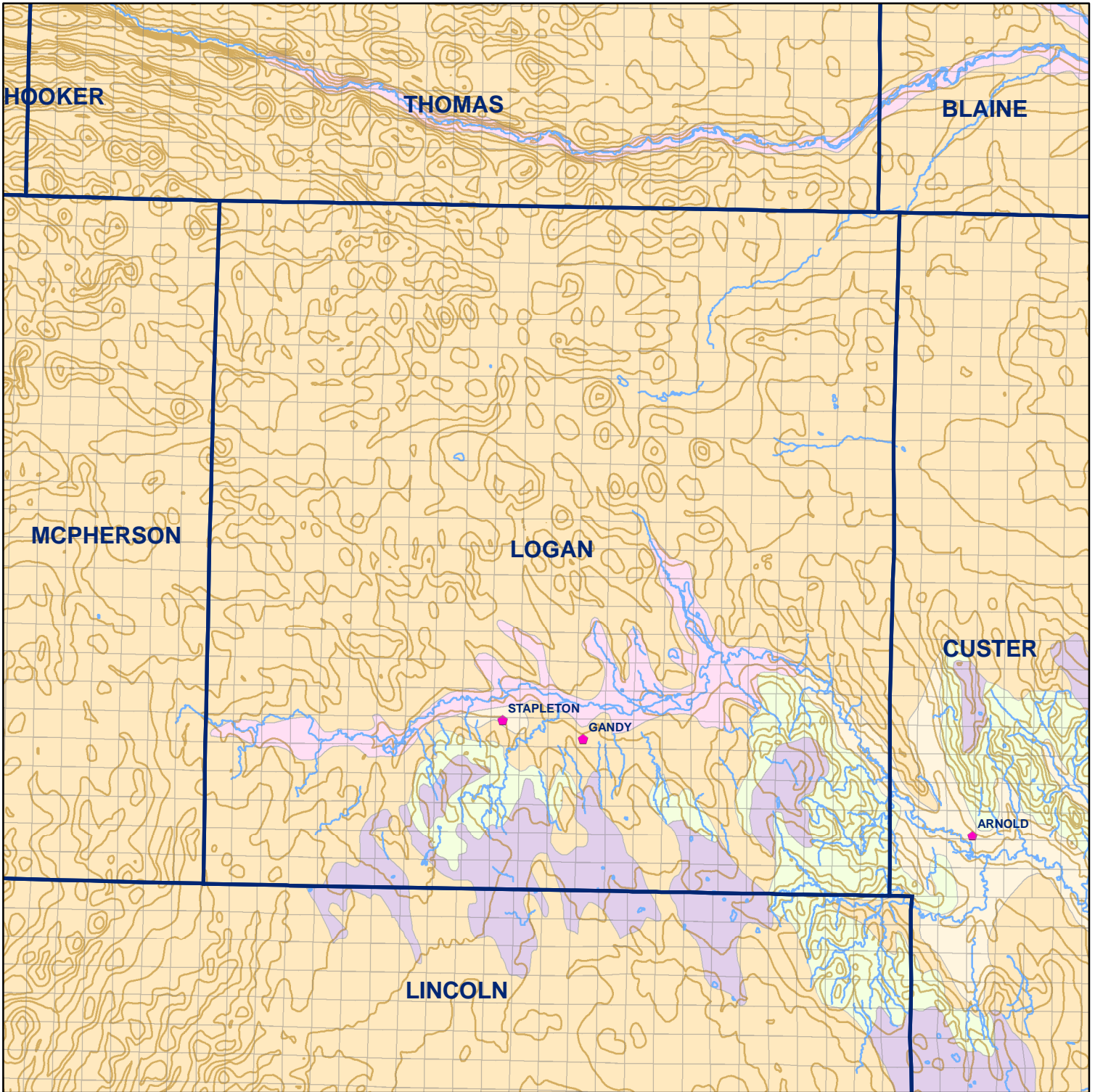


● Registered Wells > 500 GPM

1721	1723	1725	1727	1729	1731	1733	1735
1895	1893	1891	1889	1887	1885	1883	1881
2005	2007	2009	2011	2013	2015	2017	2019
2179	2177	2175	2173	2171	2169	2167	2165
2289	2291	2293	2295	2297	2299	2301	2303
2467	2465	2463	2461	2459	2457	2455	2453
2579	2581	2583	2585	2587	2589	2591	2593
2761	2759	2757	2755	2753	2751	2749	2747

Geo Codes



Logan County

Legend

Towns

Sections

Rivers and Streams

Topography

Soil Classes

- Lakes and Ponds
- Excessively drained sandy soils formed in alluvium in valleys and eolian sand on uplands in sandhills
- Excessively drained sandy soils formed in eolian sands on uplands in sandhills
- Moderately well drained silty soils on uplands and in depressions formed in loess
- Well drained silty soils formed in loess on uplands
- Well drained silty soils formed in loess and alluvium on stream terraces
- Well to somewhat excessively drained loamy soils formed in weathered sandstone and eolian material on uplands
- Somewhat poorly drained soils formed in alluvium on bottom lands
- Moderately well drained silty soils with clayey subsoils on uplands