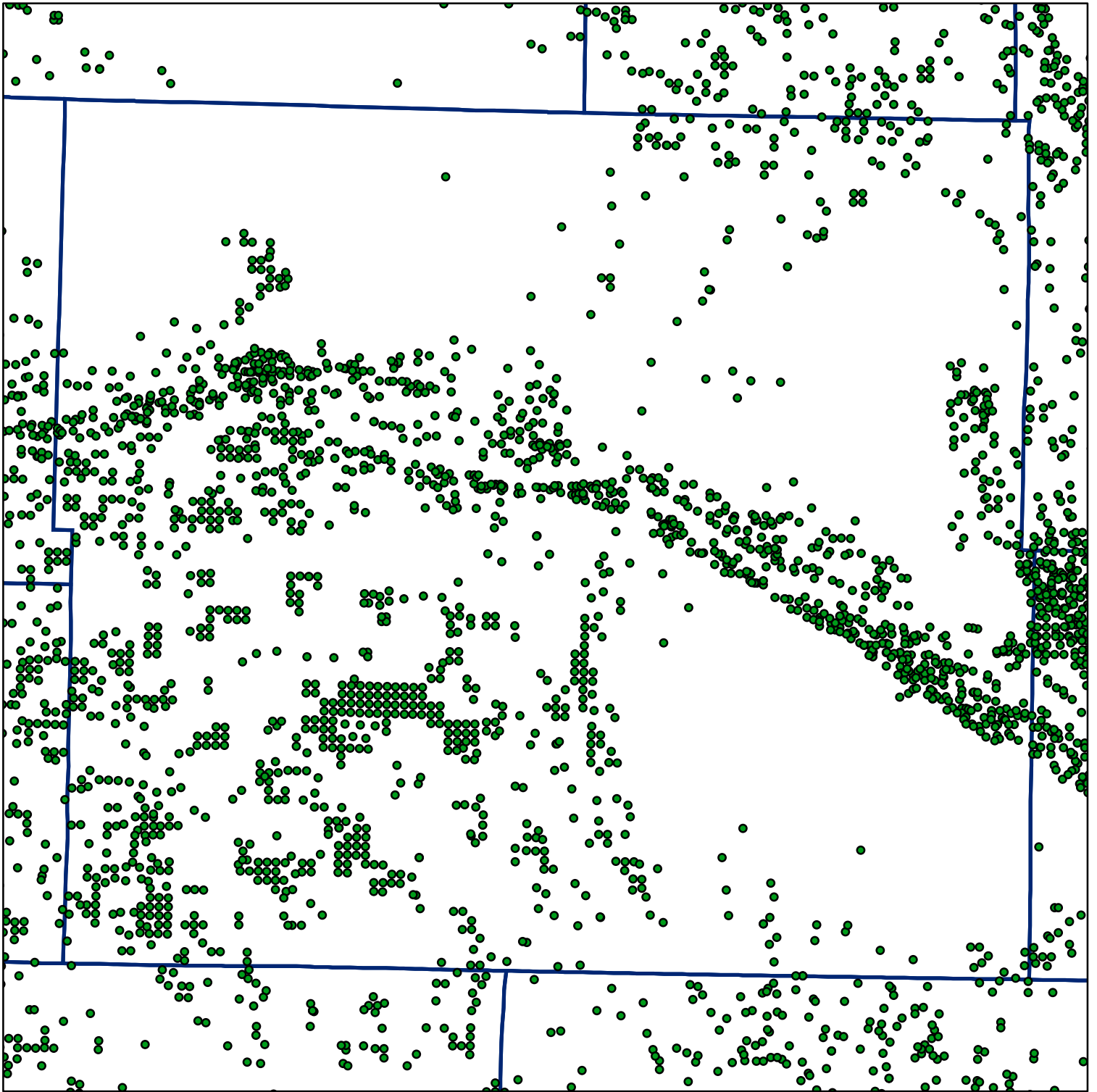


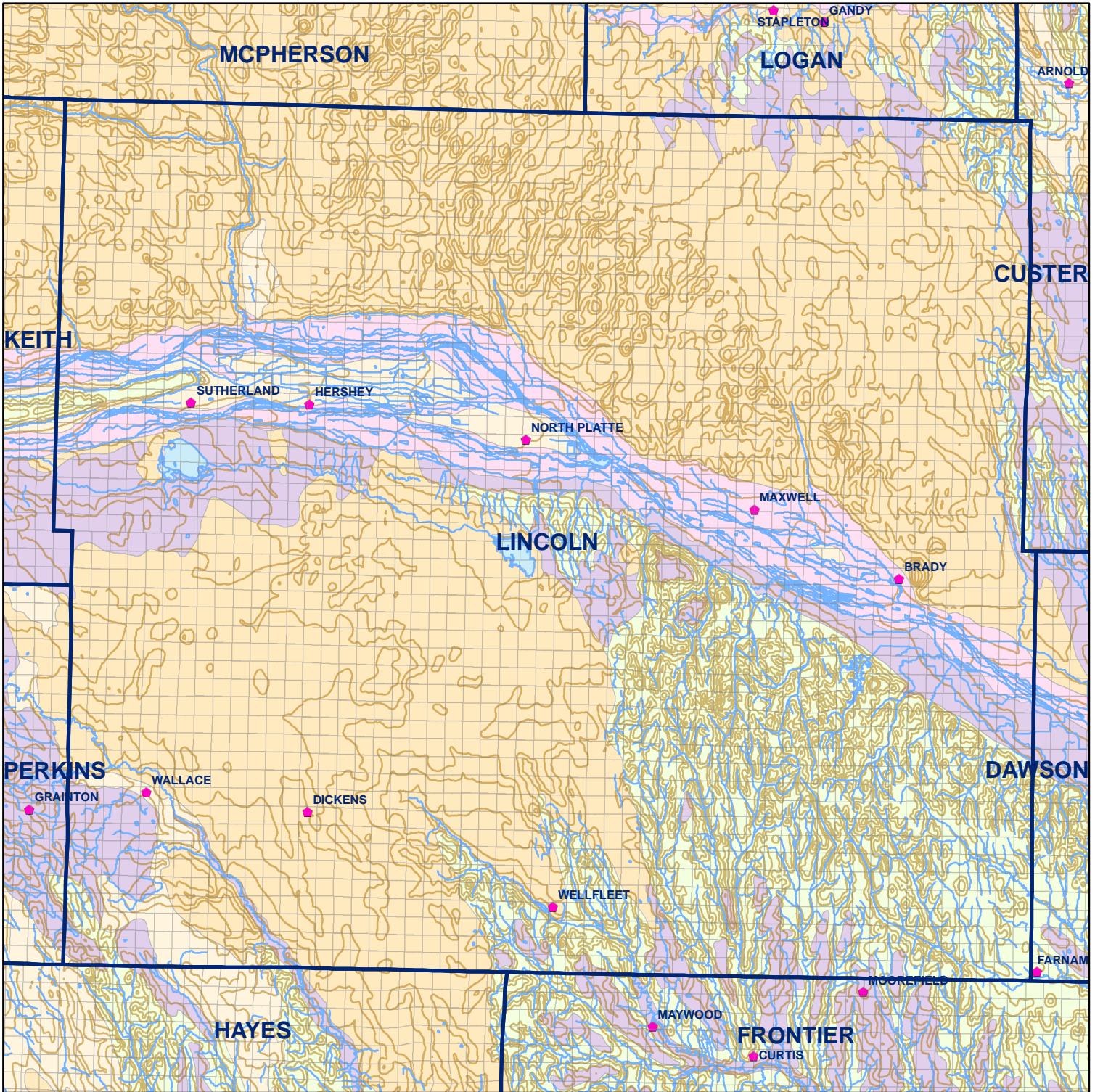
Market Areas



● Registered Wells > 500 GPM

2475	2473	2471	2469	2467	2465	2463	2461	2459	2457	2455
2571	2573	2575	2577	2579	2581	2583	2585	2587	2589	2591
2769	2767	2765	2763	2761	2759	2757	2755	2753	2751	2749
2867	2869	2871	2873	2875	2877	2879	2881	2883	2885	2887
3065	3063	3061	3059	3057	3055	3053	3051	3049	3047	3045
3163	3165	3167	3169	3171	3173	3175	3177	3179	3181	3183
3361	3359	3357	3355	3353	3351	3349	3347	3345	3343	3341
3387	3389	3391	3393	3395	3397	3399	3401	3403	3405	3407
3585	3583	3581	3579	3577	3575	3573	3571	3569	3567	3565
3613	3615	3617	3619	3621	3623	3625	3627	3629	3631	3633
3817	3815	3813	3811	3809	3807	3805	3803	3801	3799	3797

Geo Codes



# Lincoln County

## Legend

⌘ Towns

▭ Sections

— Rivers and Streams

— Topography

## Soil Classes

— Lakes and Ponds

— Excessively drained sandy soils formed in alluvium in valleys and eolian sand on uplands in sandhills

— Excessively drained sandy soils formed in eolian sands on uplands in sandhills

— Moderately well drained silty soils on uplands and in depressions formed in loess

— Well drained silty soils formed in loess on uplands

— Well drained silty soils formed in loess and alluvium on stream terraces

— Well to somewhat excessively drained loamy soils formed in weathered sandstone and eolian material on uplands

— Somewhat poorly drained soils formed in alluvium on bottom lands

— Moderately well drained silty soils with clayey subsoils on uplands