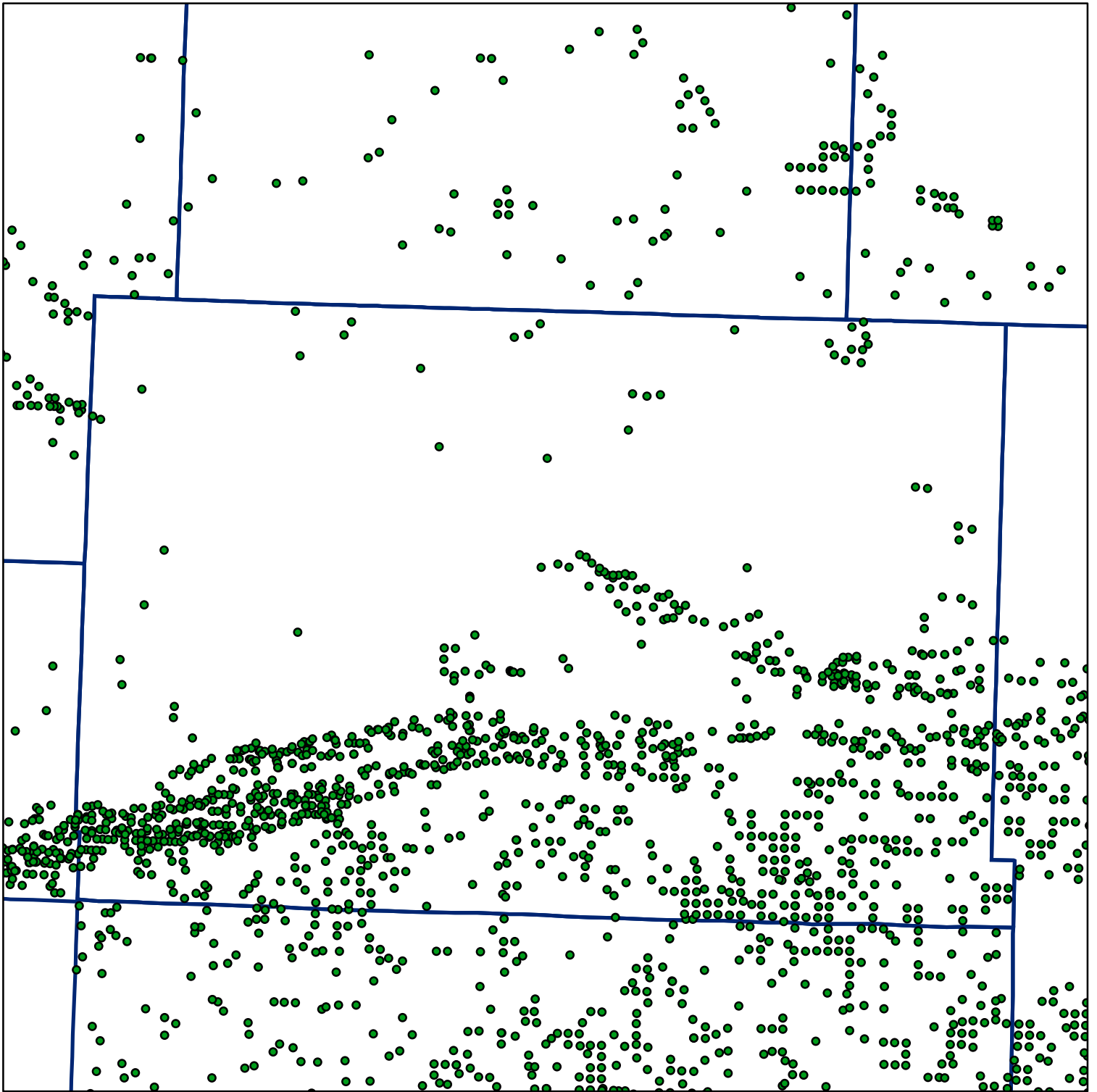


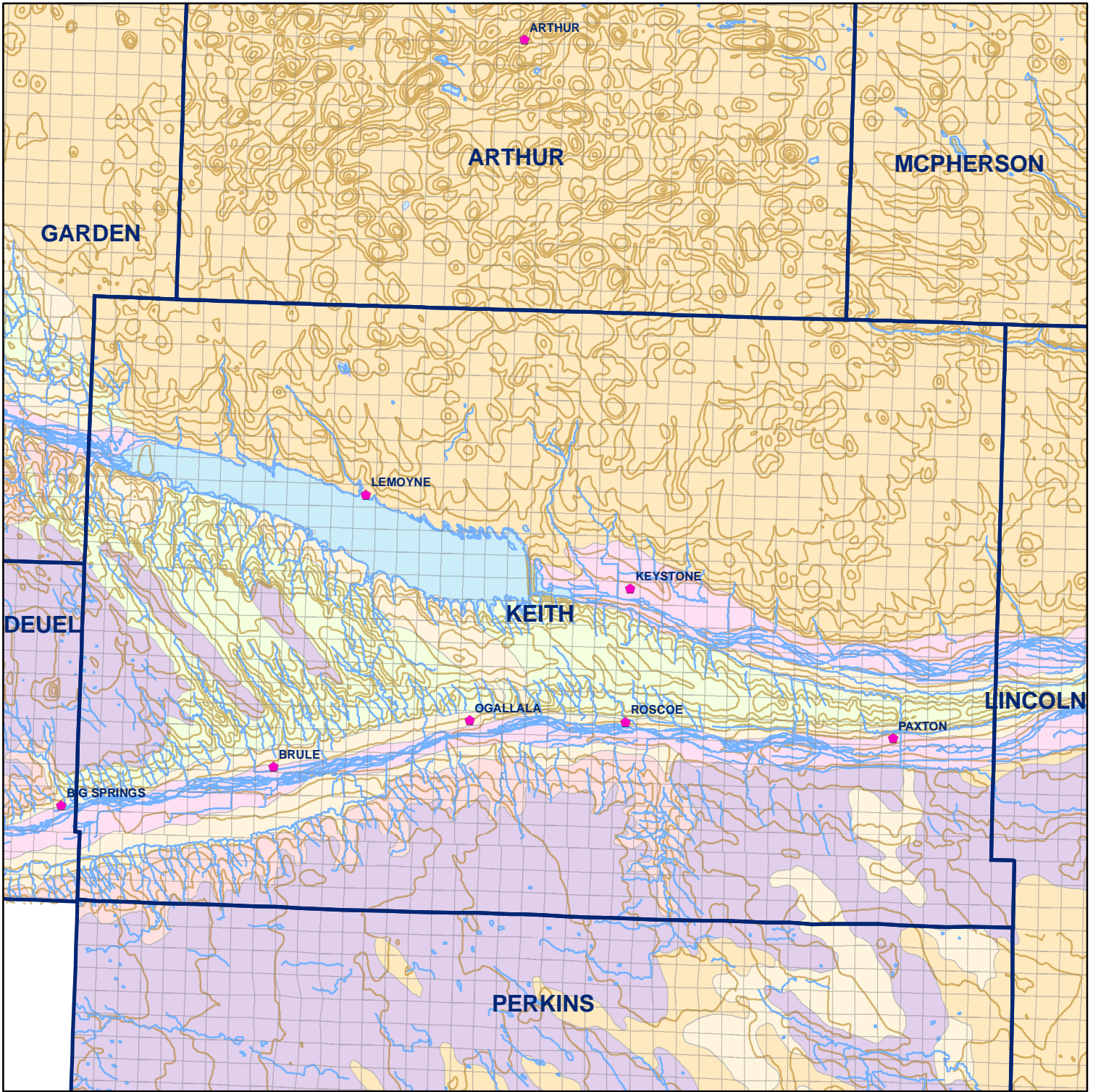
Market Areas



● Registered Wells > 500 GPM

2201	2199	2197	2195	2193	2191	2189	2187	2185
2267	2269	2271	2273	2275	2277	2279	2281	2283
2489	2487	2485	2483	2481	2479	2477	2475	2473
2557	2559	2561	2563	2565	2567	2569	2571	2573
2783	2781	2779	2777	2775	2773	2771	2769	2767
2853	2855	2857	2859	2861	2863	2865	2867	2869
3079	3077	3075	3073	3071	3069	3067	3065	3063
3149								
	3151	3153	3155	3157	3159	3161	3163	3165
	3373	3371	3369	3367	3365	3363	3361	3359

Geo Codes



Keith County

Legend

Towns

Sections

Rivers and Streams

Topography

Soil Classes

Lakes and Ponds

Excessively drained sandy soils formed in alluvium in valleys and eolian sand on uplands in sandhills

Excessively drained sandy soils formed in eolian sands on uplands in sandhills

Moderately well drained silty soils on uplands and in depressions formed in loess

Well drained silty soils formed in loess on uplands

Well drained silty soils formed in loess and alluvium on stream terraces

Well to somewhat excessively drained loamy soils formed in weathered sandstone and eolian material on uplands

Somewhat poorly drained soils formed in alluvium on bottom lands

Moderately well drained silty soils with clayey subsoils on uplands