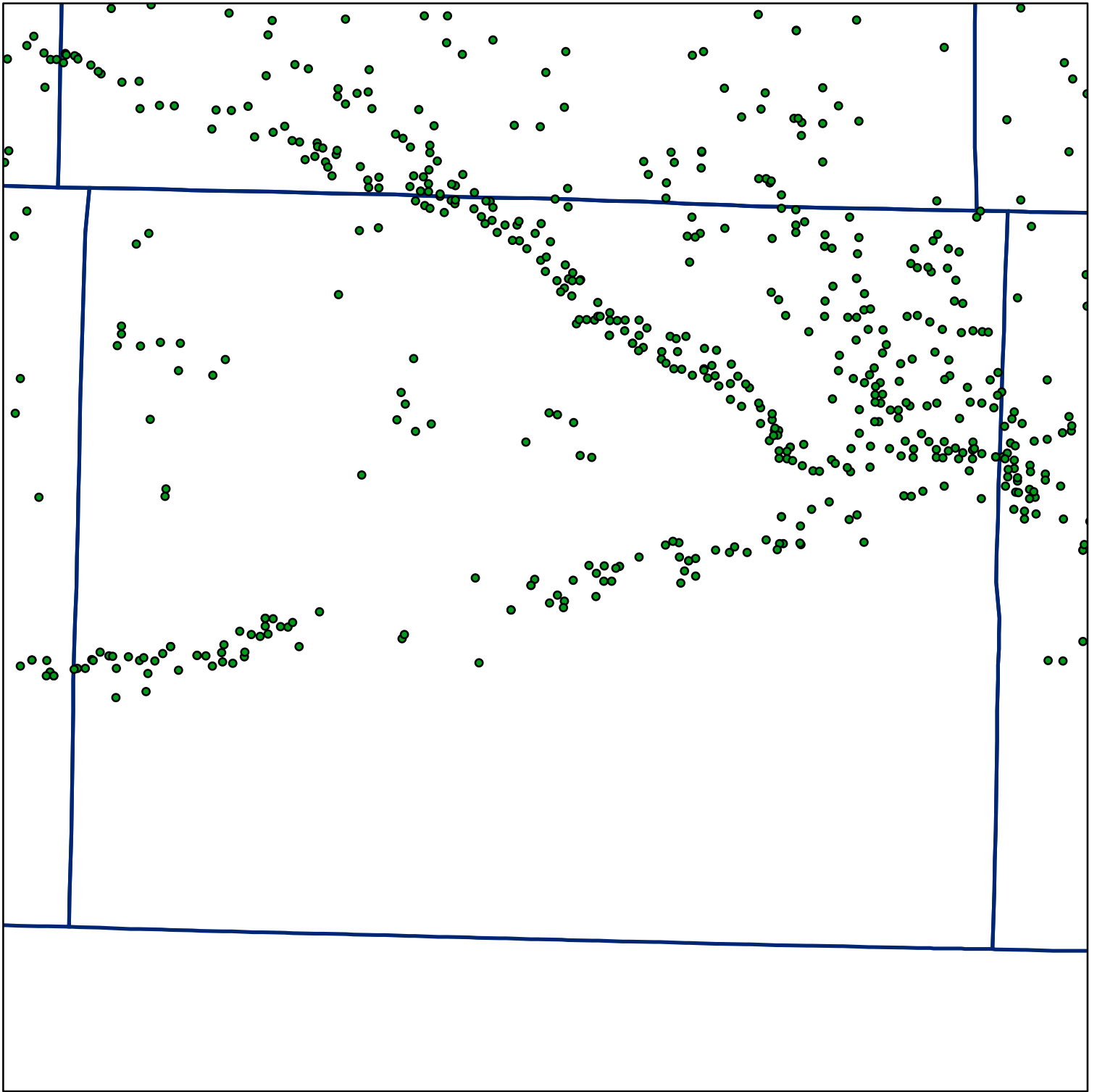


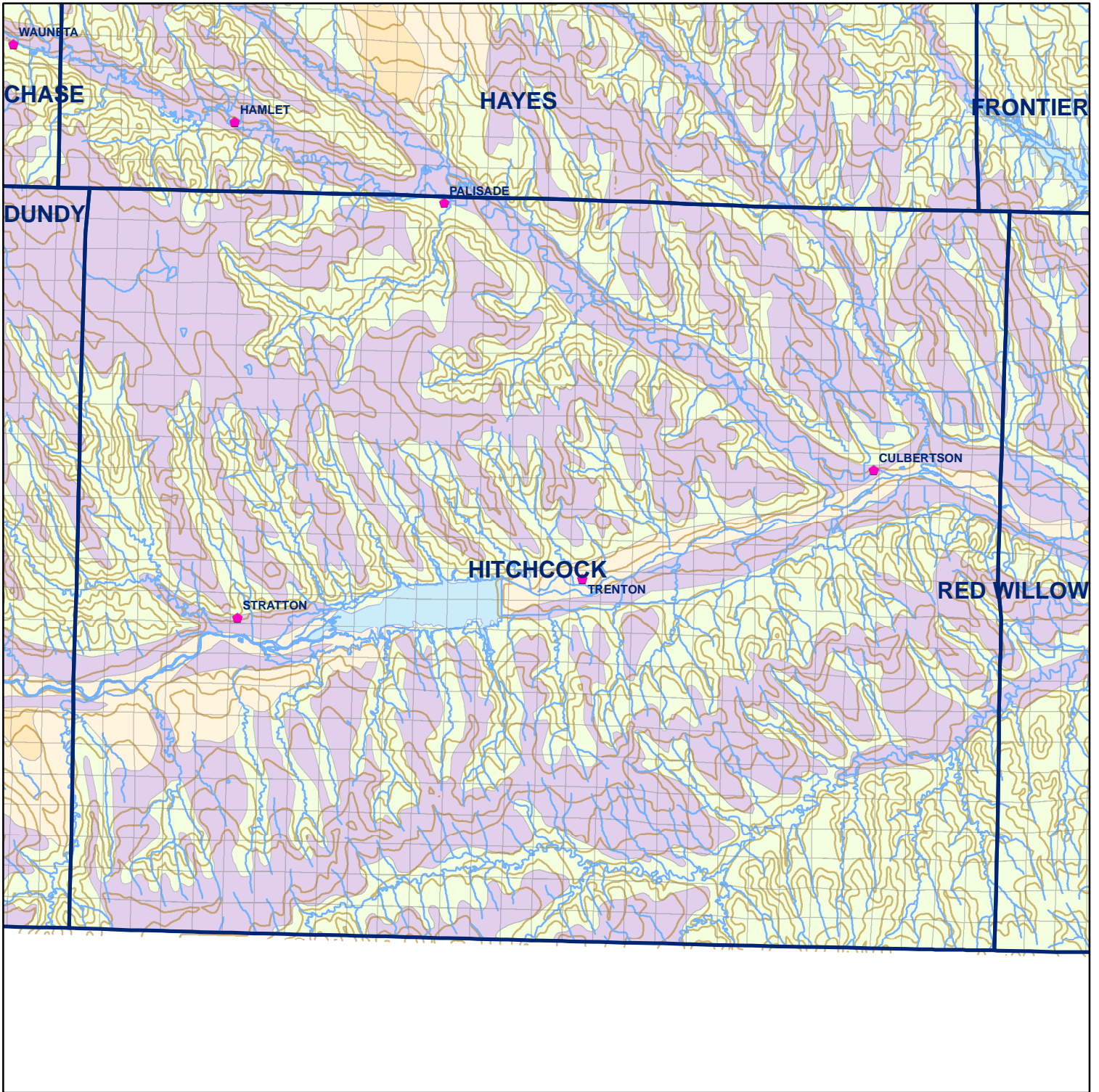
 Market Areas



● Registered Wells > 500 GPM

	3847	3849	3851	3853	3855	3857
4055	4053	4051	4049	4047	4045	4043
4081	4083	4085	4087	4089	4091	4093
4295	4293	4291	4289	4287	4285	4283
4321	4323	4325	4327	4329	4331	4333
4541	4539	4537	4535	4533	4531	4529

Geo Codes



# Hitchcock County

## Legend

⌘ Towns

▭ Sections

— Rivers and Streams

— Topography

## Soil Classes

▭ Lakes and Ponds

▭ Excessively drained sandy soils formed in alluvium in valleys and eolian sand on uplands in sandhills

▭ Excessively drained sandy soils formed in eolian sands on uplands in sandhills

▭ Moderately well drained silty soils on uplands and in depressions formed in loess

▭ Well drained silty soils formed in loess on uplands

▭ Well drained silty soils formed in loess and alluvium on stream terraces

▭ Well to somewhat excessively drained loamy soils formed in weathered sandstone and eolian material on uplands

▭ Somewhat poorly drained soils formed in alluvium on bottom lands

▭ Moderately well drained silty soils with clayey subsoils on uplands