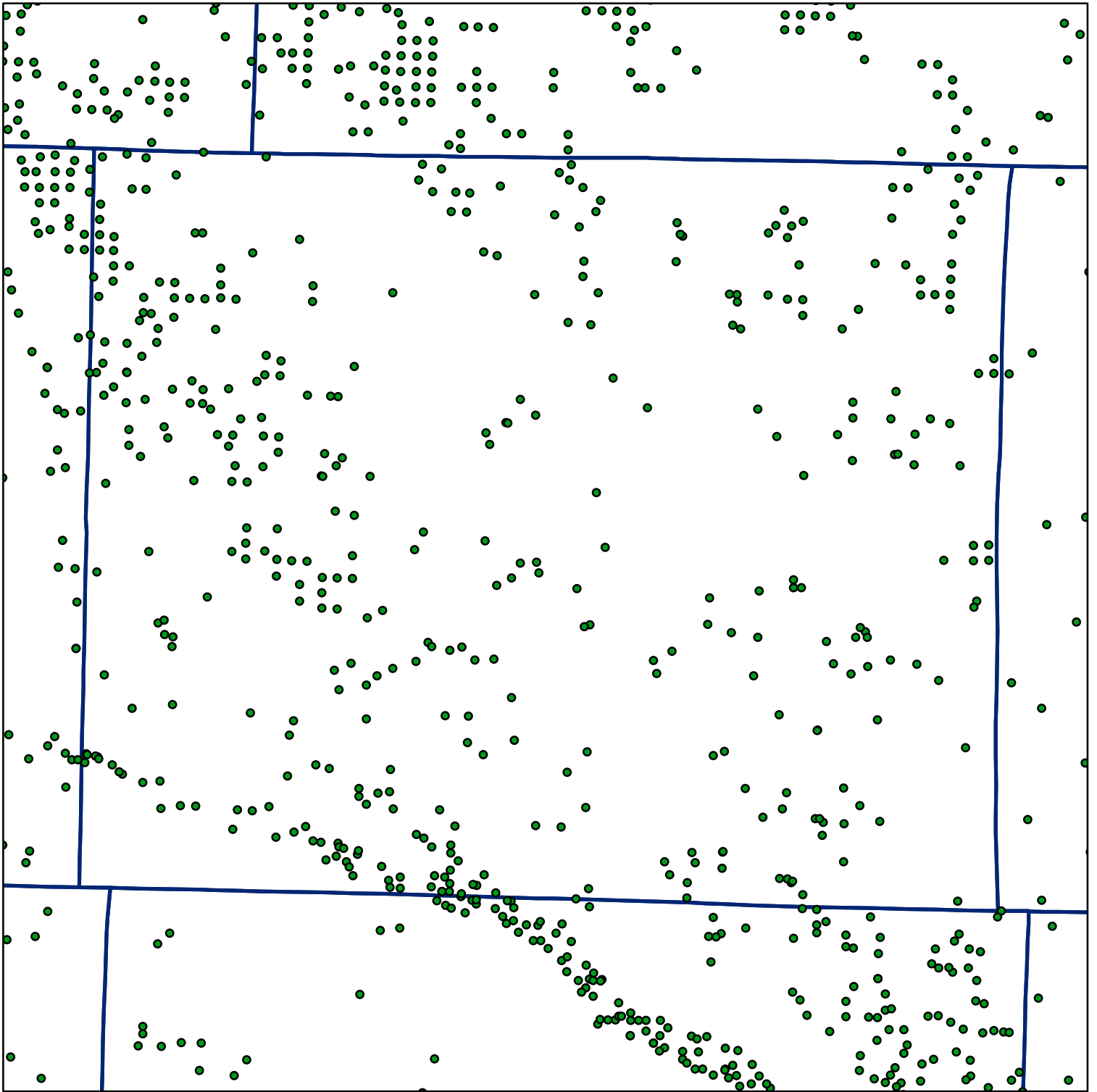


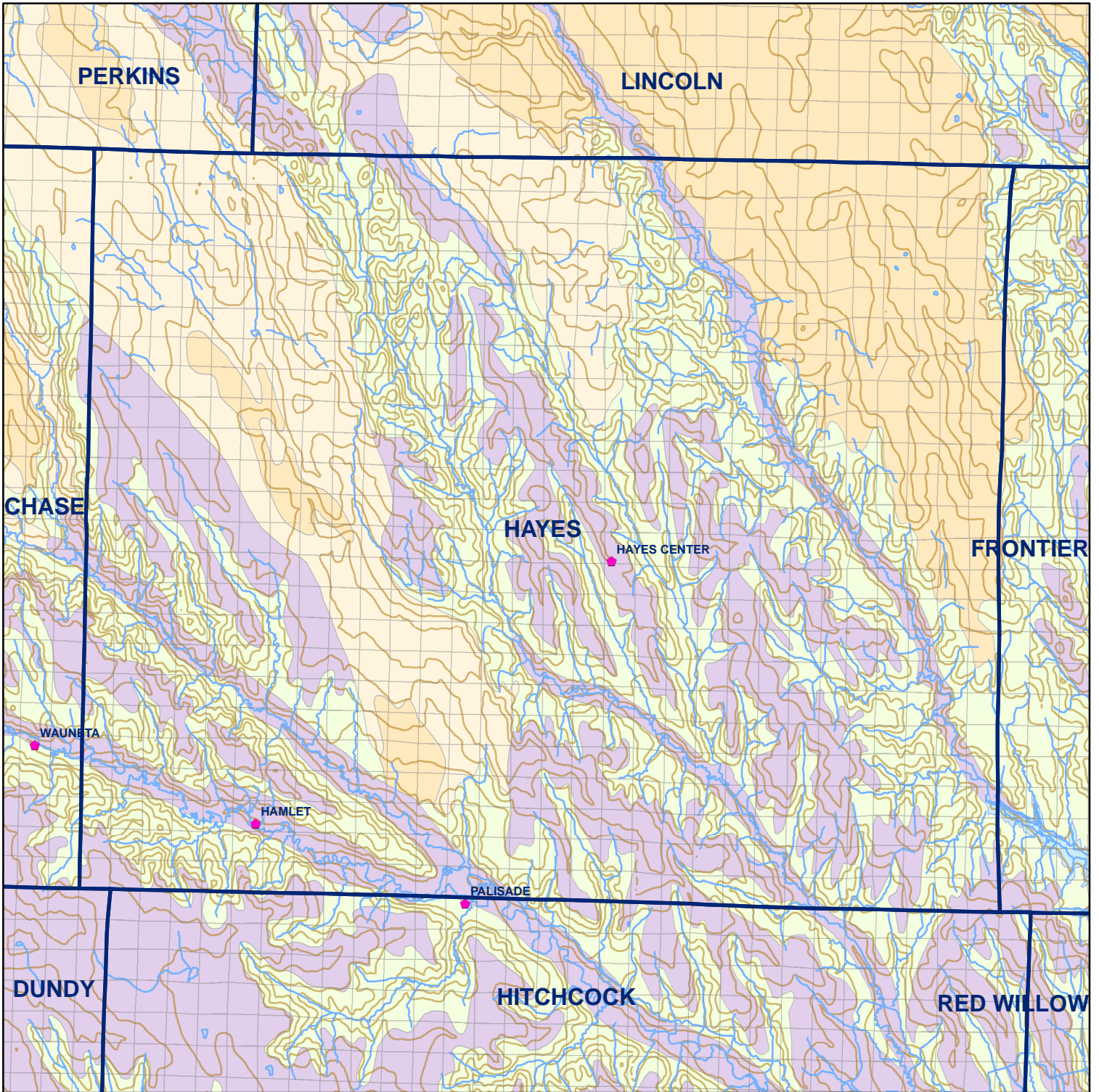
 Market Areas



● Registered Wells > 500 GPM

3587	3585	3583	3581	3579	3577	3575
3611	3613	3615	3617	3619	3621	3623
3819	3817	3815	3813	3811	3809	3807
3845	3847	3849	3851	3853	3855	3857
4055	4053	4051	4049	4047	4045	4043
4081	4083	4085	4087	4089	4091	4093
4295	4293	4291	4289	4287		

Geo Codes



# Hayes County

## Legend

⌘ Towns

▭ Sections

— Rivers and Streams

— Topography

## Soil Classes

— Lakes and Ponds

— Excessively drained sandy soils formed in alluvium in valleys and eolian sand on uplands in sandhills

— Excessively drained sandy soils formed in eolian sands on uplands in sandhills

— Moderately well drained silty soils on uplands and in depressions formed in loess

— Well drained silty soils formed in loess on uplands

— Well drained silty soils formed in loess and alluvium on stream terraces

— Well to somewhat excessively drained loamy soils formed in weathered sandstone and eolian material on uplands

— Somewhat poorly drained soils formed in alluvium on bottom lands

— Moderately well drained silty soils with clayey subsoils on uplands