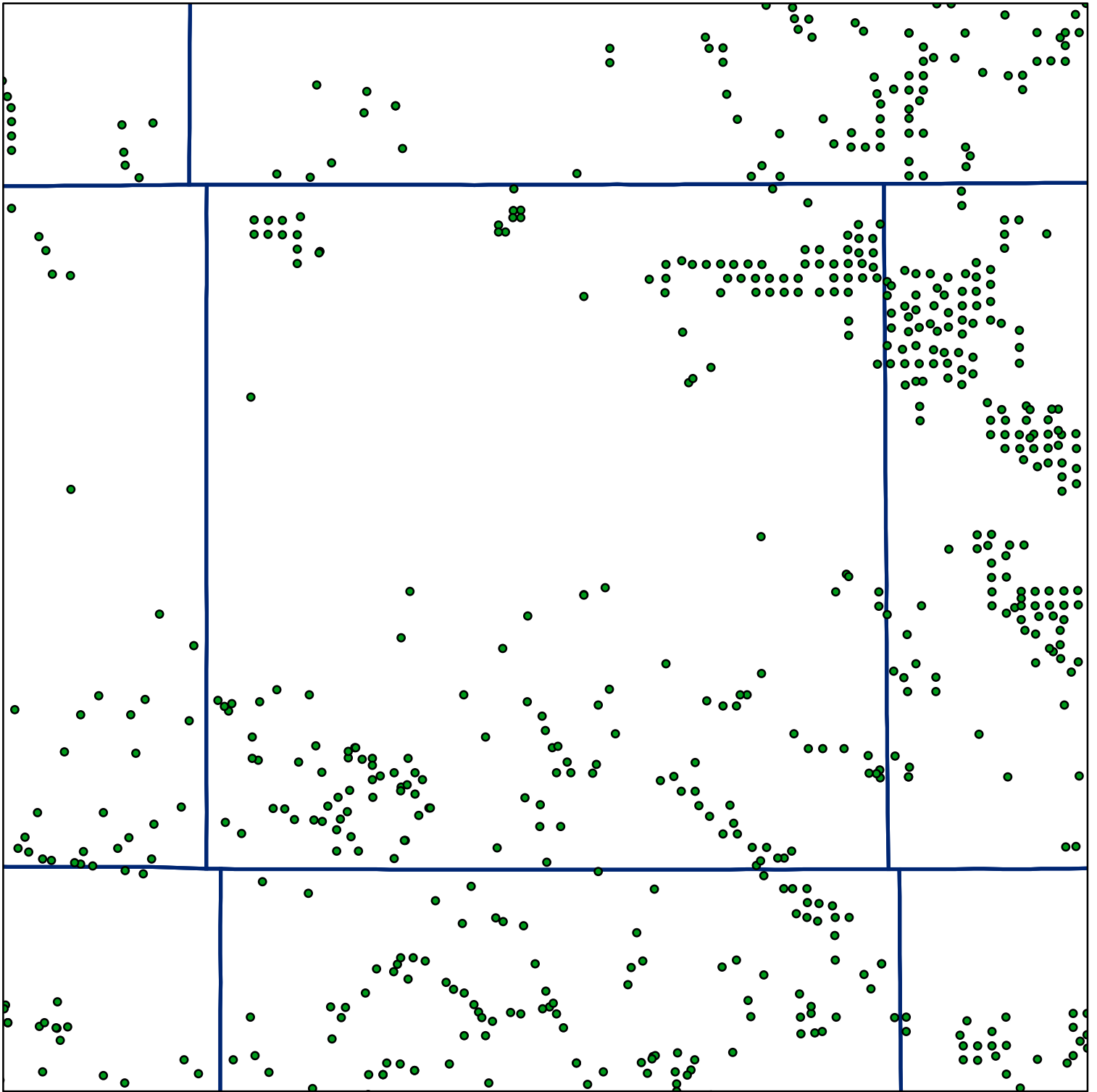


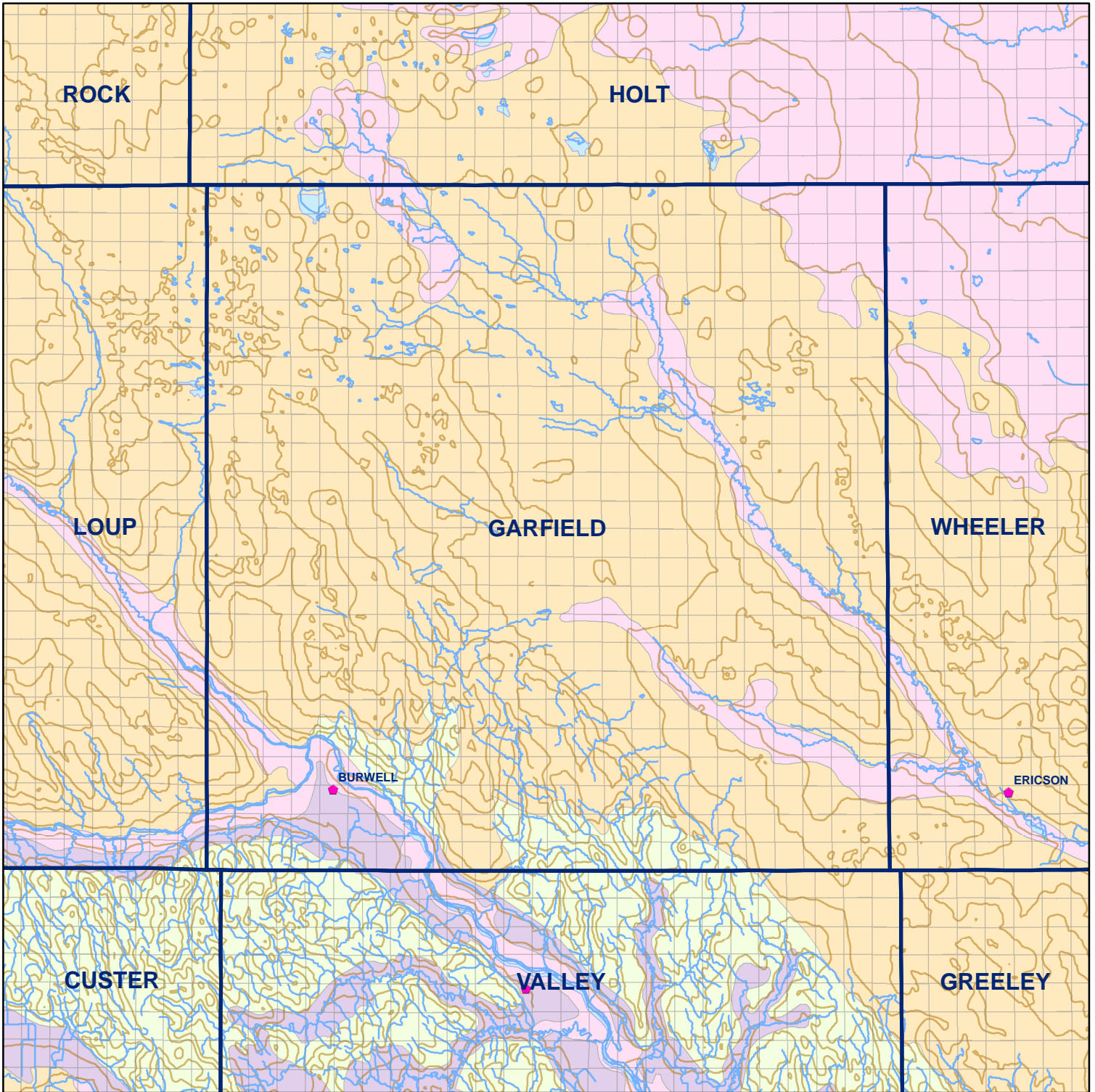
 Market Areas



● Registered Wells > 500 GPM

1191	1193	1195	1197	1199	1201	1203	1205
1305	1303	1301	1299	1297	1295	1293	1291
1467	1469	1471	1473	1475	1477	1479	1481
1585	1583	1581	1579	1577	1575	1573	1571
1747	1749	1751	1753	1755	1757	1759	1761
1869	1867	1865	1863	1861	1859	1857	1855
2031	2033	2035	2037	2039	2041	2043	2045
2153	2151	2149	2147	2145	2143	2141	2139

Geo Codes



Garfield County

Legend

⊕ **Towns**

□ **Sections**

— **Rivers and Streams**

— **Topography**

Soil Classes

■ Lakes and Ponds

■ Excessively drained sandy soils formed in alluvium in valleys and eolian sand on uplands in sandhills

■ Excessively drained sandy soils formed in eolian sands on uplands in sandhills

■ Moderately well drained silty soils on uplands and in depressions formed in loess

■ Well drained silty soils formed in loess on uplands

■ Well drained silty soils formed in loess and alluvium on stream terraces

■ Well to somewhat excessively drained loamy soils formed in weathered sandstone and eolian material on uplands

■ Somewhat poorly drained soils formed in alluvium on bottom lands

■ Moderately well drained silty soils with clayey subsoils on uplands