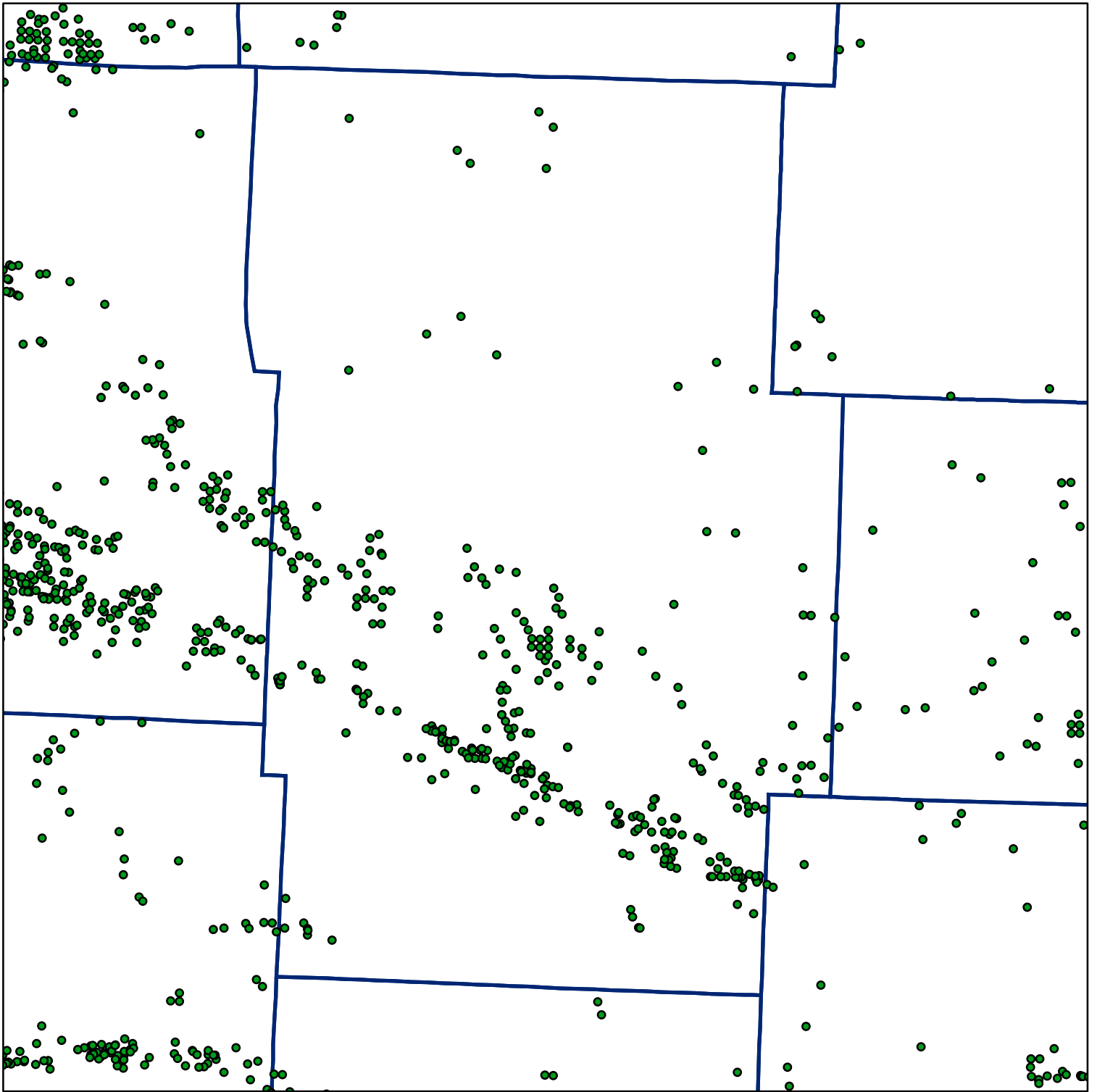


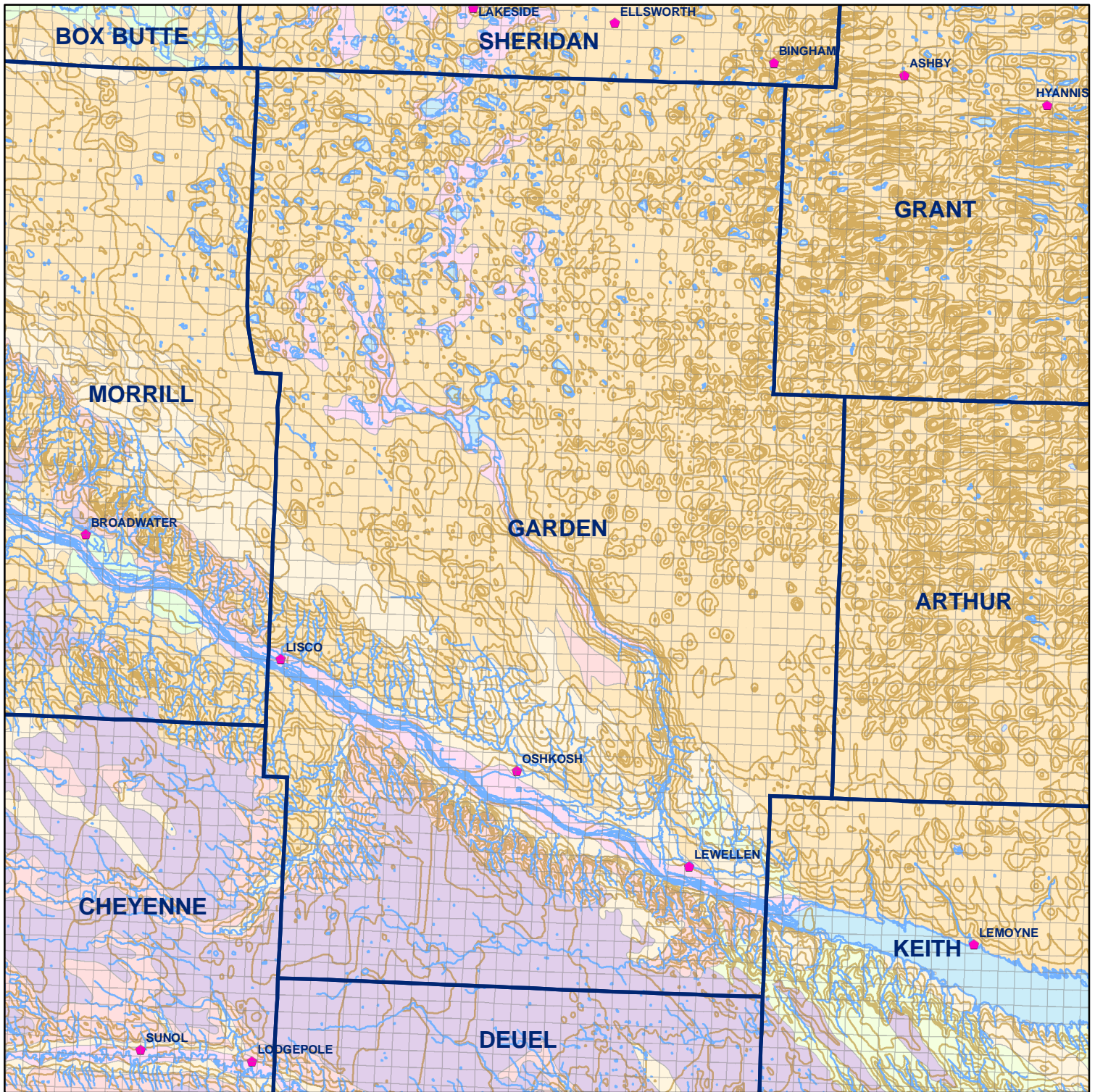
 Market Areas



● Registered Wells > 500 GPM

1405	1407	1409	1411	1413	1415	1417	1419	1421	1423	1425	1427
1647	1645	1643	1641	1639	1637	1635	1633	1631	1629	1627	1625
1685	1687	1689	1691	1693	1695	1697	1699	1701	1703	1705	1707
1931	1929	1927	1925	1923	1921	1919	1917	1915	1913	1911	1909
1969	1971	1973	1975	1977	1979	1981	1983	1985	1987	1989	1991
2215	2213	2211	2209	2207	2205	2203	2201	2199	2197	2195	2193
2253	2255	2257	2259	2261	2263	2265	2267	2269	2271	2273	2275
2503	2501	2499	2497	2495	2493	2491	2489	2487	2485	2483	2481
2543	2545	2547	2549	2551	2553	2555	2557	2559	2561	2563	2565
2797	2795	2793	2791	2789	2787	2785	2783	2781	2779	2777	2775
2839	2841	2843	2845	2847	2849	2851	2853	2855	2857	2859	2861
3093	3091	3089	3087	3085	3083	3081					

Geo Codes



## Garden County

### Legend

📍 **Towns**

□ **Sections**

— **Rivers and Streams**

— **Topography**

### Soil Classes

🟦 Lakes and Ponds

🟠 Excessively drained sandy soils formed in alluvium in valleys and eolian sand on uplands in sandhills

🟡 Excessively drained sandy soils formed in eolian sands on uplands in sandhills

🟣 Moderately well drained silty soils on uplands and in depressions formed in loess

🟢 Well drained silty soils formed in loess on uplands

🟤 Well drained silty soils formed in loess and alluvium on stream terraces

🟠 Well to somewhat excessively drained loamy soils formed in weathered sandstone and eolian material on uplands

🟢 Somewhat poorly drained soils formed in alluvium on bottom lands

🟦 Moderately well drained silty soils with clayey subsoils on uplands