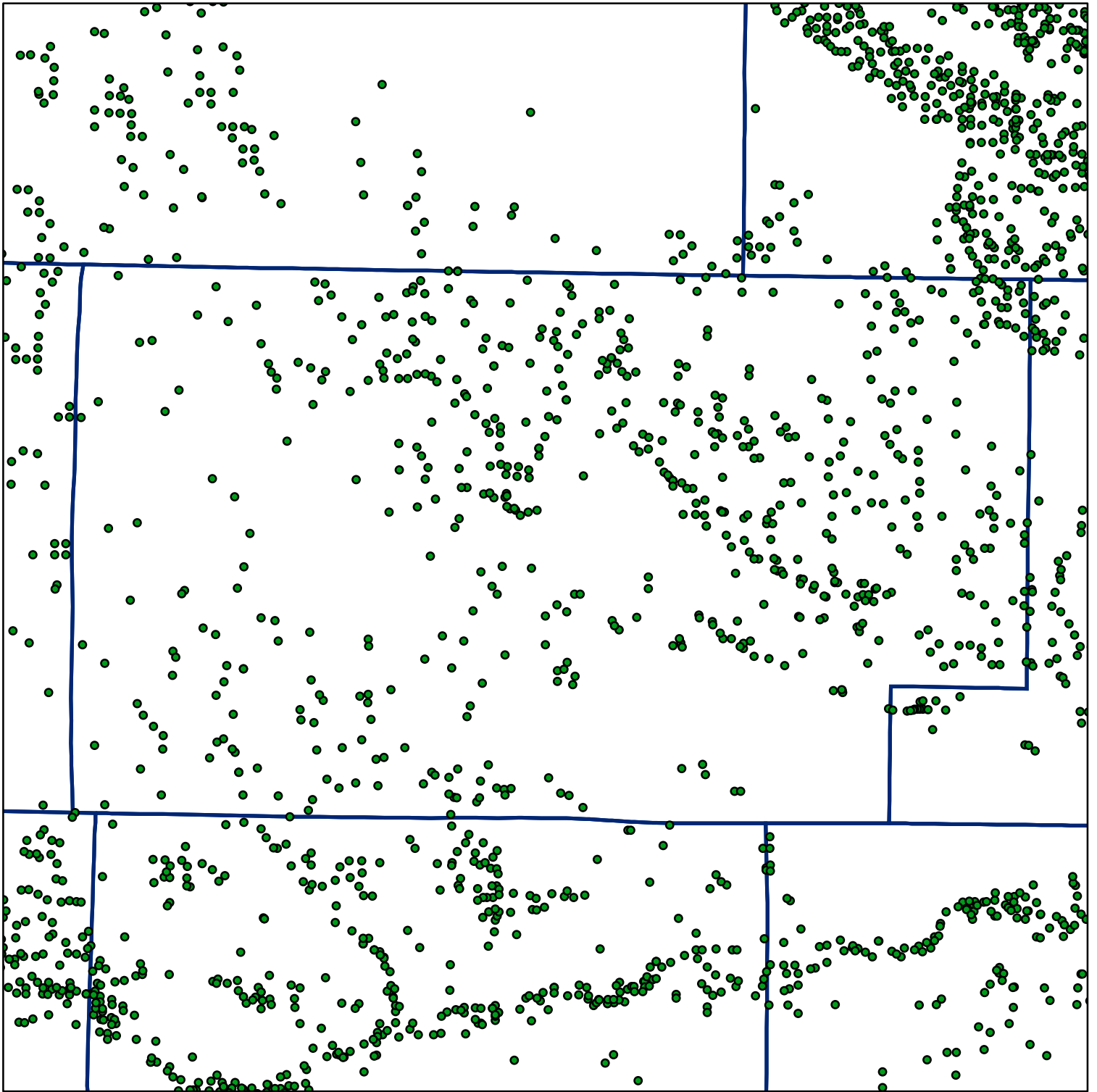


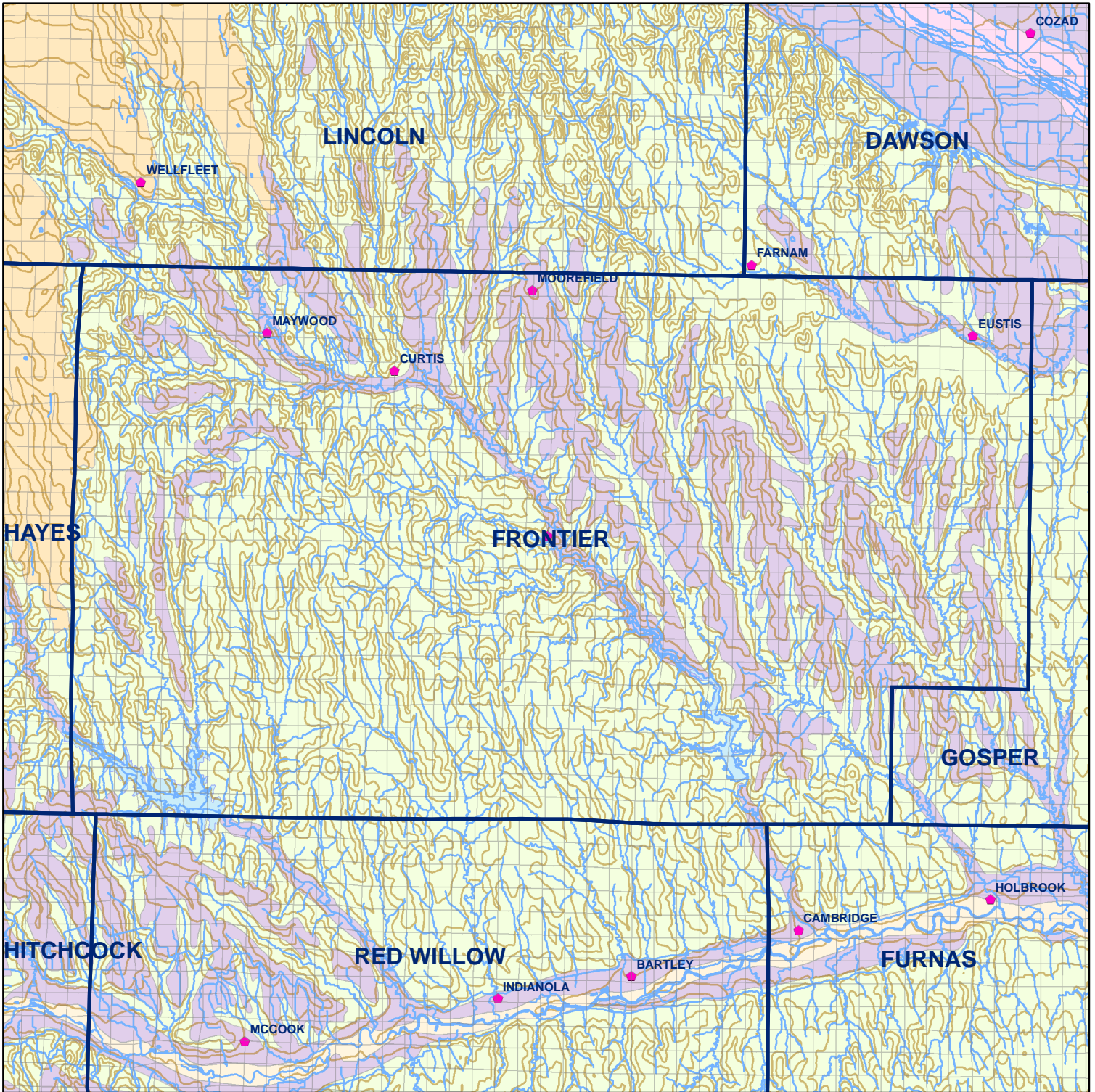
 Market Areas



● Registered Wells > 500 GPM

				3345	3343	3341	3339	3337
3395	3397	3399	3401	3403	3405	3407	3409	3411
3577	3575	3573	3571	3569	3567	3565	3563	3561
3621	3623	3625	3627	3629	3631	3633	3635	3637
3809	3807	3805	3803	3801	3799	3797	3795	3793
3855	3857	3859	3861	3863	3865	3867	3869	3871
4045	4043	4041	4039	4037	4035	4033	4031	4029
4091	4093	4095	4097	4099	4101	4103	4105	4107
4285	4283	4281	4279	4277	4275	4273	4271	4269
4331	4333	4335	4337					

Geo Codes



Frontier County

Legend

⌘ Towns

□ Sections

— Rivers and Streams

— Topography

Soil Classes

— Lakes and Ponds

— Excessively drained sandy soils formed in alluvium in valleys and eolian sand on uplands in sandhills

— Excessively drained sandy soils formed in eolian sands on uplands in sandhills

— Moderately well drained silty soils on uplands and in depressions formed in loess

— Well drained silty soils formed in loess on uplands

— Well drained silty soils formed in loess and alluvium on stream terraces

— Well to somewhat excessively drained loamy soils formed in weathered sandstone and eolian material on uplands

— Somewhat poorly drained soils formed in alluvium on bottom lands

— Moderately well drained silty soils with clayey subsoils on uplands