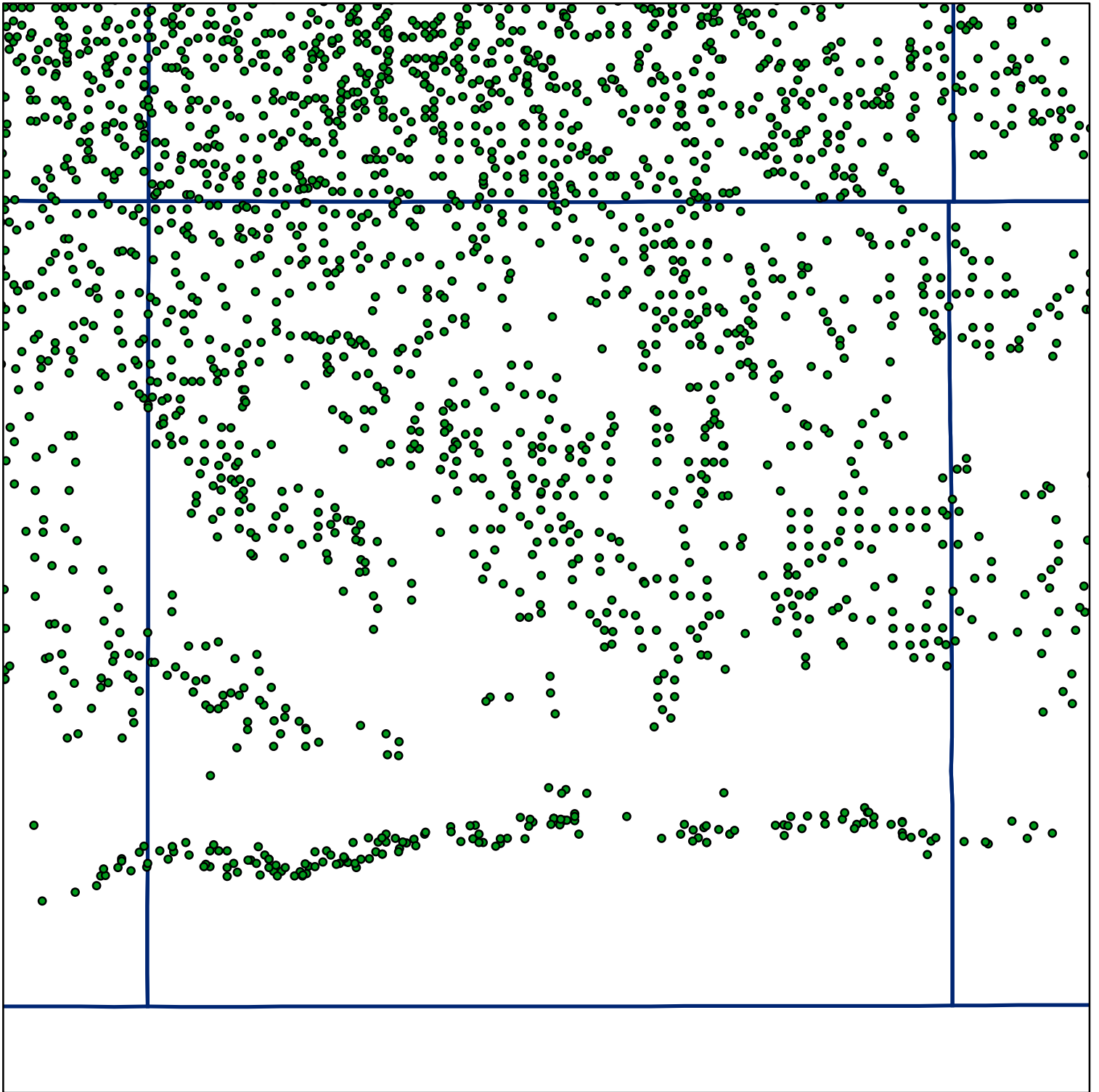
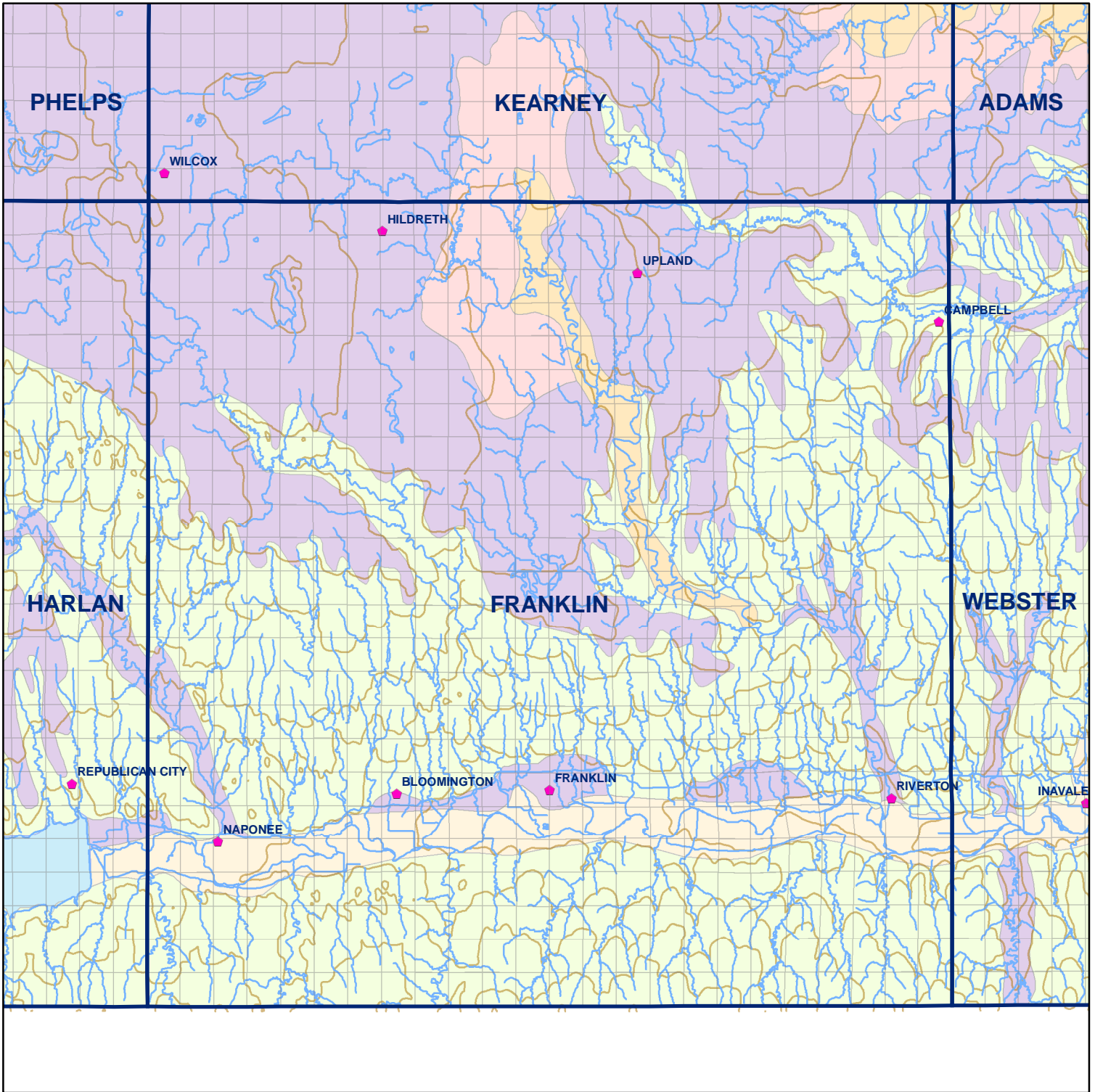


 Market Areas



● Registered Wells > 500 GPM

4017	4015	4013	4011	4009	4007
4119	4121	4123	4125	4127	4129
4257	4255	4253	4251	4249	4247
4359	4361	4363	4365	4367	4369
4503	4501	4499	4497	4495	4493



Franklin County

Legend

⌘ Towns

□ Sections

— Rivers and Streams

— Topography

Soil Classes

■ Lakes and Ponds

■ Excessively drained sandy soils formed in alluvium in valleys and eolian sand on uplands in sandhills

■ Excessively drained sandy soils formed in eolian sands on uplands in sandhills

■ Moderately well drained silty soils on uplands and in depressions formed in loess

■ Well drained silty soils formed in loess on uplands

■ Well drained silty soils formed in loess and alluvium on stream terraces

■ Well to somewhat excessively drained loamy soils formed in weathered sandstone and eolian material on uplands

■ Somewhat poorly drained soils formed in alluvium on bottom lands

■ Moderately well drained silty soils with clayey subsoils on uplands