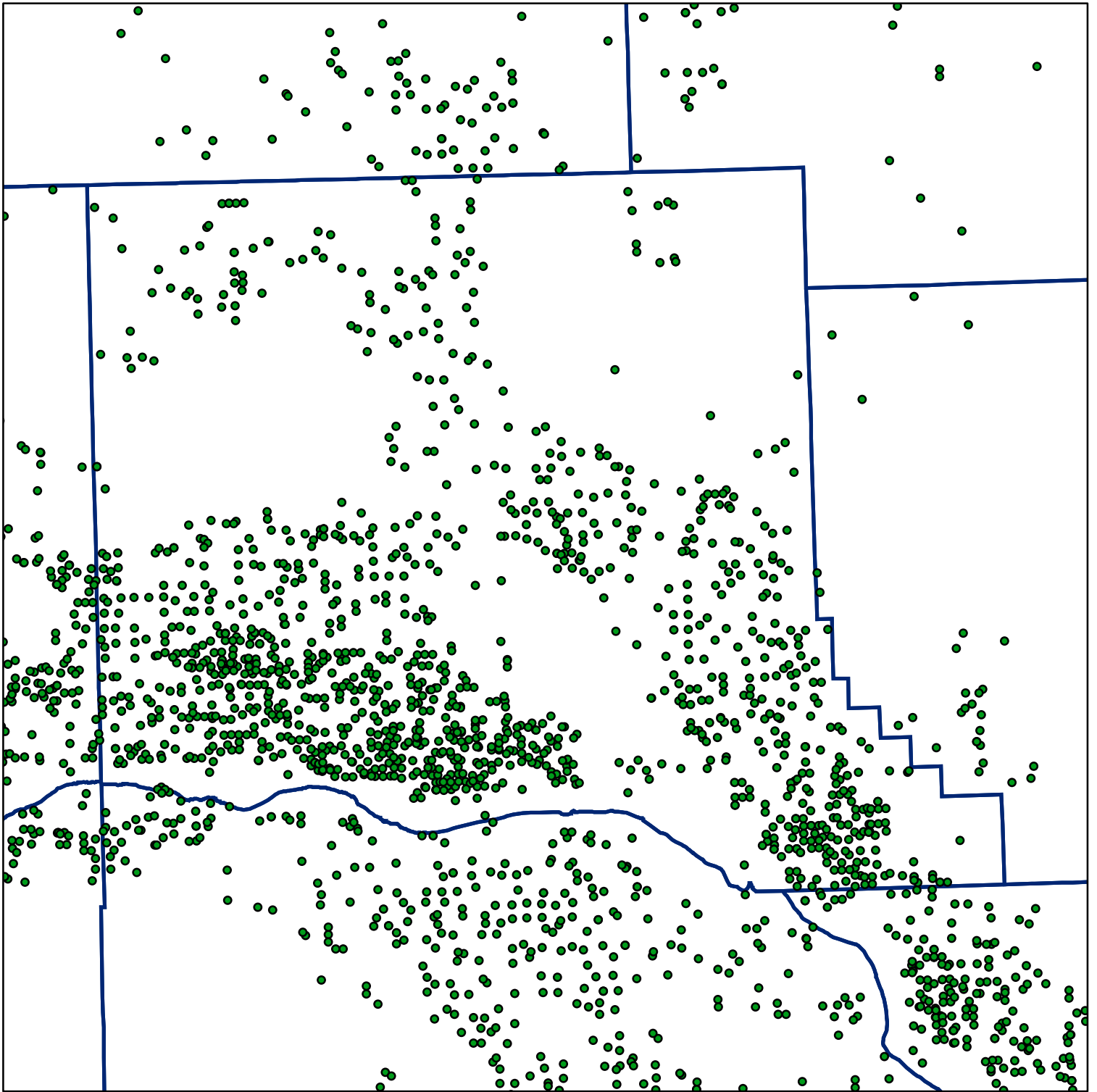
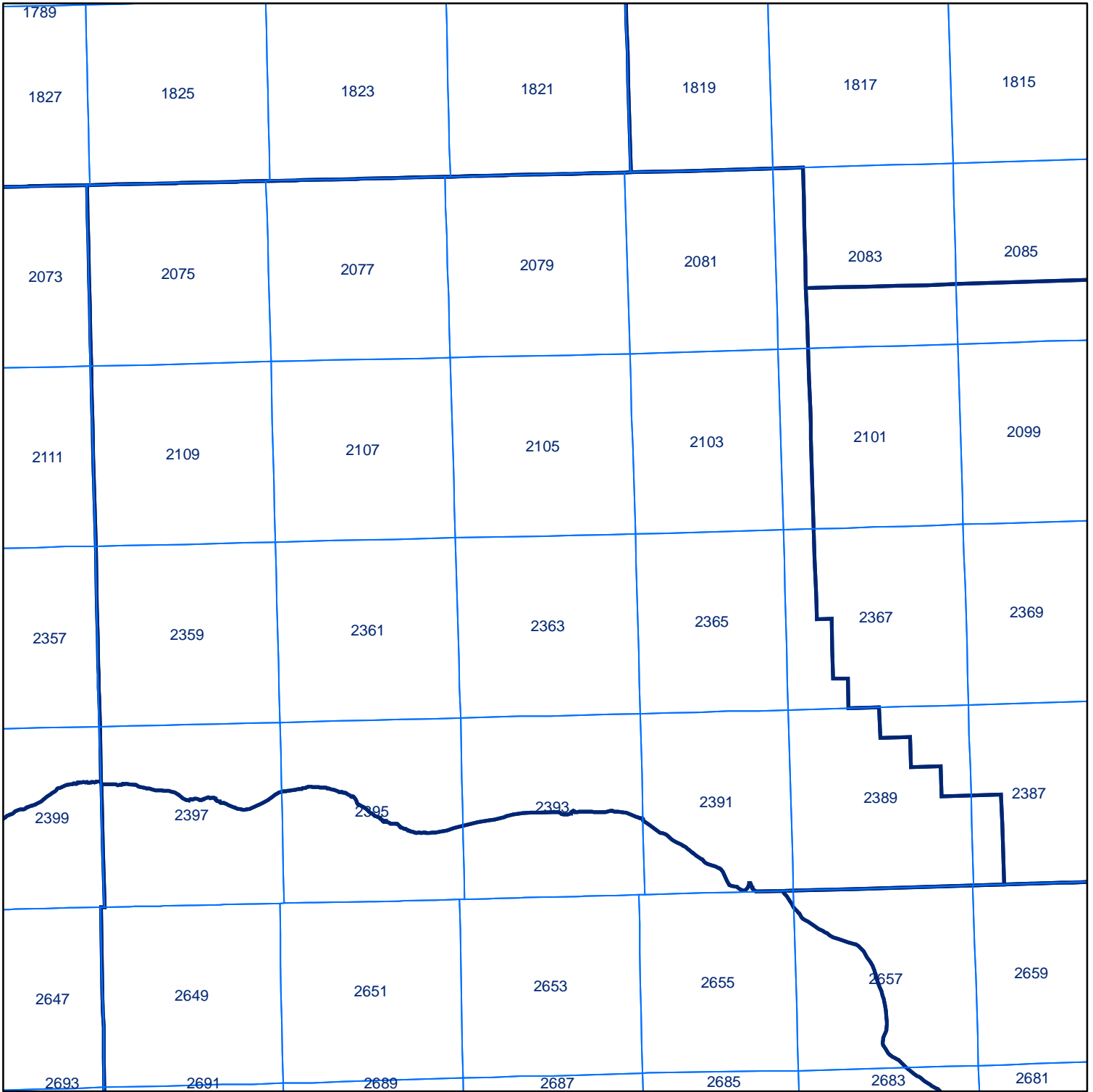


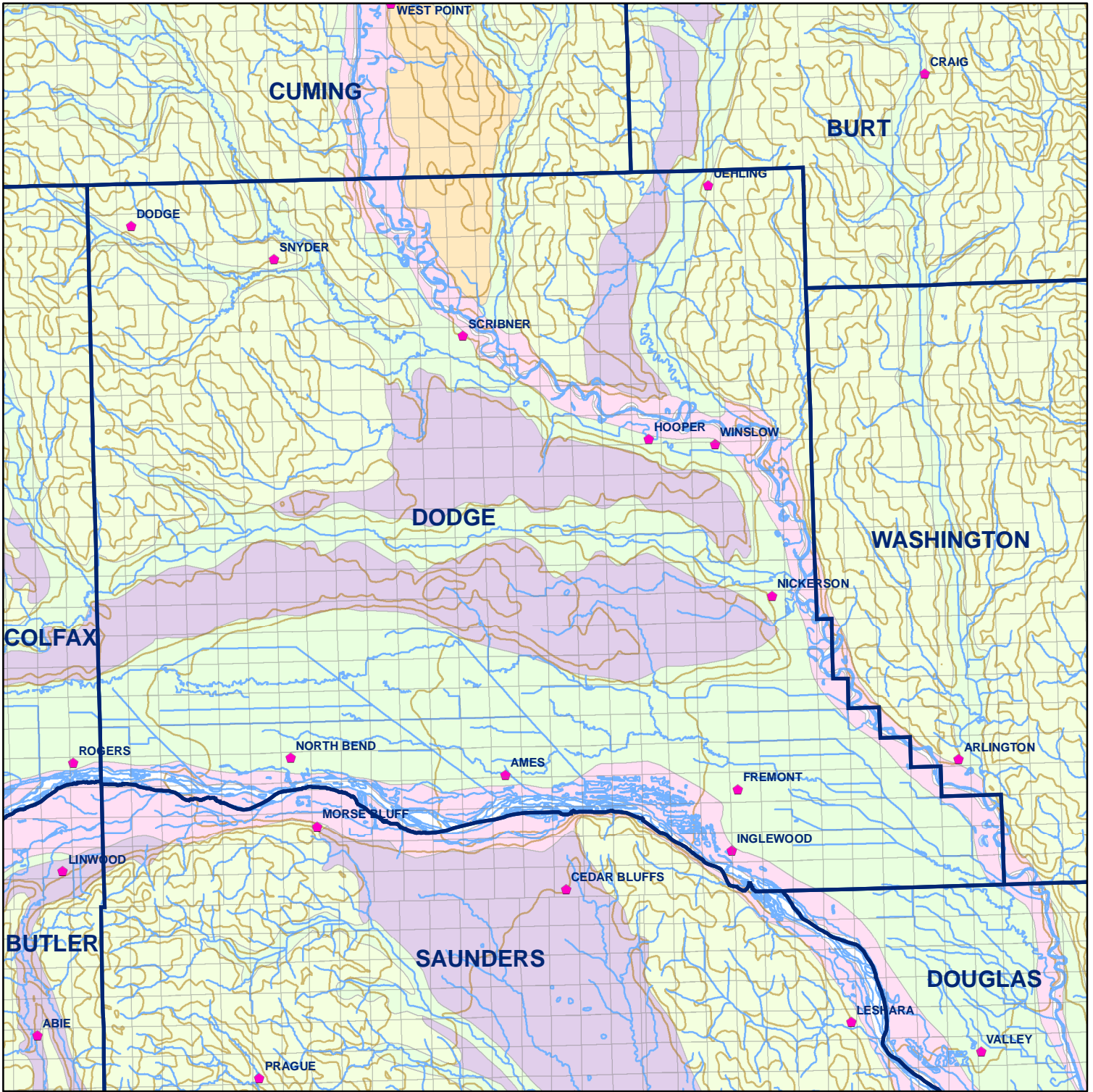
Market Areas



● Registered Wells > 500 GPM



Geo Codes



# Dodge County

## Legend

⚡ Towns

□ Sections

— Rivers and Streams

— Topography

## Soil Classes

■ Lakes and Ponds

■ Excessively drained sandy soils formed in alluvium in valleys and eolian sand on uplands in sandhills

■ Excessively drained sandy soils formed in eolian sands on uplands in sandhills

■ Moderately well drained silty soils on uplands and in depressions formed in loess

■ Well drained silty soils formed in loess on uplands

■ Well drained silty soils formed in loess and alluvium on stream terraces

■ Well to somewhat excessively drained loamy soils formed in weathered sandstone and eolian material on uplands

■ Somewhat poorly drained soils formed in alluvium on bottom lands

■ Moderately well drained silty soils with clayey subsoils on uplands