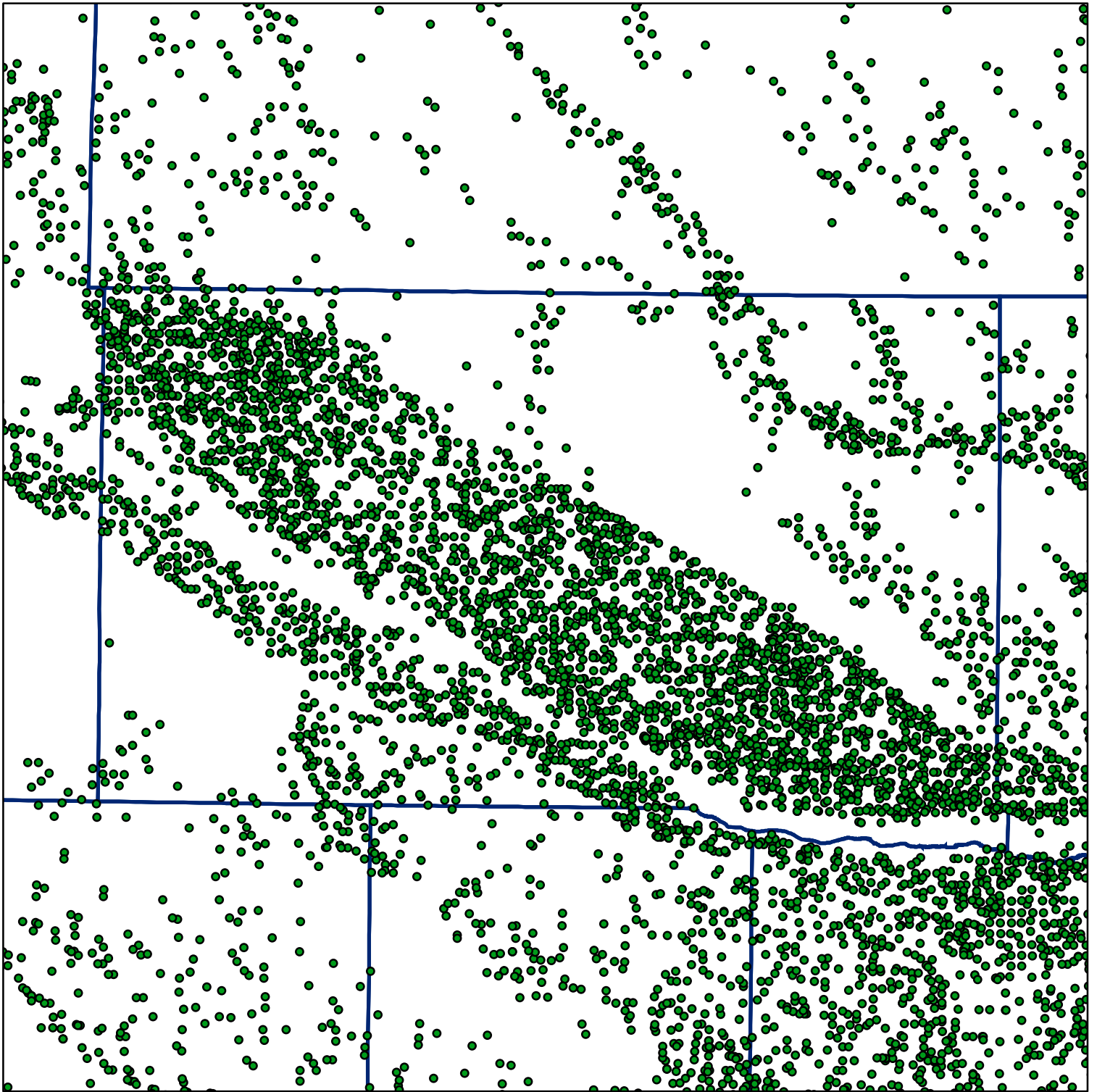


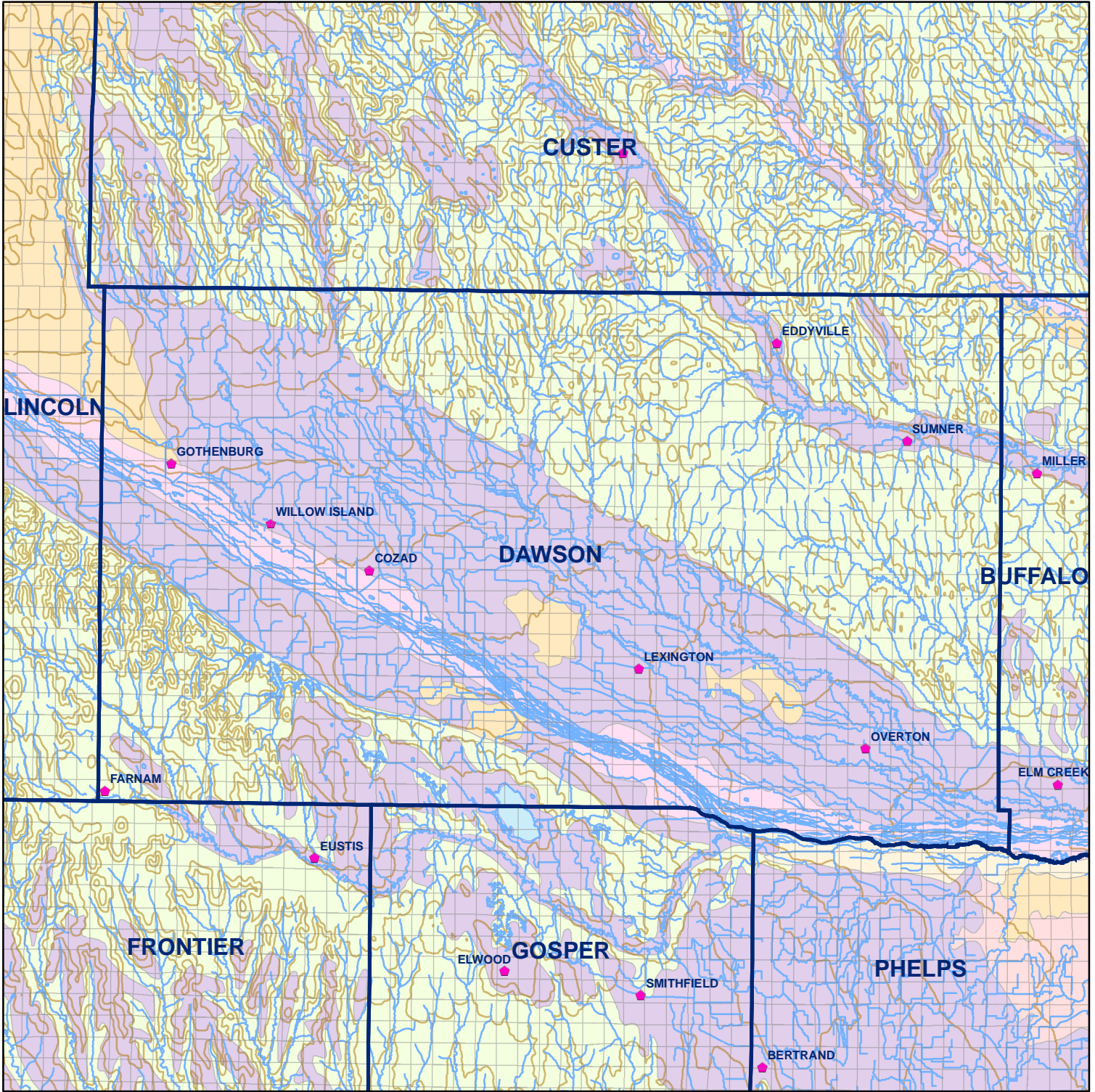
 Market Areas



● Registered Wells > 500 GPM

2751	2749	2747	2745	2743	2741	2739	2737	2735
2885	2887	2889	2891	2893	2895	2897	2899	2901
3047	3045	3043	3041	3039	3037	3035	3033	3031
3181	3183	3185	3187	3189	3191	3193	3195	3197
3343	3341	3339	3337	3335	3333	3331	3329	3327
3405	3407	3409	3411	3413	3415	3417	3419	3421
3567	3565	3563	3561	3559	3557	3555	3553	3551
3631	3633	3635	3637	3639	3641	3643	3645	3647
3799	3797	3795	3793	3791	3789	3787	3785	3783
3865	3867	3869	3871	3873	3875	3877	3879	3881

Geo Codes



Dawson County

Legend

- ⌘ Towns
- ▭ Sections
- Rivers and Streams
- Topography

Soil Classes

- Lakes and Ponds
- Excessively drained sandy soils formed in alluvium in valleys and eolian sand on uplands in sandhills
- Excessively drained sandy soils formed in eolian sands on uplands in sandhills
- Moderately well drained silty soils on uplands and in depressions formed in loess
- Well drained silty soils formed in loess on uplands
- Well drained silty soils formed in loess and alluvium on stream terraces
- Well to somewhat excessively drained loamy soils formed in weathered sandstone and eolian material on uplands
- Somewhat poorly drained soils formed in alluvium on bottom lands
- Moderately well drained silty soils with clayey subsoils on uplands