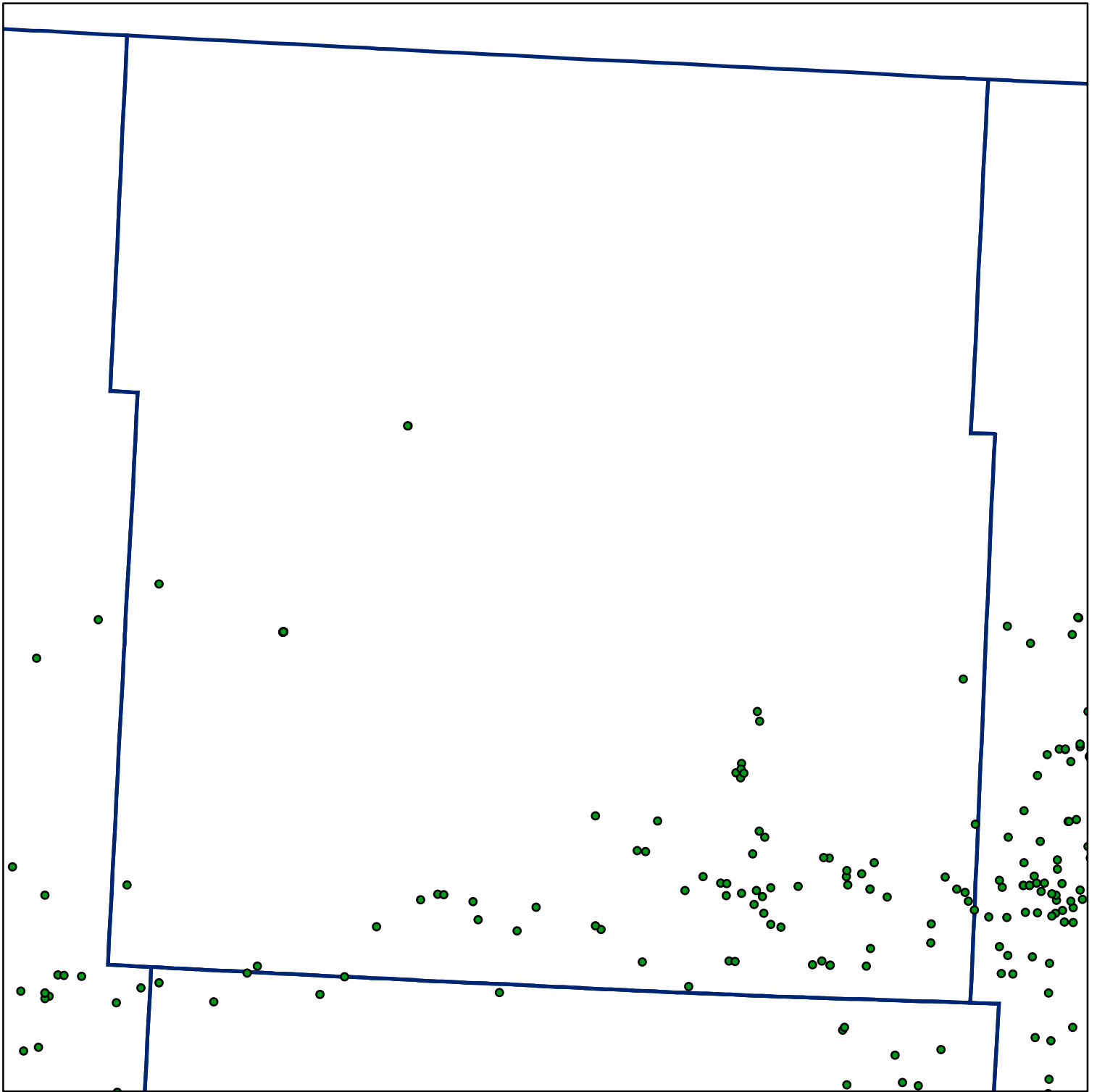


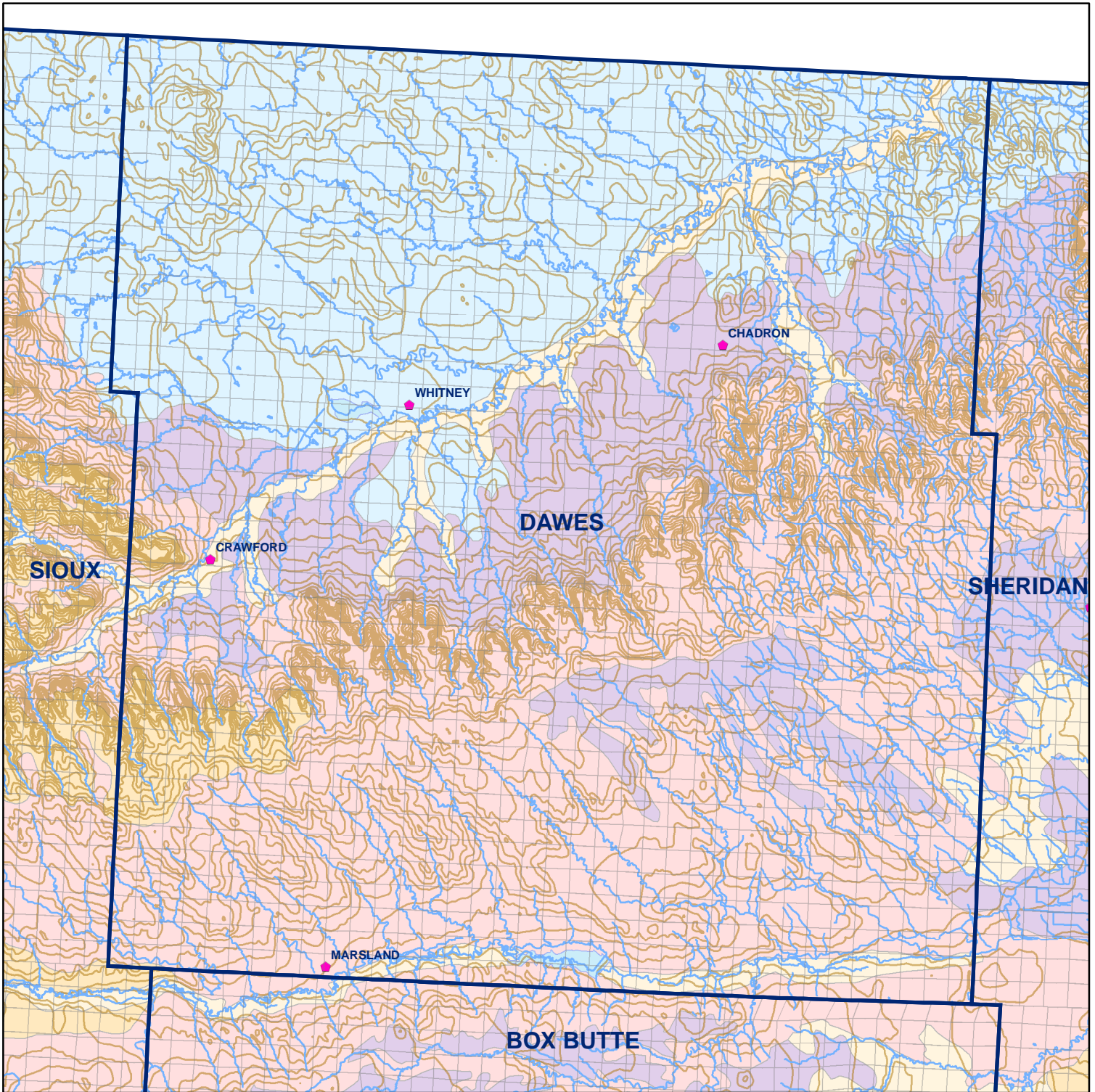
Market Areas



● Registered Wells > 500 GPM

87	85	83	81	79	77	75	73
105	107	109	111	113	115	117	119
307	305	303	301	299	297	295	293
325	327	329	331	333	335	337	339
561	559	557	555	553	551	549	547
579	581	583	585	587	589	591	593
825	823	821	819	817	815	813	811
843	845	847	849	851	853	855	857
	845	847	849	851	853	855	859

Geo Codes



# Dawes County

## Legend

- ⦿ **Towns**
- Sections**
- **Rivers and Streams**
- **Topography**

## Soil Classes

- Lakes and Ponds
- Excessively drained sandy soils formed in alluvium in valleys and eolian sand on uplands in sandhills
- Excessively drained sandy soils formed in eolian sands on uplands in sandhills
- Moderately well drained silty soils on uplands and in depressions formed in loess
- Well drained silty soils formed in loess on uplands
- Well drained silty soils formed in loess and alluvium on stream terraces
- Well to somewhat excessively drained loamy soils formed in weathered sandstone and eolian material on uplands
- Somewhat poorly drained soils formed in alluvium on bottom lands
- Moderately well drained silty soils with clayey subsoils on uplands