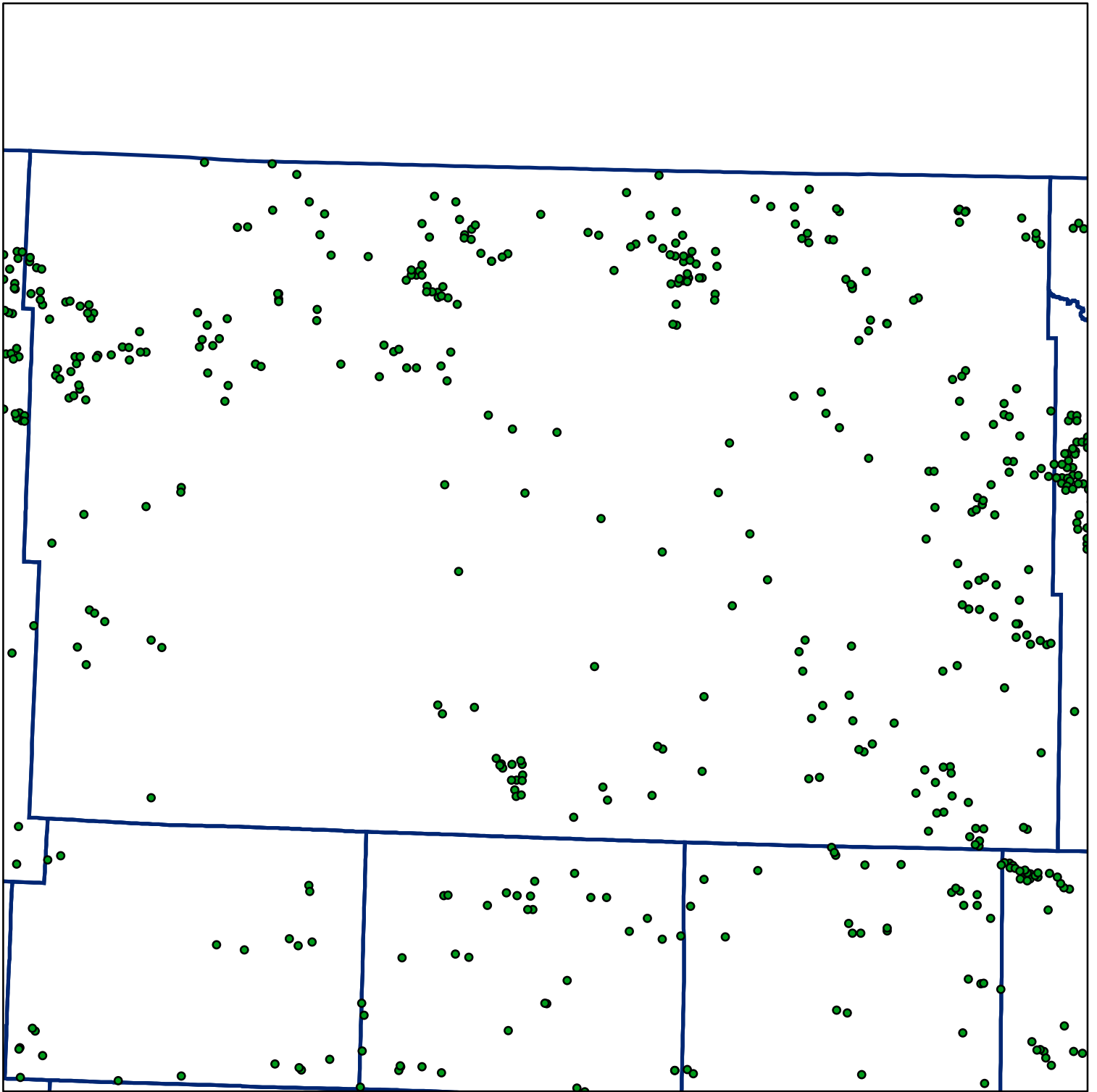


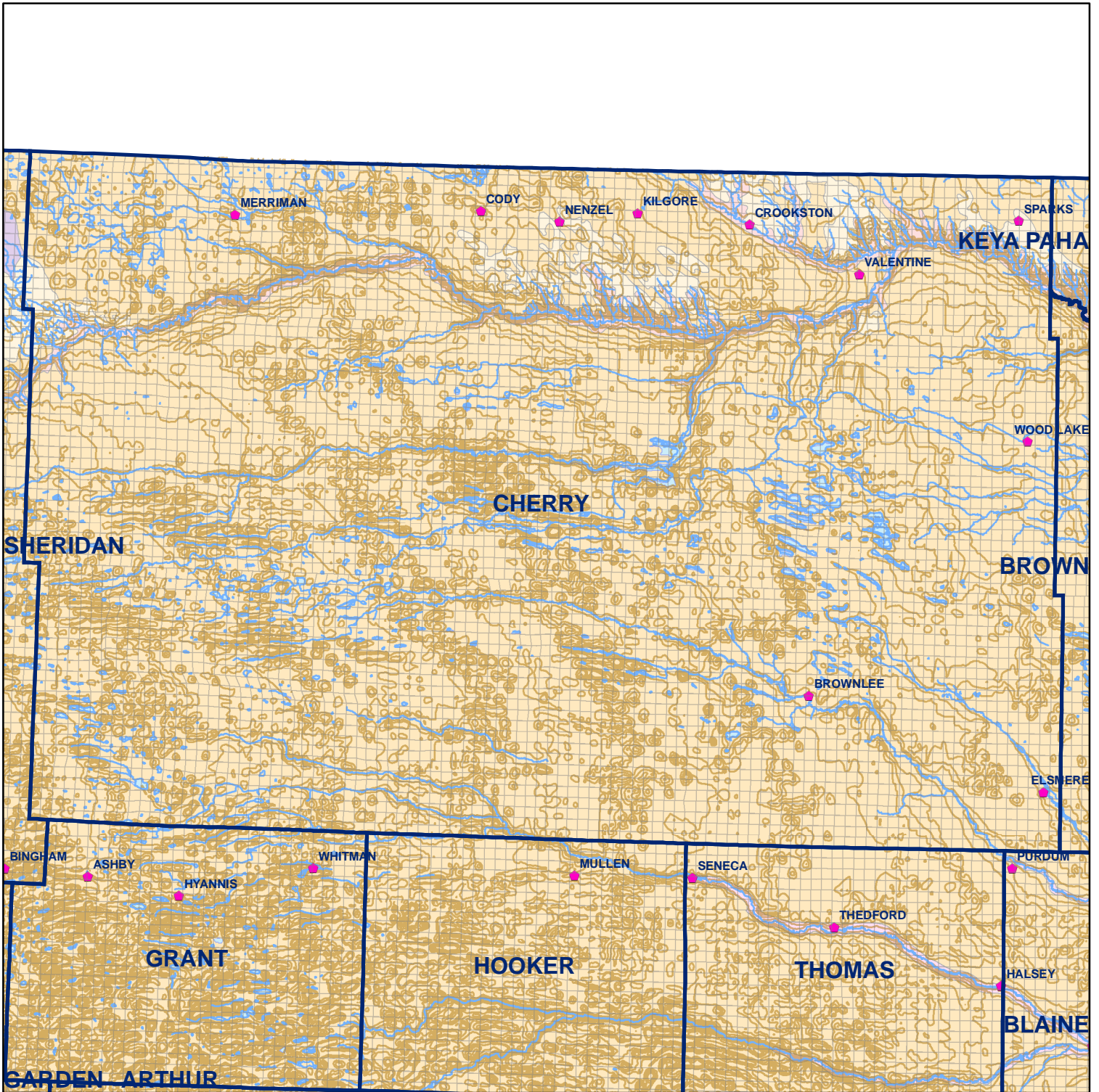
Market Areas



● Registered Wells > 500 GPM

63	61	59	57	55	53	51	49	47	45	43	41	39	37	35	33	31	29
129	131	133	135	137	139	141	143	145	147	149	151	153	155	157	159	161	163
283	281	279	277	275	273	271	269	267	265	263	261	259	257	255	253	251	249
349	351	353	355	357	359	361	363	365	367	369	371	373	375	377	379	381	383
537	535	533	531	529	527	525	523	521	519	517	515	513	511	509	507	505	503
603	605	607	609	611	613	615	617	619	621	623	625	627	629	631	633	635	637
80	799	797	795	793	791	789	787	785	783	781	779	777	775	773	771	769	767
869	871	873	875	877	879	881	883	885	887	889	891	893	895	897	899	901	903
1075	1073	1071	1069	1067	1065	1063	1061	1059	1057	1055	1053	1051	1049	1047	1045	1043	1041
1145	1147	1149	1151	1153	1155	1157	1159	1161	1163	1165	1167	1169	1171	1173	1175	1177	1179
135	1349	1347	1345	1343	1341	1339	1337	1335	1333	1331	1329	1327	1325	1323	1321	1319	1317
1421	1423	1425	1427	1429	1431	1433	1435	1437	1439	1441	1443	1445	1447	1449	1451	1453	1455
1631	1629	1627	1625	1623	1621	1619	1617	1615	1613	1611	1609	1607	1605	1603	1601	1599	1597
701	1703	1705	1707	1709	1711	1713	1715	1717	1719	1721	1723	1725	1727	1729	1731	1733	1735
915	1913	1911	1909	1907	1905	1903	1901	1899	1897	1895	1893	1891	1889	1887	1885	1883	1881
1985	1987	1989	1991	1993	1995	1997											

Geo Codes



Cherry County

Legend

⌘ Towns

□ Sections

— Rivers and Streams

— Topography

Soil Classes

— Lakes and Ponds

— Excessively drained sandy soils formed in alluvium in valleys and eolian sand on uplands in sandhills

— Excessively drained sandy soils formed in eolian sands on uplands in sandhills

— Moderately well drained silty soils on uplands and in depressions formed in loess

— Well drained silty soils formed in loess on uplands

— Well drained silty soils formed in loess and alluvium on stream terraces

— Well to somewhat excessively drained loamy soils formed in weathered sandstone and eolian material on uplands

— Somewhat poorly drained soils formed in alluvium on bottom lands

— Moderately well drained silty soils with clayey subsoils on uplands