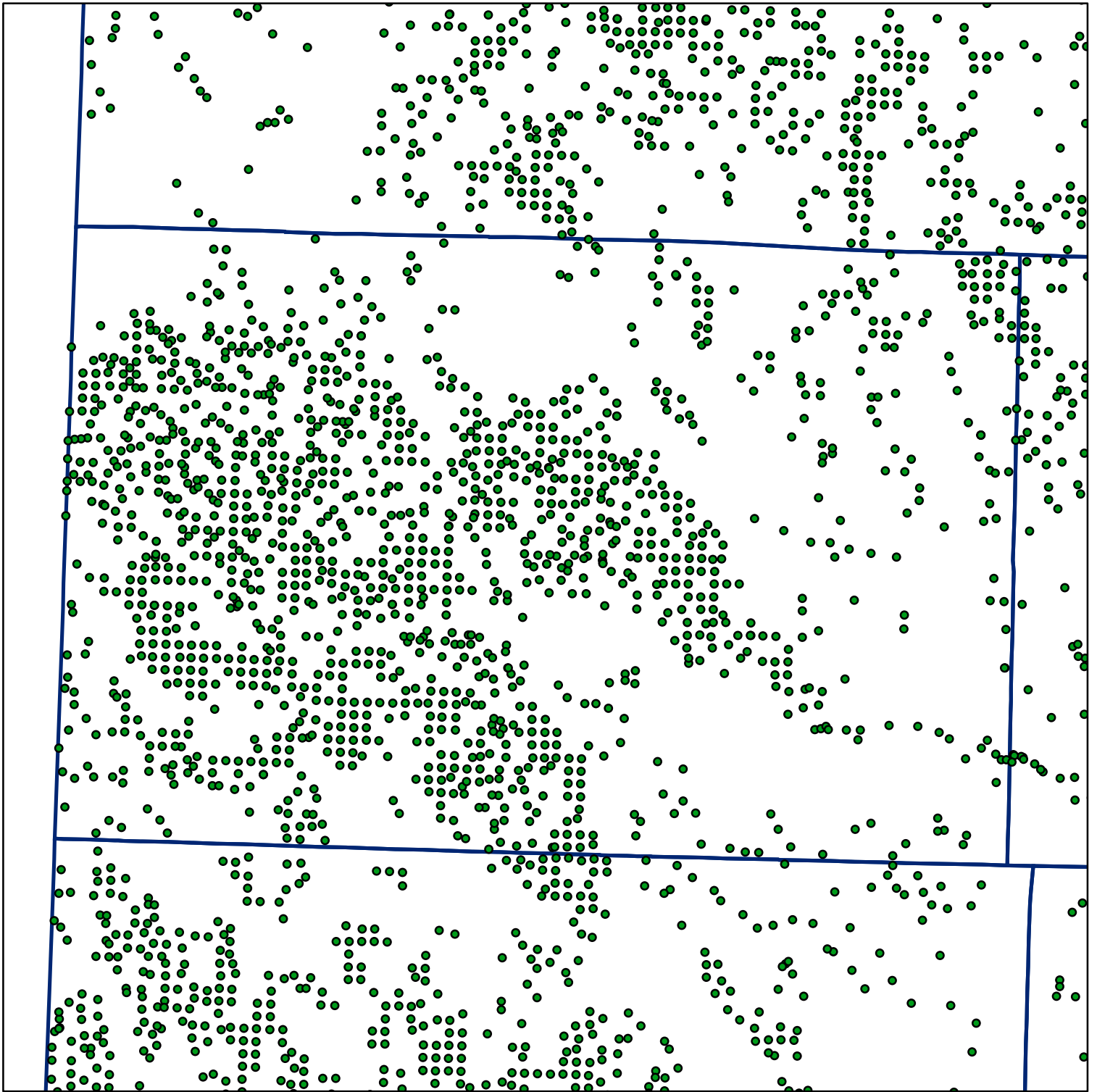


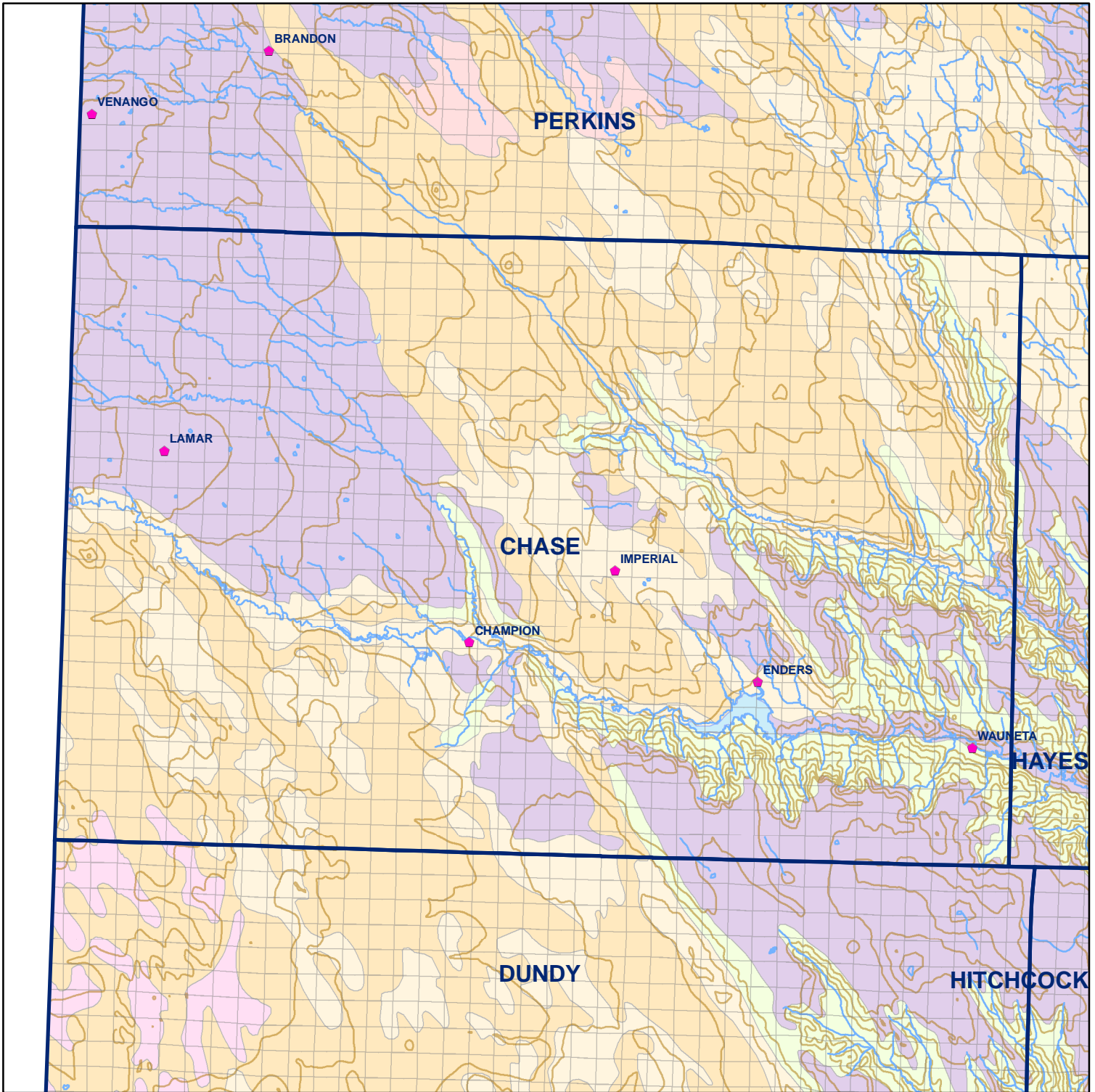
 Market Areas



● Registered Wells > 500 GPM

	3375	3377	3379	3381	3383	3385	3387
	3597	3595	3593	3591	3589	3587	3585
3599	3601	3603	3605	3607	3609	3611	3613
3831	3829	3827	3825	3823	3821	3819	3817
3833	3835	3837	3839	3841	3843	3845	3847
4067	4065	4063	4061	4059	4057	4055	4053
4069	4071	4073	4075	4077	4079	4081	4083
4307	4305	4303	4301	4299	4297	4295	4293

Geo Codes



## Chase County

### Legend

⌘ Towns

▭ Sections

— Rivers and Streams

— Topography

### Soil Classes

▭ Lakes and Ponds

▭ Excessively drained sandy soils formed in alluvium in valleys and eolian sand on uplands in sandhills

▭ Excessively drained sandy soils formed in eolian sands on uplands in sandhills

▭ Moderately well drained silty soils on uplands and in depressions formed in loess

▭ Well drained silty soils formed in loess on uplands

▭ Well drained silty soils formed in loess and alluvium on stream terraces

▭ Well to somewhat excessively drained loamy soils formed in weathered sandstone and eolian material on uplands

▭ Somewhat poorly drained soils formed in alluvium on bottom lands

▭ Moderately well drained silty soils with clayey subsoils on uplands