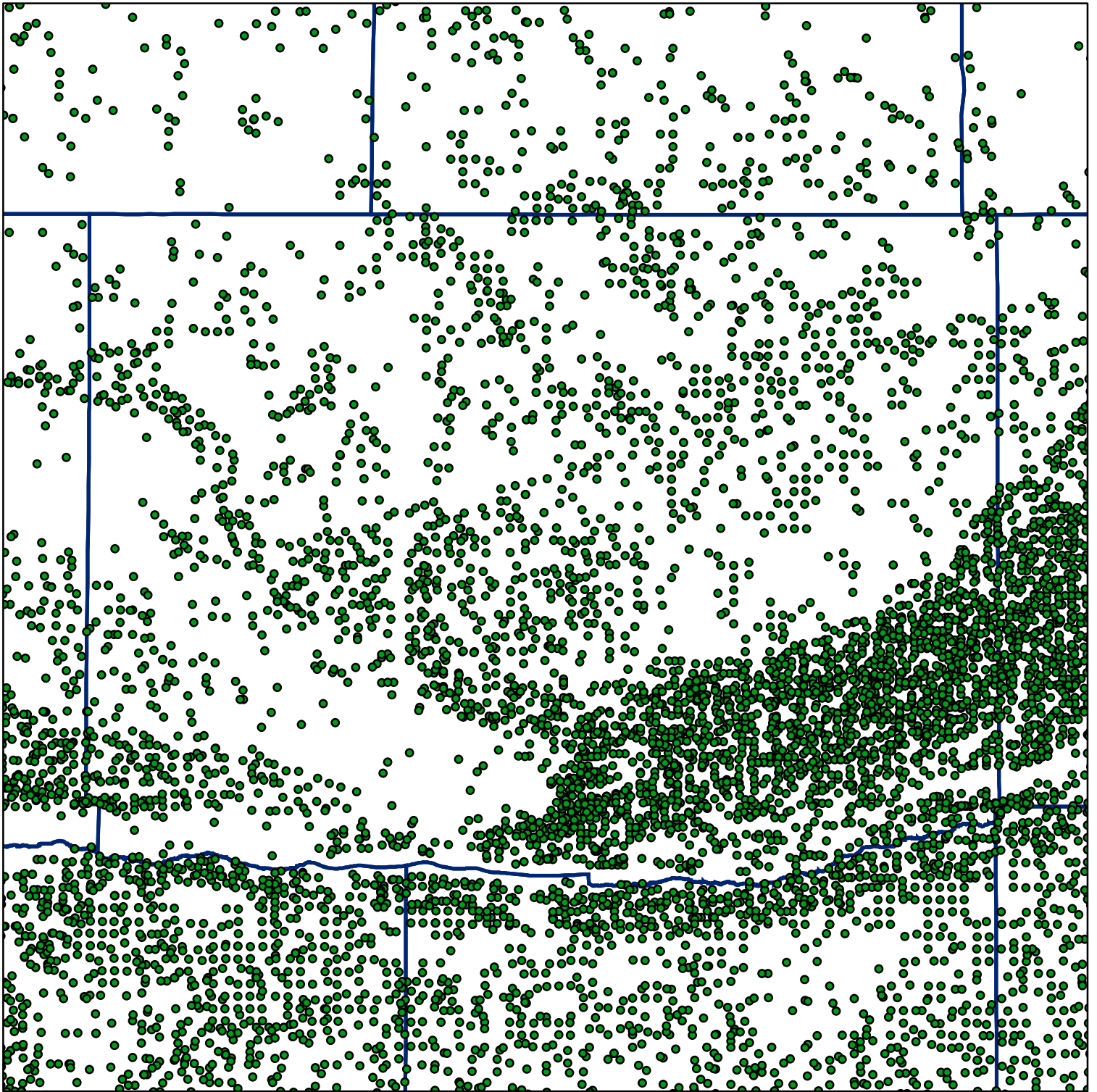
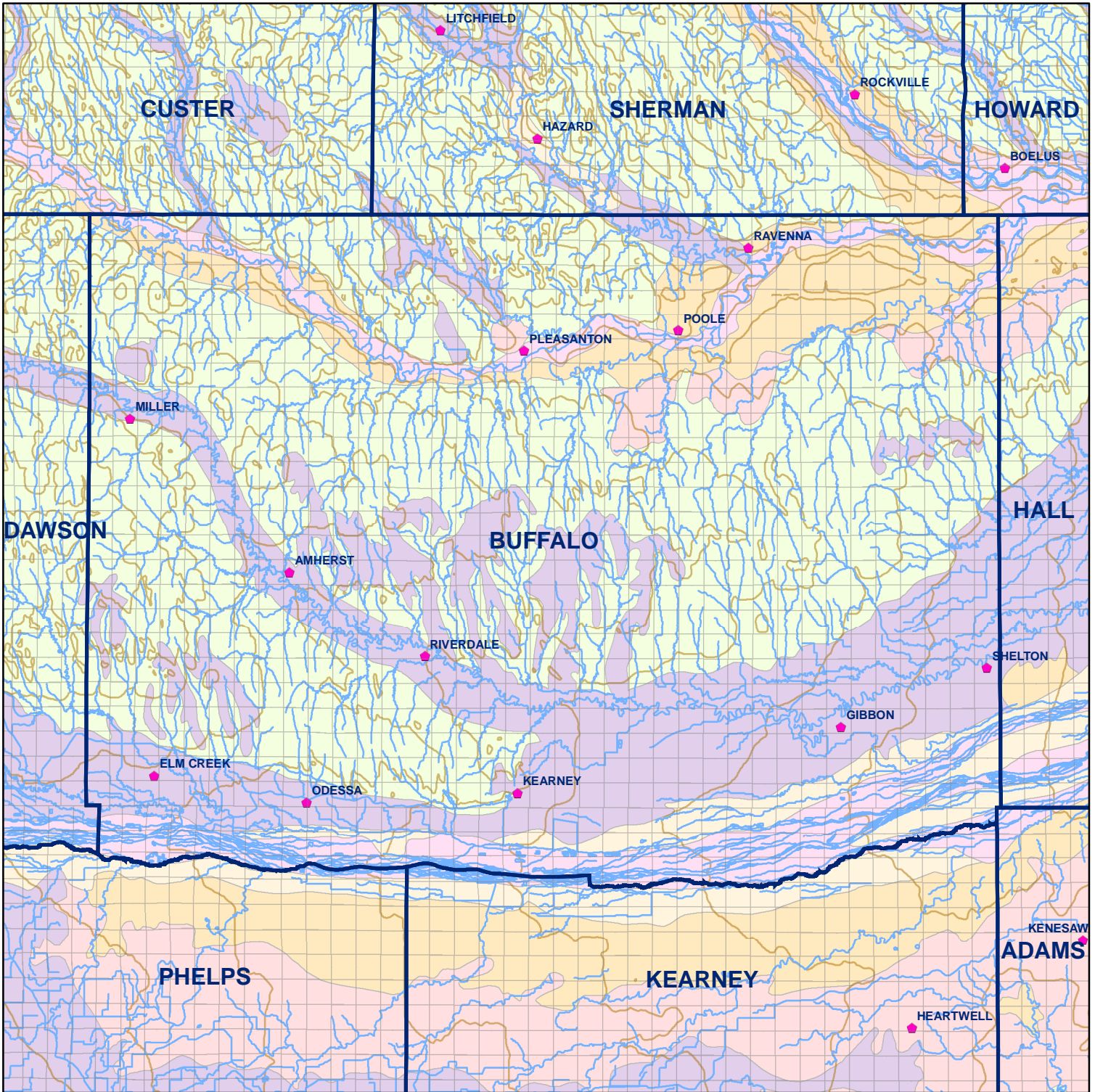


Market Areas



● Registered Wells > 500 GPM

2899	2901	2903	2905	2907	2909	2911	2913
3033	3031	3029	3027	3025	3023	3021	3019
3195	3197	3199	3201	3203	3205	3207	3209
3329	3327	3325	3323	3321	3319	3317	3315
3419	3421	3423	3425	3427	3429	3431	3433
3553	3551	3549	3547	3545	3543	3541	3539
3645	3647	3649	3651	3653	3655	3657	3659
3785	3783	3781	3779	3777	3775	3773	3771



Buffalo County

Legend

⌘ Towns

▭ Sections

— Rivers and Streams

— Topography

Soil Classes

— Lakes and Ponds

— Excessively drained sandy soils formed in alluvium in valleys and eolian sand on uplands in sandhills

— Excessively drained sandy soils formed in eolian sands on uplands in sandhills

— Moderately well drained silty soils on uplands and in depressions formed in loess

— Well drained silty soils formed in loess on uplands

— Well drained silty soils formed in loess and alluvium on stream terraces

— Well to somewhat excessively drained loamy soils formed in weathered sandstone and eolian material on uplands

— Somewhat poorly drained soils formed in alluvium on bottom lands

— Moderately well drained silty soils with clayey subsoils on uplands